

TABLES – GCSE, Project and Entry Level Trends, 2015

GCSE full course trends

Chart 1 Total entry for GCSE full course subjects

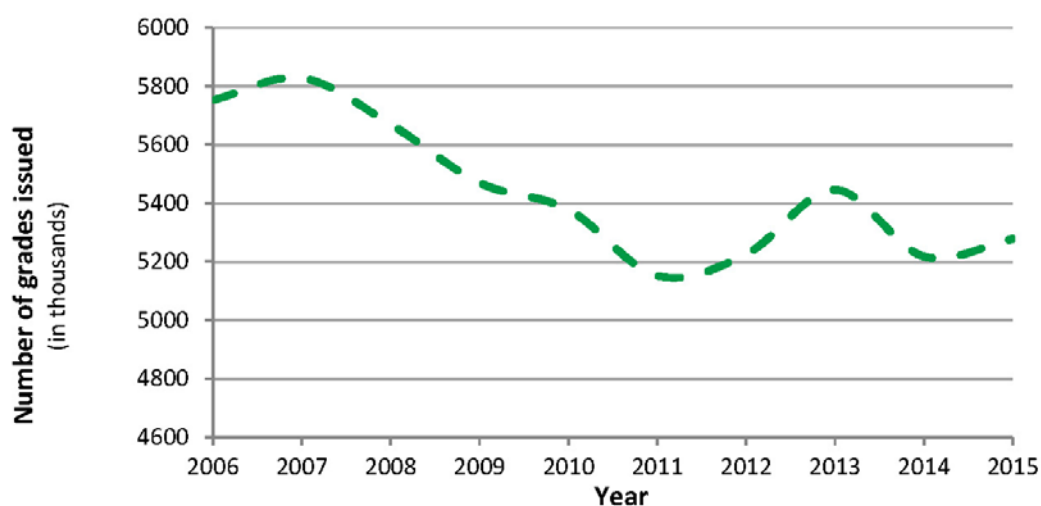


Chart 2 Cohort size

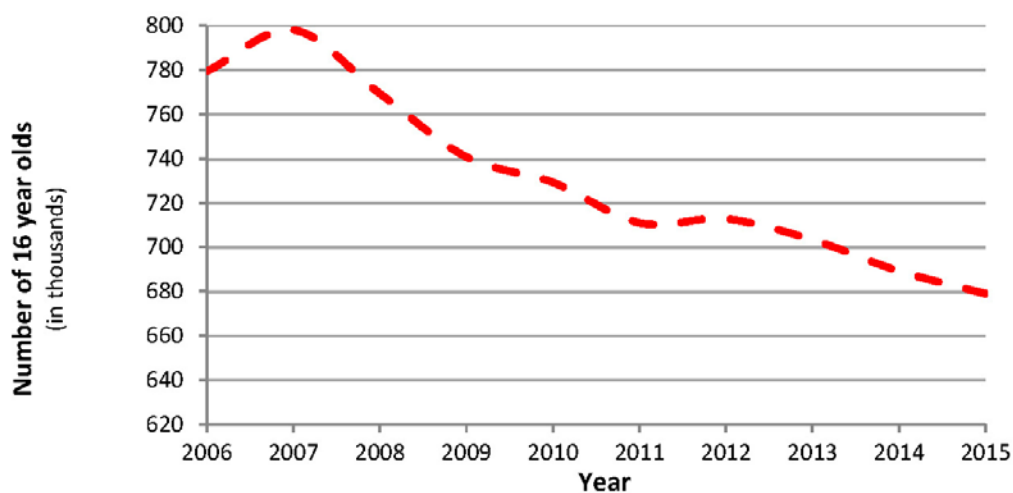


Table A Top ten GCSE full course subjects in 2015

Ranking	Subject	% of total	Number of candidates
1 (1)	Mathematics	14.42	761230
2 (2)	English	9.86	520524
3 (3)	English Literature	8.27	436546
4 (4)	Science	7.49	395484
5 (5)	Additional Science	6.31	332960
6 (6)	Religious Studies	5.60	295730
7 (7)	History	4.68	247040
8 (8)	Geography	4.32	228075
9 (9)	Design & Technology	3.88	204788
10 (10)	Art and Design subjects	3.69	194637

(2014 ranking in brackets.)

Chart 3 Top ten GCSE full course subjects as a percentage of the total entry over the period 2006 to 2015

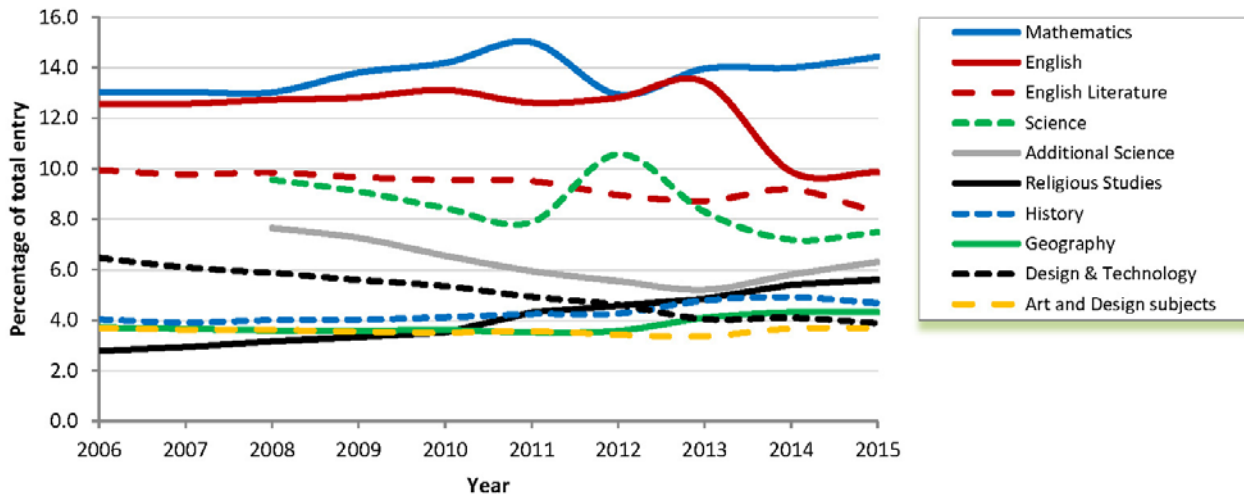


Table B Top GCSE full course subject increases (entry greater than 100,000)
(Changes from 2014-2015)

Ranking	Subject	% change	2014 Number of candidates	2015 Number of candidates
1 (1)	ICT	15.62	96811	111934
2 (2)	Additional Science	9.95	302825	332960
3 (3)	Physical Education	6.70	112971	120544
4	Science	5.47	374961	395484
5 (4)	Religious Studies	4.83	282099	295730
6	Mathematics	3.37	736403	761230
7 (5)	Art and Design subjects	1.69	191398	194637
8 (6)	Geography	1.30	225149	228075
9	English	0.96	515575	520524

(2014 ranking in brackets. Subjects having a year-on-year decrease in 2014 are shown as blank.)

Chart 4 Top GCSE full course subject increases, 2015 (entry greater than 100,000)

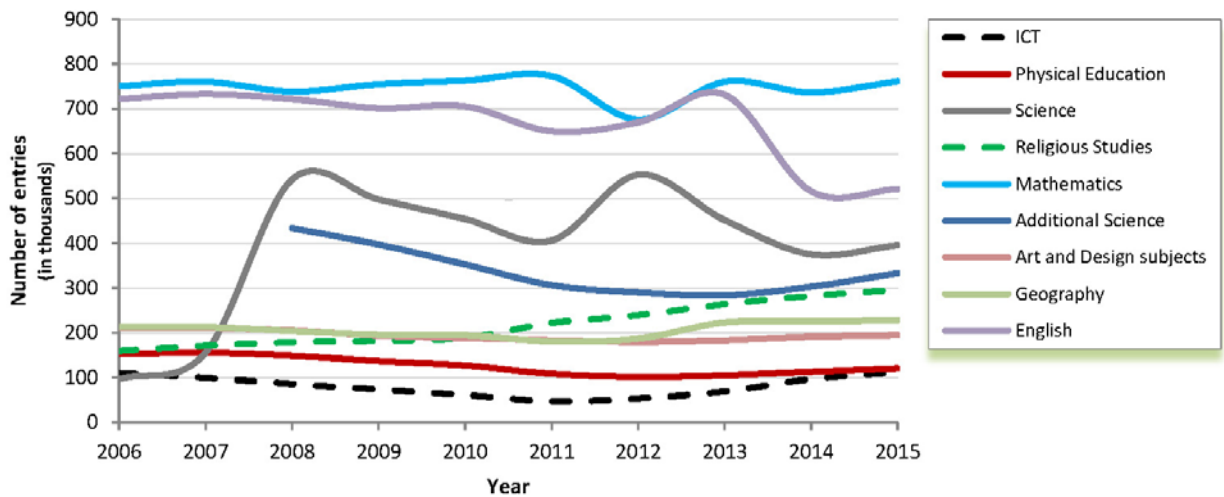


Table C Top GCSE full course subject increases (entry less than 100,000)
(Changes from 2014-2015)

Ranking	Subject	% change	2014 Number of candidates	2015 Number of candidates
1 (1)	Computing	111.14	16773	35414
2 (3)	Engineering	37.44	5027	6909
3 (5)	Health & Social Care	23.53	16085	19869
4	Additional Science (Further)	10.75	21119	23389
5 (4)	Citizenship Studies	9.85	19689	21628
6 (11)	Economics	7.02	5400	5779
7 (10)	Business Studies	6.14	90910	96493
8 (9)	All Other subjects	4.88	39086	40995
9 (12)	Social Science subjects	4.68	42637	44631
10 (17)	Welsh: Second Language	4.60	10566	11052

(2014 ranking in brackets. Subjects having a year-on-year decrease in 2014 are shown as blank. Additional Science (Further) was introduced in 2014.)

Chart 5 Top GCSE full course subject increases, 2015 (entry less than 100,000)

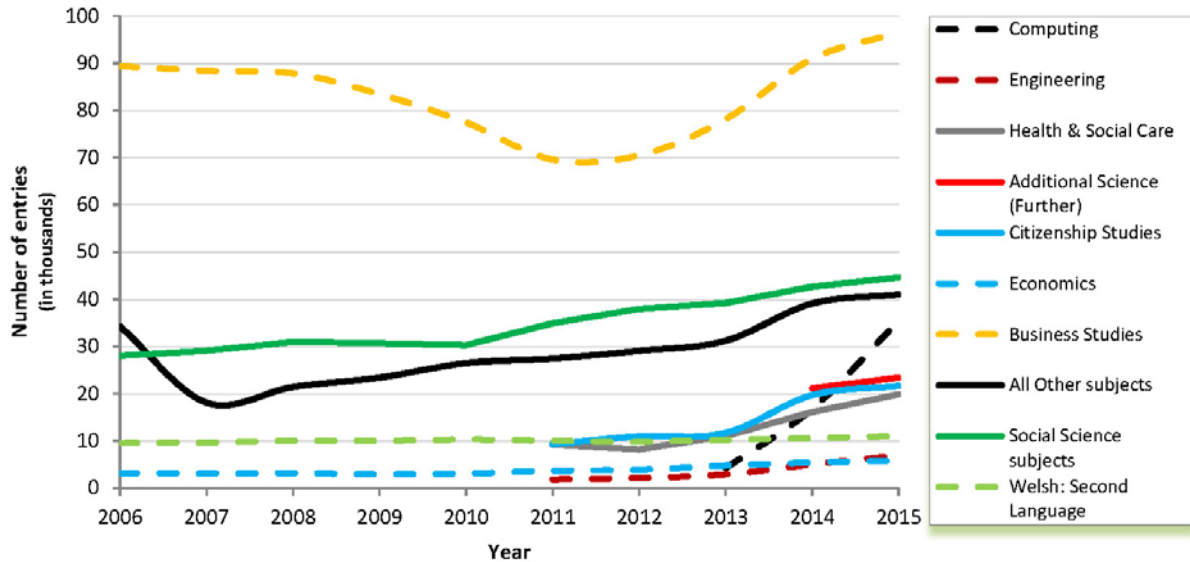


Table D GCSE full course subject decreases (entry greater than 100,000)
(Changes from 2014-2015)

Ranking	Subject	% change	2014 Number of candidates	2015 Number of candidates
1	English Literature	-8.78	478575	436546
2 (6)	French	-6.16	168042	157699
3 (8)	Design & Technology	-4.14	213629	204788
4 (9)	History	-3.57	256179	247040
5 (4)	Chemistry	-3.34	138238	133618
6 (5)	Physics	-2.64	137227	133610
7 (2)	Biology	-1.90	141900	139199

(2014 ranking in brackets. Subjects having a year-on-year increase in 2014 are shown as blank.)

Chart 6 Top GCSE full course subject decreases, 2015 (entry more than 100,000)

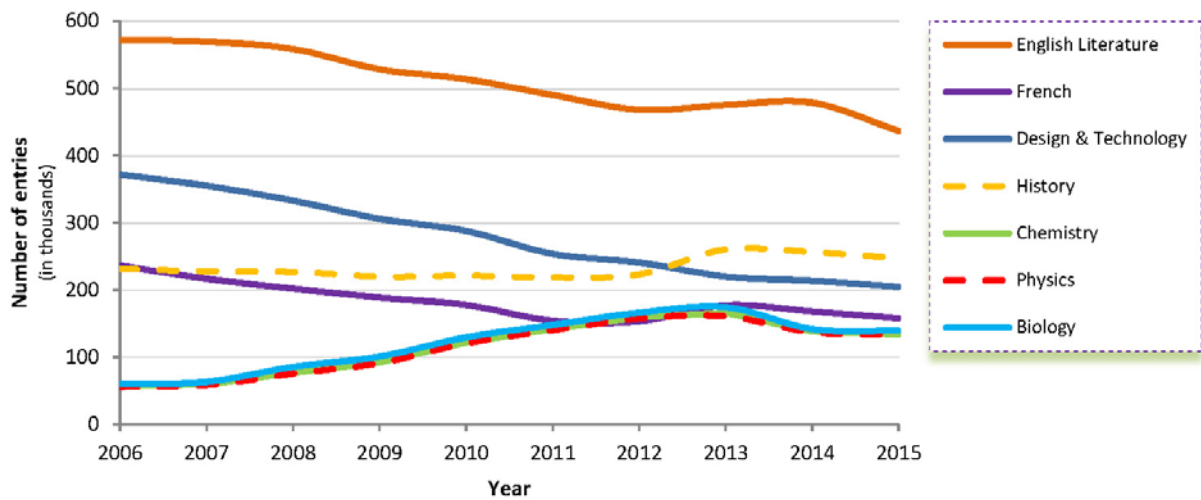


Table E GCSE full course subject decreases (entry less than 100,000)
(Changes from 2014-2015)

Ranking	Subject	% change	2014 Number of candidates	2015 Number of candidates
1	Humanities	-21.97	9707	7574
2	Manufacturing	-15.91	308	259
3	Other Sciences	-13.34	10417	9027
4 (4)	German	-9.77	59891	54037
5 (1)	Other Technology	-8.68	1118	1021
6	Statistics	-8.58	61642	56355
7	Leisure & Tourism	-8.47	7265	6650
8	Preparation for Working Life	-8.43	8175	7486
9 (2)	Construction	-6.69	583	544
10	Home Economics	-5.12	36242	34387

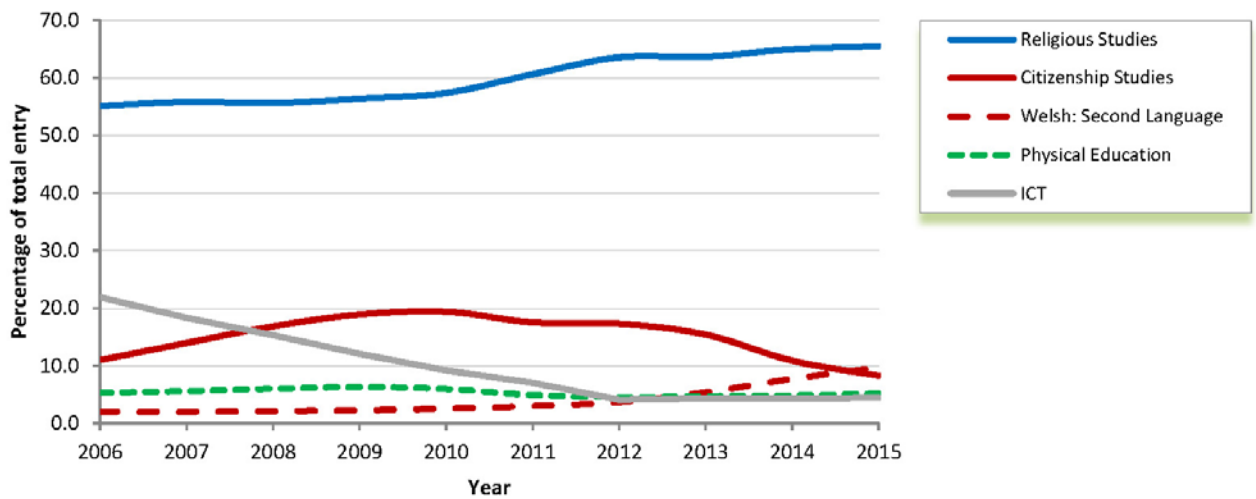
(2014 ranking in brackets. Subjects having a year-on-year increase in 2014 are shown as blank.)

GCSE short course trends

Table F Top GCSE short course subjects in 2015

Ranking	Subject	% of total	Number of candidates
1 (1)	Religious Studies	65.47	91476
2 (3)	Welsh: Second Language	9.71	13562
3 (2)	Citizenship Studies	8.28	11564
4 (4)	Physical Education	5.16	7206
5 (5)	ICT	4.45	6221

Chart 7 Top five GCSE short course subjects as a percentage of the total entry over the period 2006 to 2015



GCSE double award trends

Table G Top GCSE double award subjects in 2015

Ranking	Subject	% of total	Number of candidates
1 (1)	Science: Double Award	41.78	7215
2 (2)	Health & Social Care	12.69	2192
3 (3)	Business	11.12	1920
4 (6)	Engineering	8.80	1520
5 (5)	ICT	7.99	1379

(2014 ranking in brackets.)

Entry Level trends

Table H Top Entry Level subjects in 2015

Ranking	Subject	% of total	Number of candidates
1 (1)	Mathematics	19.74	11207
2 (3)	Science	14.08	7992
3 (2)	English	13.57	7705
4 (5)	ICT	13.46	7641
5 (4)	Physical Education	8.32	4725

(2014 ranking in brackets.)

Project Trends

Table I Changes from 2014-2015

Subject	% change	2014 Number of candidates	2015 Number of candidates
Level 1 Project	-59.1	2382	975
Level 2 Project	-42.6	9810	5631