

GCE A-level trends

Figure 1 Traditional vs. Newer subjects – A-level (2002 - 2013)

Traditional subjects are:

Art & Design
Classical Subjects
Economics
English
Geography
History
Mathematics
Mathematics (Further)
Religious Studies

Newer subjects are:

Law
Media/Film/TV Studies
Political Studies
Psychology
Sociology

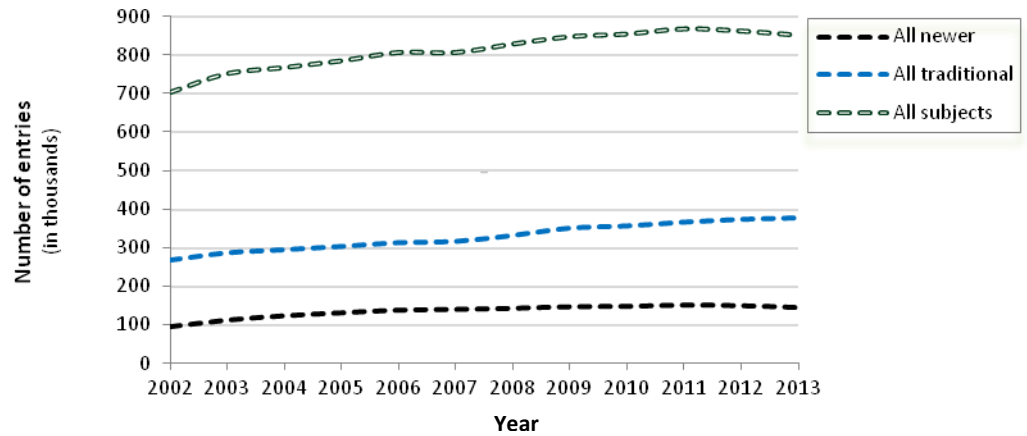
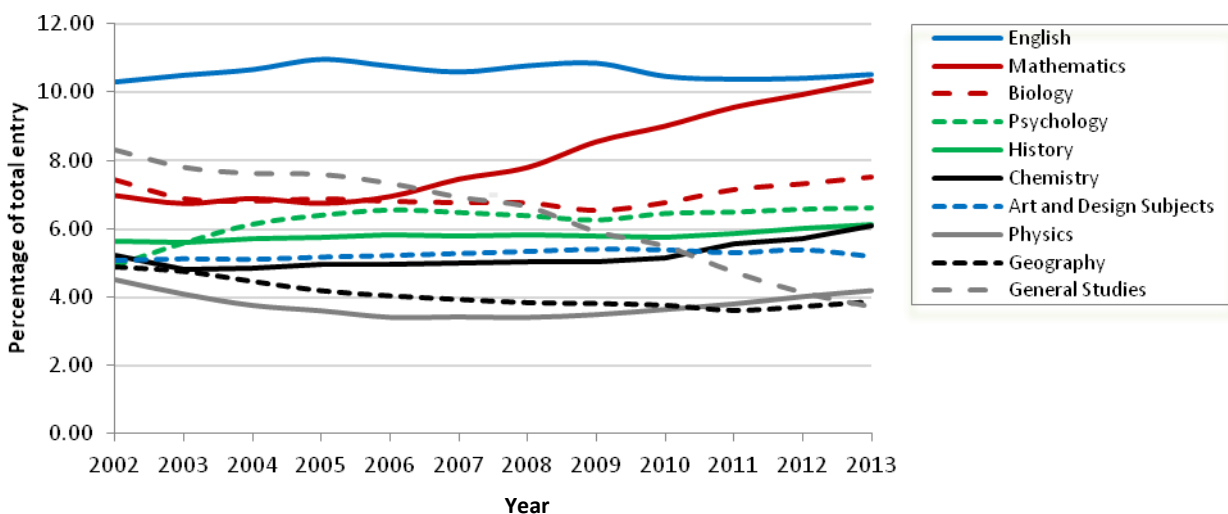


Table 1 Top GCE A-level subjects in 2013

Ranking	Subject	% of total	Number of candidates
1 (1)	English	10.51	89442
2 (2)	Mathematics	10.35	88060
3 (3)	Biology	7.52	63939
4 (4)	Psychology	6.59	56088
5 (5)	History	6.13	52149
6 (6)	Chemistry	6.09	51818
7 (7)	Art and Design Subjects	5.18	44069
8 (9)	Physics	4.18	35569
9 (11)	Geography	3.86	32872
10 (8)	General Studies	3.71	31562

(2012 ranking in brackets)

Figure 2 Top ten A-level subjects as a percentage of the total entry over the period 2002 to 2013



The top four subjects have maintained their rankings for the last five years. Physics, at 8th, assumes its highest ranking over the period 2002-2013. Geography, having occupied 11th position for the last two years, has re-entered the top ten.

Apart from Physics and Geography, all other subjects have assumed top ten rankings over the period 2002-2013. General Studies and Media/Film/TV Studies have decreased the most (two positions) compared to all subjects, the latter having moved out of the top 10 this year.

Table 2 Top GCE A-level subject increases (Changes from 2012-2013)

Ranking	Subject	% change	2012 Number of candidates	2013 Number of candidates
1 (13)	Economics	7.45	24327	26139
2 (10)	Chemistry	5.25	49234	51818
3 (1)	Mathematics (Further)	4.52	13223	13821
4	Spanish	4.08	7351	7651
5 (3)	Physics	3.07	34509	35569
6 (7)	Other Sciences	3.02	3375	3477
7 (5)	Mathematics	2.74	85714	88060
8 (9)	Geography	2.71	32005	32872
9 (14)	Biology	1.37	63074	63939
10 (6)	Religious Studies	1.35	23042	23354

(2012 ranking in brackets. Subjects having a year-on-year decrease in 2012 are shown as blank.)

Figure 3 Top GCE A-level subject increases, 2013

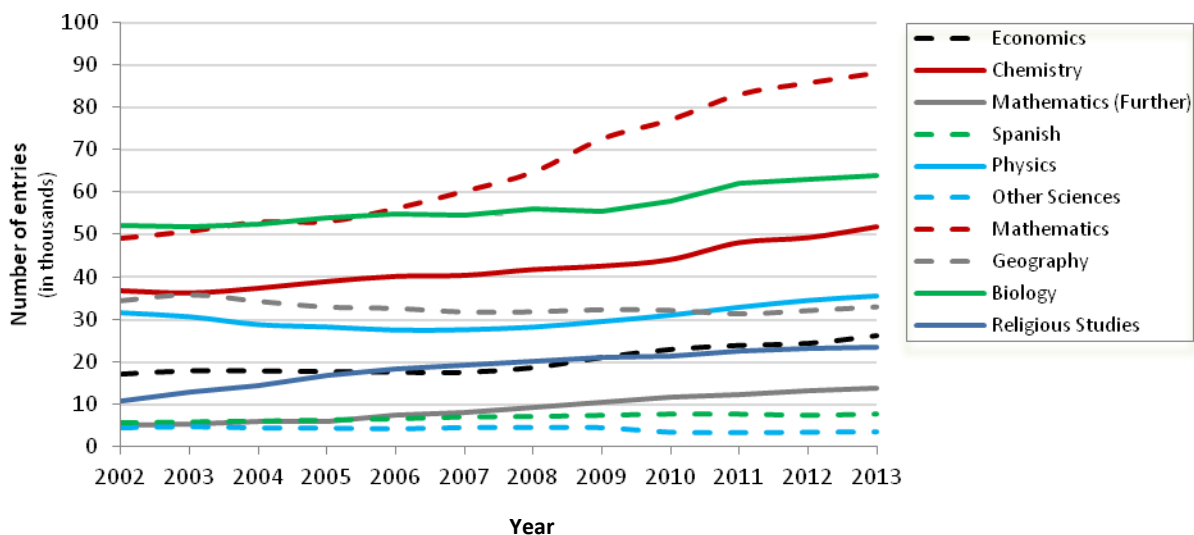


Table 3 GCE A-level subject decreases (Changes from 2012-2013)

Ranking	Subject	% change	2012 Number of candidates	2013 Number of candidates
1	Communication Studies	-16.57	2118	1767
2 (3)	Physical Education	-14.53	16896	14441
3 (4)	Performing / Expressive Arts	-11.74	3152	2782
4 (1)	Critical Thinking	-11.37	1117	990
5 (2)	General Studies	-11.24	35558	31562
6 (6)	German	-11.13	4773	4242
7 (11)	French	-9.90	12511	11272
8 (12)	Media / Film / TV Studies	-9.34	32111	29112
9 (8)	Design and Technology	-8.56	17105	15641
10 (9)	Drama	-8.42	15139	13864

(2012 ranking in brackets. Subjects having a year-on-year increase in 2012 are shown as blank.)

Figure 4 Top GCE A-level subject decreases, 2013

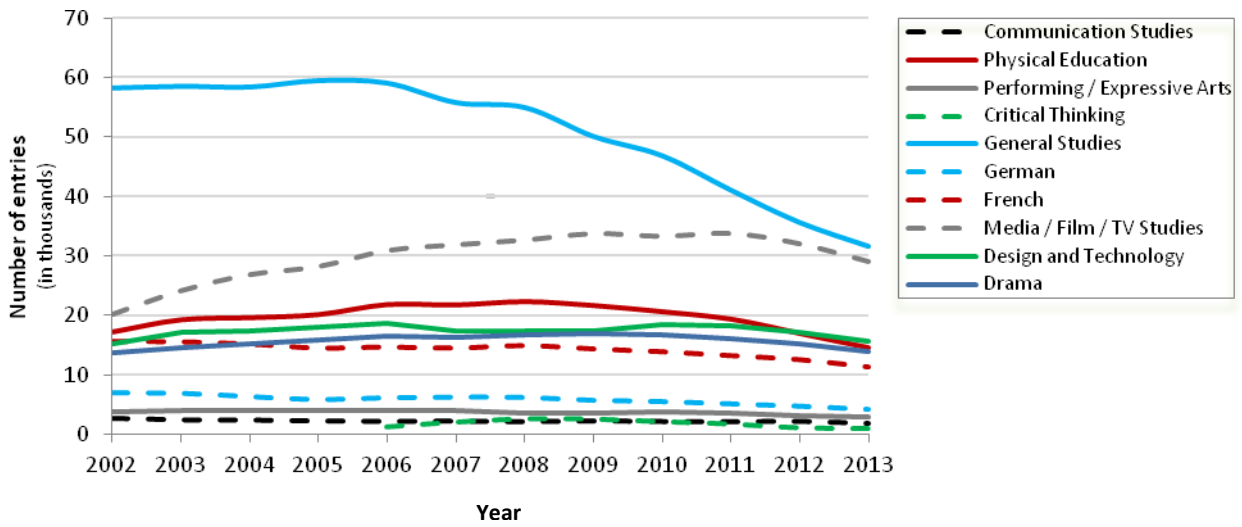


Figure 5 GCE A-level Sciences, 2013

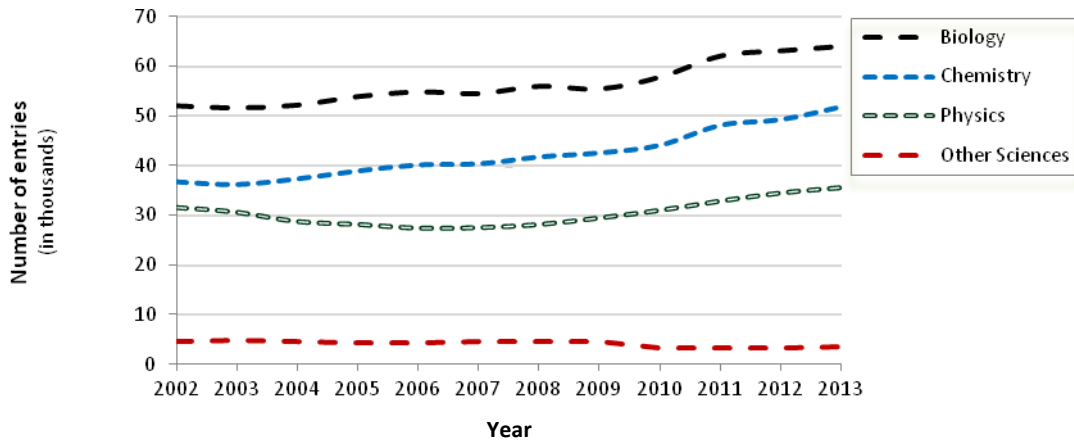
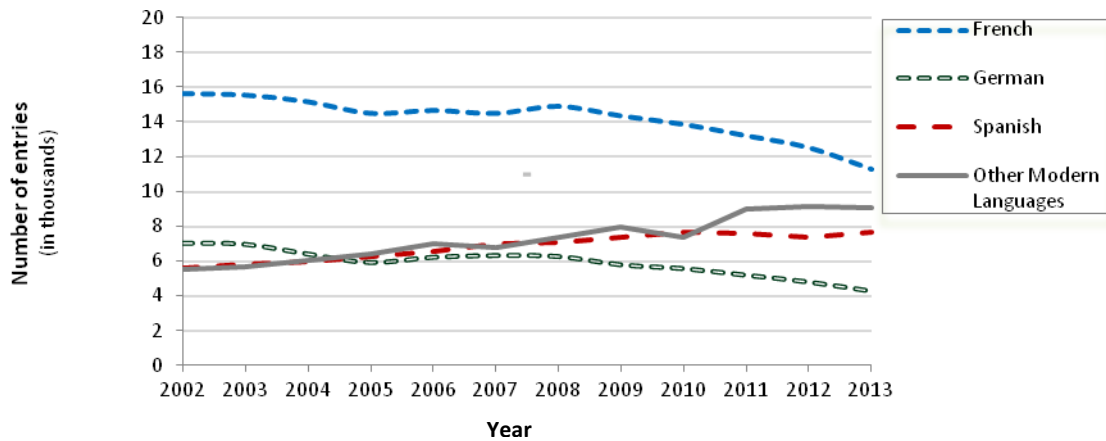


Figure 6 GCE A-level Languages, 2013



GCE AS trends

Figure 1 Traditional vs. Newer subjects – AS (2002 - 2013)

Traditional subjects are:

- Art & Design
- Classical Subjects
- Economics
- English
- Geography
- History
- Mathematics
- Mathematics (Further)
- Religious Studies

Newer subjects are:

- Law
- Media/Film/TV Studies
- Political Studies
- Psychology
- Sociology

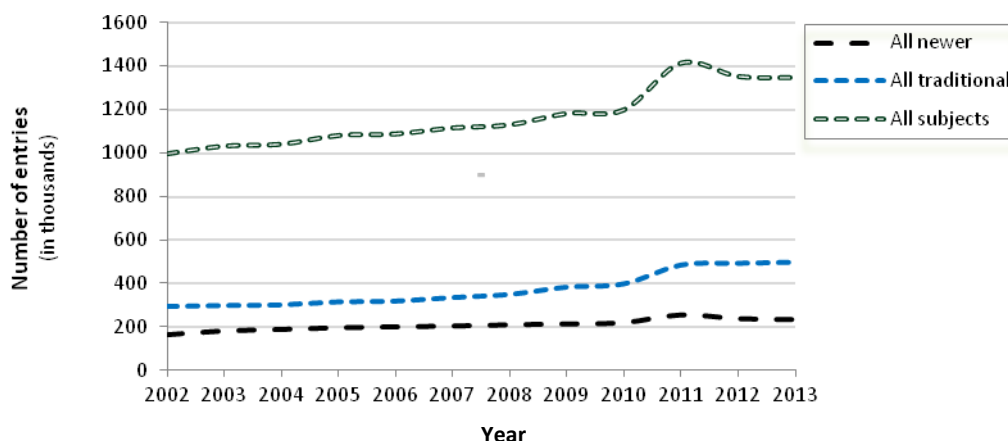
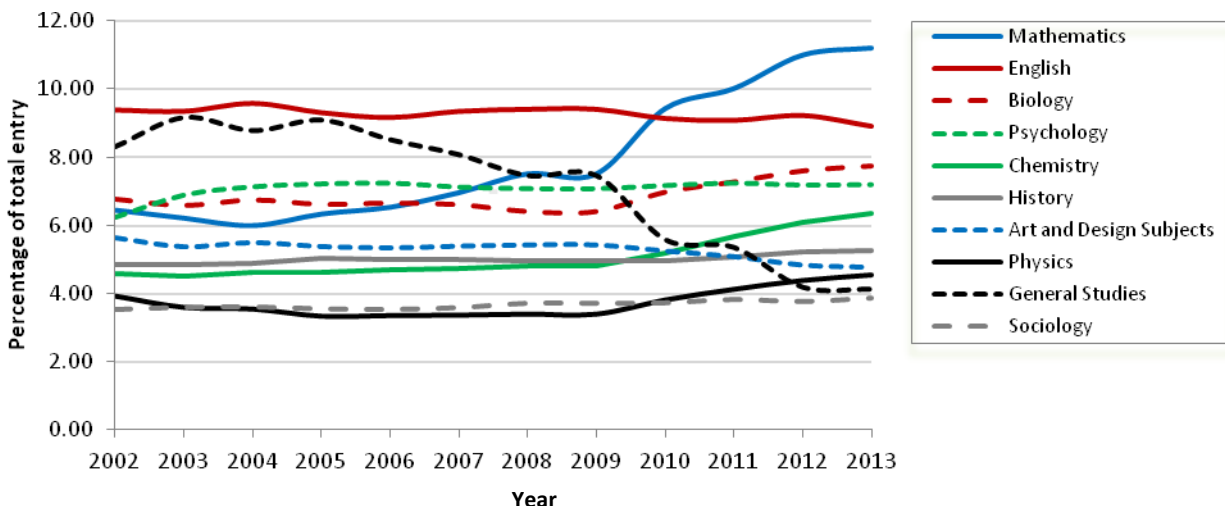


Table 4 Top GCE AS subjects in 2013

Ranking	Subject	% of total	Number of candidates
1	(1) Mathematics	11.21	150787
2	(2) English	8.90	119736
3	(3) Biology	7.72	103905
4	(4) Psychology	7.20	96908
5	(5) Chemistry	6.36	85631
6	(6) History	5.27	70910
7	(7) Art and Design Subjects	4.78	64313
8	(8) Physics	4.55	61176
9	(9) General Studies	4.13	55573
10	(10) Sociology	3.86	51981

(2012 ranking in brackets)

Figure 7 Top ten AS subjects as a percentage of the total entry over the period 2002 to 2013



All ten subjects occupy the same position as last year and have remained in the top ten for the second consecutive year. This is the fourth consecutive year in which all sciences: Biology, Chemistry and Physics appear in the top ten.

Table 5 GCE AS subject increases (Changes from 2012-2013)

Ranking	Subject	% change	2012 Number of candidates	2013 Number of candidates
1	Computing	15.12	7719	8886
2 (1)	Mathematics (Further)	7.86	20954	22601
3 (2)	Economics	5.01	38386	40311
4 (4)	Chemistry	3.93	82390	85631
5 (7)	Geography	3.62	45923	47586
6 (6)	Physics	3.39	59172	61176
7 (8)	Classical Subjects	3.26	8614	8895
8	Religious Studies	3.05	33654	34679
9 (5)	Spanish	3.01	11781	12136
10	Other Modern Languages	2.77	9591	9857

(2012 ranking in brackets. Subjects having a year-on-year decrease in 2012 are shown as blank.)

Figure 8 GCE AS subject increases, 2013

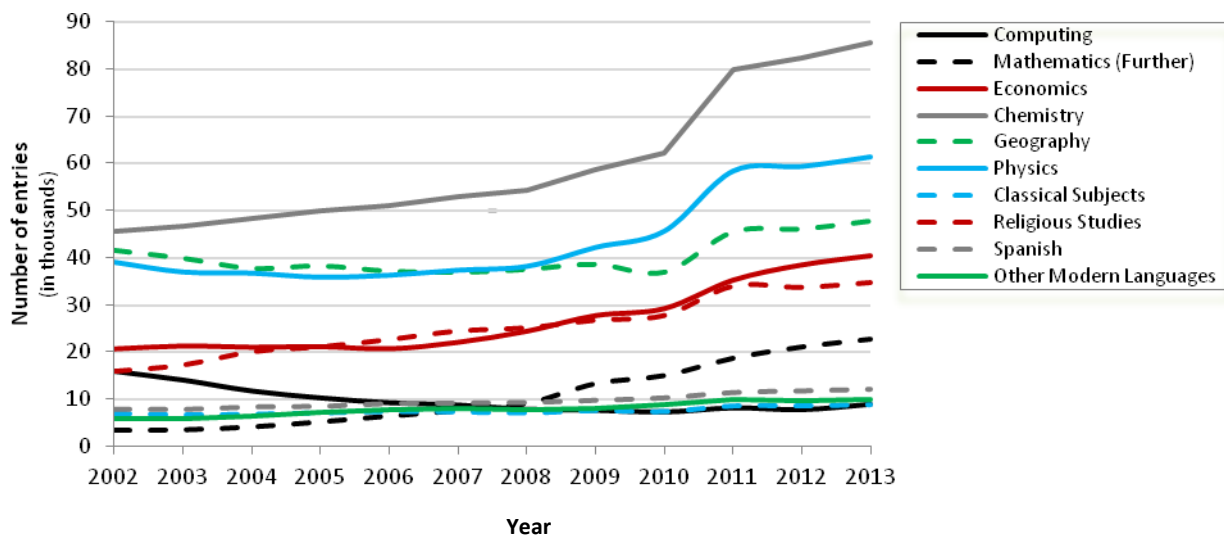


Table 6 GCE AS subject decreases (Changes from 2012-2013)

Ranking	Subject	% change	2012 Number of candidates	2013 Number of candidates
1 (1)	Critical Thinking	-25.67	13820	10273
2 (4)	Performing / Expressive Arts	-12.24	4648	4079
3 (14)	Law	-8.14	22501	20669
4 (9)	ICT	-8.12	18961	17421
5 (3)	Physical Education	-7.77	23423	21603
6 (25)	Political Studies	-6.62	21601	20170
7 (12)	French	-6.52	18721	17501
8 (7)	Drama	-5.59	18691	17646
9 (10)	Music	-4.99	13740	13055
10 (5)	Media / Film / TV Studies	-4.53	45375	43319

(2012 ranking in brackets. Subjects having a year-on-year increase in 2012 are shown as blank.)

Figure 9 GCE AS subject decreases, 2013

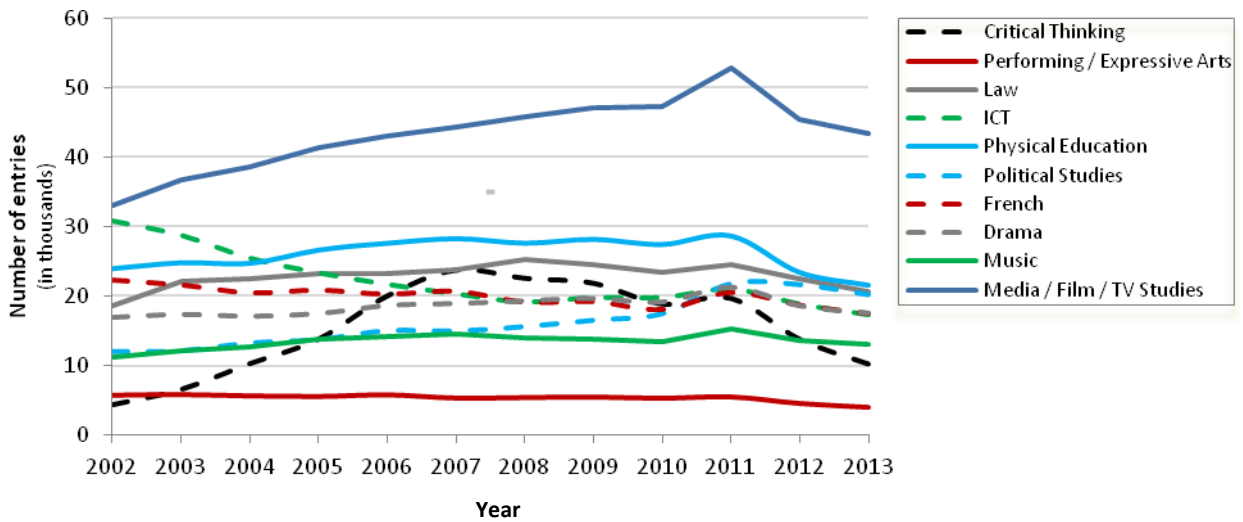


Figure 10 GCE AS Sciences, 2013

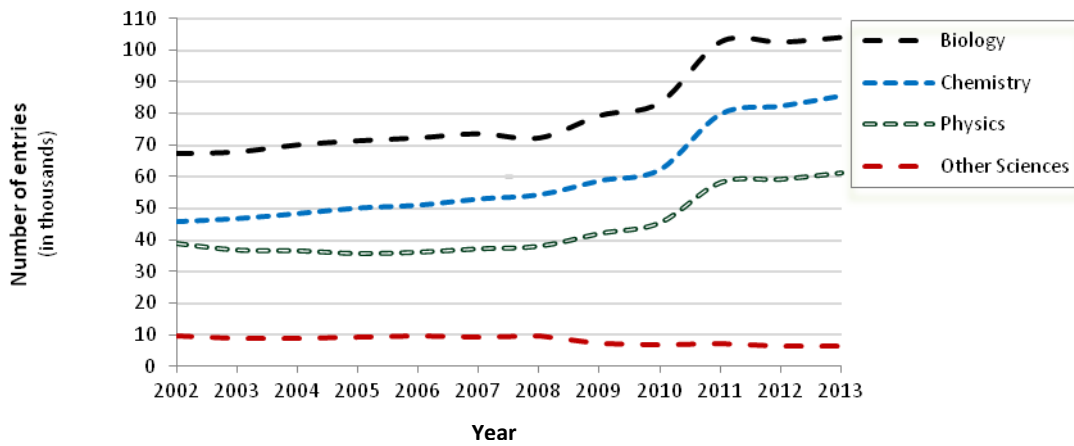
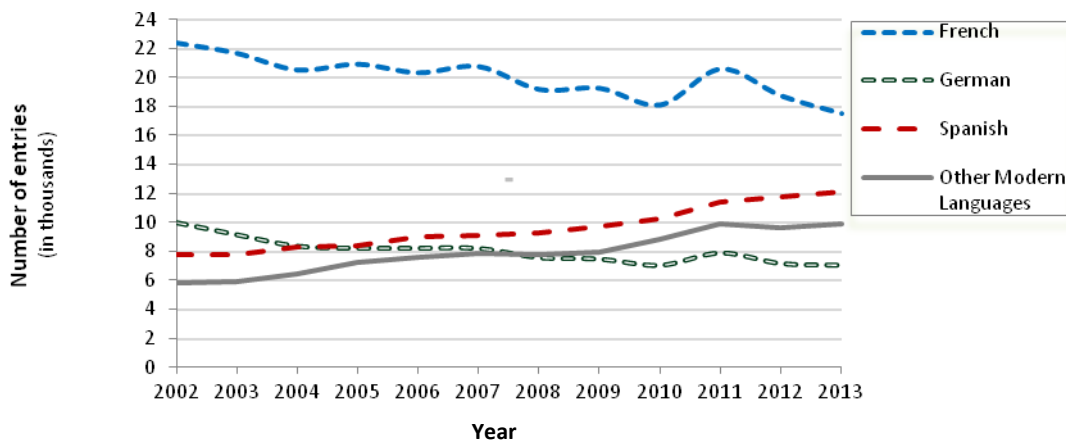


Figure 11 GCE AS Languages, 2013



Applied GCE trends

Table 7 All Applied GCE A-level double award subjects, 2013

Ranking	Subject	% of total	Number of candidates
1 (1)	Health & Social Care	48.92	2622
2 (2)	Business	22.89	1227
3 (3)	Science	10.11	542
4 (4)	ICT	8.81	472
5 (5)	Art & Design	7.35	394
6 (6)	Travel & Tourism	1.92	103
7 (7)	Leisure	0.00	0

(2012 ranking in brackets)

Table 8 All Applied GCE A-level single award subjects, 2013

Ranking	Subject	% of total	Number of candidates
1 (1)	ICT	28.16	8753
2 (2)	Health & Social Care	24.43	7593
3 (3)	Business	22.66	7043
4 (4)	Science	9.62	2991
5 (5)	Travel & Tourism	6.03	1873
6 (6)	Performing Arts	3.85	1196
7 (7)	Leisure	1.83	568
8 (8)	Art & Design	1.29	400
9 (9)	Media: Communication and Production	1.26	393
10 (10)	Engineering	0.87	271

Table 9 All Applied GCE AS double award subjects, 2013

Ranking	Subject	% of total	Number of candidates
1 (1)	Health & Social Care	47.44	2608
2 (2)	Business	23.85	1311
3 (3)	Science	11.44	629
4 (4)	ICT	9.17	504
5 (5)	Art & Design	6.29	346
6 (6)	Travel & Tourism	1.82	100
7 (7)	Leisure	0.00	0

(2012 ranking in brackets)

Table 10 All Applied GCE AS single award subjects, 2013

Ranking	Subject	% of total	Number of candidates
1 (1)	ICT	27.10	12128
2 (3)	Business	23.63	10576
3 (2)	Health & Social Care	20.73	9277
4 (4)	Science	12.96	5800
5 (5)	Travel & Tourism	6.60	2956
6 (6)	Performing Arts	3.90	1747
7 (7)	Leisure	1.81	811
8 (10)	Engineering	1.22	546
9 (9)	Media: Communication and Production	1.19	531
10 (8)	Art & Design	0.86	385

(2012 ranking in brackets)

The overall entries for the Applied GCE single and double Award A-levels subjects all show a decrease from 2012.

Level 3 Extended Project trend

Table 11 Changes from 2012-2013

Subject	% change	2012 Number of candidates	2013 Number of candidates
Level 3 Extended Project	6.40	28572	30401

AEA trend

Table 12 Changes from 2012-2013

Subject	% change	2012 Number of candidates	2013 Number of candidates
Mathematics	-1.17	767	758

Note: It is intended that the AEA in Mathematics will continue until a new A-level specification in Mathematics is introduced.