

GCE A-level trends

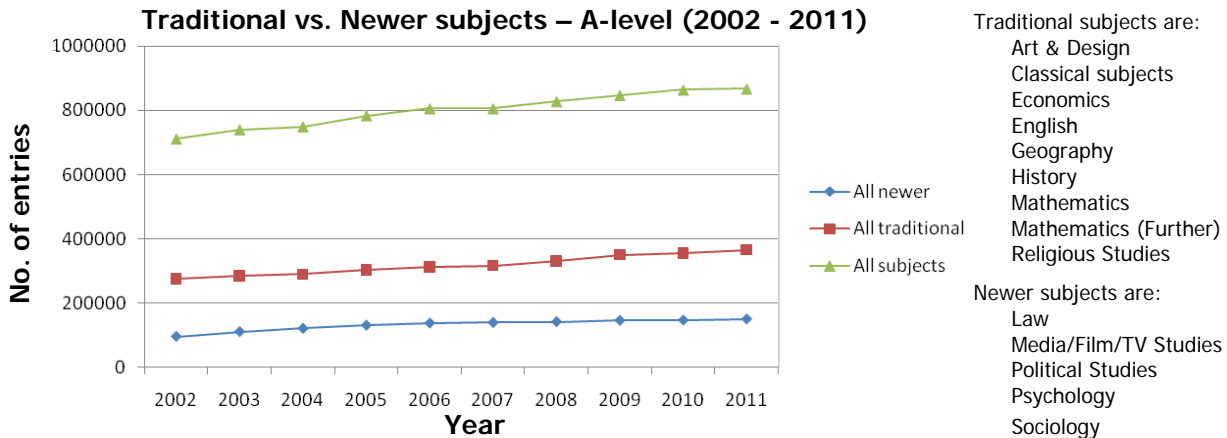
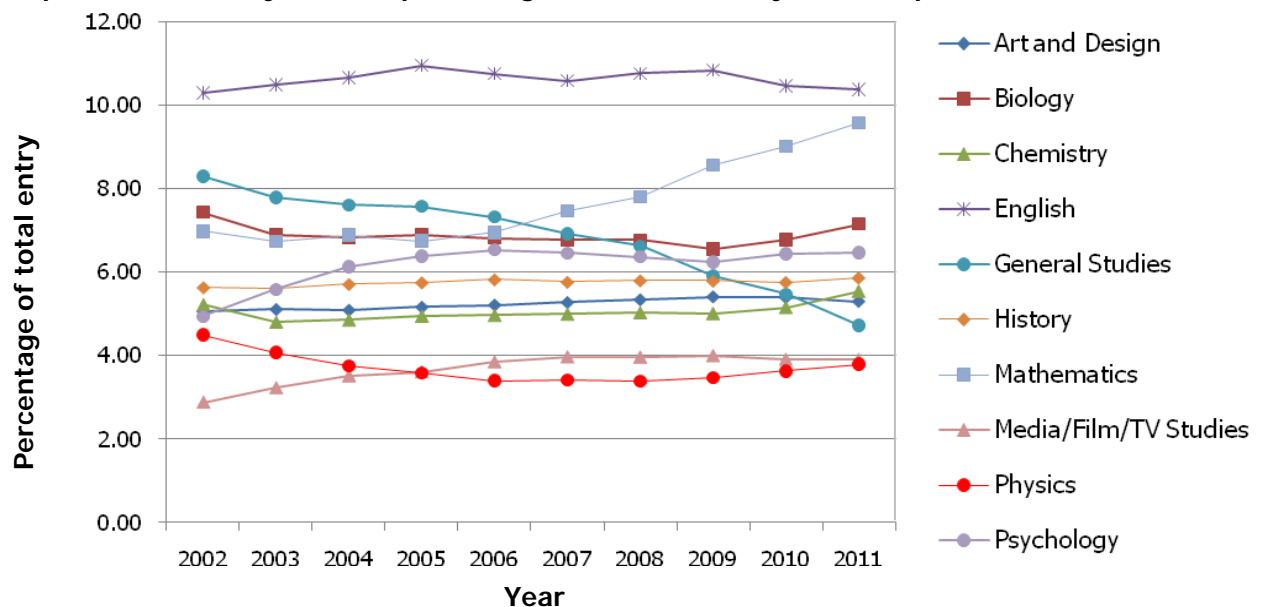


Table 1 Top GCE A-level subjects in 2011

Subject (2010 ranking in brackets)		2011		
		% of total	Number of candidates	
1	(1)	English	10.38	89980
2	(2)	Mathematics	9.57	82995
3	(3)	Biology	7.15	62041
4	(4)	Psychology	6.47	56133
5	(5)	History	5.87	50897
6	(8)	Chemistry	5.54	48082
7	(7)	Art and Design Subjects	5.30	45959
8	(6)	General Studies	4.73	40984
9	(9)	Media / Film / TV Studies	3.90	33855
10	(12)	Physics	3.79	32860

Top ten A-level subjects as a percentage of the total entry over the period 2002 to 2011



The top eight subjects have been the top eight over the whole of the period. Media/Film/TV Studies and Physics are the two subjects which have not consistently been in the top ten. Media/Film/TV Studies appeared for the first time in 2006 at 10th place and is now in 9th place. Physics was at 10th place in 2002 and is again in 2011. Geography was at 9th place until 2006 then slipped to 10th place until 2010 and has now dropped down to 11th place. Business Studies made an appearance at 10th place from 2003 to 2005.

Table 2 Top GCE A-level subject increases

Subject (2010 ranking in brackets)		Changes from 2010-2011		
		% change	2010 Number of candidates	2011 Number of candidates
1	Other Modern Languages	21.48	7370	8953
2 (9)	Chemistry	9.15	44051	48082
3 (11)	Political Studies	8.03	13744	14848
4 (3)	Mathematics	7.78	77001	82995
5 (6)	Biology	7.24	57854	62041
6 (5)	Physics	6.08	30976	32860
7 (1)	Mathematics (Further)	5.18	11682	12287
8 (14)	Religious Studies	5.14	21233	22325
9 (2)	Economics	4.23	22875	23843
10 (13)	Sociology	3.54	29665	30714

N.B. Other Modern Languages had the fourth largest decrease in 2010.

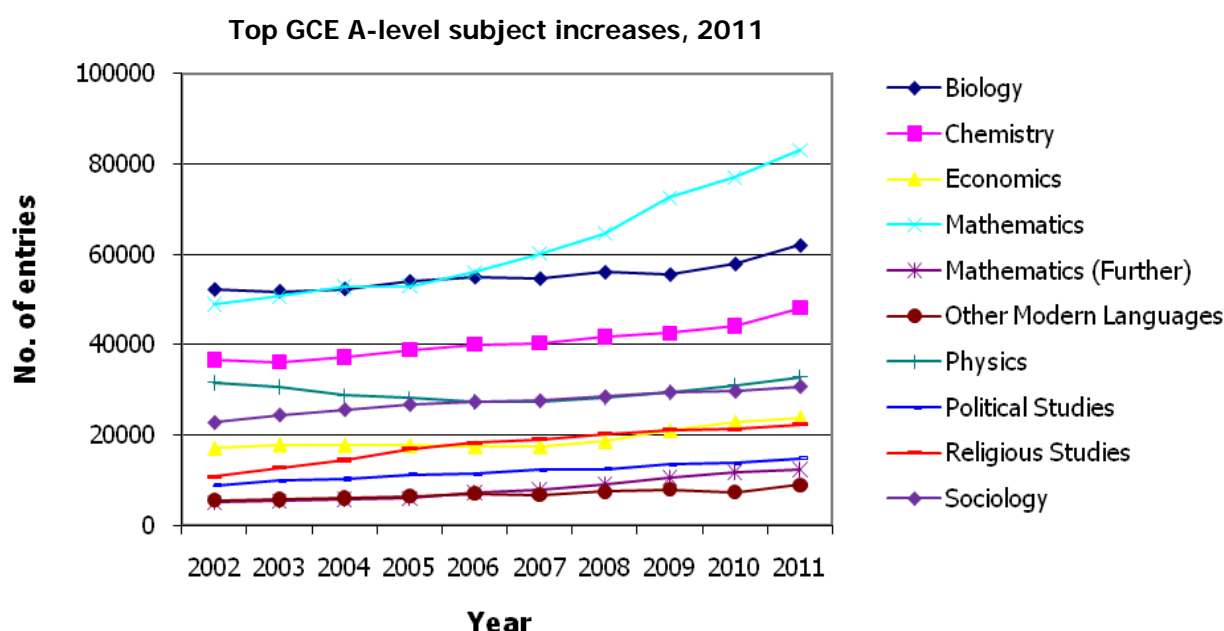
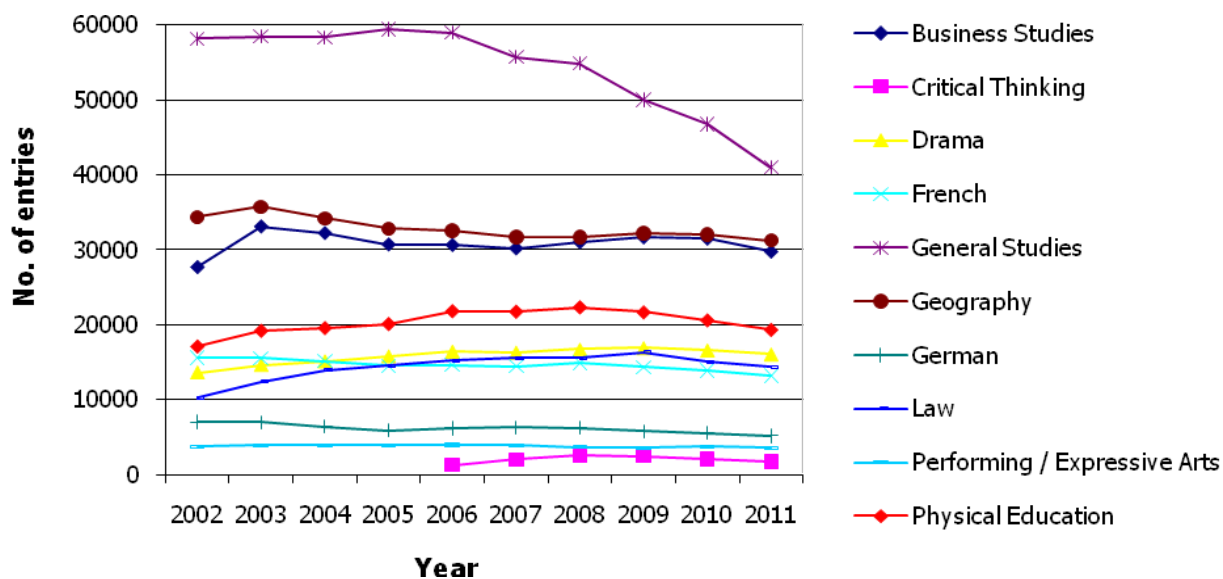


Table 3 GCE A-level subject decreases

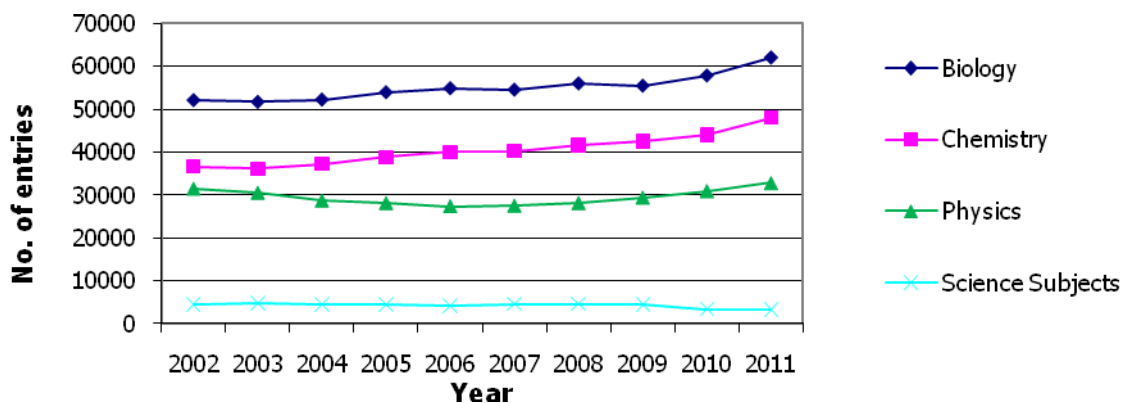
Subject (2010 ranking in brackets)		Changes from 2010-2011		
		% Change	2010 Number of candidates	2011 Number of candidates
1 (1)	Critical Thinking	-17.34	2082	1721
2 (5)	General Studies	-12.37	46770	40984
3 (9)	German	-6.89	5548	5166
4 (6)	Physical Education	-6.15	20612	19344
5 (23)	Business Studies	-5.57	31503	29748
6 (10)	French	-4.72	13850	13196
7 (3)	Law	-4.32	15029	14379
8	Performing / Expressive Arts	-3.59	3708	3575
9 (13)	Drama	-3.25	16598	16059
10 (16)	Geography	-2.61	32063	31226

N.B. Performing / Expressive Arts had the tenth largest increase in 2010.

Top GCE A-level subject decreases, 2011

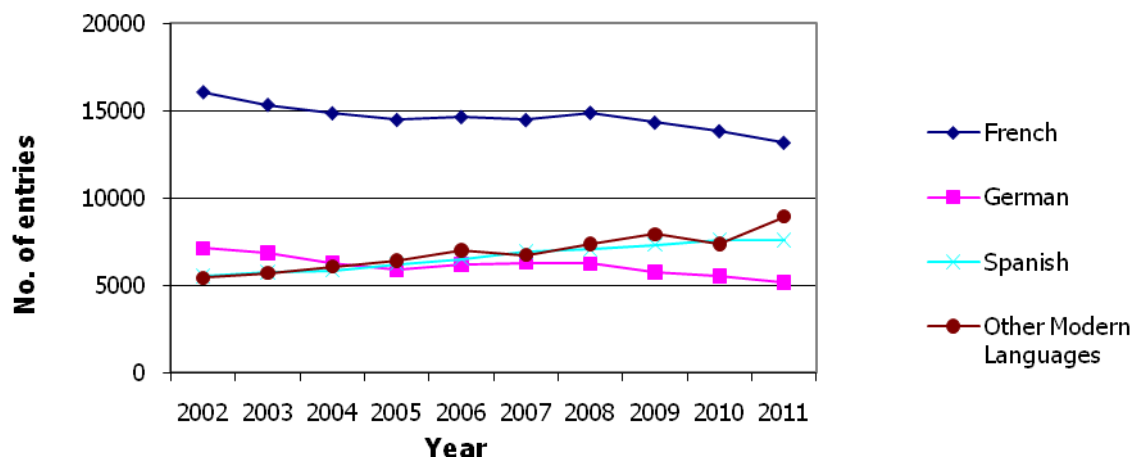


GCE A-level Sciences, 2011



Note: In 2010, the specification entitled Environmental Science ceased to exist. The new specification is Environmental Studies and as such is reported under 'All Other Subjects'. The removal of this specification accounts for the decrease in entry for 'Science Subjects' in 2010.

GCE A-level Languages, 2011



GCE AS trends

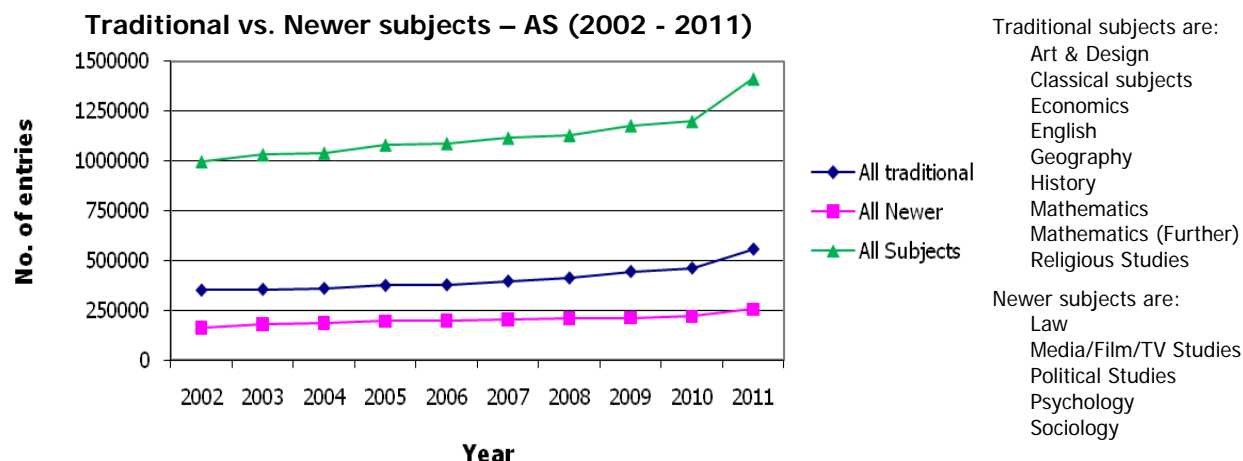
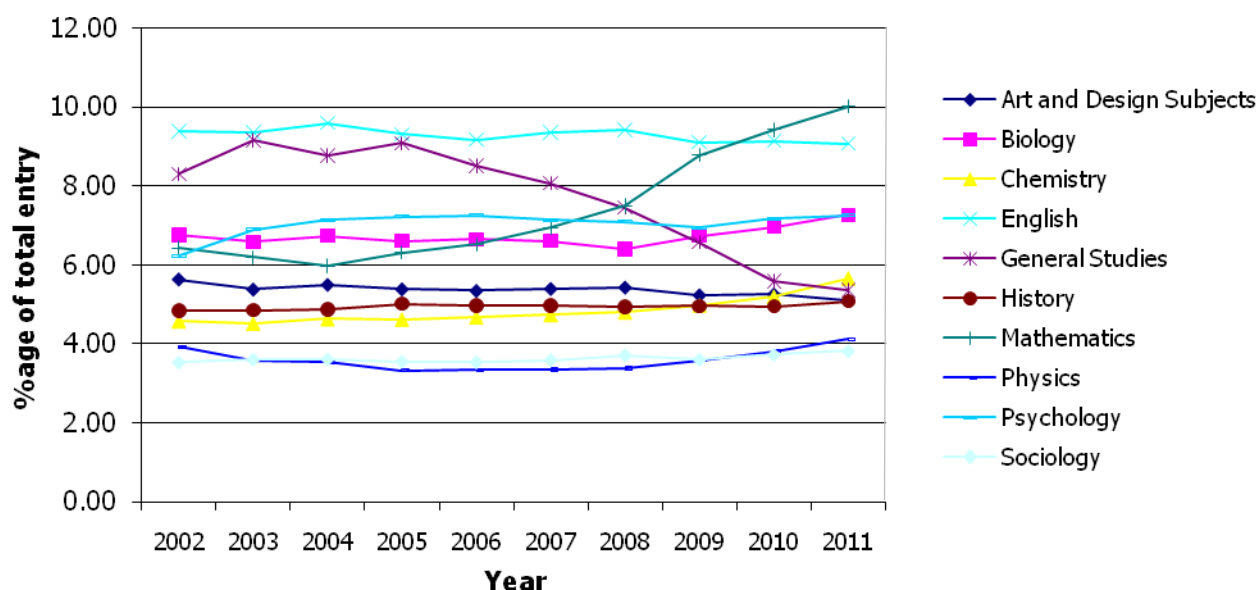


Table 4 Top GCE AS subjects in 2011

Subject (2010 ranking in brackets)		2011	
		% of total	Number of candidates
1	(1) Mathematics	10.01	141392
2	(2) English	9.08	128158
3	(4) Biology	7.26	102532
4	(3) Psychology	7.25	102334
5	(7) Chemistry	5.66	79874
6	(5) General Studies	5.36	75609
7	(6) Art and Design Subjects	5.09	71871
8	(8) History	5.08	71678
9	(10) Physics	4.12	58190
10	(11) Sociology	3.82	53967

Top ten AS subjects as a percentage of the total entry over the period 2002 to 2011



The top eight subjects have been the top eight over the whole of the period. Business Studies was in 9th place in 2002, dropped to 10th in 2005 and then 12th place in 2010 and 2011. Geography featured at 10th place in the first two years. It has now dropped to 14th place. Media/Film/TV Studies came in at 10th place in 2004 and then held 9th place until 2010. It is now at 11th place. Physics came in at 10th place in 2010 and is now at 9th place. Sociology has come in at 10th place in 2011.

Table 5 Top GCE AS subject increases

Subject (2010 ranking in brackets)		Changes from 2010-2011			
		% change	2010 Number of candidates	2011 Number of candidates	
1	(6)	Chemistry	28.35	62232	79874
2	(5)	Physics	27.79	45534	58190
3	(4)	Mathematics	25.30	112847	141392
4	(1)	Mathematics (Further)	24.66	14884	18555
5	(7)	Political Studies	24.51	17462	21742
6		Geography	23.04	36819	45302
7	(10)	Biology	22.93	83408	102532
8	(13)	Religious Studies	22.25	27742	33915
9	(9)	Sociology	20.97	44612	53967
10	(16)	History	20.96	59257	71678

N.B. Geography had the ninth largest decrease reported in 2010.

Top GCE AS subject increases, 2011

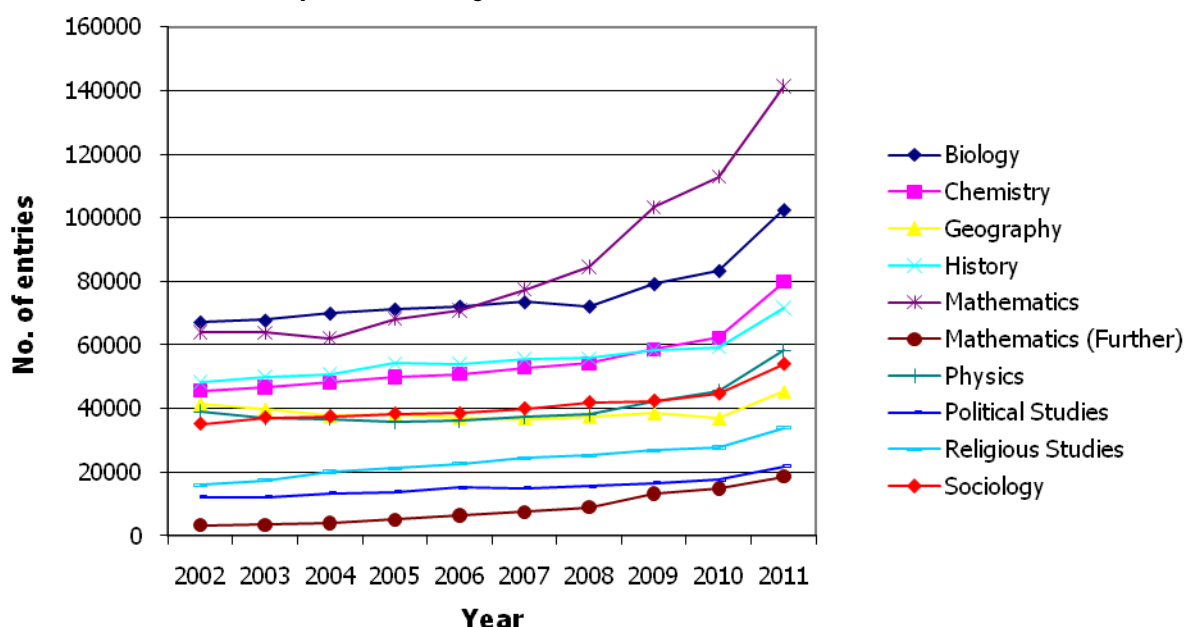
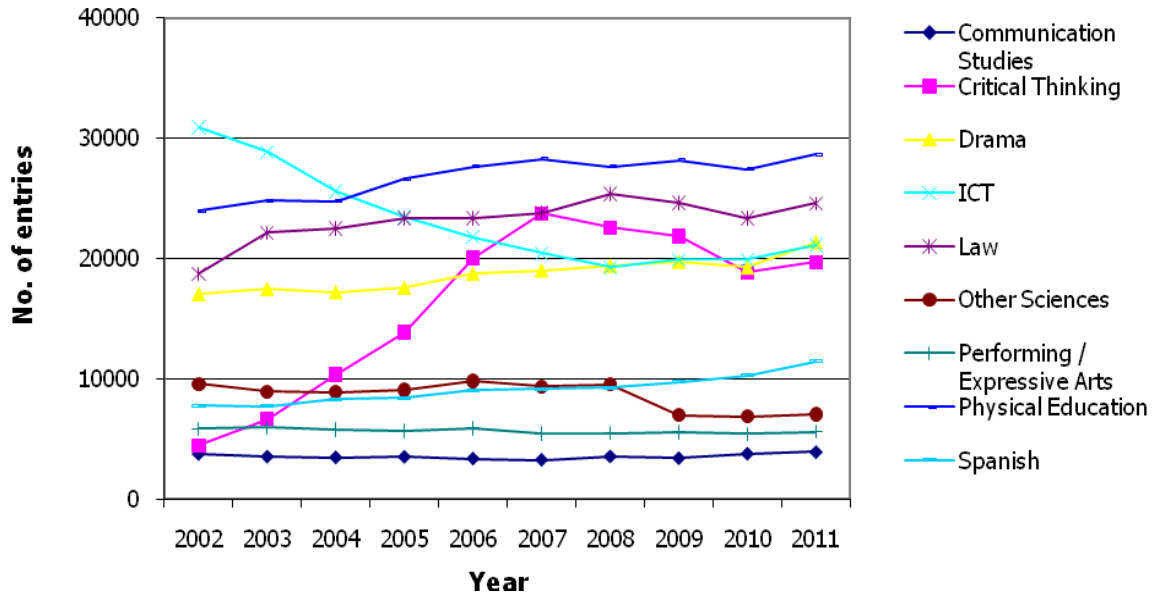


Table 6 Lowest GCE AS subject increases

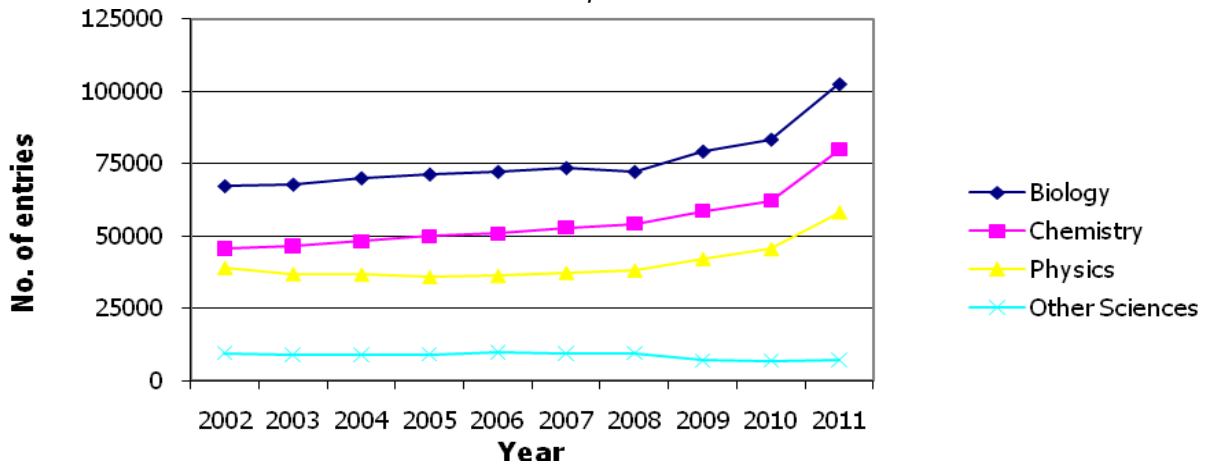
In 2011, given the change to the cashing-in requirement leading to an overall increase in entry of 17.9%, these subjects are selected since their actual increase in entry is significantly less than the overall increase.

Subject (ranking in brackets is for decreases in 2010)		Changes from 2010-2011			
		% change	2010 Number of candidates	2011 Number of candidates	
1		Other Sciences	2.78	6873	7064
2	(10)	Performing / Expressive Arts	3.63	5398	5594
3		Communication Studies	3.65	3786	3924
4	(1)	Critical Thinking	4.34	18871	19690
5		Physical Education	4.45	27435	28656
6	(5)	Law	5.28	23355	24587
7		ICT	5.98	19910	21100
8		Drama	10.99	19246	21362
9		Spanish	11.54	10250	11433

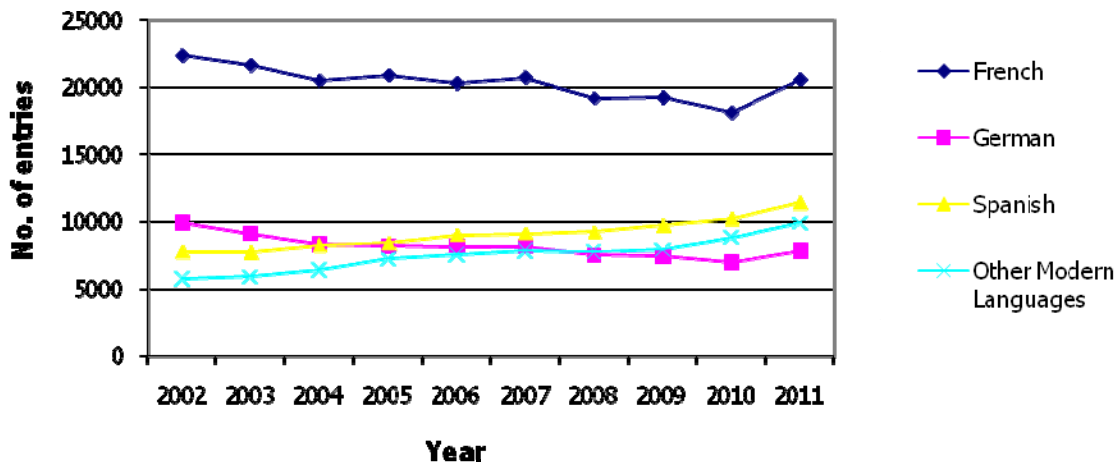
Lowest GCE AS subject increases, 2011



GCE AS Sciences, 2011



GCE AS Languages, 2011



Applied GCE trends

Table 7 Top Applied GCE A-level double award subjects (out of a total of 7 subjects)

Subject (2010 ranking in brackets)		2011	
		% of total	Number of candidates
1	(1) Health & Social Care	44.74	3326
2	(2) Business	22.28	1656
3	(3) ICT	11.21	833

Table 8 Top Applied GCE A-level single award subjects (out of a total of 10 subjects)

Subject (2010 ranking in brackets)		2011	
		% of total	Number of candidates
1	(1) ICT	31.80	11045
2	(2) Business	21.89	7601
3	(3) Health & Social Care	20.61	7156

Table 9 Top Applied GCE AS double award subjects (out of a total of 7 subjects)

Subject (2010 ranking in brackets)		2011	
		% of total	Number of candidates
1	(1) Health & Social Care	50.47	4461
2	(2) Business	18.34	1621
3	(4) Science	9.93	878

Table 10 Top Applied GCE AS single award subjects (out of a total of 10 subjects)

Subject (2010 ranking in brackets)		2011	
		% of total	Number of candidates
1	(1) ICT	30.75	16941
2	(3) Health & Social Care	22.01	12125
3	(2) Business	19.73	10869

The entries for the Applied GCE Single and Double Award A-level subjects all show a decrease from 2010.

The exceptions are:

GCE Double Award A-level Science:	increase of 7.8%
GCE Single Award A-level Health & Social Care:	increase of 0.7%
GCE Single Award A-level Science:	increase of 31.6%

Level 3 Extended Project trend

Table 11

Subject	Changes from 2010-2011		
	% change	2010 Number of candidates	2011 Number of candidates
1 Level 3 Extended Project	51.0	15958	24099

AEA trend

Table 12

Subject	Changes from 2010-2011		
	% change	2010 Number of candidates	2011 Number of candidates
1 Mathematics	-41.4	1566	918

Note: It is intended that the AEA in Mathematics will continue until a new A-level specification in Mathematics is introduced.