

TABLES - GCSE, Applied GCSE and Entry Level Trends 2010

GCSE full course trends

Chart 1 Total entry for GCSE full course subjects

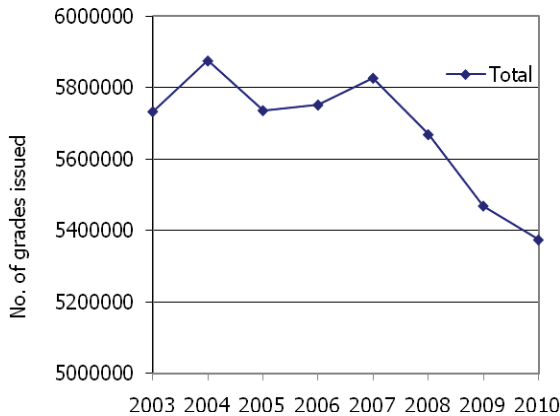


Chart 2 Cohort size

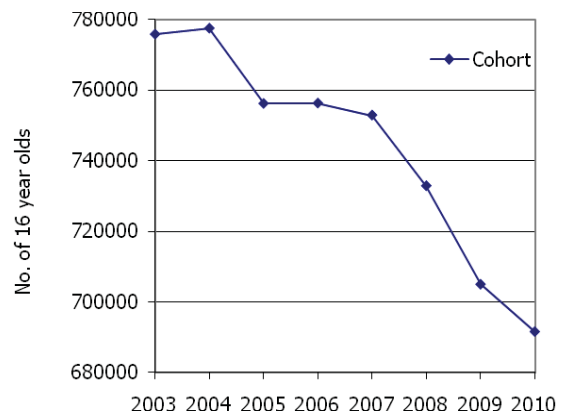


Table A Top 10 GCSE full course subjects

Subject (2009 ranking in brackets)			2010	
			% of total	Number of candidates
1	(1)	Mathematics	14.19	762792
2	(2)	English	13.12	705240
3	(3)	English Literature	9.55	513523
4	(4)	Science	8.37	449697
5	(5)	Additional Science	6.56	352469
6	(6)	Design & Technology	5.35	287701
7	(7)	History	4.12	221281
8	(8)	Geography	3.62	194599
9	(11)	Religious Studies	3.51	188704
10	(9)	Art	3.50	188193

Chart 3 Top 10 GCSE full course subjects as a percentage of the total entry

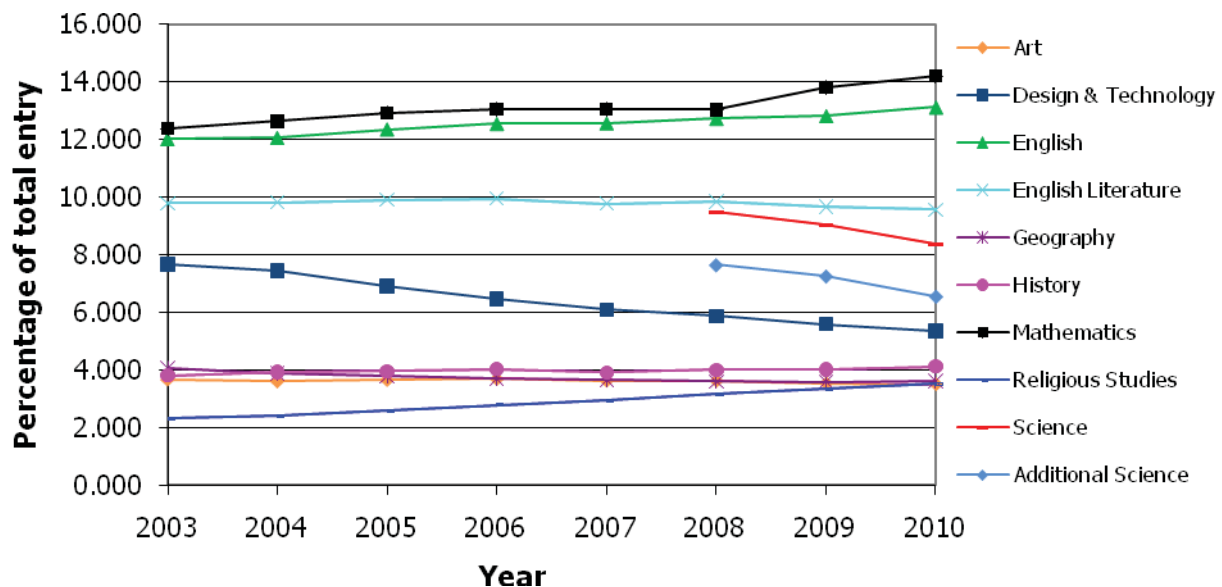


Table B Large entry (greater than 75,000) GCSE full course subject increases

Subject		Changes from 2009-2010		
		% change	2009 Number of candidates	2010 Number of candidates
(2009 ranking in brackets)				
1	(2) Chemistry	32.24	92246	121988
2	(1) Physics	32.11	91179	120455
3	(3) Biology	28.30	100905	129464
4	(5) Religious Studies	3.52	182288	188704
5	(4) Mathematics	1.07	754738	762792

N.B Mathematics is omitted from the chart below since its entry is so significantly greater than the other listed subjects.

Chart 4 Large entry (greater than 75,000) GCSE full course subject increases

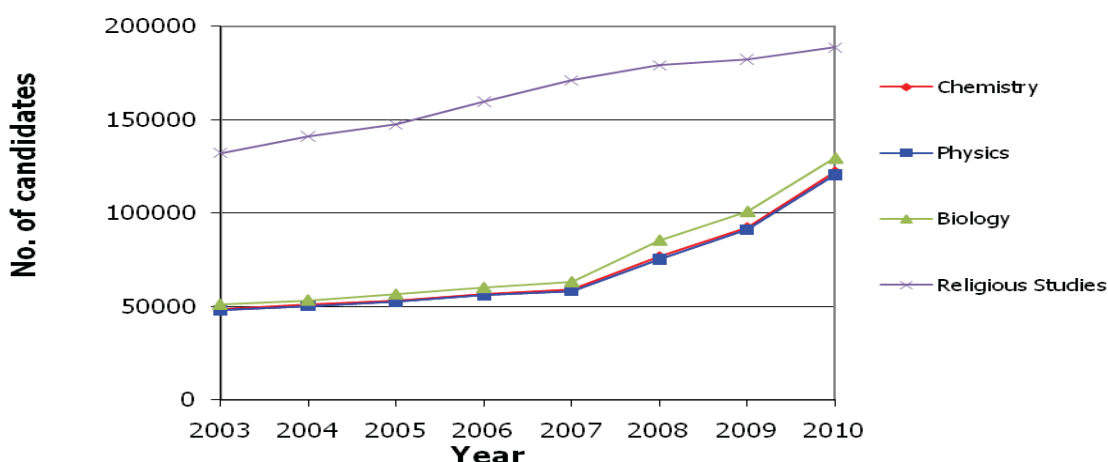


Table C Other GCSE full course subject increases (entry below 75,000)

Subject		Changes from 2009-2010		
		% change	2009 Number of candidates	2010 Number of candidates
(2009 ranking in brackets)				
1	(16) Economics	5.96	2901	3074
2	(13) Classical subjects	3.47	15350	15882
3	(6) Spanish	0.95	67070	67707

Chart 5 Other GCSE full course subject increases (entry below 75,000)

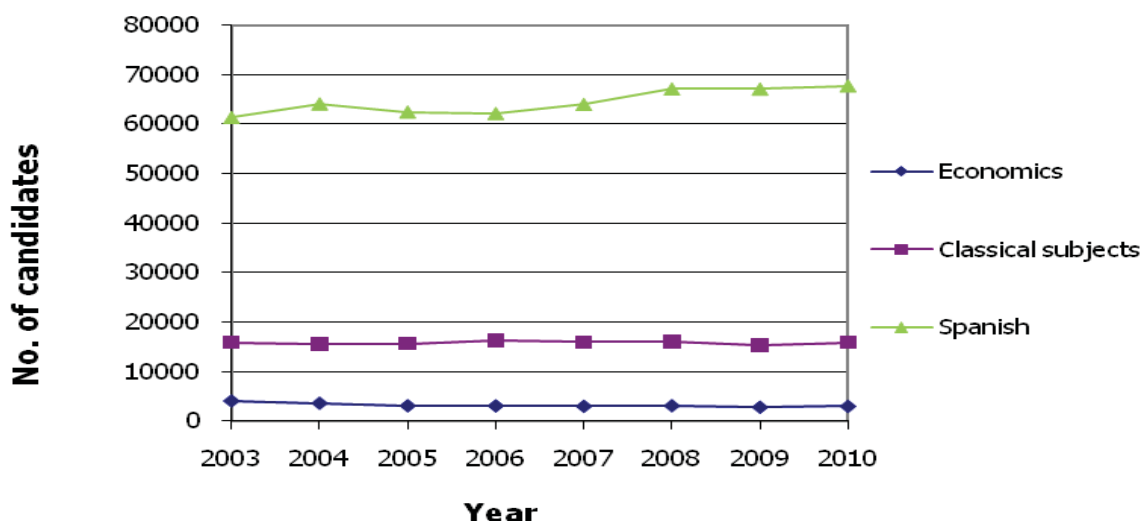


Table D Large entry (greater than 75,000) GCSE full course subject decreases

Subject (2009 ranking in brackets)		Changes from 2009-2010		
		% change	2009 Number of candidates	2010 Number of candidates
1 (1)	Additional Science	-11.20	396946	352469
2 (2)	Physical Education	-9.31	136631	123907
3 (3)	Science	-8.88	493505	449697
4 (9)	Business Studies	-7.23	83459	77428
5 (5)	Drama	-6.11	93019	87336

Chart 6 Large entry (greater than 75,000) GCSE full course subject decreases

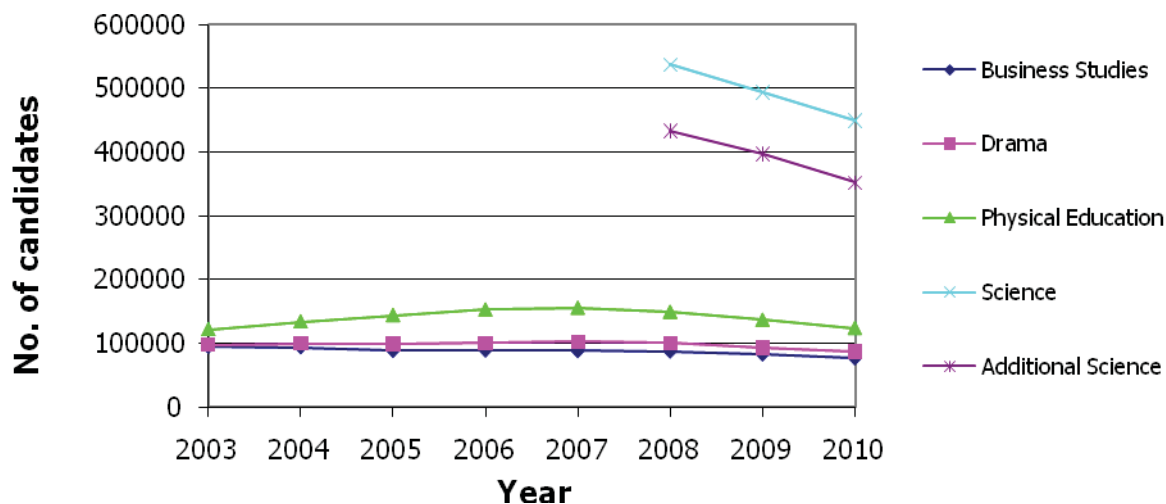
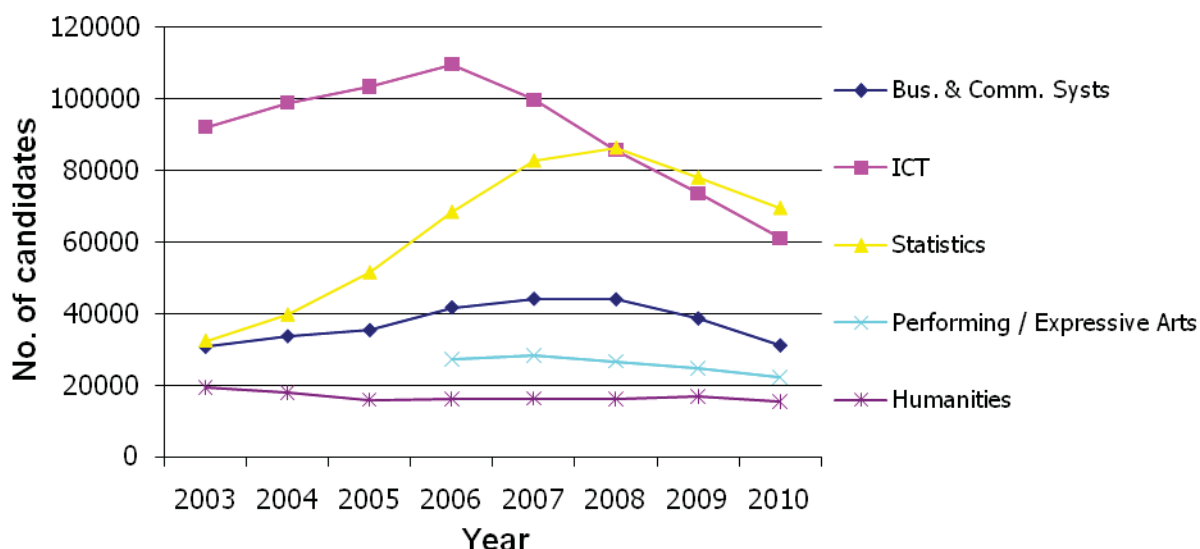


Table E Other GCSE full course subject decreases (entry below 75,000)

Subject (2009 ranking in brackets)		Changes from 2009-2010		
		% change	2009 Number of candidates	2010 Number of candidates
1 (2)	Business & Communication Systems	-19.39	38579	31098
2 (1)	Information & Communication Technology	-17.00	73519	61022
3 (6)	Statistics	-10.89	77944	69456
4 (9)	Performing / Expressive Arts	-9.58	24650	22288
5	Humanities	-7.96	16816	15477

NB Humanities had the third largest increase in 2009.

Chart 7 Other GCSE full course subject decreases (entry below 75,000)



GCSE short course trends

Table F Top GCSE short course subjects

Subject (2009 ranking in brackets)			2010	
			% of total	Number of candidates
1	(1)	Religious Studies	57.35	279954
2	(2)	Citizenship Studies	19.39	94635
3	(3)	Information and Communication Technology.	9.20	44891
4	(4)	Physical Education	5.96	29080
5	(5)	Welsh: Second Language	2.56	12489

Chart 8 Top GCSE short course subjects

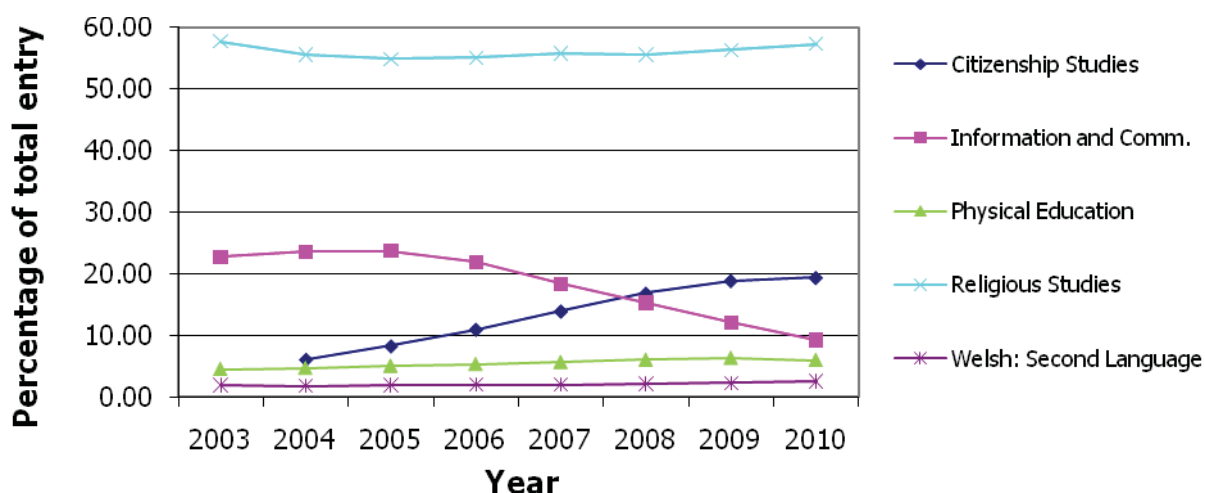


Table G Top GCSE short course subject increases

Subject (2009 ranking in brackets)		Changes from 2009-2010		
		% change	2009 Number of candidates	2010 Number of candidates
1	Social Science Subjects	772.95	292	2549
2	German	139.06	233	557
3	Design & Technology	65.89	4078	6765
4	French	63.11	1388	2264
5	Spanish	19.60	602	720

Chart 9 Top GCSE short course subject increases

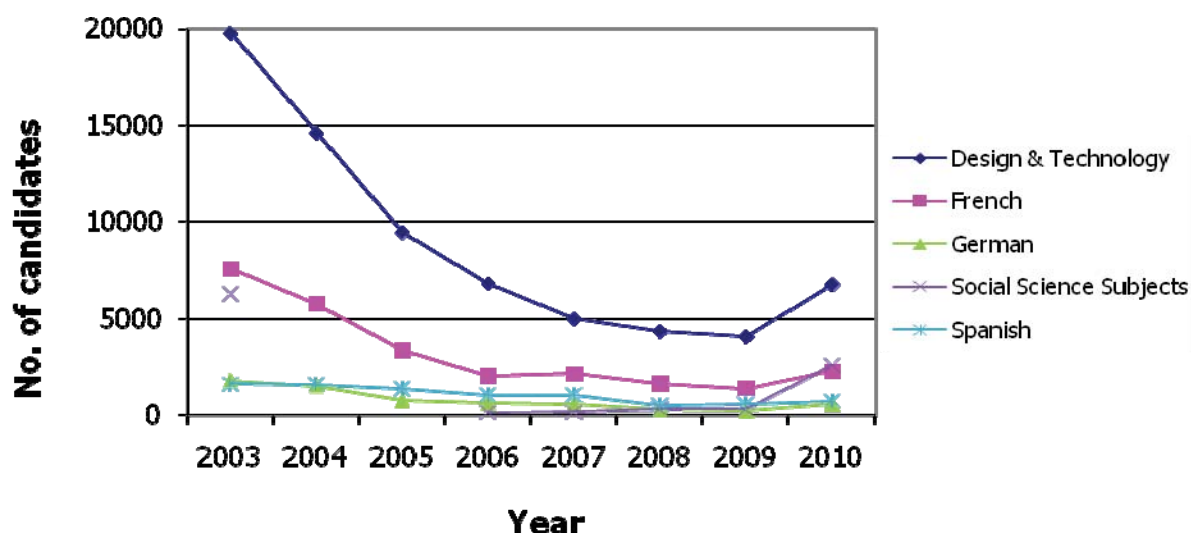
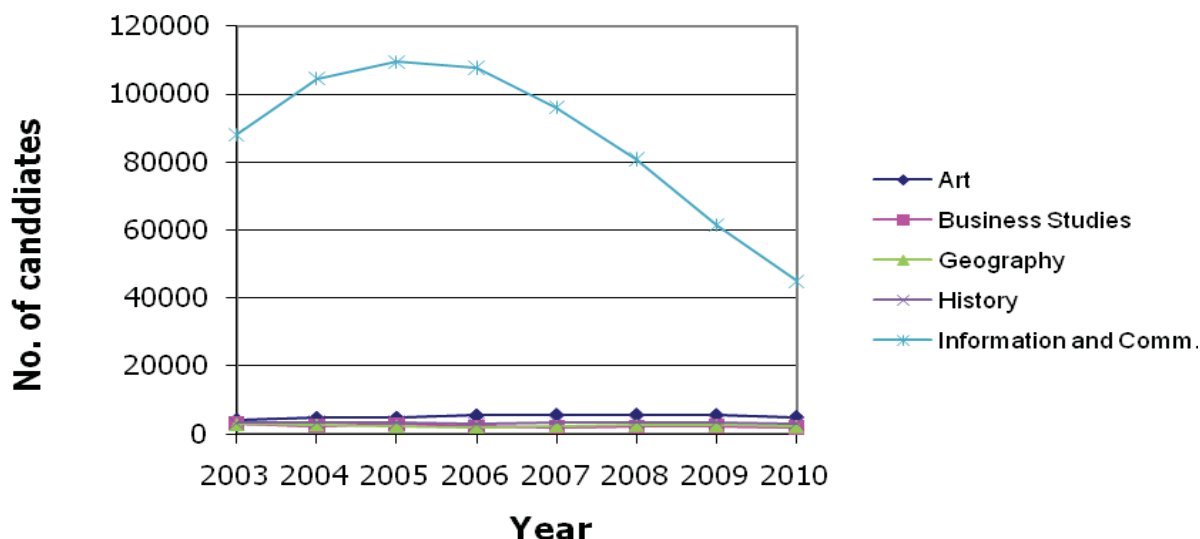


Table H Top GCSE short course subject decreases

Subject (2009 ranking in brackets)		Changes from 2009-2010		
		% change	2009 Number of candidates	2010 Number of candidates
1	(1) Information and Communication Technology	-26.94	61443	44891
2	Business Studies	-18.15	2309	1890
3	Geography	-10.83	2530	2256
4	History	-10.83	3537	3154
5	(3) Art	-10.04	5550	4993

Chart 10 Top GCSE short course subject decreases

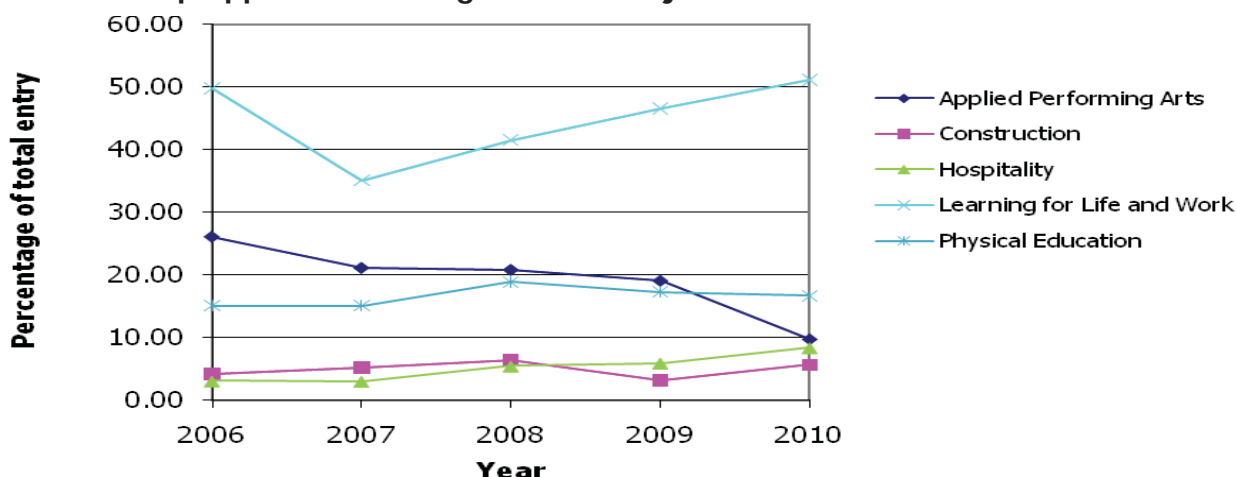


Applied GCSE Single Award trends

Table I Top Applied GCSE Single Award subjects

Subject (2009 ranking in brackets)		2010	
		% of total	Number of candidates
1	(1) Learning for Life and Work	51.13	9543
2	(3) Physical Education	16.66	3110
3	(2) Applied Performing Arts	9.75	1820
4	(4) Hospitality	8.34	1556
5	(6) Construction	5.65	1054

Chart 14 Top Applied GCSE Single Award subjects



Applied GCSE Double Award trends

Table J Top Applied GCSE Double Award subjects

Subject (2009 ranking in brackets)			2010	
			% of total	Number of candidates
1	(1)	Health & Social Care	24.34	18579
2	(2)	Applied Science	24.09	18385
3	(3)	Applied Business	15.46	11802
4	(4)	Leisure & Tourism	9.10	6948
5	(5)	Applied ICT	7.61	5810

Chart 11 Top Applied GCSE Double Award subjects

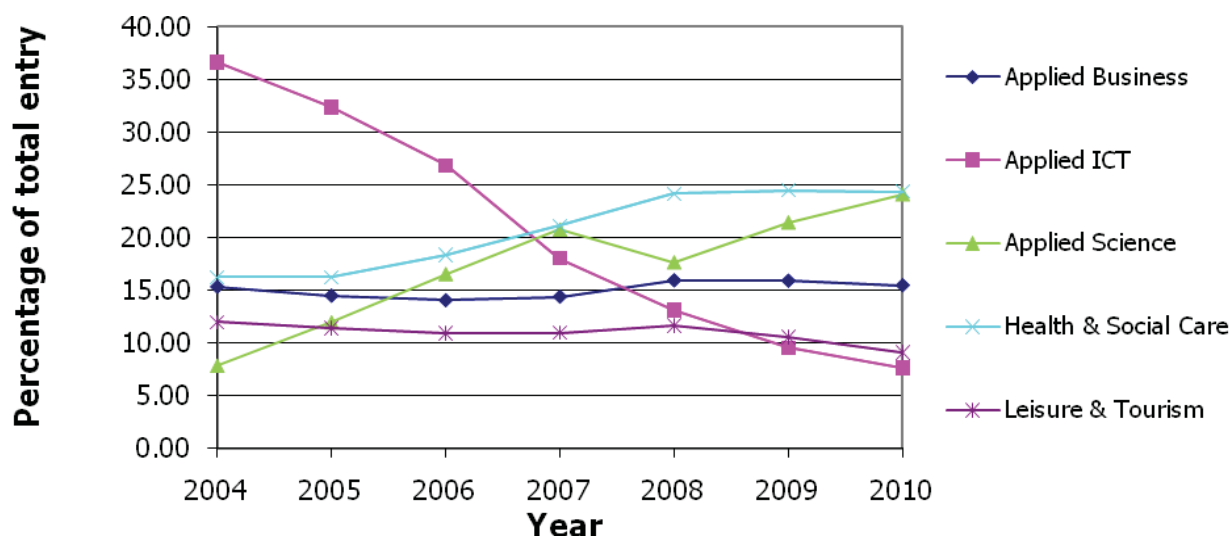


Table K Applied GCSE Double Award subject increases

Subject (2009 ranking in brackets)			Changes from 2009-2010		
			% change	2009 Number of candidates	2010 Number of candidates
1	(1)	Media	430.41	319	1692
2	(2)	Hospitality	14.70	449	515
3		Physical Education	5.59	1181	1247
4		Applied Performing Arts	3.48	1409	1458

Chart 12 Applied GCSE Double Award subject increases

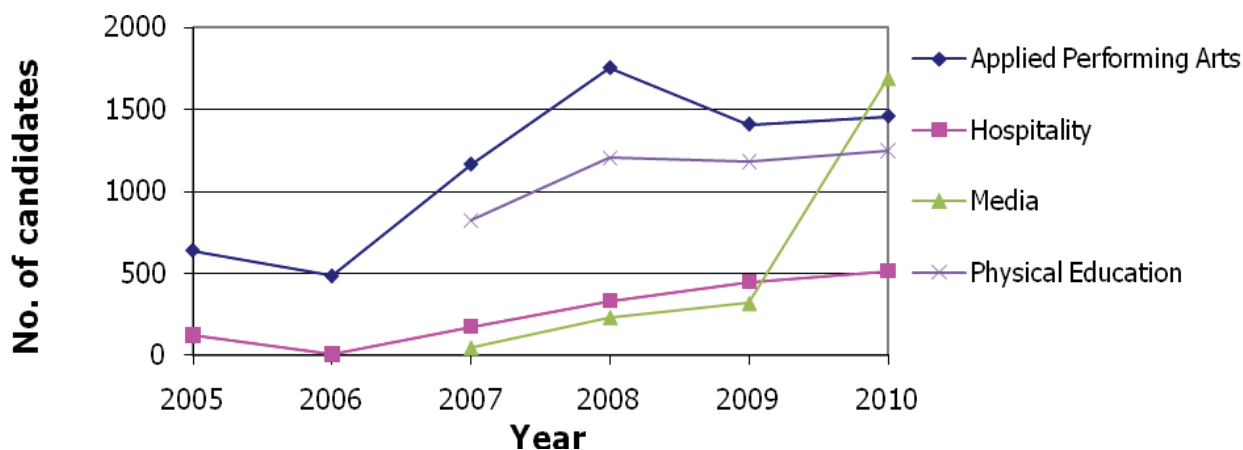
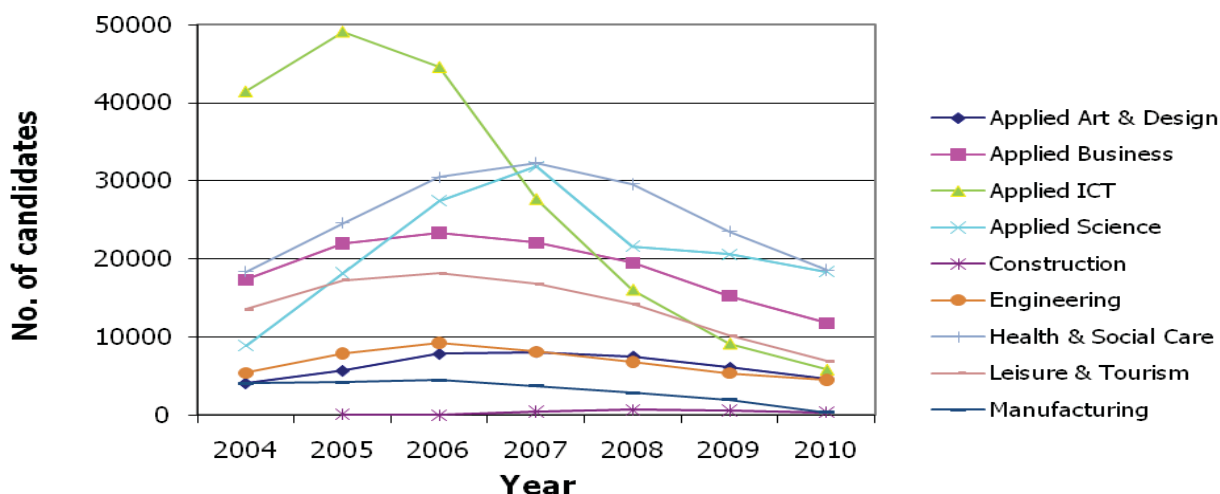


Table L Top Applied GCSE Double Award subject decreases

Subject (2009 ranking in brackets)		Changes from 2009-2010		
		% change	2009 Number of candidates	2010 Number of candidates
1	(2) Manufacturing	-80.92	1992	380
2	(9) Construction	-37.48	571	357
3	(1) Applied ICT	-36.56	9158	5810
4	(3) Leisure & Tourism	-31.62	10161	6948
5	(8) Applied Art & Design	-24.25	6090	4613
6	(4) Applied Business	-22.72	15272	11802
7	(6) Health & Social Care	-21.02	23523	18579
8	(5) Engineering	-15.99	5396	4533
9	(10) Applied Science	-10.74	20596	18385

Chart 13 Top Applied GCSE Double Award subject decreases



Entry Level trends

Table M Top Entry Level subjects

Subject (2009 ranking in brackets)		2010	
		% of total	Number of candidates
1	(1) English	17.48	18467
2	(2) Mathematics	13.85	14627
3	(4) Physical Education	10.69	11291
4	(3) Science Single Award	10.50	11089
5	(5) Religious Studies	8.31	8781

Chart 15 Top Entry Level subjects

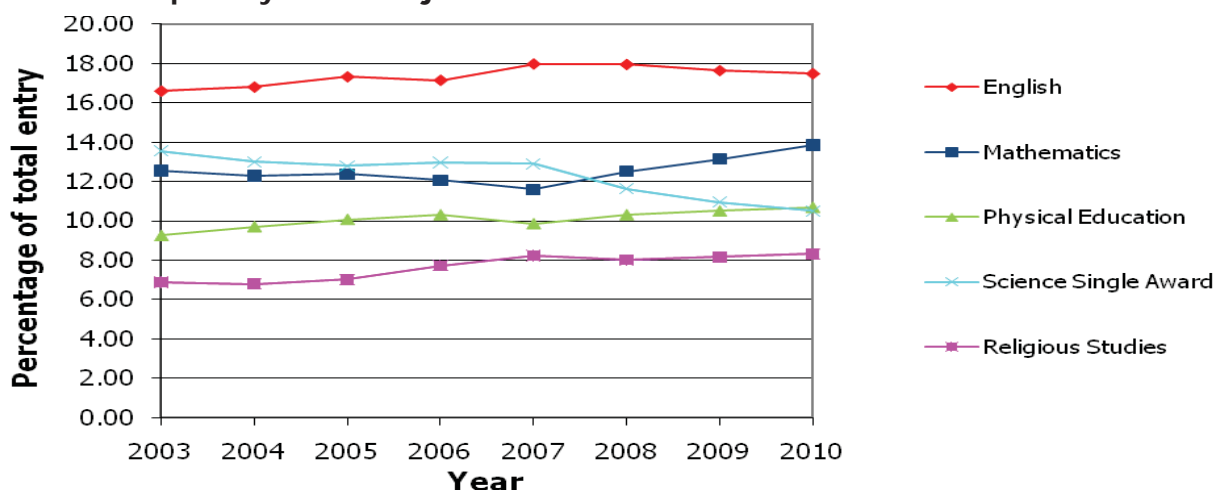


Table N Top Entry Level increases

Subject		Changes from 2009-2010		
		% change	2009 Number of candidates	2010 Number of candidates
(2009 ranking in brackets)				
1	Science Double Award	28.89	540	696
2	Humanities	22.53	728	892
3	Design & Technology	4.58	5960	6233
4	Art	1.54	2913	2958
5	Drama	1.31	761	771

Chart 16 Top Entry Level increases

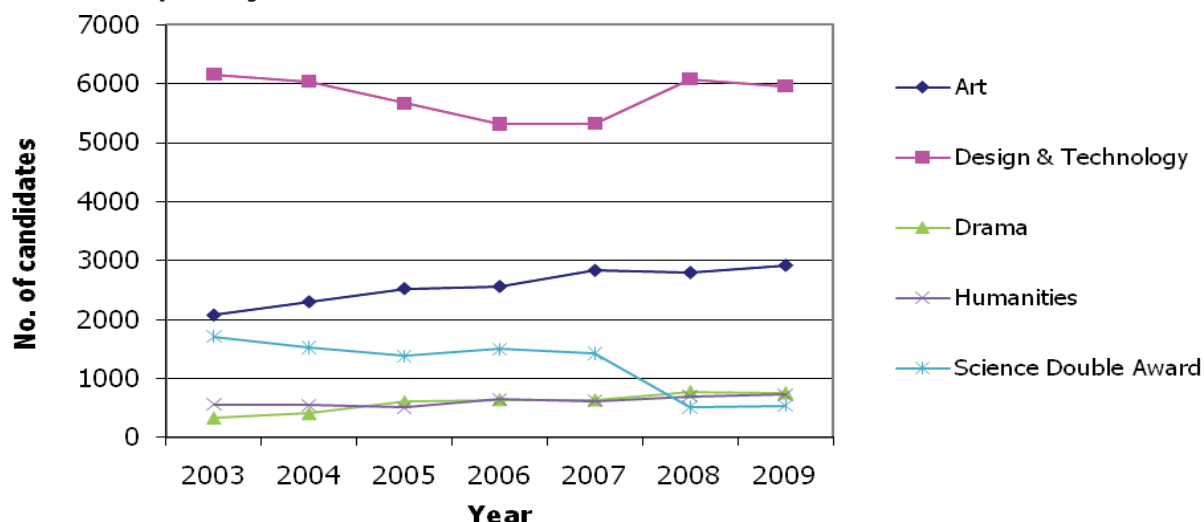


Table O Top Entry Level decreases

Subject		Changes from 2009-2010		
		% change	2009 Number of candidates	2010 Number of candidates
(2009 ranking in brackets)				
1	(3) German	-35.07	1936	1257
2	Other Modern Languages	-30.73	397	275
3	(2) Music	-29.34	351	248
4	(4) Spanish	-27.14	3103	2261
5	Business Studies	-20.17	1800	1437

Chart 17 Top Entry Level decreases

