

TABLES - GCSE, Project and Entry Level Trends, 2011

GCSE Full Course trends

Chart 1 Total entry for GCSE full course subjects

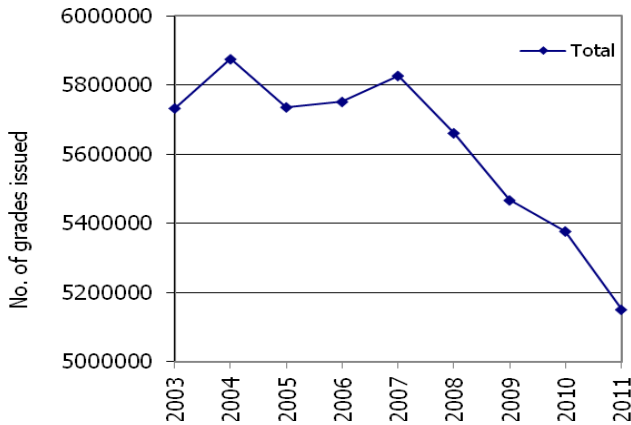


Chart 2 Cohort size

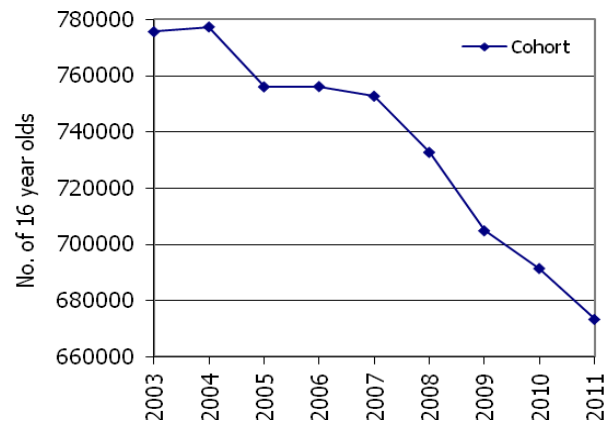


Table A Top 10 GCSE full course subjects, 2011

Subject (2010 ranking in brackets)		2011	
		% of total	Number of candidates
1 (1)	Mathematics	15.00	772944
2 (2)	English	12.61	649553
3 (3)	English Literature	9.51	490056
4 (4)	Science	7.88	405977
5 (5)	Additional Science	5.95	306312
6 (6)	Design & Technology	4.92	253624
7 (9)	Religious Studies	4.31	221974
8 (7)	History	4.24	218588
9 (10)	Art & Design	3.56	183236
10 (8)	Geography	3.51	180737

Chart 3 Top 10 GCSE full course subjects as a percentage of the total entry

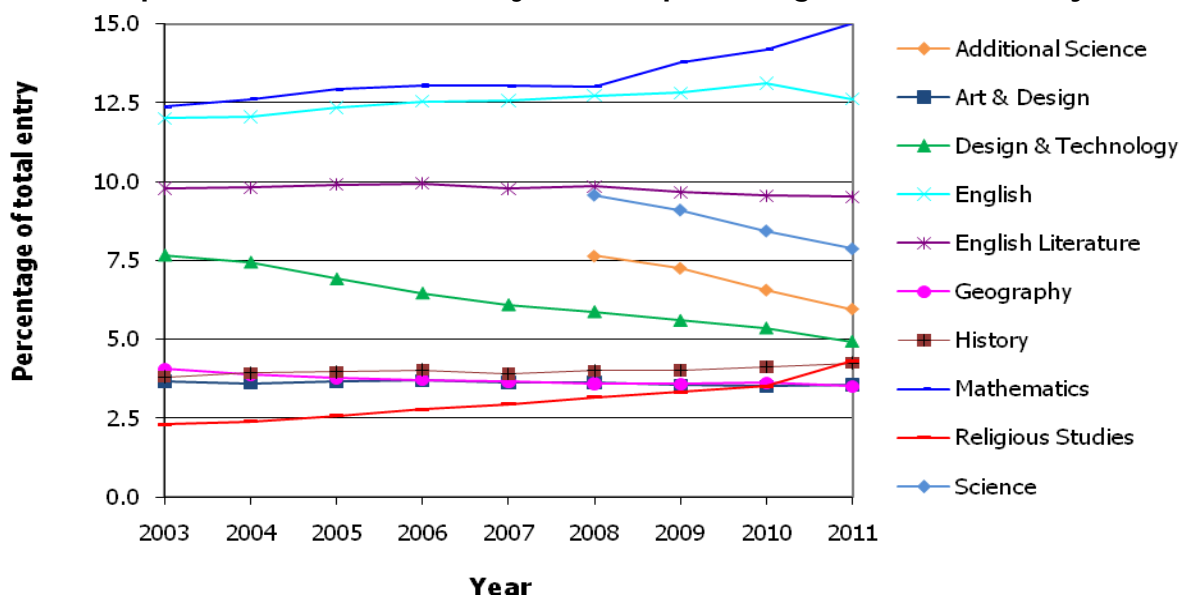


Table B Large entry (greater than 100,000) GCSE Full Course subject increases

Subject		Changes from 2010-2011			
		% change	2010 Number of candidates	2011 Number of candidates	
(2010 ranking in brackets)					
1	(4)	Religious Studies	17.63	188704	221974
2	(2)	Physics	16.38	120455	140183
3	(1)	Chemistry	16.18	121988	141724
4	(3)	Biology	14.24	129464	147904
5	(5)	Mathematics	1.33	762792	772944

N.B Mathematics is omitted from the chart below since its entry is significantly greater than the other listed subjects. However, the same five subjects listed in 2010 continue to show the largest increases in 2011.

Chart 4 Large entry (greater than 100,000) GCSE full course subject increases

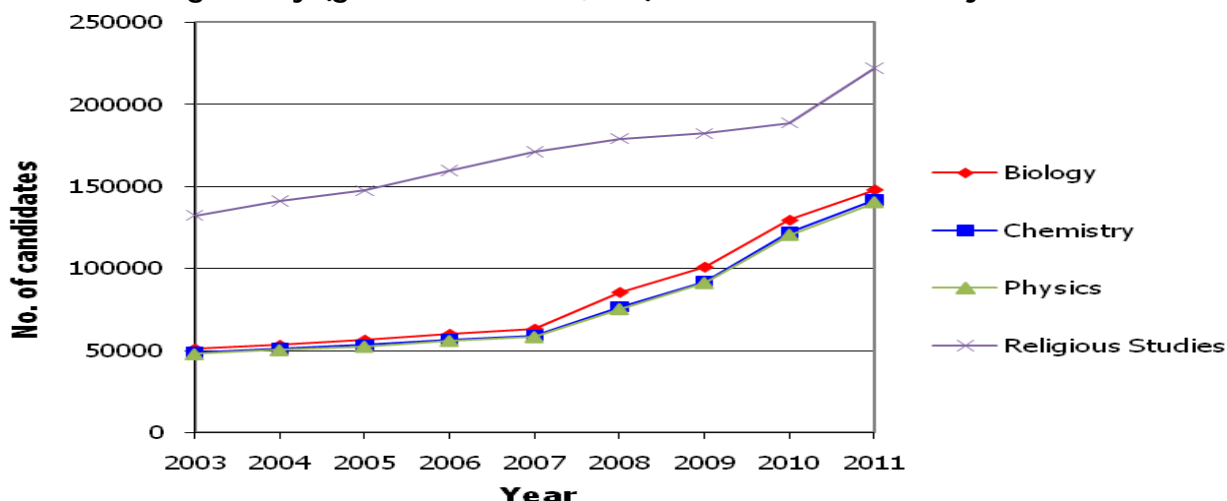


Table C Other GCSE full course subject increases (entry below 100,000)

Subject		Changes from 2010-2011			
		% change	2010 Number of candidates	2011 Number of candidates	
(2010 ranking in brackets)					
1	(1)	Economics	19.49	3074	3673
2		Social Science subjects	15.30	30274	34905
3		Humanities	11.64	15477	17279
4		Other Technology	5.80	1327	1404

Chart 5 Other GCSE full course subject increases (entry below 100,000)

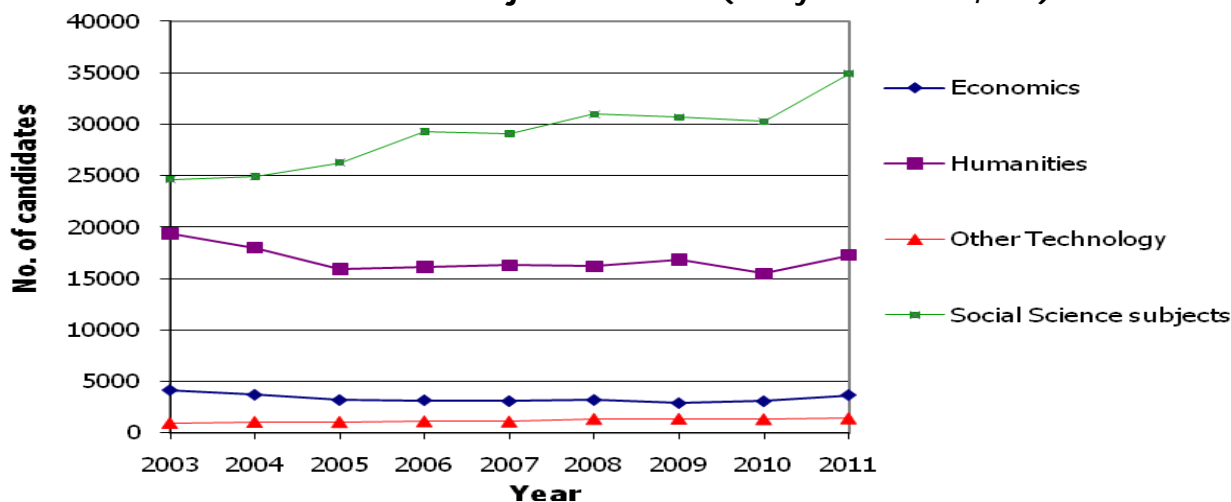


Table D Large entry (greater than 100,000) GCSE full course subject decreases

Subject (2010 ranking in brackets)		Changes from 2010-2011		
		% change	2010 Number of candidates	2011 Number of candidates
1	(3) Science	-11.77	453757	405977
2	Design & Technology	-13.44	287701	253624
3	(1) Additional Science	-15.07	352469	306312
4	French	-15.17	177618	154221
5	(2) Physical Education	-17.21	127017	108369

Chart 6 Large entry (greater than 100,000) GCSE full course subject decreases

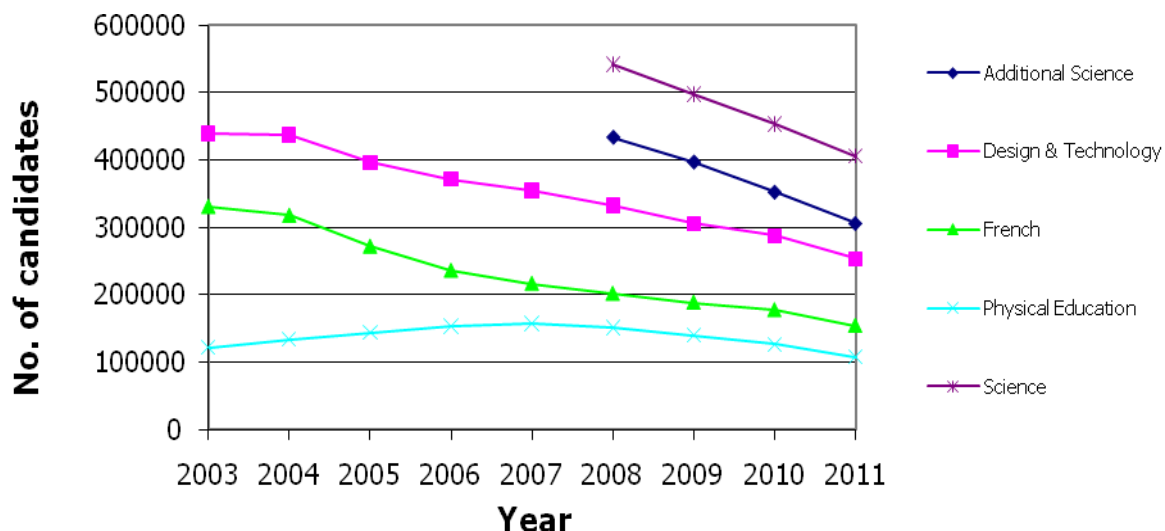
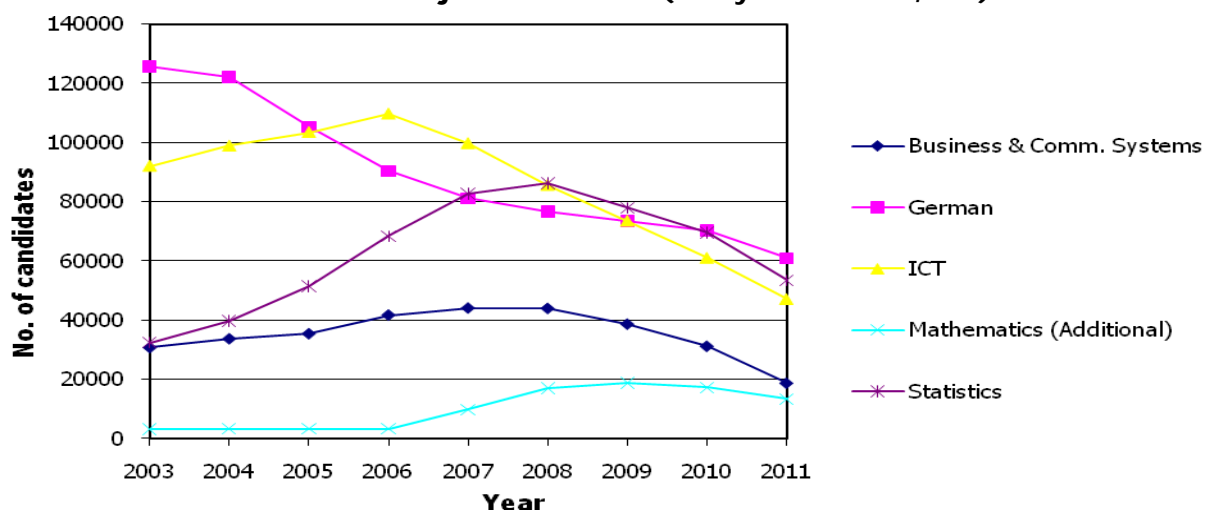


Table E Other GCSE full course subject decreases (entry below 100,000)

Subject (2010 ranking in brackets)		Changes from 2010-2011		
		% change	2010 Number of candidates	2011 Number of candidates
1	(1) Business & Comm. Systems	-40.06	31098	18639
2	(3) Statistics	-23.12	69456	53400
3	(2) ICT	-22.77	61022	47128
4	Mathematics (Additional)	-22.70	17183	13282
5	German	-13.23	70169	60887

Chart 7 Other GCSE full course subject decreases (entry below 100,000)



GCSE short course trends

Table F Top GCSE short course subjects, 2011

Subject (2010 ranking in brackets)		2011	
		% of total	Number of candidates
1	(1) Religious Studies	52.81	257793
2	(2) Citizenship Studies	15.27	74557
3	(3) Information and Comm.	6.13	29931
4	(4) Physical Education	4.30	20986
5	(5) Welsh: Second Language	2.62	12784

Chart 8 Top GCSE short course subjects

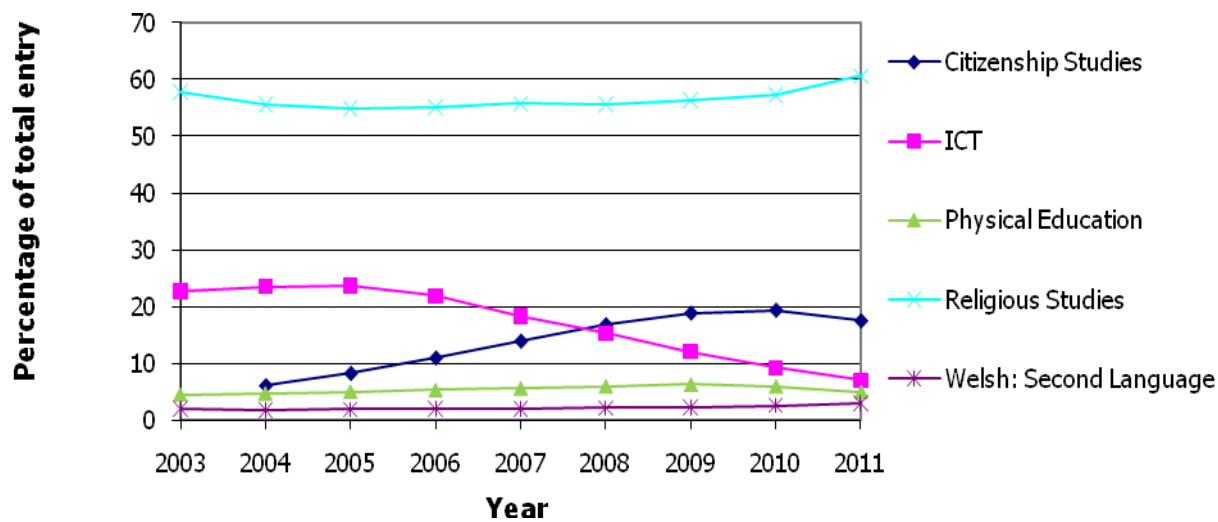


Table G Top GCSE short course subject increases, 2011

Subject (2010 ranking in brackets)		Changes from 2010-2011		
		% change	2010 Number of candidates	2011 Number of candidates
1	Other modern languages	397.08	377	1874
2	Economics	316.11	298	1240
3	(2) German	95.51	557	1089
4	Classical Subjects	68.30	672	1131
5	(4) French	63.43	2264	3700
6	(5) Spanish	53.61	720	1106

Chart 9 Top GCSE short course subject increases

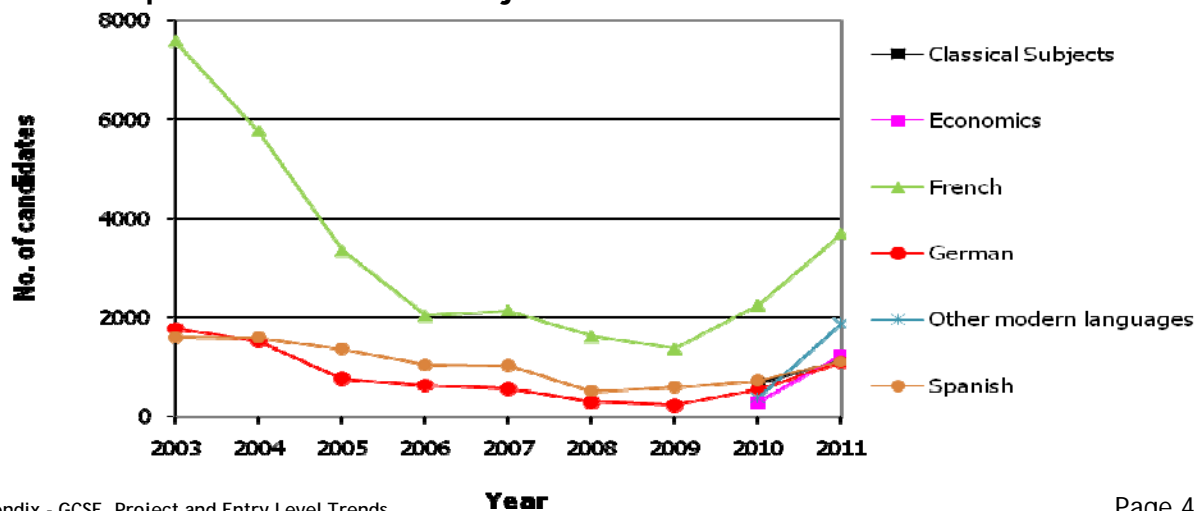
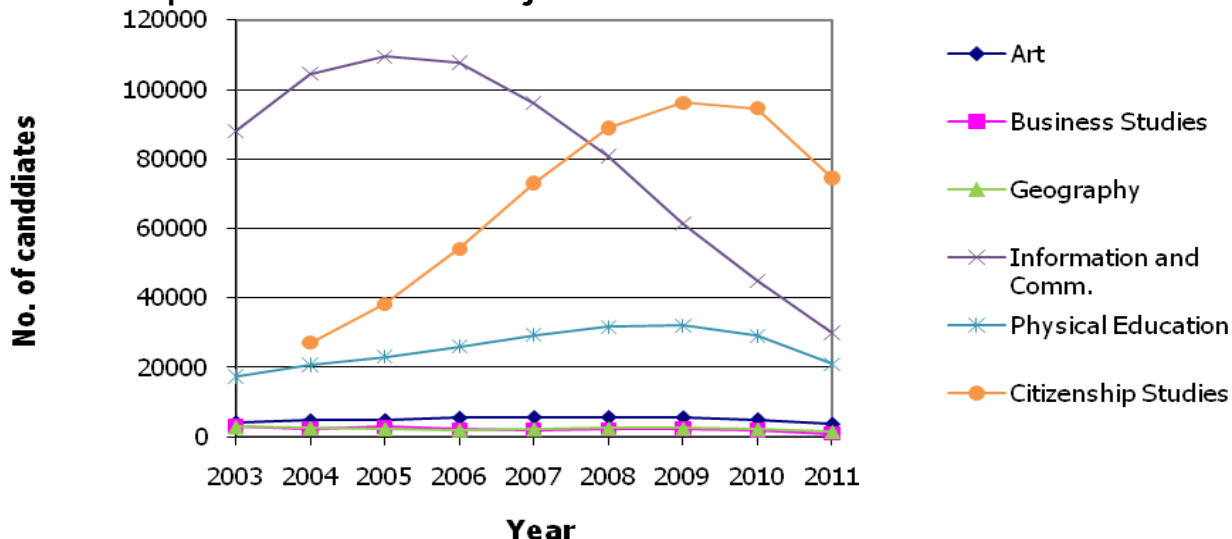


Table H Top GCSE short course subject decreases, 2011

Subject (2010 ranking in brackets)		Changes from 2010-2011		
		% change	2010 Number of candidates	2011 Number of candidates
1	Business Studies	-47.41	1890	994
2 (1)	Information and Comm.	-33.33	44891	29931
3 (3)	Geography	-29.92	2256	1581
4	Physical Education	-27.83	29080	20986
5 (5)	Art	-26.00	4993	3695
6	Citizenship Studies	-21.22	94635	74557

Chart 10 Top GCSE short course subject decreases



GCSE Double Award trends

Table I Top GCSE Double Award subjects, 2011

Subject (2010 ranking in brackets)		2011	
		% of total	Number of candidates
1 (2)	Science	26.06	14547
2 (1)	Health & Social Care	15.88	8867
3	Science: Double Award (Northern Ireland only)	13.62	7602
4 (3)	Business	8.53	4760
5	Media	7.19	4016

Chart 11 Top GCSE Double Award subjects

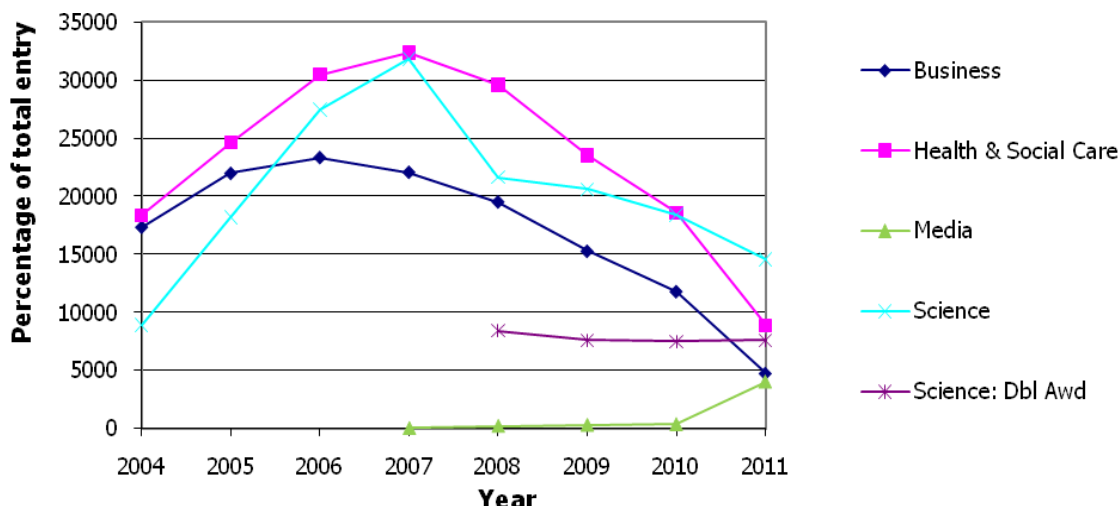


Table J Top GCSE Double Award subject increases, 2011

Subject (2010 ranking in brackets)		Changes from 2010-2011		
		% change	2010 Number of candidates	2011 Number of candidates
1	Media	956.84	380	4016
2 (3)	Physical Education	217.00	1247	3953
3 (2)	Hospitality	247.57	515	1790
4	Science: Dbl Awd	1.40	7497	7602

Chart 12 Top GCSE Double Award subject increases

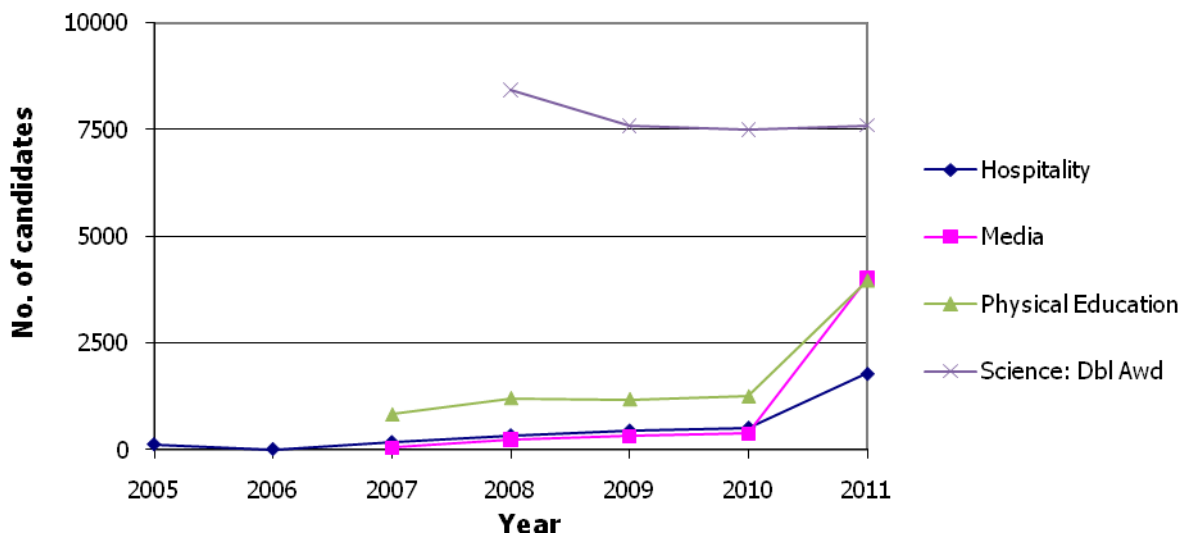
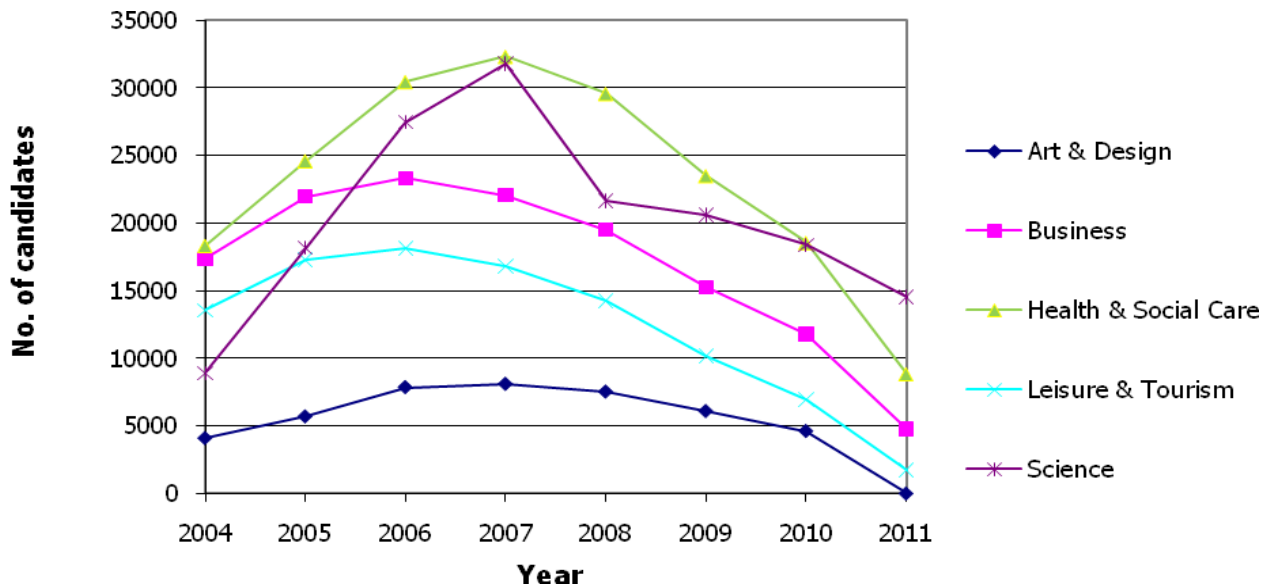


Table K Top GCSE Double Award subject decreases, 2011

Subject (2010 ranking in brackets)		Changes from 2010-2011		
		% change	2010 Number of candidates	2011 Number of candidates
1 (6)	Business	-59.67	11802	4760
2 (7)	Health & Social Care	-52.27	18579	8867
3 (4)	Leisure & Tourism	-74.67	6948	1760
4 (9)	Science	-20.88	18385	14547

Chart 13 Top GCSE Double Award subject decreases



Entry Level trends

Table L Top Entry Level subjects, 2011

Subject (2010 ranking in brackets)			2011	
			% of total	Number of candidates
1	(1)	English	16.12	14721
2	(2)	Mathematics	15.18	13864
3	(3)	Science	10.78	9841
4	(4)	Physical Education	10.74	9807
5	(5)	Religious Studies	8.33	7609

Chart 14 Top Entry Level subjects

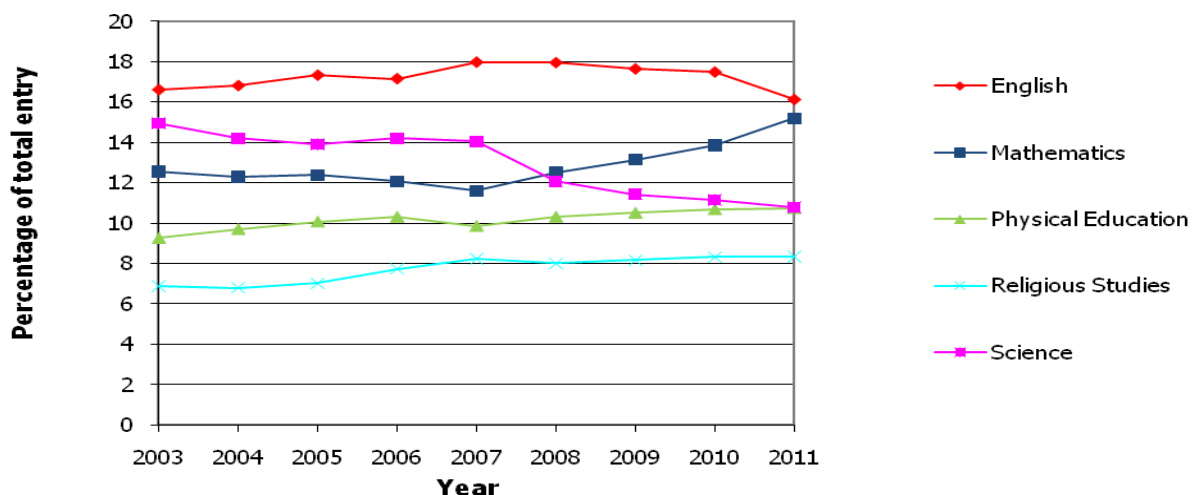


Table M Top Entry Level increases, 2011

Subject (2010 ranking in brackets)		Changes from 2010-2011		
		% change	2010 Number of candidates	2011 Number of candidates
1	Music	29.03	248	320
2	Home Economics	12.35	2049	2302
3	(1) Humanities	11.43	892	994
4	(4) Art	11.02	2958	3284

Chart 15 Top Entry Level increases

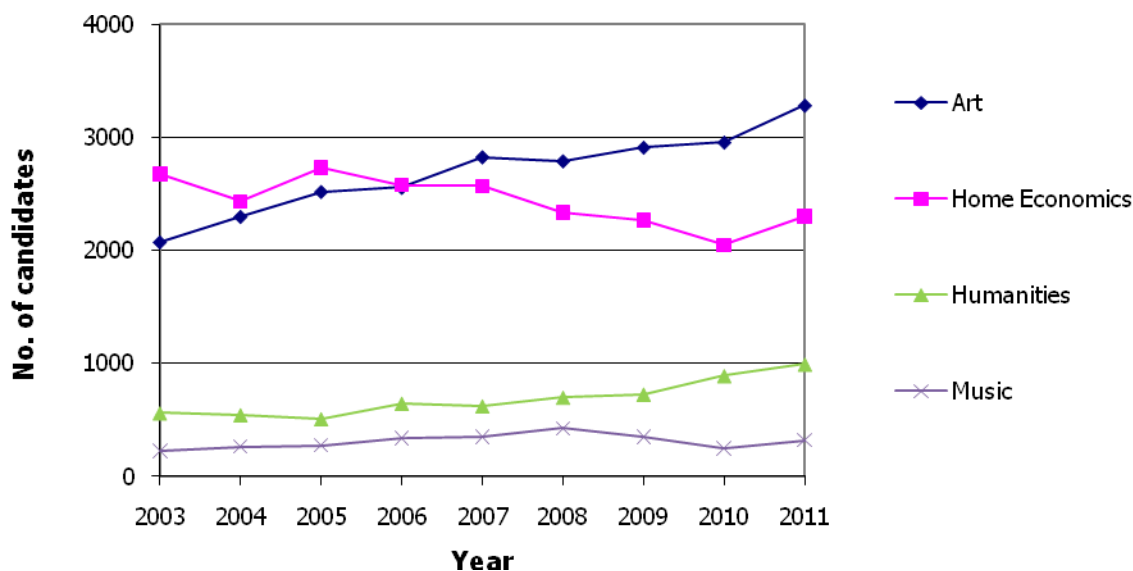
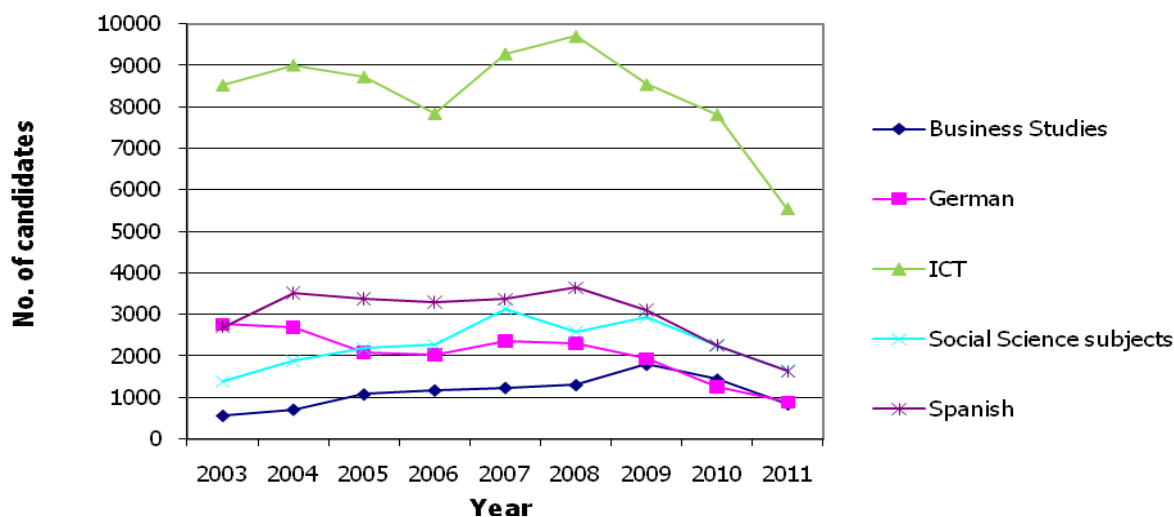


Table N Top Entry Level decreases

Subject (2010 ranking in brackets)		Changes from 2010-2011		
		% change	2010 Number of candidates	2011 Number of candidates
1	Business Studies	-41.61	1437	839
2	ICT	-29.14	7814	5537
3 (1)	German	-29.04	1257	892
4 (4)	Spanish	-27.86	2261	1631
5	Social Science subjects	-26.85	2238	1637

Chart 16 Top Entry Level decreases



Diploma award trends

	Higher			Foundation		
	2009	2010	2011	2009	2010	2011
Business, Administration and Finance	NA	38	787	NA	18	33
Construction and the Built Environment	3	284	466	9	125	118
Creative and Media	28	884	2230	37	94	129
Engineering	15	871	1521	3	192	256
Environmental and Land Based Studies	NA	3	200	NA	2	54
Hair and Beauty Studies	NA	0	306	NA	5	211
Hospitality	NA	12	161	NA	5	47
Information Technology	36	541	1354	56	105	76
Manufacturing and Product Development	NA	0	52	NA	0	7
Public Services	NA	NA	10	NA	NA	0
Retail Business	NA	NA	4	NA	NA	0
Society, Health and Development	9	436	861	16	87	182
Sport and Active Leisure	NA	NA	0	NA	NA	3
Travel and Tourism	NA	NA	1	NA	NA	0
All Diploma Lines of Learning	91	3069	7953	121	633	1116

Key: NA means that the Line of Learning was not accredited for awards in the year.

Project trends

Level 2 Project has an increase in entry of 119.3%. 21888 grades issued in 2011 which far exceeds the number achieving a Principal Learning Level 2 qualification (14363) or a Higher Diploma (7953).

Level 1 Project has an increase in entry of 110.0%. 4872 grades issued in 2011 which far exceeds the number achieving a Principal Learning Level 1 qualification (2499) or a Foundation Diploma (1116).