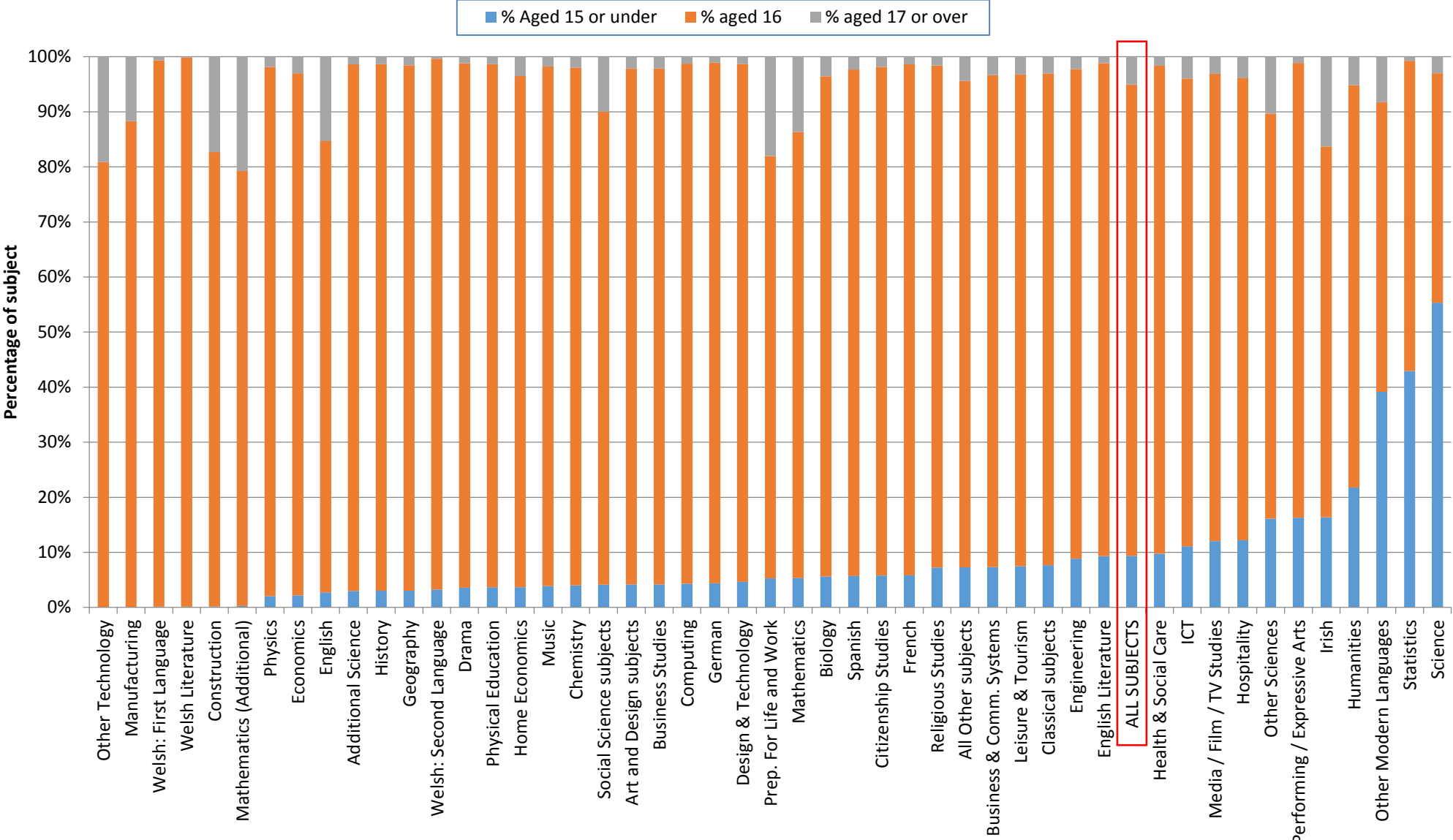


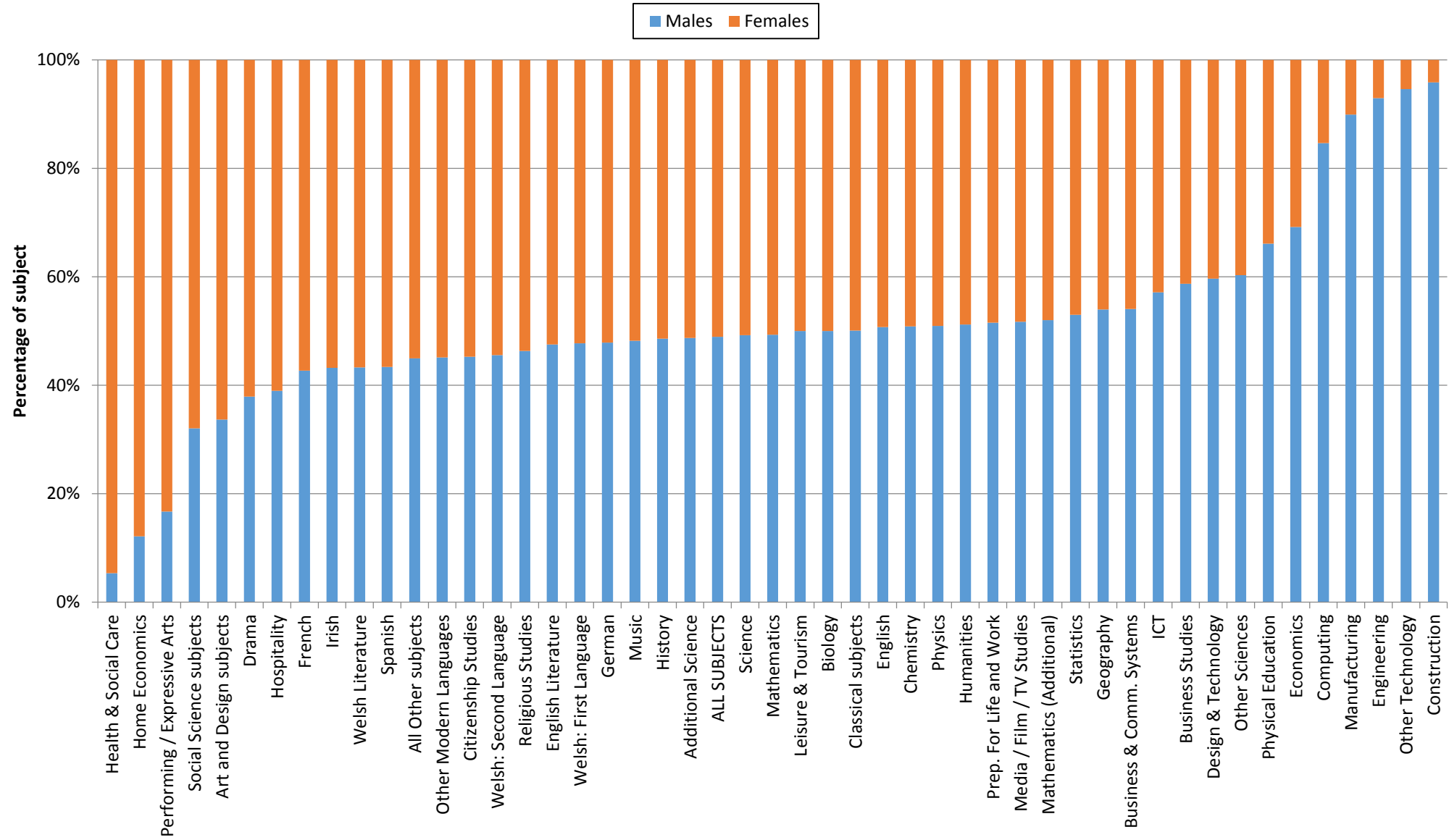
Differences between GCSE subject choices by age group



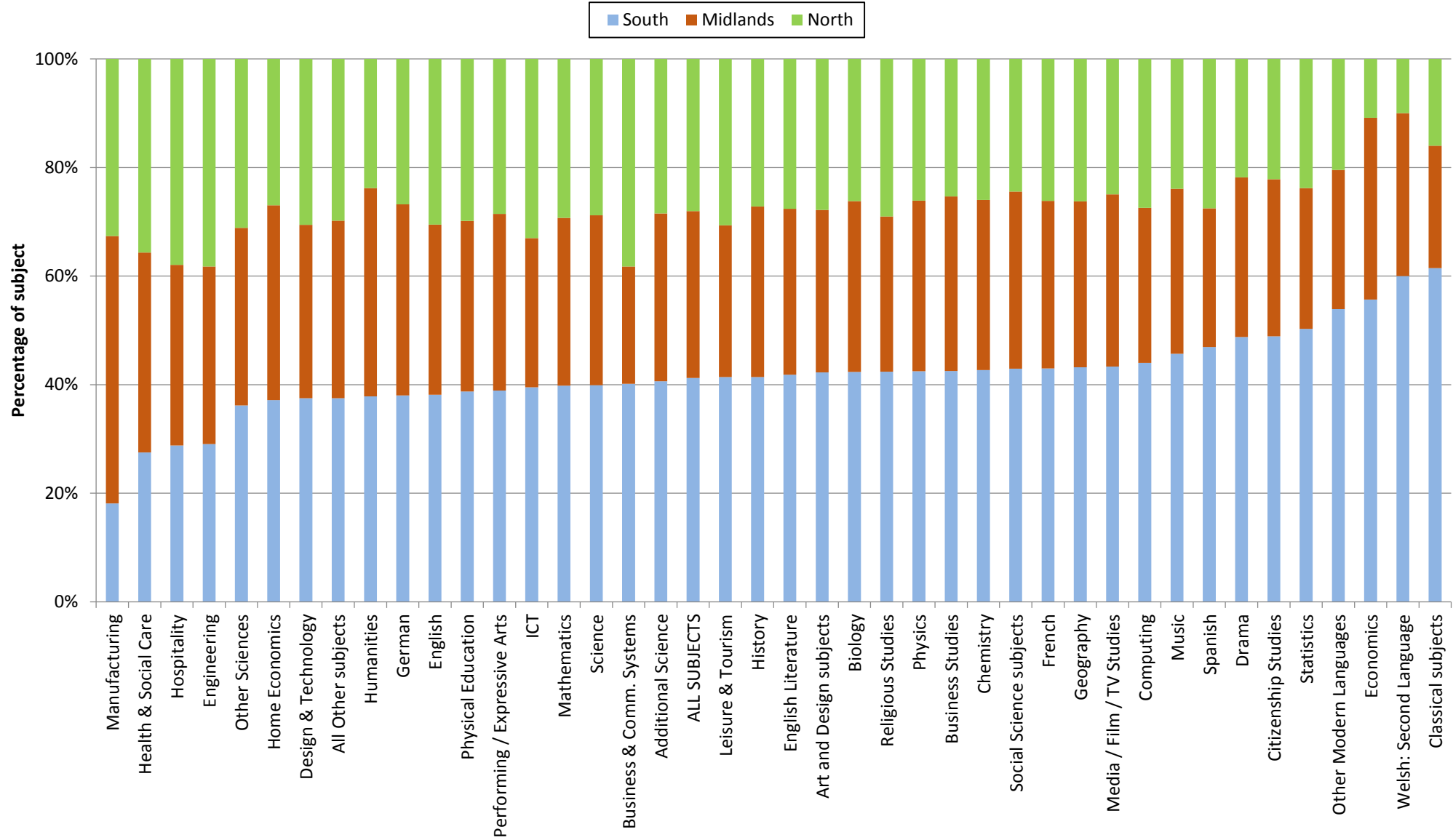
Year on year % changes to large entry subjects (over 100,000)

Increases		Decreases	
Additional Science	+14.31	English	-29.48
Physical Education	+7.70	Biology	-18.65
Religious Studies	+6.86	Science	-16.94
Art & Design	+4.54	Chemistry	-16.77
Geography	+1.03	Physics	-14.63

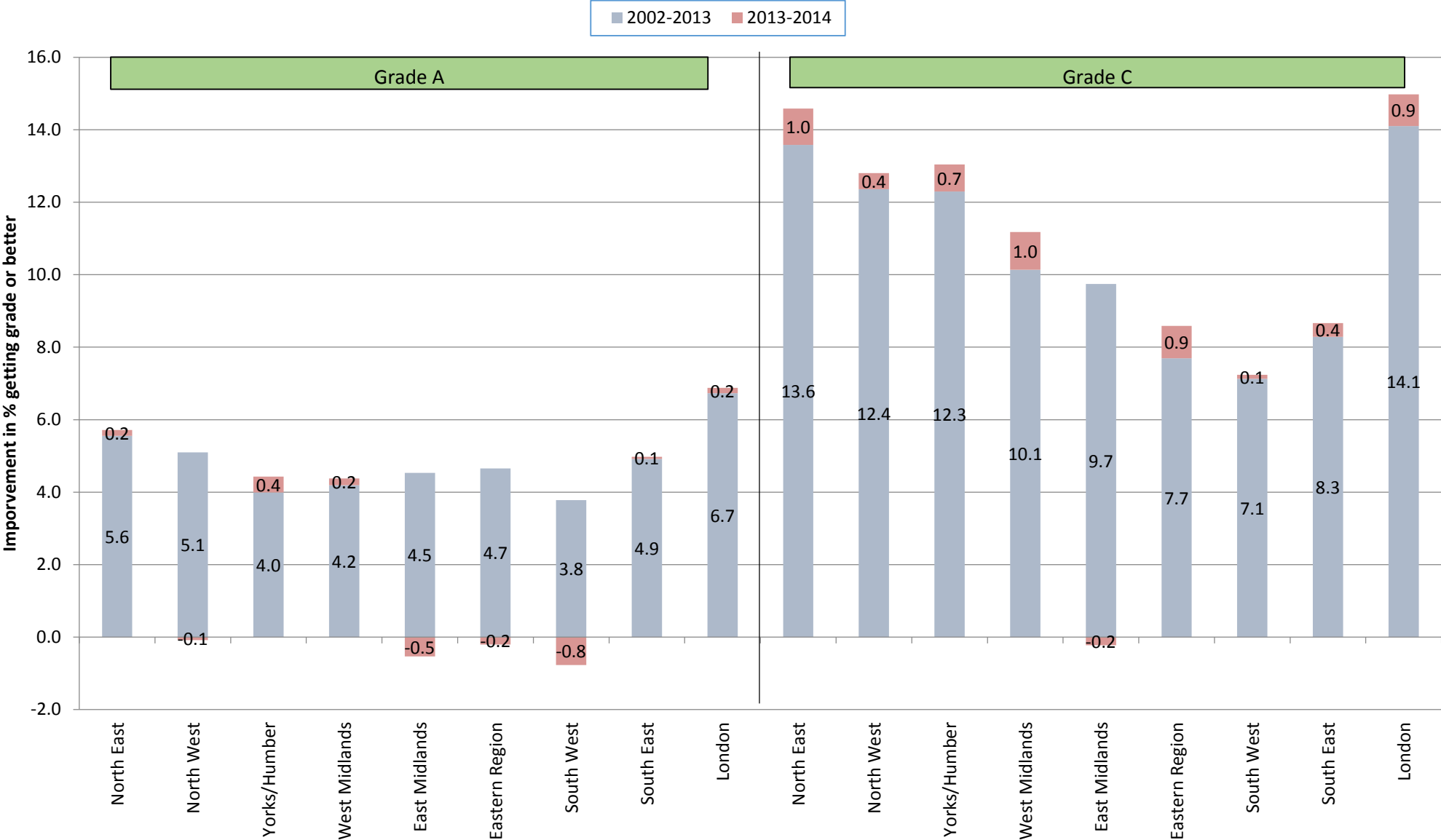
Differences between Boys and Girls' GCSE subject choices



Differences in GCSE subject choices by major region



Improvements at Grades A and C, 2002 to 2014, by English Region

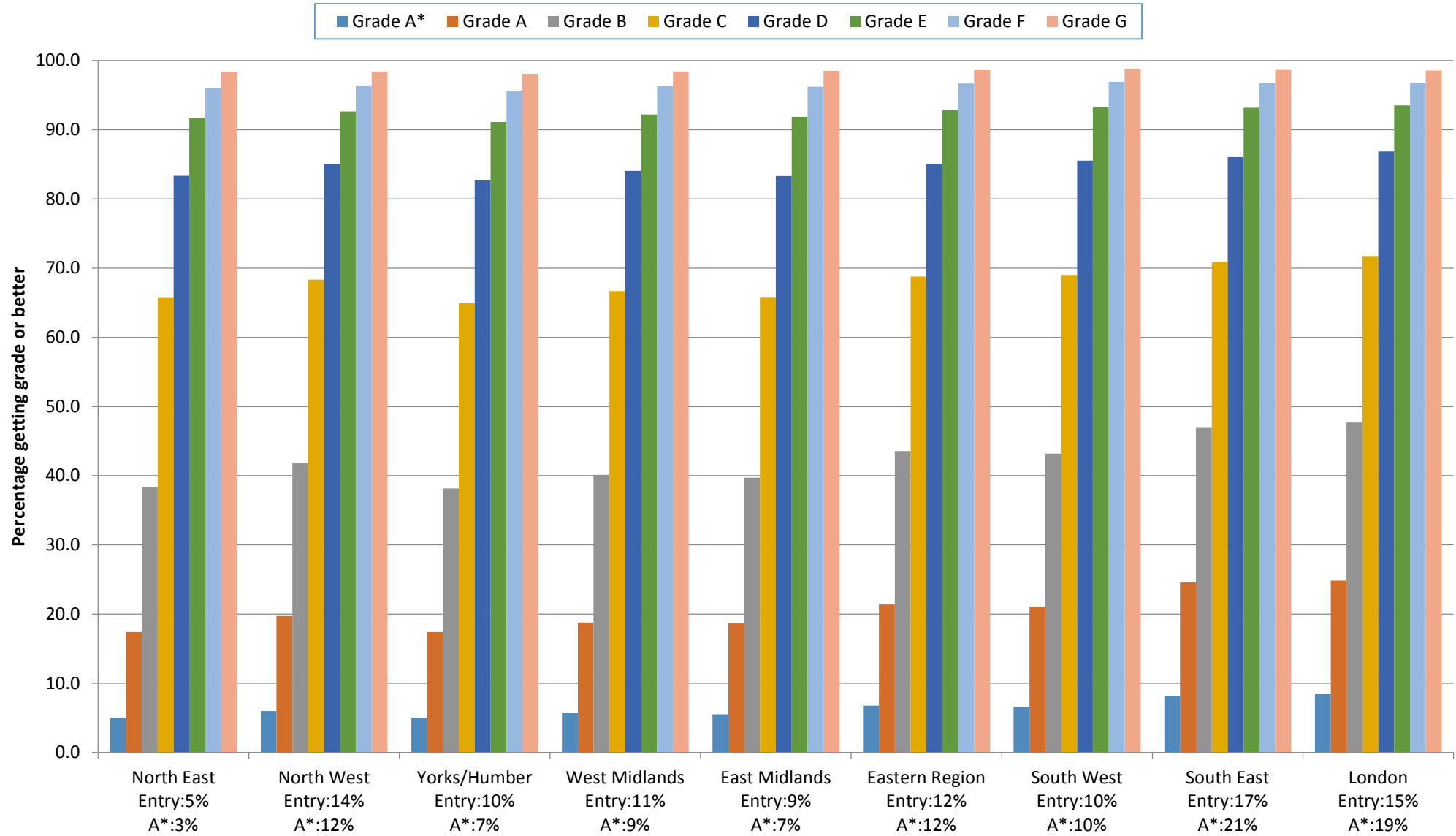


Improvements at Grade A and C, 2002 to 2014 by region (table)

Grade A*-A					
Region	Cum. % at Grade			Change	
	2002	2013	2014	2002-13	2013-14
North East	11.7	17.3	17.4	5.6	0.2
North West	14.7	19.8	19.8	5.1	-0.1
Yorks/Humber	13.0	17.0	17.4	4.0	0.4
West Midlands	14.4	18.6	18.8	4.2	0.2
East Midlands	14.7	19.2	18.7	4.5	-0.5
Eastern Region	17.0	21.6	21.4	4.7	-0.2
South West	18.1	21.9	21.1	3.8	-0.8
South East	19.6	24.5	24.6	4.9	0.1
London	18.0	24.7	24.8	6.7	0.2
Wales	17.0	19.0	19.4	2.0	0.4
Northern Ireland	21.0	28.0	28.2	6.9	0.3
Other UK	24.9	27.4	26.2	2.5	-1.2
All UK	16.4	21.3	21.3	4.9	0.0

Grade A*-C					
Region	Cum. % at Grade			Change	
	2002	2013	2014	2002-13	2013-14
North East	51.1	64.7	65.7	13.6	1.0
North West	55.5	67.9	68.3	12.4	0.4
Yorks/Humber	51.9	64.2	64.9	12.3	0.7
West Midlands	55.5	65.6	66.7	10.1	1.0
East Midlands	56.2	66.0	65.7	9.7	-0.2
Eastern Region	60.2	67.9	68.8	7.7	0.9
South West	61.8	68.9	69.0	7.1	0.1
South East	62.3	70.5	70.9	8.3	0.4
London	56.8	70.9	71.7	14.1	0.9
Wales	59.7	65.4	66.6	5.7	1.2
Northern Ireland	68.4	76.5	78.0	8.2	1.4
Other UK	71.6	71.8	74.0	0.2	2.2
All UK	57.9	68.1	68.8	10.2	0.7

2014 GCSE results by English region



Note: Entry denotes proportion of total national entry. A* denotes proportion of national A* achieved.