

TABLES - AS, A-level and AEA Trends 2009
GCE A-level trends
Table 1 Top GCE A-level subjects

Subject (2008 ranking in brackets)			2009	
			% of total	Number of candidates
1	(1)	English	10.84	91815
2	(2)	Mathematics	8.56	72475
3	(3)	Biology	6.55	55485
4	(5)	Psychology	6.24	52872
5	(4)	General Studies	5.90	50012
6	(6)	History	5.79	49071
7	(7)	Art & Design Subjects	5.41	45839
8	(8)	Chemistry	5.02	42491
9	(9)	Media/Film/TV Studies	3.99	33822
10	(10)	Geography	3.80	32227

Table 2 Top GCE A-level subject increases

Subject (2008 ranking in brackets)		Changes from 2008-2009			
		% change	2008 Number of candidates	2009 Number of candidates	
1		Irish	36.69	248	339
2	(2)	Mathematics (Further)	15.20	9091	10473
3	(6)	Economics	13.20	18540	20987
4	(5)	Mathematics	12.20	64593	72475
5		Political Studies	7.77	12426	13392
6	(4)	Other Modern Languages	7.52	7377	7932
7		Communication Studies	5.09	2063	2168
8		Law	4.93	15523	16288
9		Physics	4.77	28096	29436
10	(7)	Religious Studies	4.69	20134	21079

N.B Irish had the largest, Communication Studies the fifth largest and Law the tenth largest reported decreases in 2008.

Table 3 GCE A-level subject decreases

Subject (2008 ranking in brackets)		Changes from 2008-2009			
		% Change	2008 Number of candidates	2009 Number of candidates	
1	(6)	General Studies	-8.87	54879	50012
2	(8)	German	-7.69	6245	5765
3	(2)	Computing	-7.06	5068	4710
4		French	-3.71	14885	14333
5		Sport / PE Studies	-2.99	22340	21672
6	(3)	Information and Communication Technology	-2.68	12277	11948
7		Music	-2.32	10673	10425
8		Critical Thinking	-1.50	2529	2491
9		Science subjects	-1.30	4555	4496
10	(4)	Performing / Expressive Arts	-1.02	3628	3591

N.B Critical Thinking had the largest reported increases in 2008 and 2007.

GCE AS trends

Table 4A Top GCE AS subjects (legacy(old) and new specifications combined)

Subject (2008 ranking in brackets)			2009	
			% of total	Number of candidates
1	(1)	English	9.10	107124
2	(3)	Mathematics*	8.78	103312
3	(4)	Psychology	6.93	81587
4	(5)	Biology	6.72	79112
5	(2)	General Studies	6.57	77350
6	(6)	Art & Design subjects	5.20	61282
7	(8)	Chemistry	4.97	58473
8	(7)	History	4.93	58020
9	(9)	Media / Film / TV Studies	3.98	46872
10	(10)	Business Studies	3.70	43594

Note: *There is no new AS specification in Mathematics in 2009.

Table 4B Top GCE AS subjects (new specifications only)

Subject		2009 Provisional	
		% of total	Number of candidates
1	English	9.17	93821
2	Psychology	7.17	73390
3	Biology	6.53	66876
4	General Studies	5.61	57383
5	Art & Design subjects	5.52	56506
6	History	4.80	49173
7	Chemistry	4.73	48430
8	Media / Film / TV Studies	4.28	43785
9	Sociology	3.77	38540
10	Business Studies	3.64	37277

Table 5 Top GCE AS subject increases

Subject (2008 ranking in brackets)			Changes from 2008-2009		
			% change	2008 Number of candidates	2009 Number of candidates
1	(1)	Mathematics (Further)	47.17	8945	13164
2	(4)	Irish	26.72	378	479
3	(5)	Mathematics	22.10	84613	103312
4	(3)	Economics	13.35	24449	27714
5		Physics	10.03	38129	41955
6		Biology	9.51	72239	79112
7		Technology subjects	9.44	22953	25120
8		Classical subjects	9.28	6994	7643
9		Chemistry	7.97	54157	58473
10	(8)	Political Studies	5.64	15618	16499

N.B. Classical Subjects had the ninth largest reported decrease in 2008 and also in 2007.

Table 6 Top GCE AS subject decreases

Subject (2008 ranking in brackets)		Changes from 2008-2009		
		% change	2008 Number of candidates	2009 Number of candidates
1	Science subjects	-27.10	9529	6947
2 (4)	General Studies	-7.99	84071	77350
3	Communication Studies	-4.17	3553	3405
4 (1)	Computing	-3.29	7821	7564
5 (6)	Critical Thinking	-3.12	22560	21856
6	Law	-3.09	25353	24569
7 (8)	Music	-2.95	14049	13635
8 (2)	German	-1.57	7533	7415
9 (3)	French	-0.23	19167	19122

N.B. Communication Studies had the second largest and Law the sixth largest reported increases in 2008.

Applied GCE trends

Table 7 Top Applied GCE A-level double award subjects (out of a total of 7 subjects)

Subject (2008 ranking in brackets)		2009	
		% of total	Number of candidates
1 (1)	Health & Social Care	41.04	4755
2 (2)	Applied Business	24.62	2852
3 (3)	Applied ICT	15.84	1835

Table 8 Top Applied GCE A-level double award increases and decreases

Given the number of subjects and the size of the entries, the only change to report is an across the board continued decline in entry, with the Applied Science showing the smallest percentage reduction.

Table 9 Top Applied GCE A-level single award subjects (out of a total of 10 subjects)

Subject (2008 ranking in brackets)		2009	
		% of total	Number of candidates
1 (1)	Applied ICT	35.34	13580
2 (2)	Applied Business	23.48	9022
3 (3)	Health & Social Care	18.70	7184

Table 10 Top Applied GCE A-level single award increases and decreases

Given the number of subjects and the size of the entries, the only change to report is an overall increase in entry, with an increase of almost 20% for Applied Science. Applied ICT, Health & Social Care and Leisure have, however, had decreases in entry.

Table 11 Top Applied GCE AS double award subjects (out of a total of 7 subjects)

Subject (2008 ranking in brackets)		2009	
		% of total	Number of candidates
1 (1)	Health & Social Care	45.29	4810
2 (2)	Applied Business	20.13	2138
3 (3)	Applied ICT	15.55	1652

Table 12 Top Applied GCE AS double award increases and decreases

Given the number of subjects and the size of the entries, the only change to report is an across the board continued decrease in entry, with decreases of over 20% for Applied Business, Applied ICT, Leisure and Travel & Tourism.

Table 13 Top Applied GCE AS single award subjects (out of a total of 10 subjects)

Subject (2008 ranking in brackets)			2009	
			% of total	Number of candidates
1	(1)	Applied ICT	35.04	18328
2	(2)	Applied Business	21.16	11068
3	(3)	Health & Social Care	18.42	9633

Table 14 Top Applied GCE AS single award increases and decreases

The entry for eight of the Applied GCE AS single award subjects shows a decrease from 2008. Applied Science and Applied Performing Arts, however, show increases of 25.09% and 5.12% respectively.

AEA trends

AEA Irish and Welsh have not been included in this exercise since their entries are significantly lower than those of the other AEA specifications.

Table 15 Top AEA subjects

Subject (2008 ranking in brackets)			2009	
			% of total	Number of candidates
1	(1)	English	25.77	2350
2	(2)	Mathematics	16.41	1496
3	(3)	History	10.07	918
4	(4)	Chemistry	8.47	772
5	(6)	Physics	6.77	617
6	(5)	Biology	6.08	554

Table 16 AEA subject increases

Subject (2008 ranking in brackets)		Changes from 2008-2009		
		% change	2008 Number of candidates	2009 Number of candidates
1	Classical subjects	9.92	121	133
2	(1) Mathematics	1.63	1472	1496

Note: All other subjects showed a decrease in entry in this the final year of offering these qualifications. The AEA in Mathematics will, however, continue until a new A-level specification is introduced.

Table 17 Top AEA subject decreases

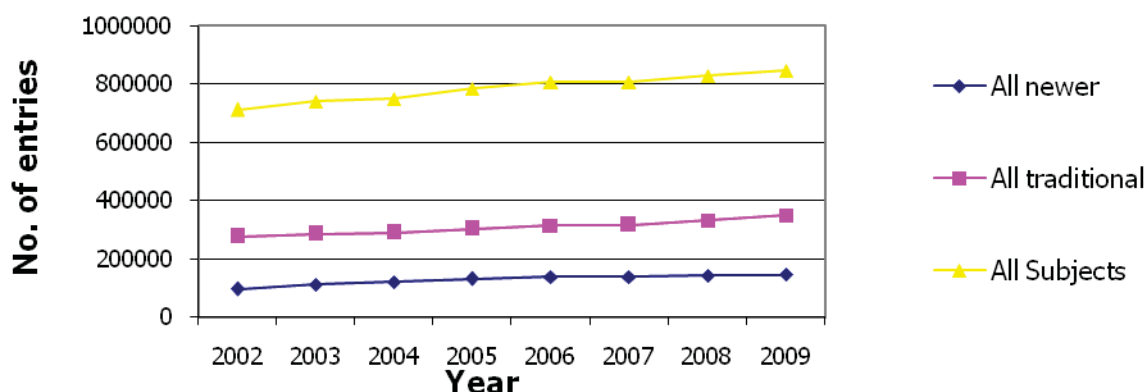
Subject (2008 ranking in brackets)		Changes from 2008-2009		
		% change	2008 Number of candidates	2009 Number of candidates
1	(1) Psychology	-48.99	594	303
2	(2) Critical Thinking	-47.52	202	106
3	Spanish	-28.70	223	159

GCE A-level Entry Trends – 2002 - 2009

All data are for the period for which the Curriculum 2000 GCE A-level specifications have been awarded.

Chart 1

Traditional vs. newer subjects - A level (2009)



The group of 'traditional' A-level subjects is:

Art & Design subjects, Classical subjects, Economics, English, Geography, History, Mathematics, Mathematics (Further) and Religious Studies

The group of 'newer' A-level subjects is:

Law, Media/Film/TV Studies, Political Studies, Psychology and Sociology

Chart 2

Entry trends - Top 10 entry subjects (2009)

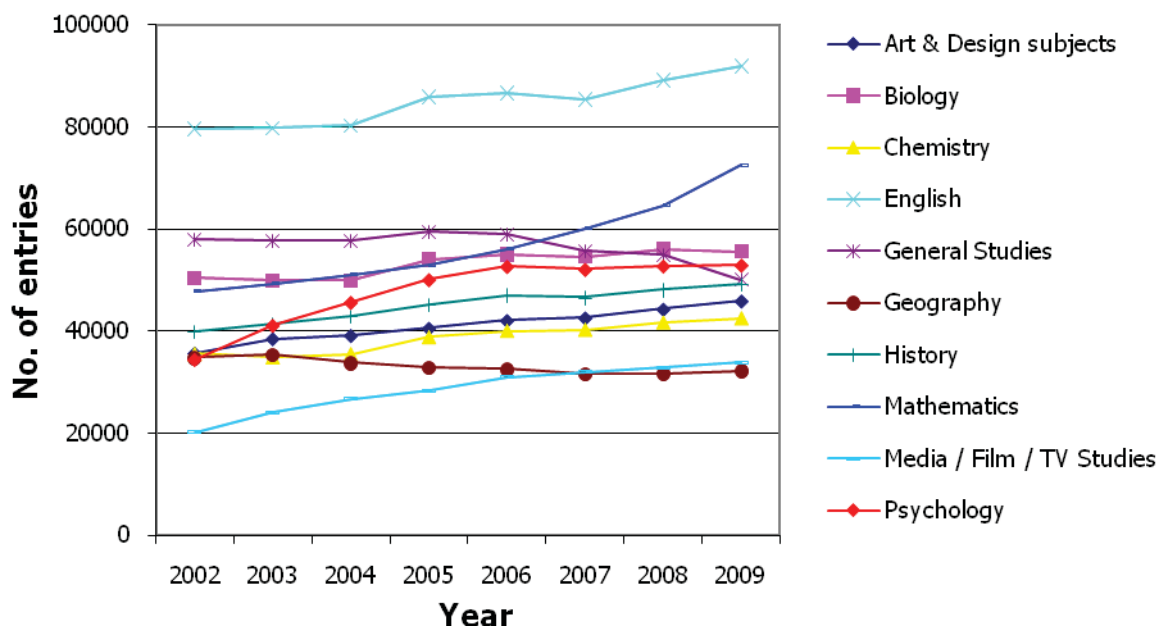


Chart 3

Entry trends - Top 10 increases (2009)

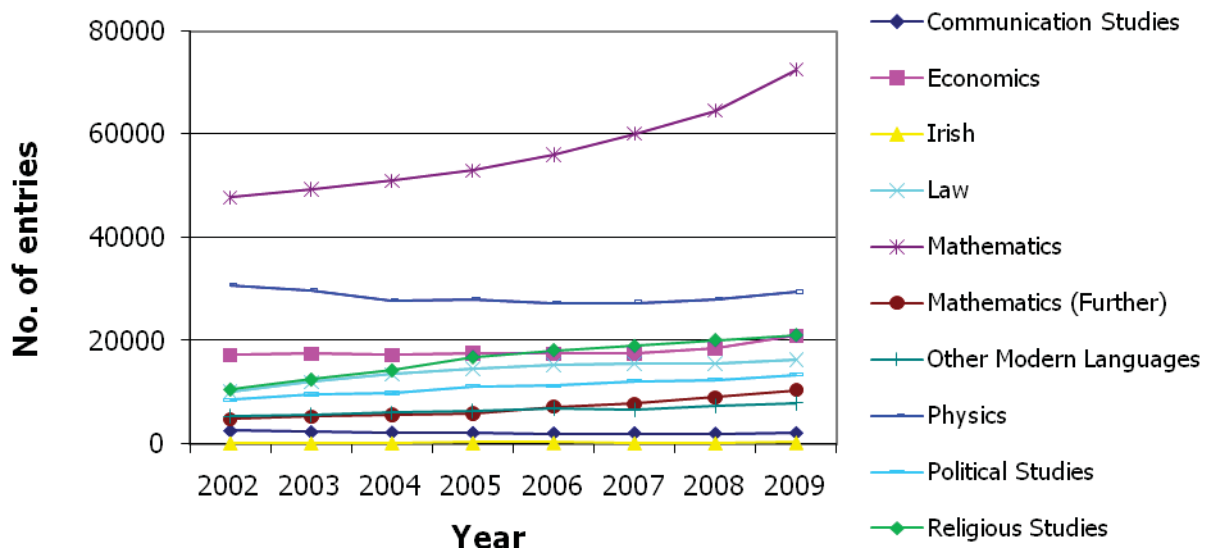


Chart 4

Entry trends - Top 10 decreases (2009)

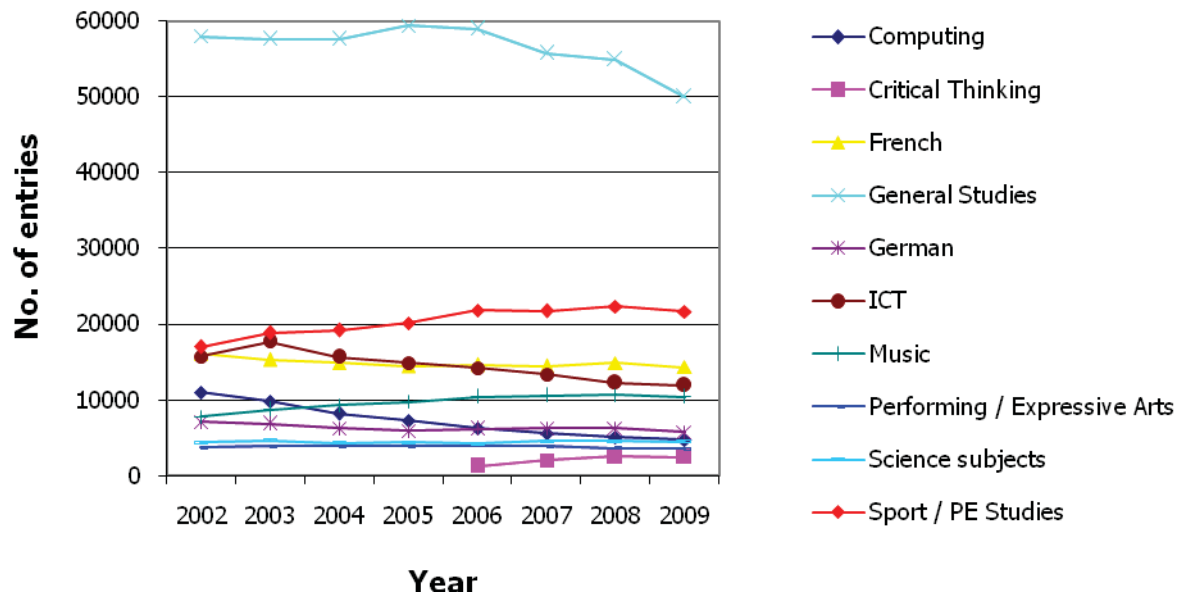


Chart 5

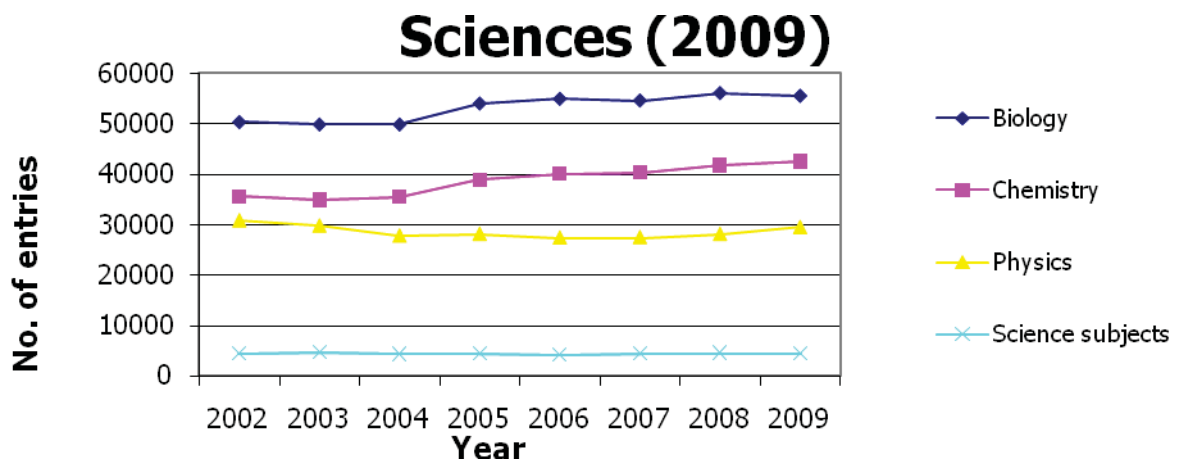
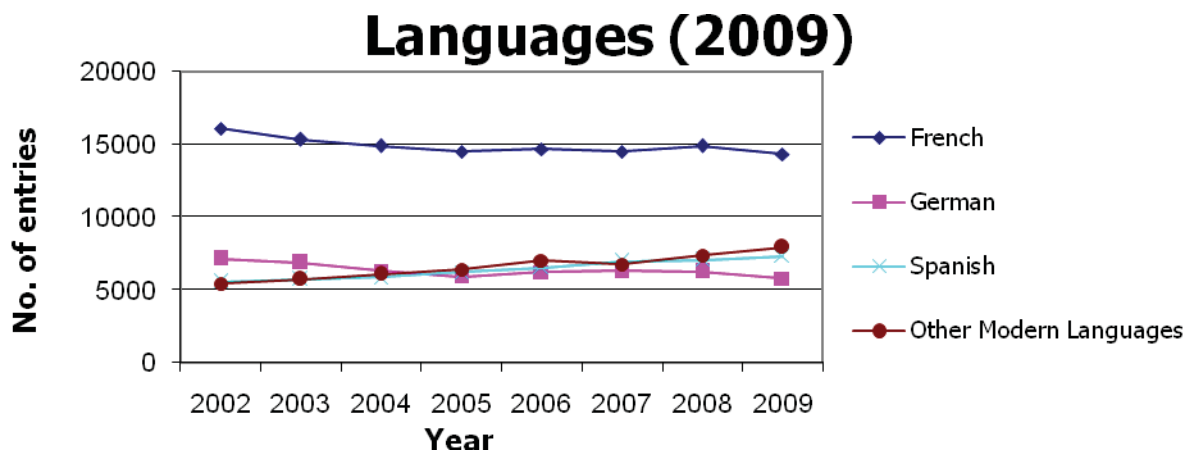


Chart 6

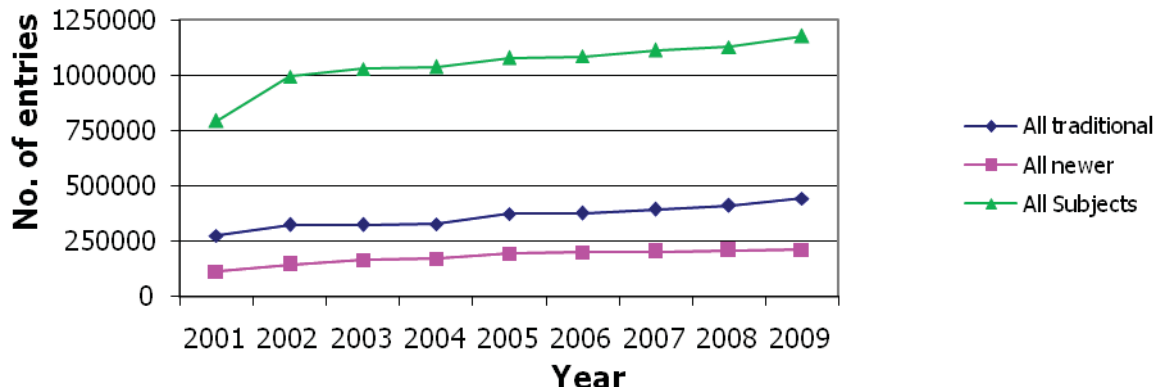


GCE AS Entry Trends – 2001 - 2009

All data are for the period for which the Curriculum 2000 GCE AS specifications have been awarded.

Chart 7

Traditional vs. newer subjects - AS (2009)



The group of 'traditional' AS subjects is:

Art & Design subjects, Classical subjects, Economics, English, Geography, History, Mathematics, Mathematics (Further) and Religious Studies

The group of 'newer' AS subjects is:

Law, Media/Film/TV Studies, Political Studies, Psychology and Sociology

Chart 8

Entry trends - Top entry AS subjects (2009)

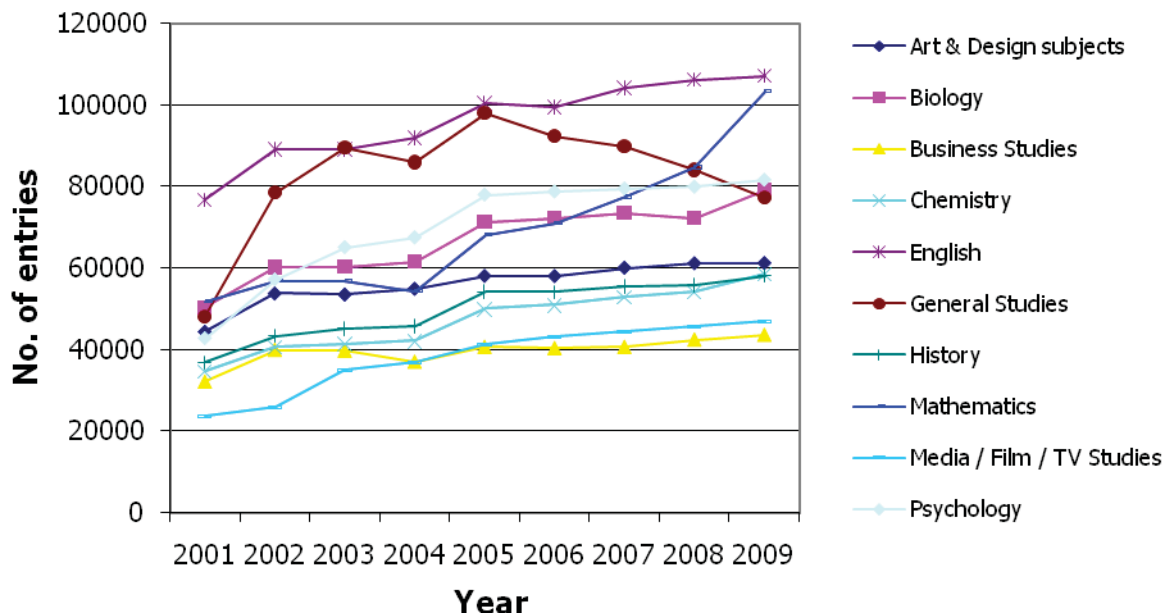


Chart 9

Entry trends - Top AS increases (2009)

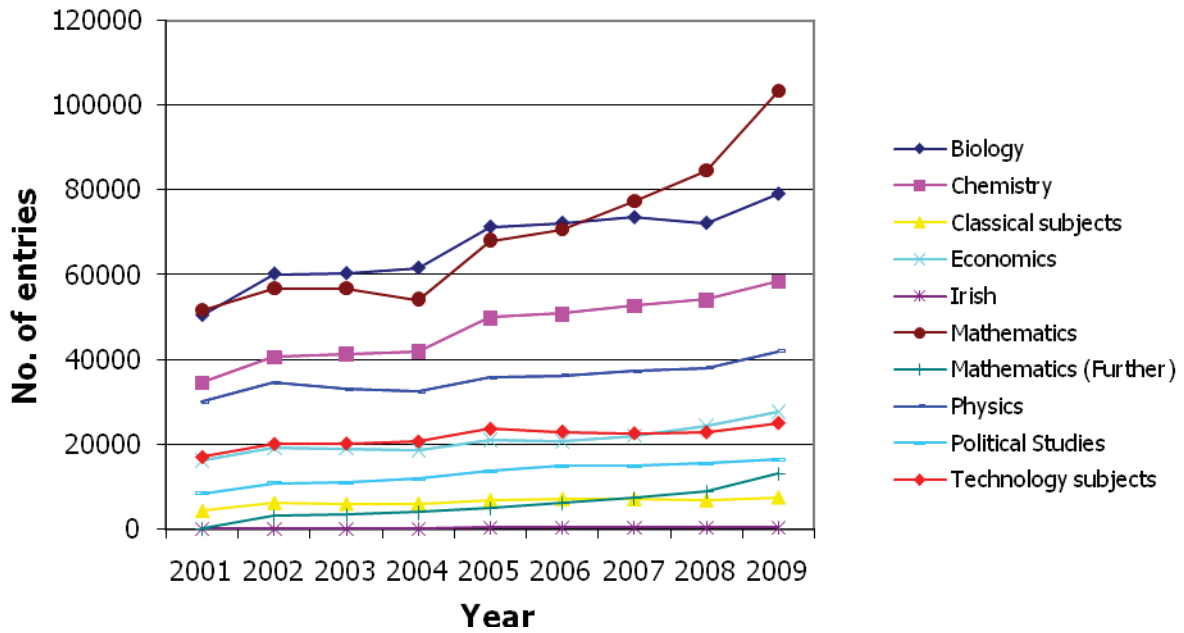


Chart 10

Entry trends - AS decreases (2009)

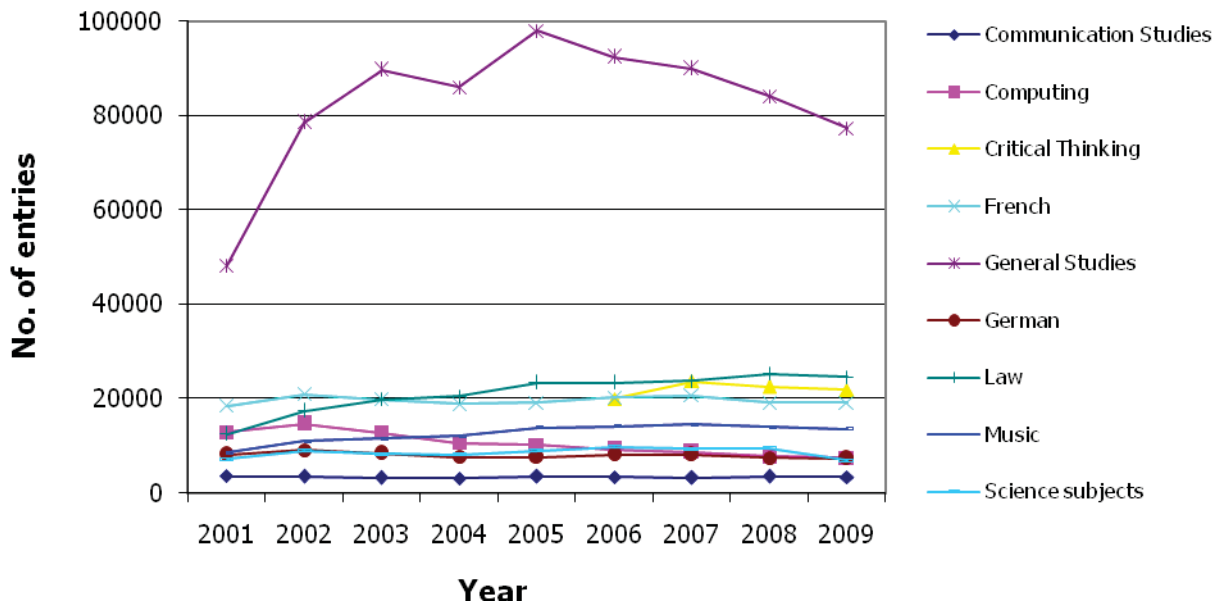


Chart 11

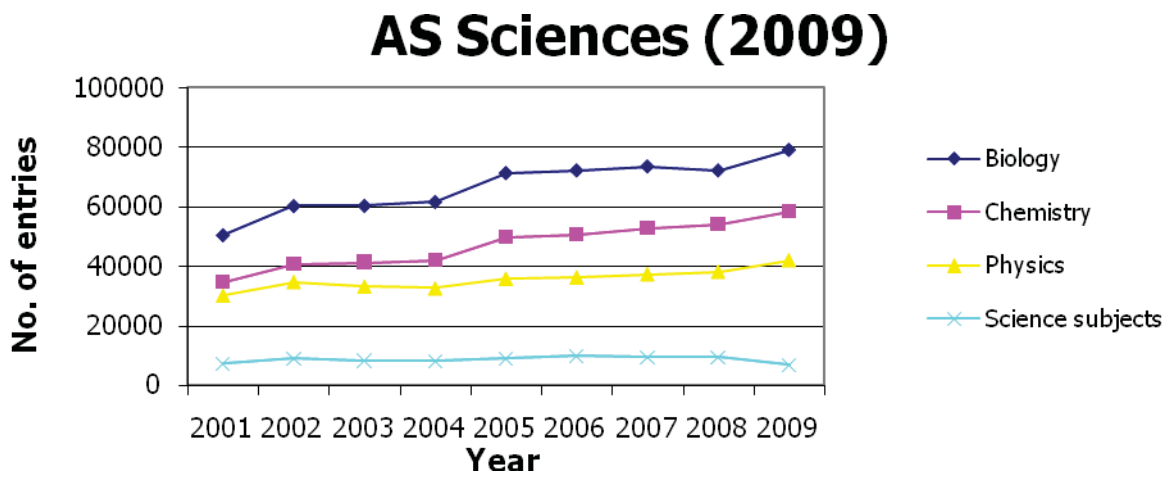
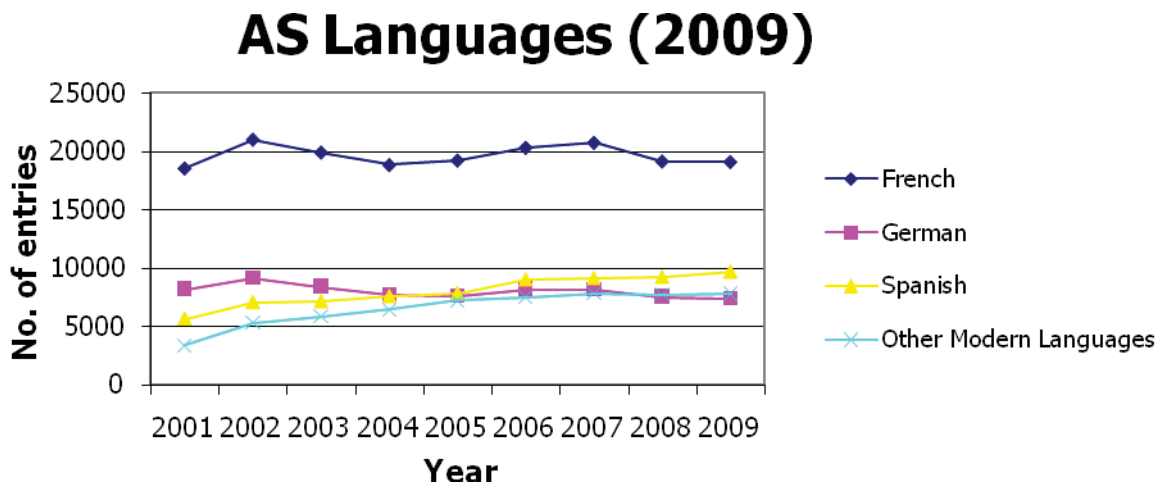


Chart 12



AEA Entry Trends – 2002 - 2009

Chart 13

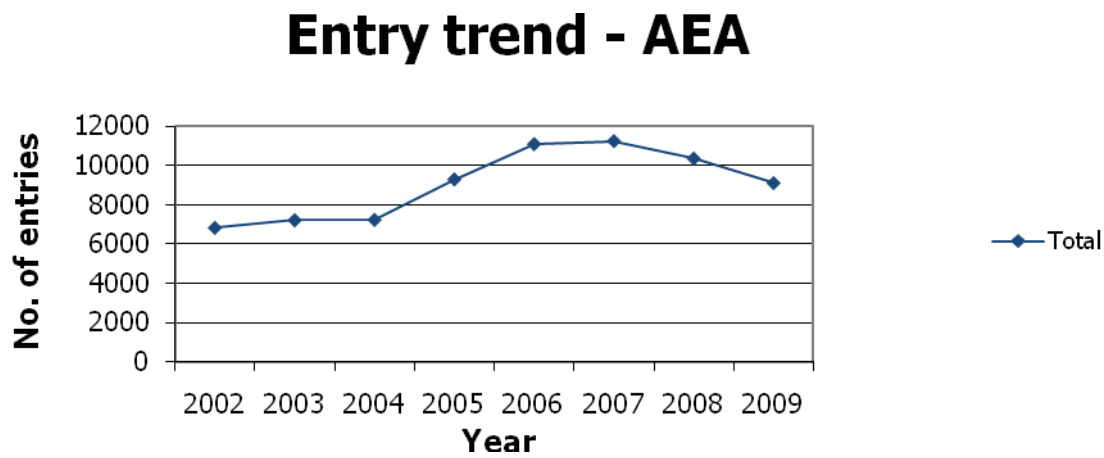


Chart 14

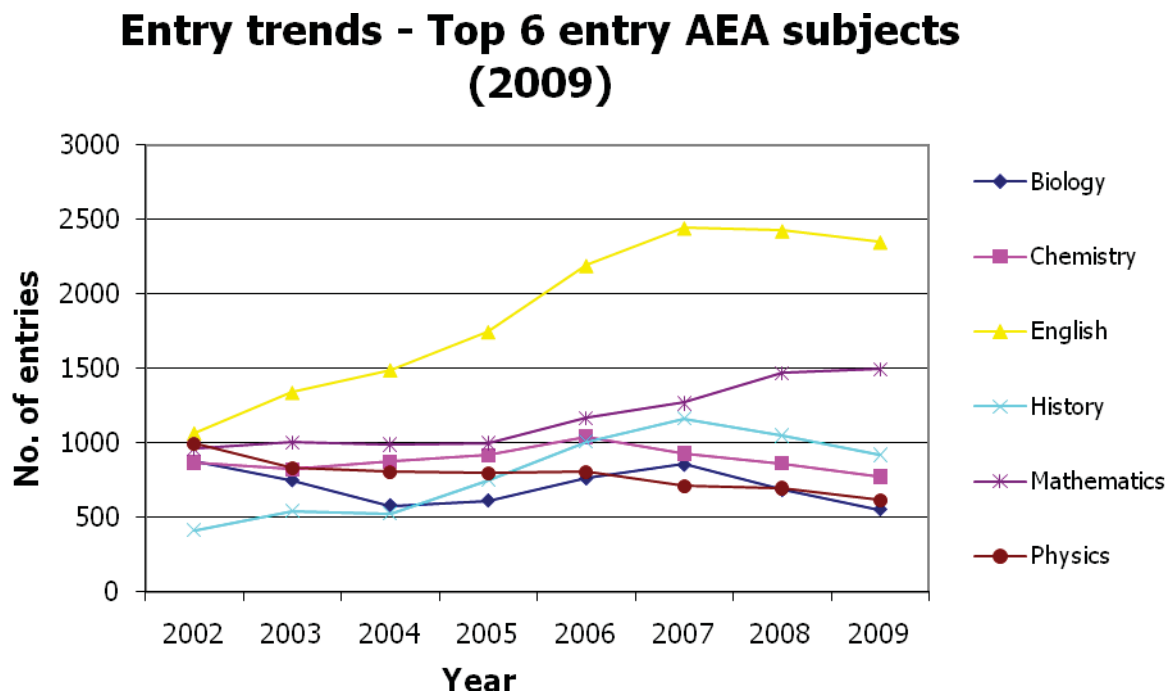


Chart 15

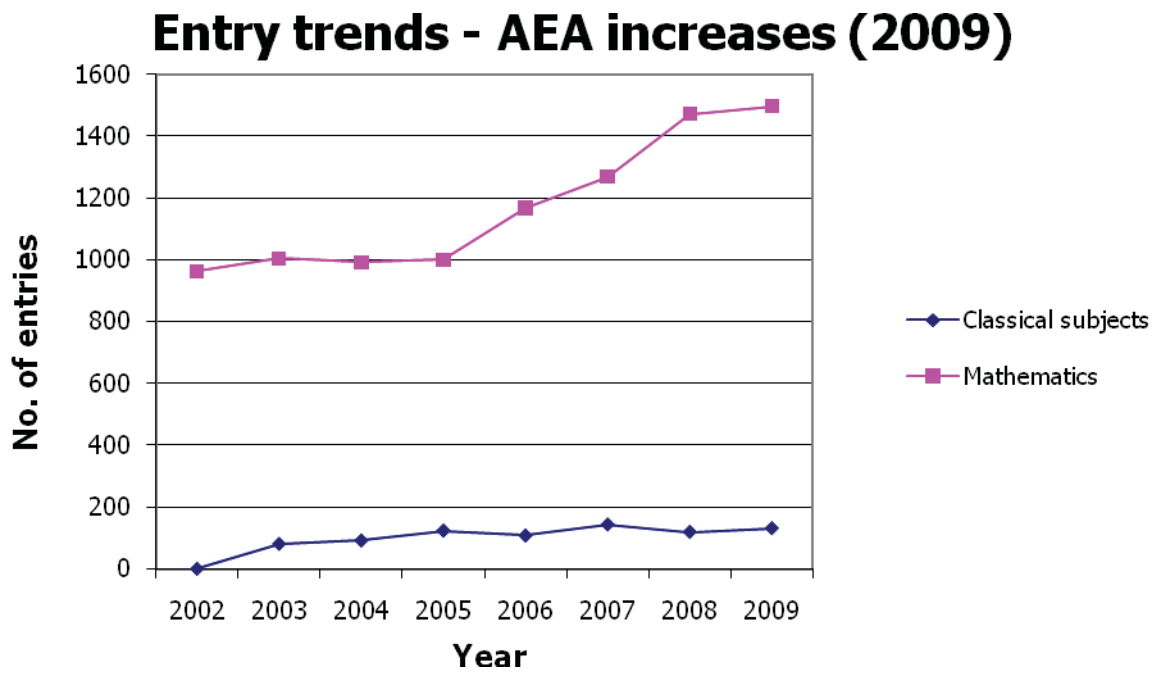


Chart 16

