

GCE A-level trends – Summer 2016

Table 1 Top GCE A-level subjects in 2016 by entry

Ranking	Subject	% of total	Number of candidates
1 (1)	Mathematics	11.0	92163
2 (2)	English	10.1	84710
3 (3)	Biology	7.5	62650
4 (4)	Psychology	7.1	59469
5 (5)	History	6.5	54731
6 (6)	Chemistry	6.2	51811
7 (7)	Art and Design Subjects	5.2	43242
8 (8)	Geography	4.3	36363
9 (9)	Physics	4.2	35344
10 (10)	Sociology	4.1	33980

(2015 ranking in brackets.)

Figure 1 Top ten A-level subjects as a percentage of the total entry over the period 2007 to 2016

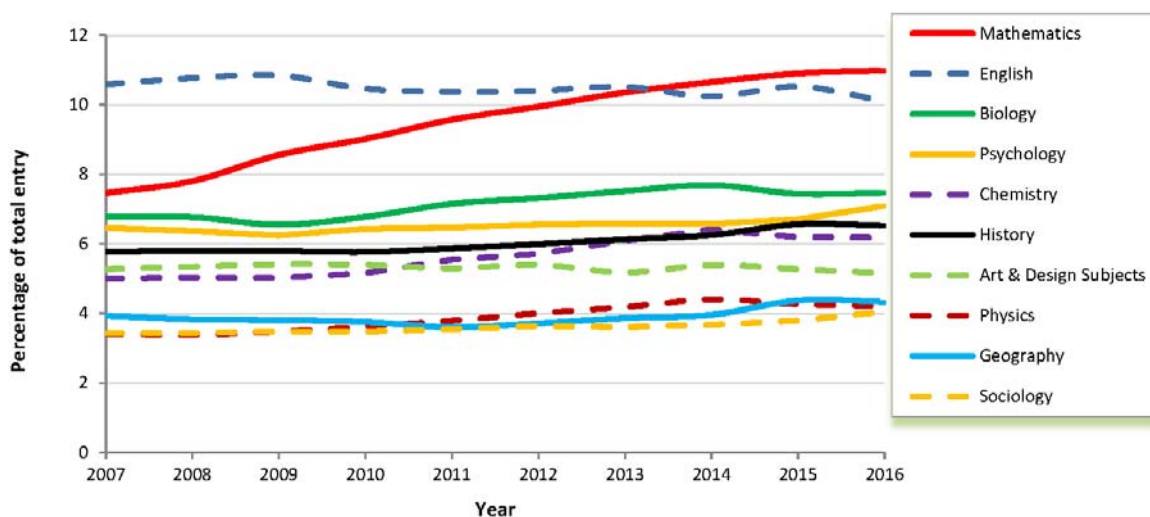


Table 2 Top GCE A-level subject increases (changes from 2015-2016)

Ranking	Subject	% change	2015 Number of candidates	2016 Number of candidates
1 (1)	Computing	16.0	5383	6242
2	Economics	6.6	27575	29385
3 (8)	Sociology	5.3	32258	33980
4	Law	5.0	10738	11272
5 (7)	Religious Studies	4.9	25773	27032
6	Psychology	4.3	57014	59469
7	Business Studies	3.1	27362	28208
8 (4)	Political Studies	2.9	15103	15540
9 (6)	Mathematics (Further)	1.8	14993	15257

(2015 ranking in brackets. Subjects over 5000 candidates shown. Subjects having a year-on-year decrease in 2015 are shown as blank.)

Figure 2 Top GCE A-level subject increases, 2016

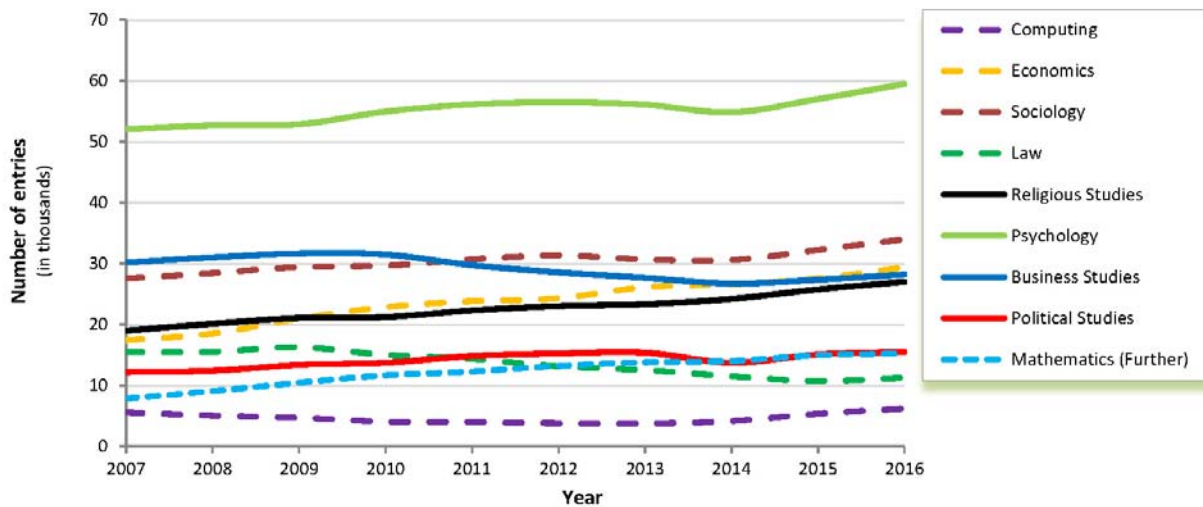


Table 3 GCE A-level subject decreases (changes from 2015-2016)

Ranking	Subject	% change	2015 Number of candidates	2016 Number of candidates
1 (1)	General Studies	-35.0	18092	11759
2	Performing / Expressive Arts	-15.3	2573	2179
3 (2)	Music	-8.8	7776	7089
4 (8)	All Other Subjects	-6.6	11715	10948
5	Drama	-6.5	13226	12373
6	French	-6.5	10328	9672
7 (7)	Physical Education	-6.3	12405	11627
8 (6)	Design and Technology	-5.8	13240	12477
9	English	-5.4	89499	84710
10	Other Sciences	-5.1	3481	3304

(2015 ranking in brackets. Subjects over 1000 candidates shown. Subjects having a year-on-year increase in 2015 are shown as blank.)

Figure 3 Top GCE A-level subject decreases, 2016

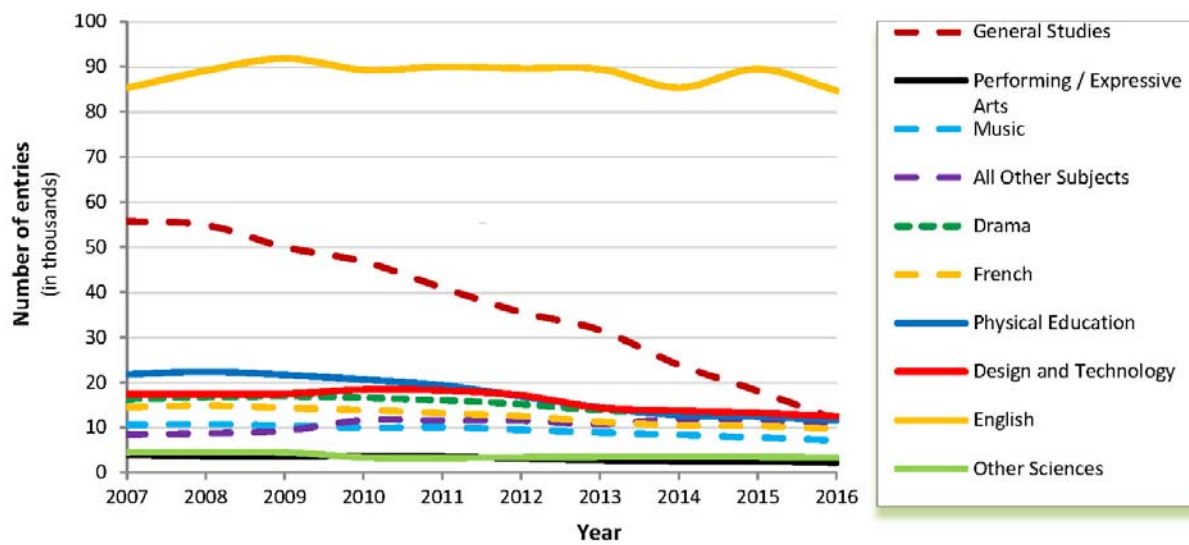


Figure 4 GCE A-level sciences, 2007-2016

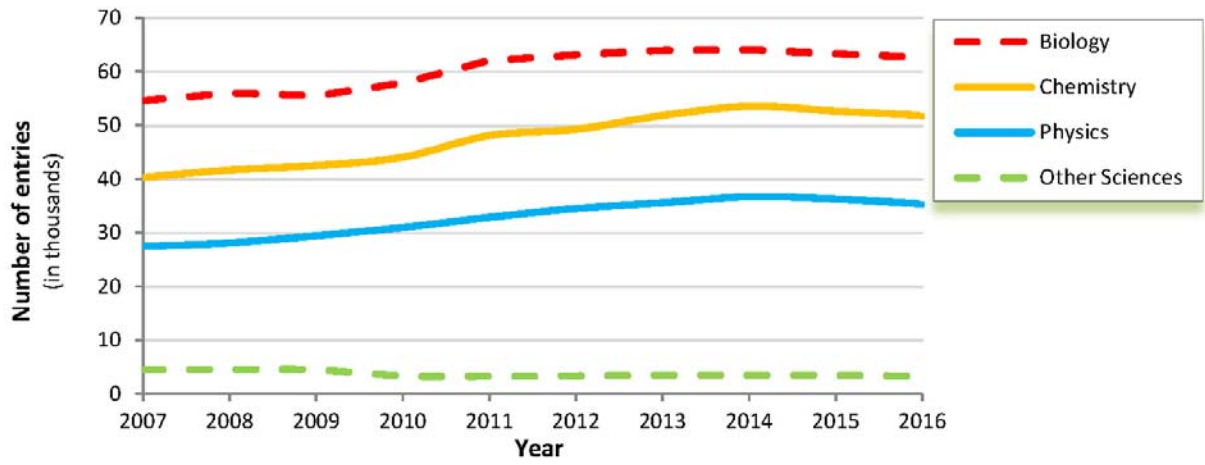
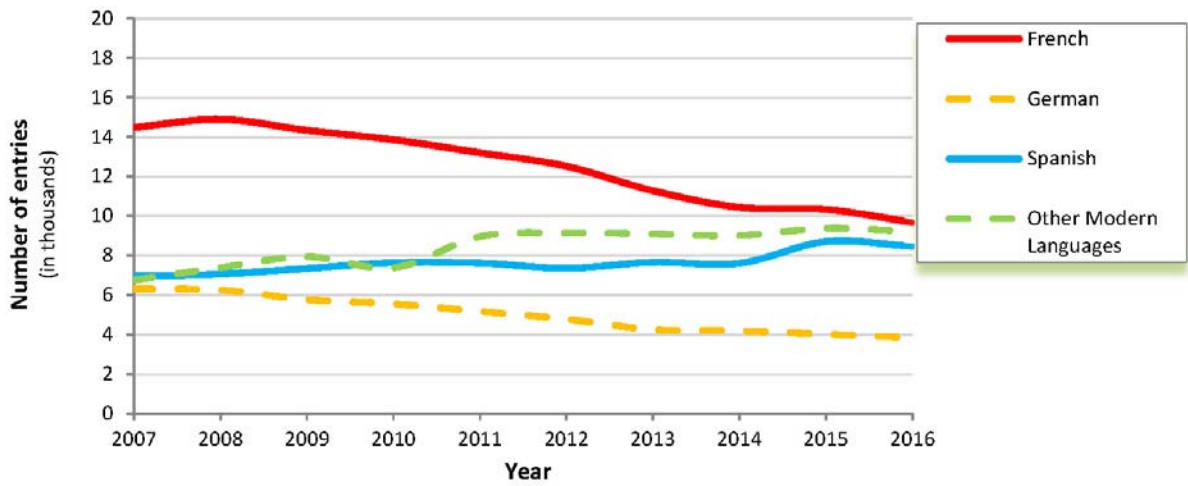


Figure 5 GCE A-level languages, 2007-2016



GCE AS trends

Table 4 Top GCE AS subjects in 2016

Ranking	Subject	% of total	Number of candidates
1 (1)	Mathematics	13.6	162741
2 (2)	English	8.0	95538
3 (3)	Biology	7.2	86506
4 (4)	Psychology	7.0	83228
5 (5)	Chemistry	6.1	73414
6 (6)	History	5.1	61304
7 (10)	Geography	4.6	54866
8 (7)	Physics	4.6	54619
9 (9)	Sociology	4.1	49313
10 (11)	Business Studies	3.6	43087

(2015 ranking in brackets.)

Figure 6 Top ten AS subjects as a percentage of the total entry over the period 2007 to 2016

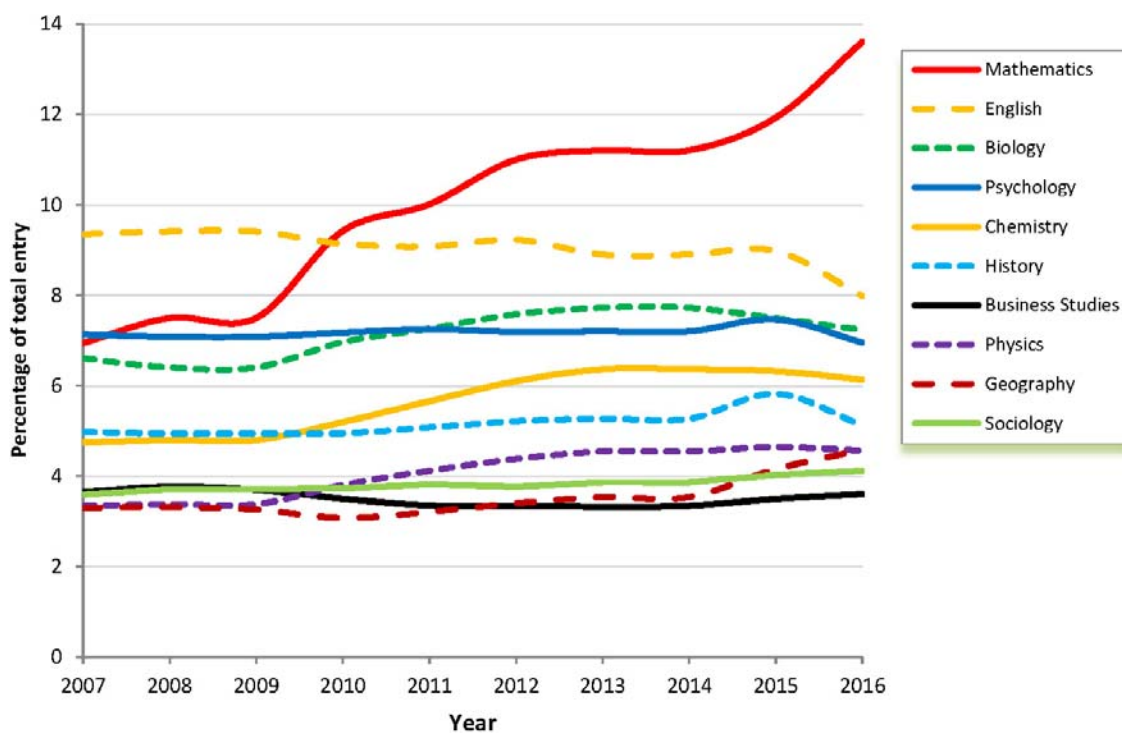


Table 5 GCE AS subject decreases (changes from 2015-2016)

Ranking	Subject	% change	2015 Number of candidates	2016 Number of candidates
1 (1)	Critical Thinking	-42.5	4766	2740
2 (14)	Art and Design Subjects	-33.4	62375	41545
3 (2)	General Studies	-29.9	33019	23141
4 (24)	History	-24.0	80694	61304
5 (15)	English	-23.2	124452	95538
6	Psychology	-19.6	103476	83228
7 (11)	Communication Studies	-17.7	3000	2470
8 (21)	Biology	-16.7	103859	86506
9 (22)	Chemistry	-16.2	87621	73414
10 (3)	Performing / Expressive Arts	-15.7	3580	3019

(2015 ranking in brackets. Subjects having a year-on-year increase in 2015 are shown as blank. Subjects with over 1000 entries shown.)

Figure 7 GCE AS subject decreases, 2016

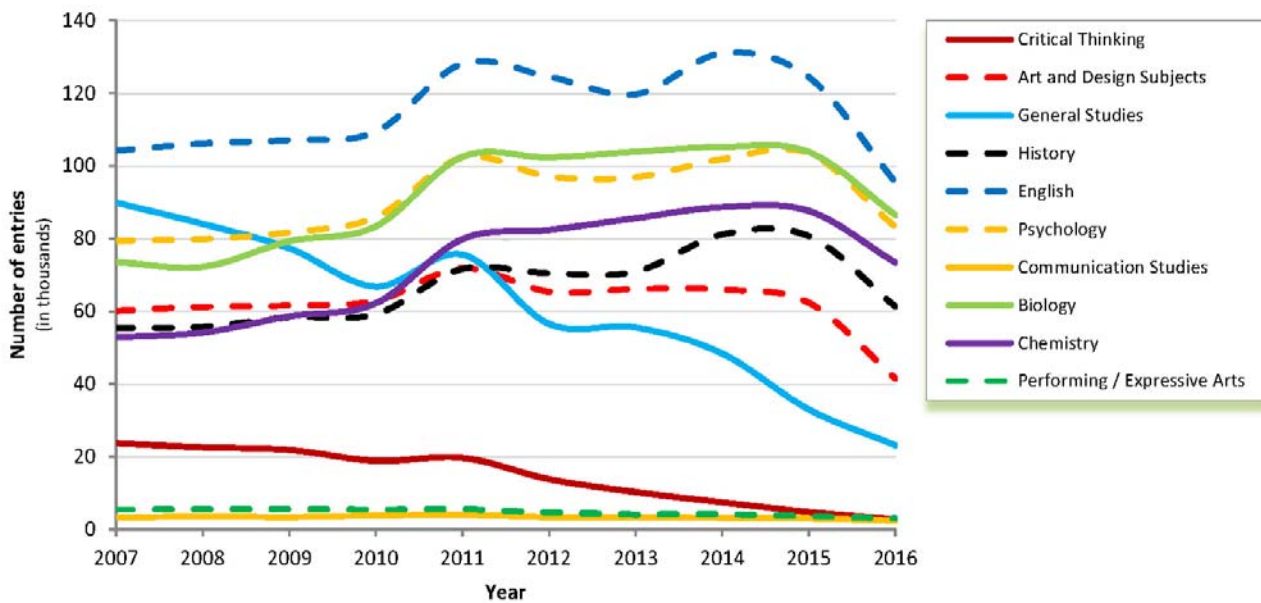


Figure 8 GCE AS sciences, 2007-2016

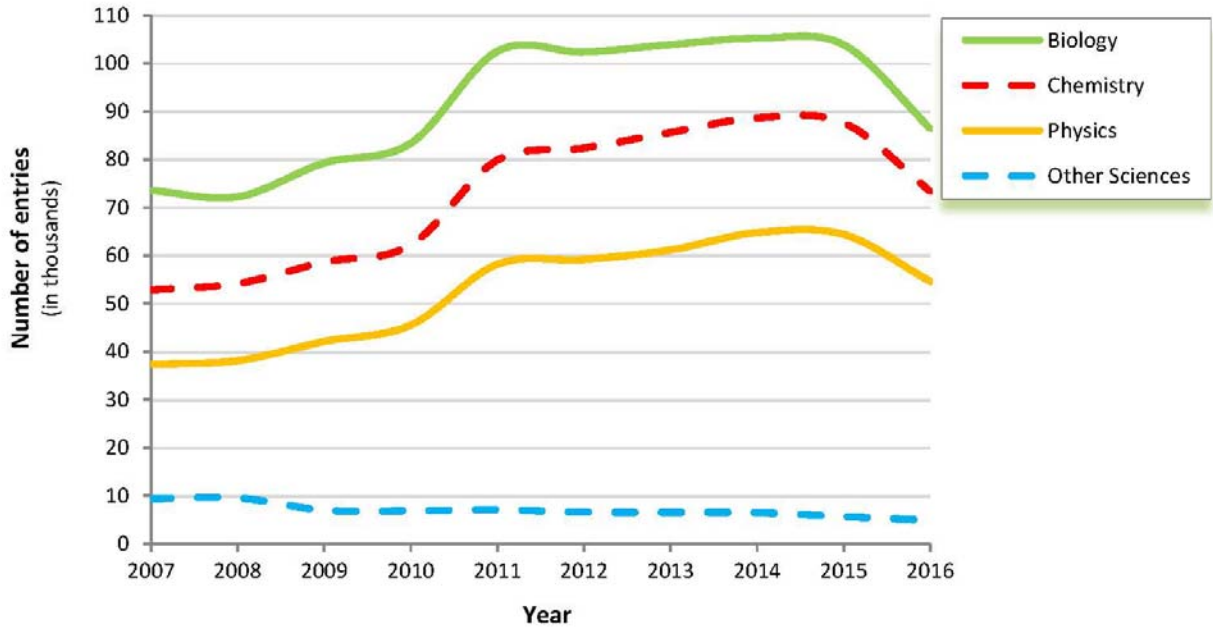
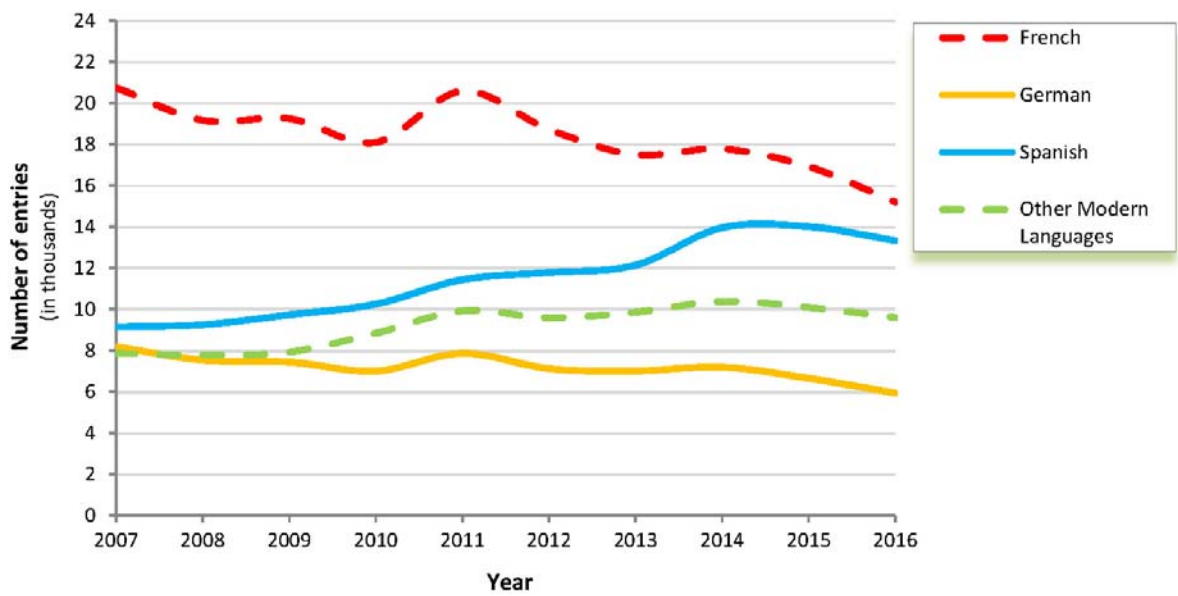


Figure 9 GCE AS languages, 2007-2016



Level 3 Extended Project trend

Table 6 Changes from 2015-2016

Subject	% change	2015 Number of candidates	2016 Number of candidates
Extended Project	6.1	33564	35608

AEA trend

Table 7 Changes from 2015-2016

Subject	% change	2015 Number of candidates	2016 Number of candidates
AEA Mathematics	-10.4	828	742