

TABLES – GCSE, Project and Entry Level Trends, 2013

GCSE Full Course trends

Chart 1 Total entry for GCSE full course subjects



Chart 2 Cohort Size

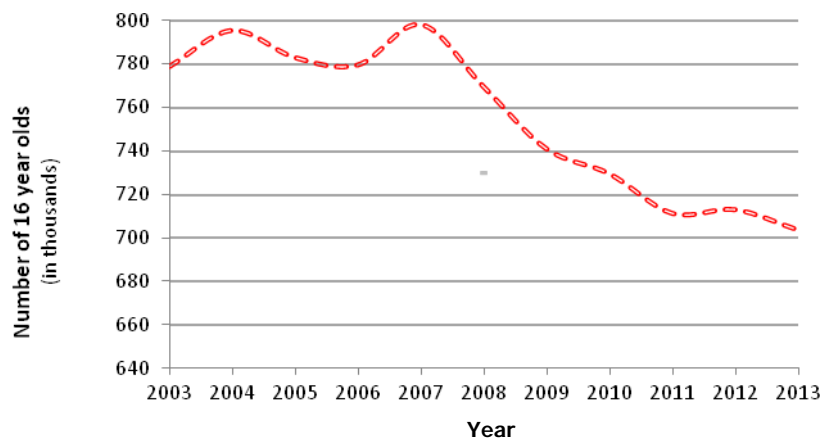


Table A Top ten GCSE full course subjects in 2013

Ranking	Subject	% of total	Number of candidates
1 (1)	Mathematics	13.96	760170
2 (2)	English	13.43	731153
3 (4)	English Literature	8.72	475031
4 (3)	Science	8.29	451433
5 (5)	Additional Science	5.20	283391
6 (7)	Religious Studies	4.85	263988
7 (8)	History	4.78	260236
8 (9)	Geography	4.09	222852
9 (6)	Design & Technology	4.04	219931
10 (10)	Art and Design subjects	3.36	183090

(2012 ranking in brackets)

Chart 3 Top ten GCSE full course subjects as a percentage of the total entry over the period 2002 to 2013

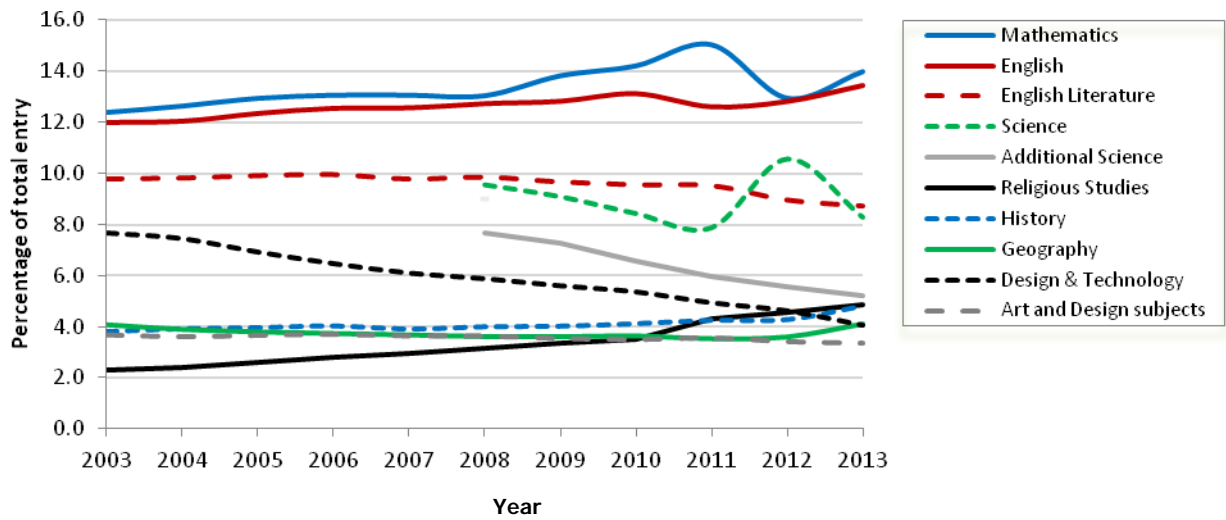


Table B Top GCSE full course subject increases (entry greater than 100,000) (Changes from 2012-2013)

Ranking	Subject	% change	2012 Number of candidates	2013 Number of candidates
1 (6)	Geography	19.16	187022	222852
2 (8)	History	16.71	222983	260236
3	French	15.55	153436	177288
4	Mathematics	12.49	675789	760170
5 (5)	Religious Studies	10.40	239123	263988
6 (7)	English	9.20	669534	731153
7 (2)	Biology	4.97	166168	174428
8 (3)	Chemistry	4.38	159126	166091
9	Physical Education	3.26	101580	104895
10	Art and Design subjects	2.34	178895	183090

(2012 ranking in brackets. Subjects having a year-on-year decrease in 2012 are shown as blank.)

Chart 4 Top GCSE full course subject increases, 2013 (entry greater than 100,000)

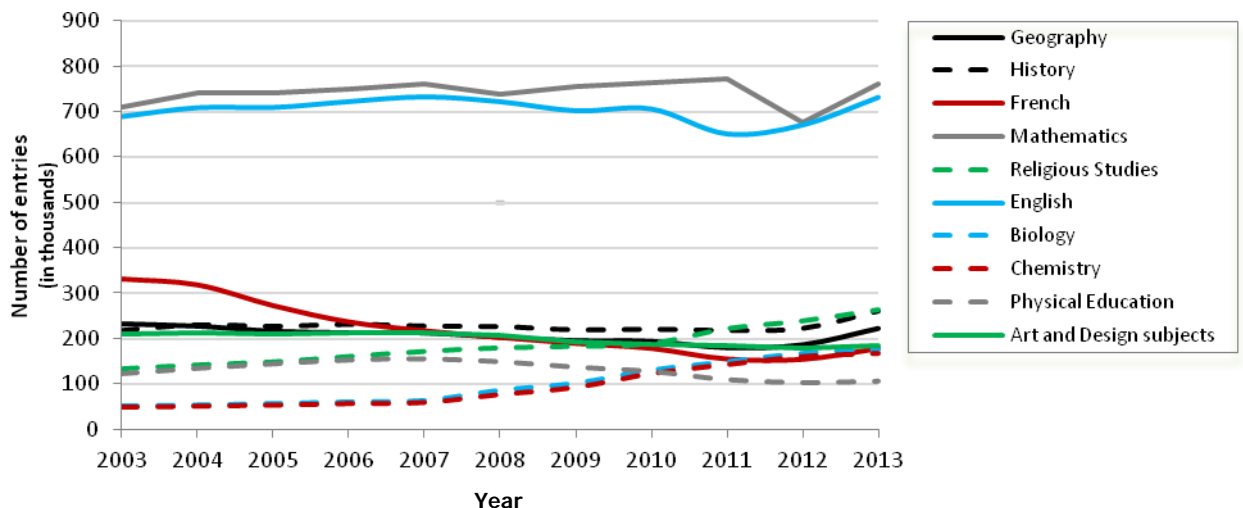


Table C Top GCSE full course subject increases (entry less than 100,000)
(Changes from 2012-2013)

Ranking	Subject	% change	2012 Number of candidates	2013 Number of candidates
1 (1)	Hospitality	64.16	1825	2996
2 (5)	ICT	38.14	53197	73487
3 (3)	Engineering	36.14	2128	2897
4	Health & Social Care	34.72	8177	11016
5 (6)	Spanish	25.77	72606	91315
6 (10)	Economics	23.90	3857	4779
7 (13)	Business Studies	10.88	70473	78141
8	Irish	10.70	1879	2080
9	German	9.36	57547	62932
10	Welsh: First Language	7.89	5224	5636

(2012 ranking in brackets. Subjects having a year-on-year decrease in 2012 are shown as blank.)

Chart 5 Top GCSE full course subject increases, 2013 (entry less than 100,000)

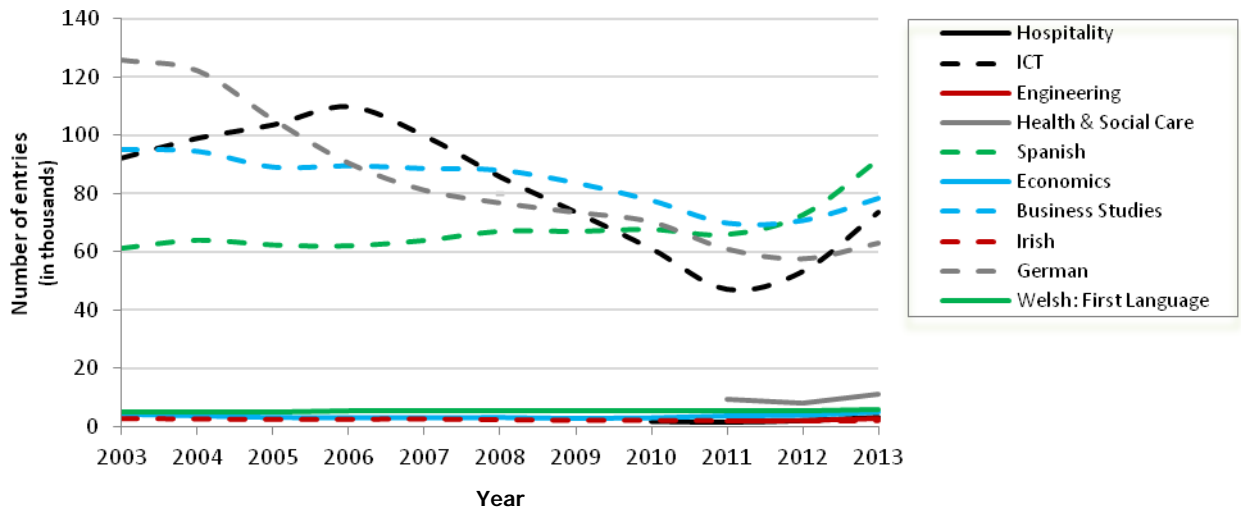


Table D GCSE full course subject decreases (entry greater than 100,000)
(Changes from 2012-2013)

Ranking	Subject	% change	2012 Number of candidates	2013 Number of candidates
1	Science	-18.29	552504	451433
2 (4)	Design & Technology	-8.63	240704	219931
3 (3)	Additional Science	-2.26	289950	283391

(2012 ranking in brackets. Subjects having a year-on-year increase in 2012 are shown as blank.)

Chart 6 Top GCSE full course subject decreases, 2013 (entry more than 100,000)

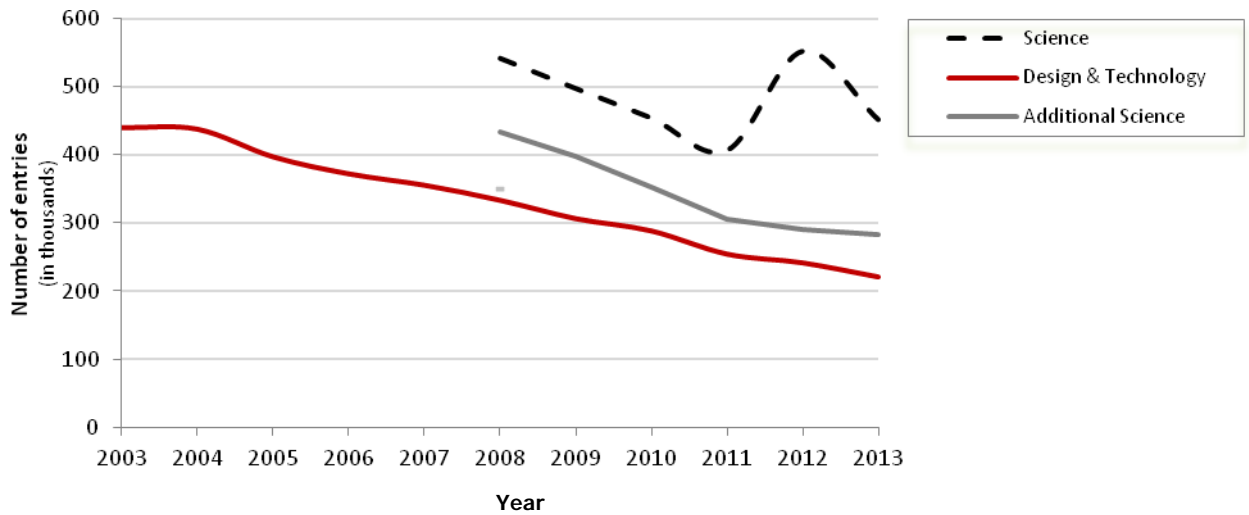
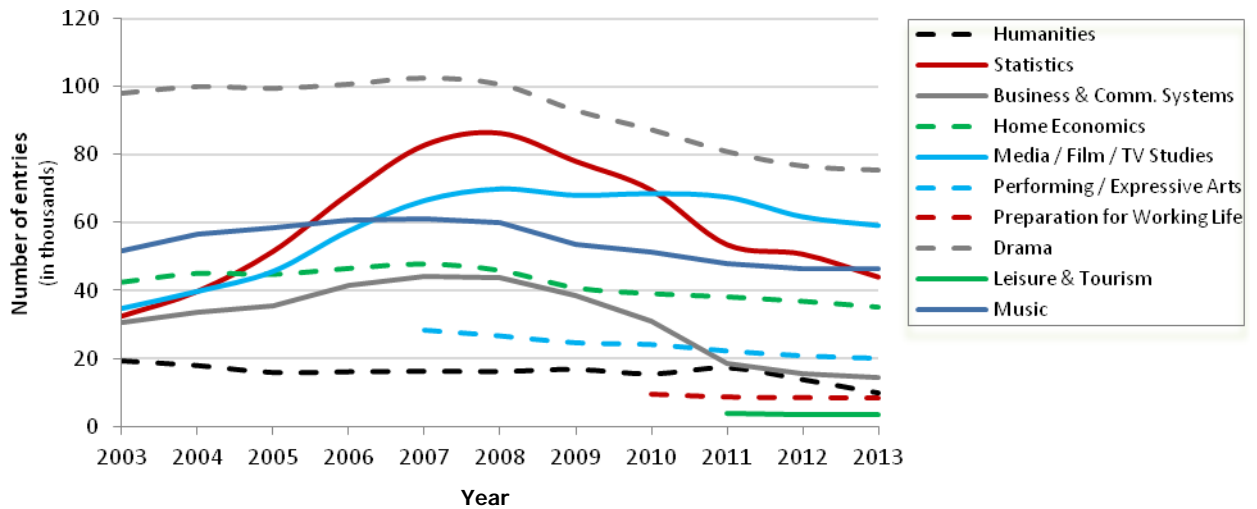


Table E GCSE full course subject decreases (entry less than 100,000)
(Changes from 2012-2013)

Ranking	Subject	% change	2012 Number of candidates	2013 Number of candidates
1 (2)	Humanities	-29.02	13782	9783
2 (10)	Statistics	-13.33	50620	43870
3 (3)	Business & Comm. Systems	-7.18	15603	14483
4 (13)	Home Economics	-4.80	36694	34931
5 (6)	Media / Film / TV Studies	-4.16	61680	59114
6 (7)	Performing / Expressive Arts	-3.70	20846	20075
7 (16)	Preparation for Working Life	-1.91	8321	8162
8 (9)	Drama	-1.63	76608	75359
9 (4)	Leisure & Tourism	-1.47	3533	3481
10 (12)	Music	-0.30	46368	46231

(2012 ranking in brackets. Subjects having a year-on-year increase in 2012 are shown as blank.)

Chart 7 Top GCSE full course subject decreases, 2013 (entry less than 100,000)



GCSE Short Course trends

Table F Top GCSE short course subjects in 2013

Ranking	Subject	% of total	Number of candidates
1 (1)	Religious Studies	63.63	174364
2 (2)	Citizenship Studies	15.40	42203
3 (5)	Welsh: Second Language	5.39	14776
4 (3)	Physical Education	4.68	12813
5 (4)	ICT	4.35	11908

(2012 ranking in brackets)

Chart 8 Top ten GCSE short course subjects as a percentage of the total entry over the period 2002 to 2012

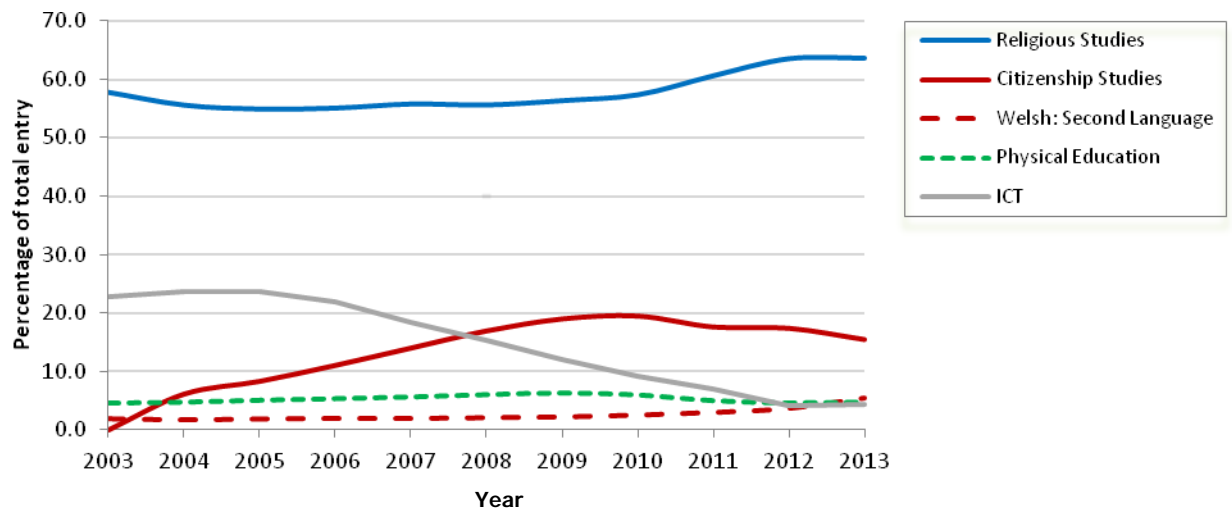


Table G Top GCSE short course subject increases (Changes from 2012-2013)

Ranking	Subject	% change	2012 Number of candidates	2013 Number of candidates
1 (4)	Economics	22.23	1291	1578
2 (3)	Welsh: Second Language	7.97	13685	14776

(2012 ranking in brackets. Subjects having a year-on-year decrease in 2012 are shown as blank.)

Chart 9 Top GCSE short course subject increases, 2013

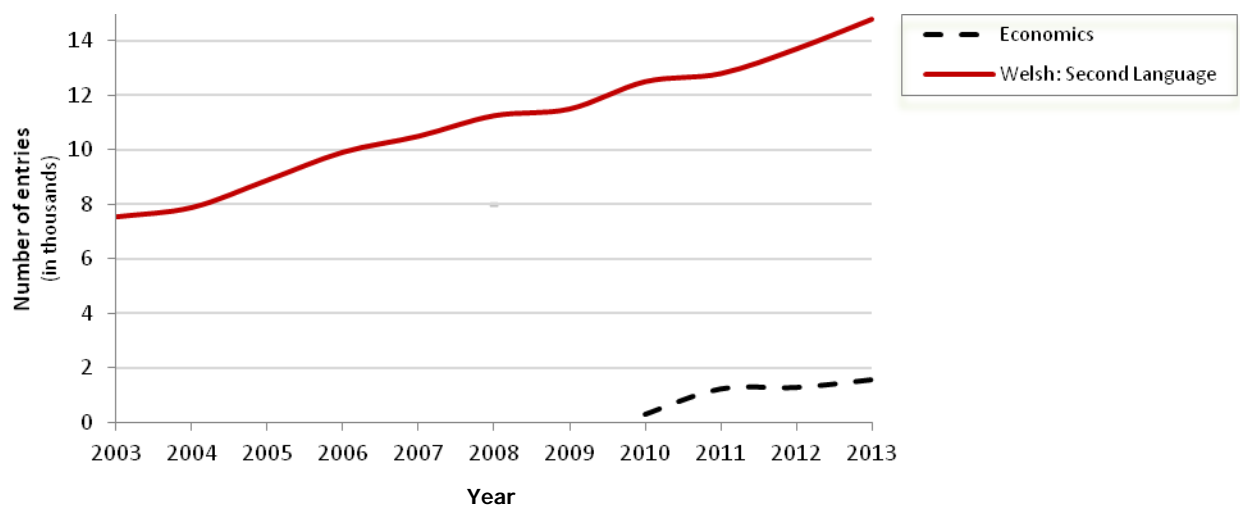
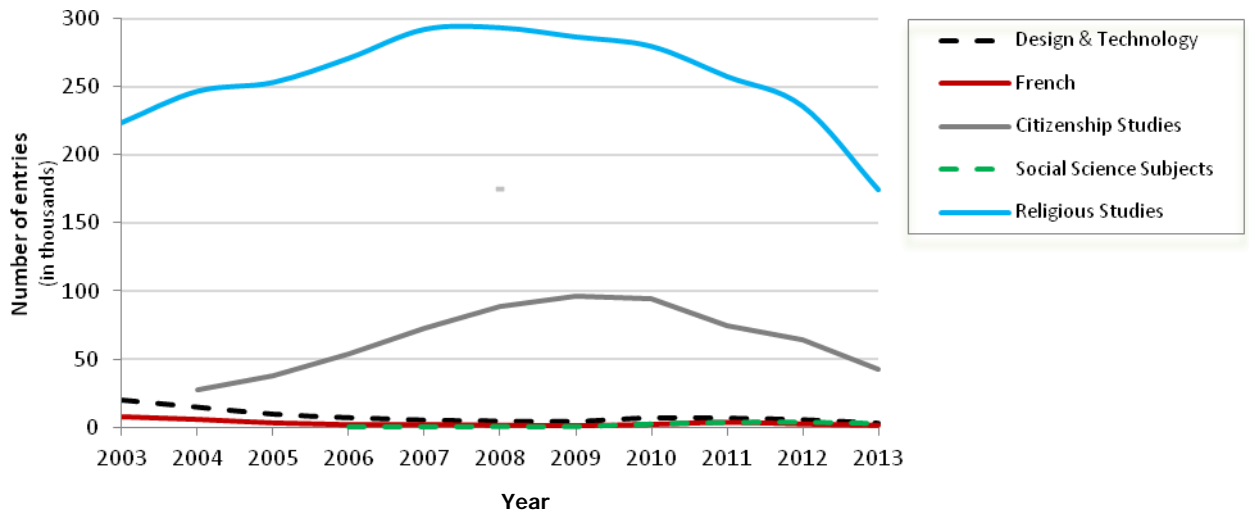


Table H Top GCSE short course subject decreases (Changes from 2012-2013)

Ranking	Subject	% change	2012 Number of candidates	2013 Number of candidates
1 (5)	Design & Technology	-48.49	5339	2750
2 (3)	French	-35.41	2547	1645
3 (6)	Citizenship Studies	-34.34	64279	42203
4	Social Science Subjects	-27.81	3740	2700
5 (8)	Religious Studies	-26.09	235916	174364

(2012 ranking in brackets. Subjects having a year-on-year increase in 2012 are shown as blank.)

Chart 10 Top GCSE short course subject decreases, 2013



GCSE Double Award trends

Table I Top GCSE double award subjects in 2013

Ranking	Subject	% of total	Number of candidates
1 (2)	Science: Dbl Awd	28.02	7422
2 (3)	Health & Social Care	18.88	5000
3 (4)	Business	11.71	3101
4 (5)	Media	9.37	2482
5 (8)	ICT	9.04	2393

(2012 ranking in brackets)

Chart 11 Top GCSE double award subjects as a percentage of the total entry over the period 2002 to 2013

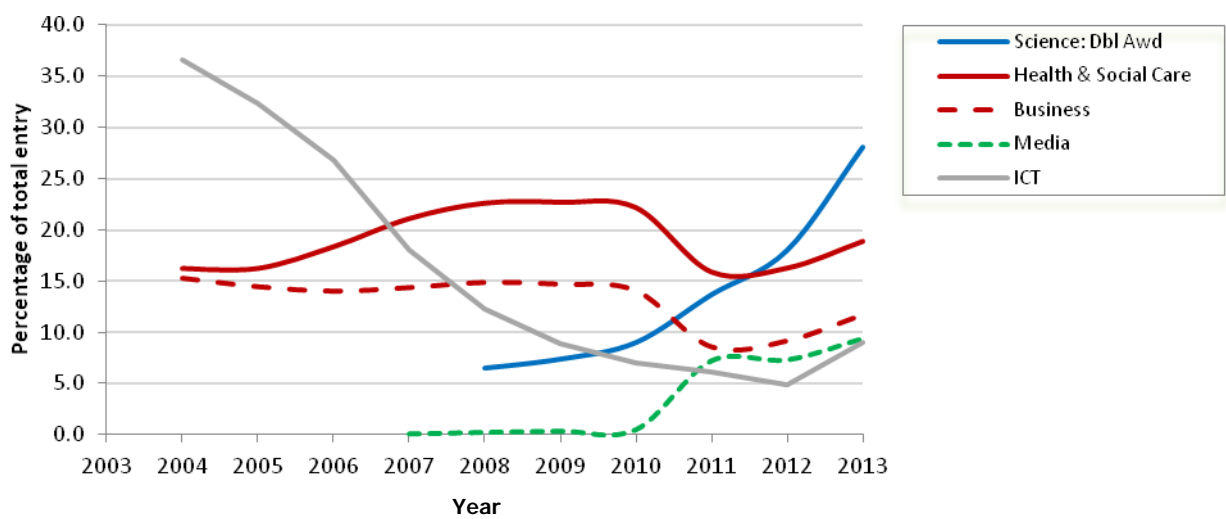


Table J GCSE double award subject increases (Changes from 2012-2013)

Ranking	Subject	% change	2012 Number of candidates	2013 Number of candidates
1	ICT	19.77	1998	2393

(2012 ranking in brackets. Subjects having a year-on-year decrease in 2012 are shown as blank.)

Chart 12 GCSE double award subject increases, 2013 (All subjects)

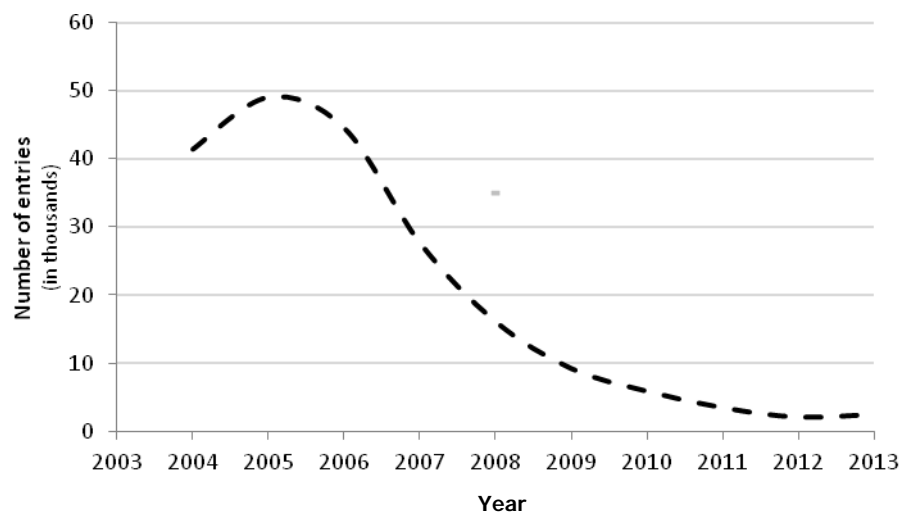
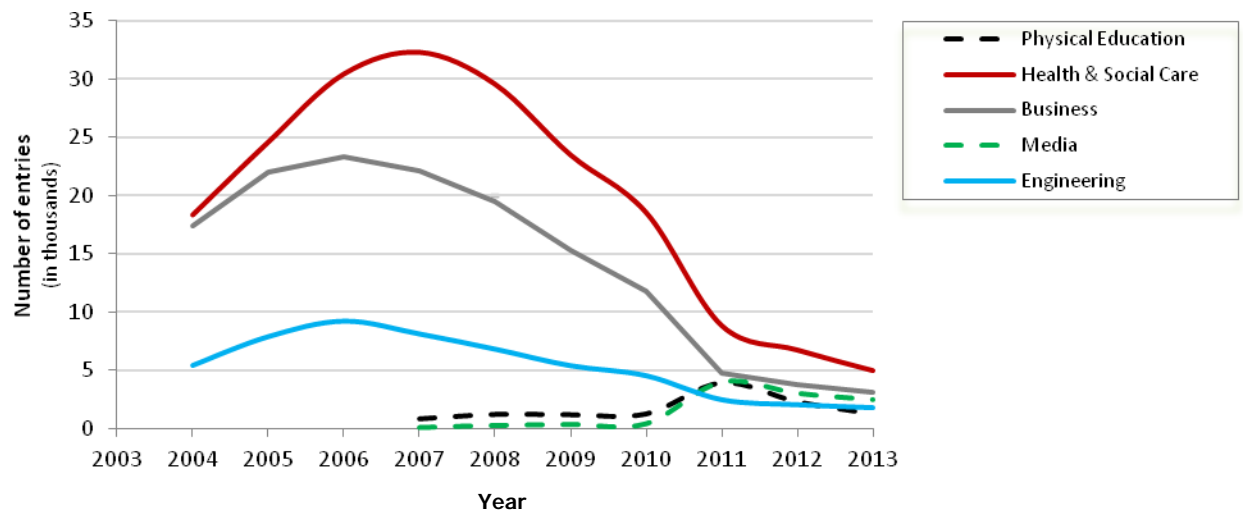


Table K GCSE double award subject decreases (Changes from 2012-2013)

Ranking	Subject	% change	2012 Number of candidates	2013 Number of candidates
1 (1)	Physical Education	-45.11	2301	1263
2 (8)	Health & Social Care	-26.10	6766	5000
3 (9)	Business	-18.37	3799	3101
4 (7)	Media	-18.17	3033	2482
5 (10)	Engineering	-12.69	2017	1761

(2012 ranking in brackets. Subjects having a year-on-year increase in 2012 are shown as blank.)

Chart 13 GCSE double award subject decreases, 2013 (All subjects)



Entry Level trends

Table L Top Entry Level subjects in 2013

Ranking	Subject	% of total	Number of candidates
1 (1)	Mathematics	17.63	10610
2 (2)	English	16.67	10035
3 (4)	Physical Education	12.64	7607
4 (3)	Science	12.45	7492
5 (5)	Religious Studies	9.16	5515

(2012 ranking in brackets)

Chart 14 Top Entry Level subjects as a percentage of the total entry over the period 2002 to 2013

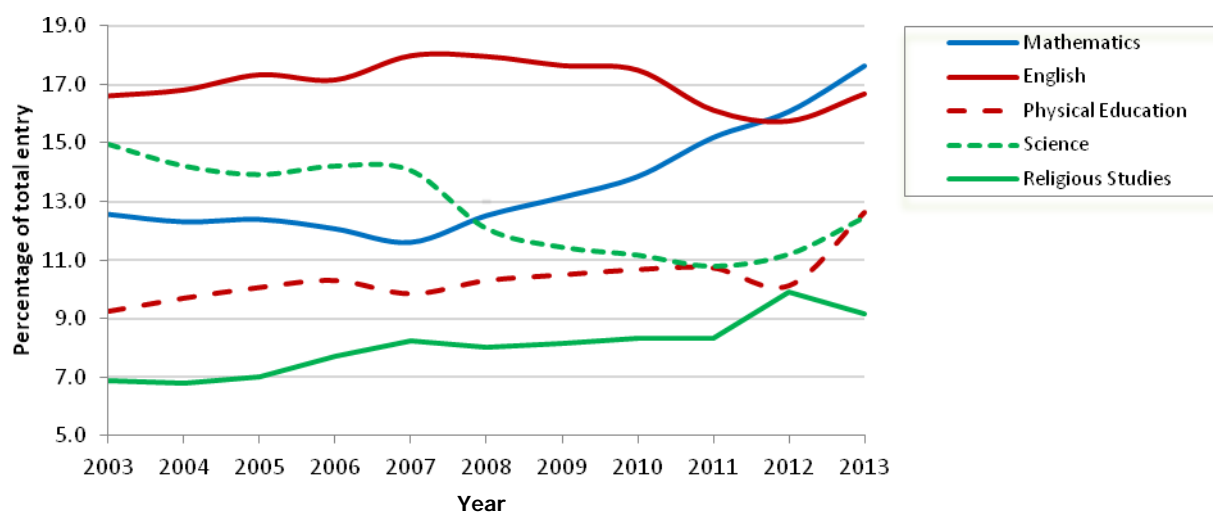


Table M Entry Level subject increases (Changes from 2012-2013)

Ranking	Subject	% change	2012 Number of candidates	2013 Number of candidates
1 (1)	Classical Subjects	18.89	1149	1366
2	Geography	15.22	1242	1431
3	Spanish	6.97	1047	1120
4	Physical Education	0.45	7573	7607

(2012 ranking in brackets. Subjects having a year-on-year decrease in 2012 are shown as blank.)

Chart 15 Top Entry Level subjects increases, 2013

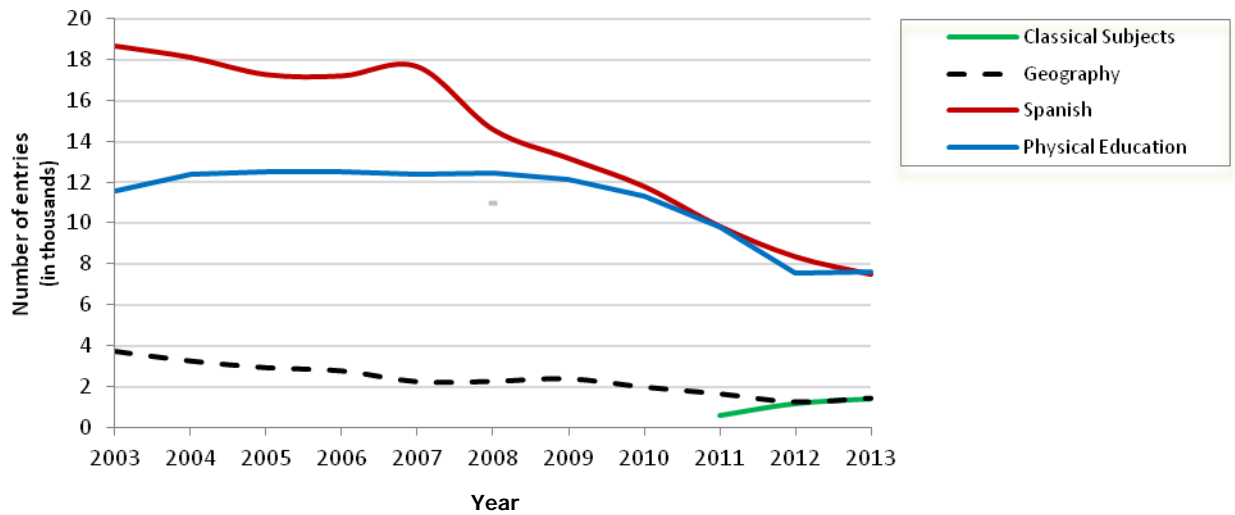
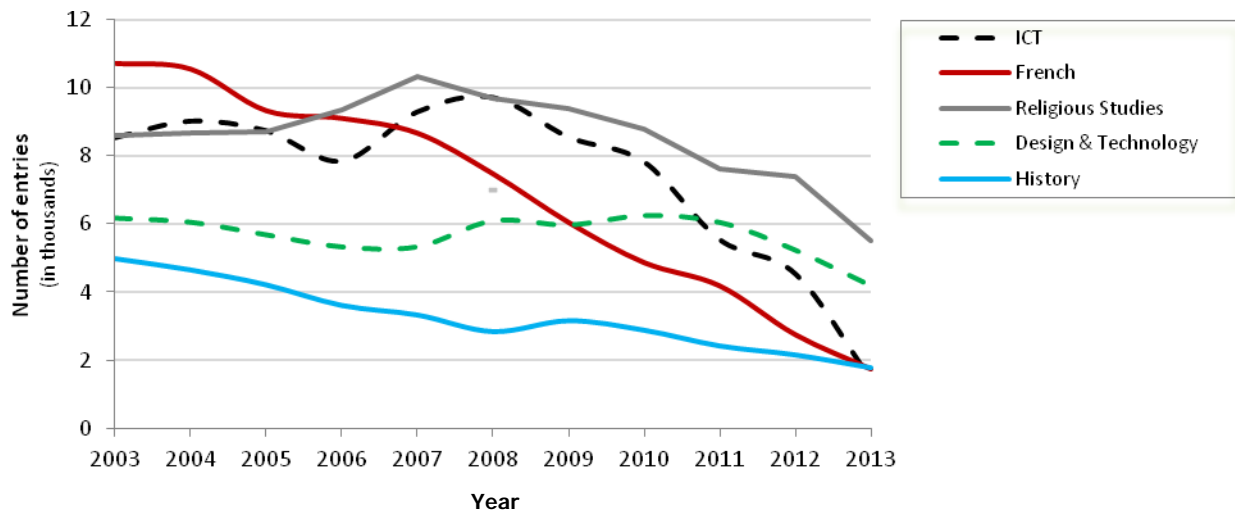


Table N Top Entry Level subject decreases (Changes from 2012-2013)

Ranking	Subject	% change	2012 Number of candidates	2013 Number of candidates
1 (6)	ICT	-68.17	1443	4534
2 (2)	French	-36.72	1739	2748
3 (13)	Religious Studies	-25.42	5515	7395
4 (10)	Design & Technology	-19.82	4190	5226
5 (12)	History	-17.47	1786	2164

(2012 ranking in brackets. Subjects having a year-on-year increase in 2012 are shown as blank.)

Chart 14 Top Entry Level subjects decreases, 2013



Project Trends

Table O Changes from 2012-2013

Subject	% change	2012 Number of candidates	2013 Number of candidates
Level 1 Project	-21.5	3445	2705
Level 2 Project	-40.1	21007	12584