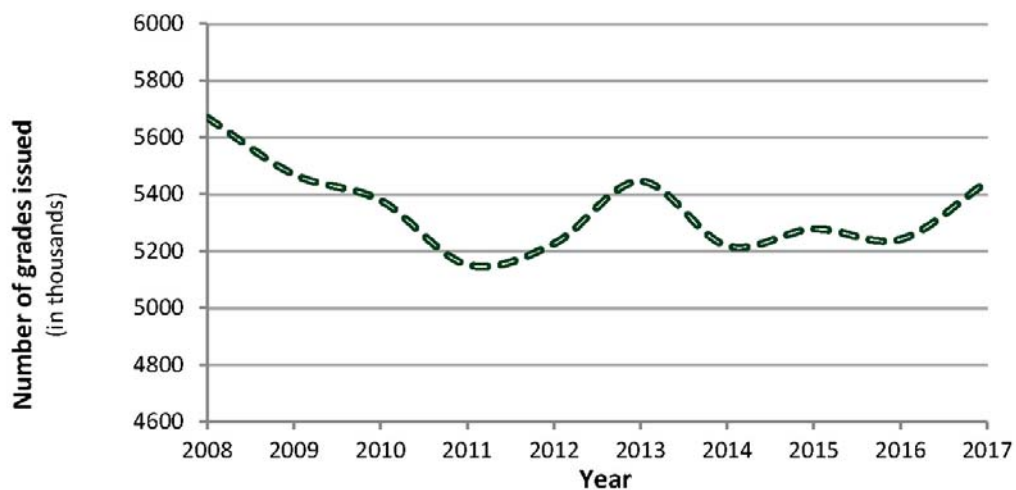


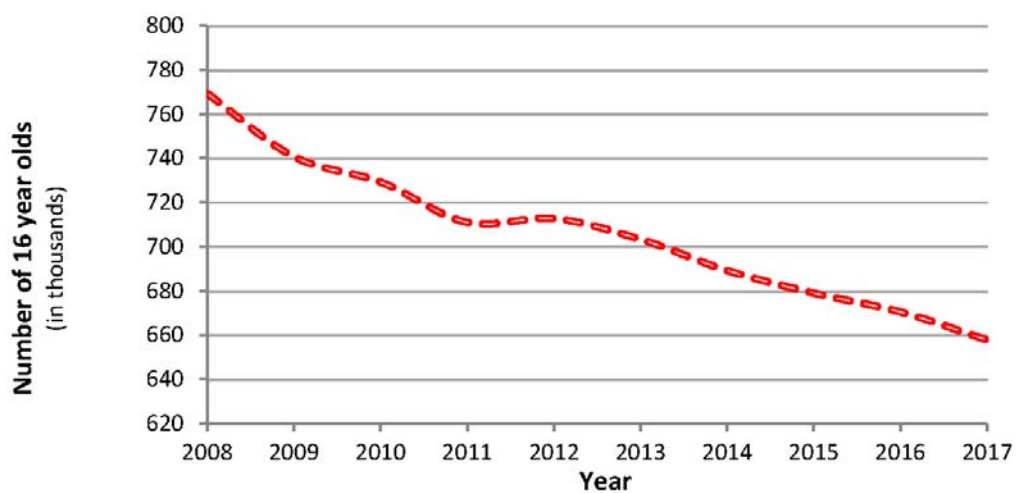
**TABLES – GCSE, Project and Entry Level Trends - UK, 2017**

**GCSE full course trends**

**Chart 1 Total entry for GCSE full course subjects, 2008-2017**



**Chart 2 Cohort size 2008-2017**

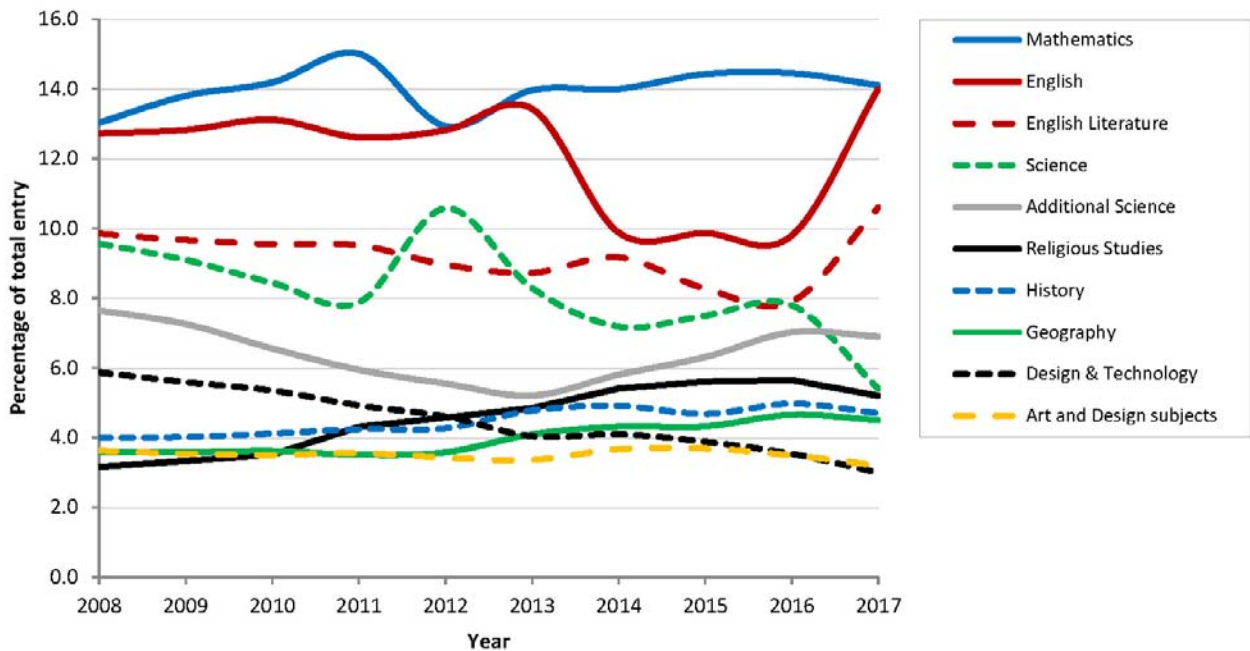


**Table A Top ten GCSE full course subjects in 2017**

Ranking	Subject	% of total	Number of candidates
1 (1)	Mathematics	14.1	770034
2 (2)	English	14.0	760277
3 (3)	English Literature	10.6	574358
4 (5)	Additional Science	6.9	376347
5 (4)	Science	5.4	295889
6 (6)	Religious Studies	5.2	282193
7 (7)	History	4.7	255954
8 (8)	Geography	4.5	245964
9 (10)	Art and Design subjects	3.2	175792
10 (9)	Design & Technology	3.0	165815

(2016 ranking in brackets)

**Chart 3 Top ten GCSE full course subjects as a percentage of the total entry over the period 2008 to 2017**

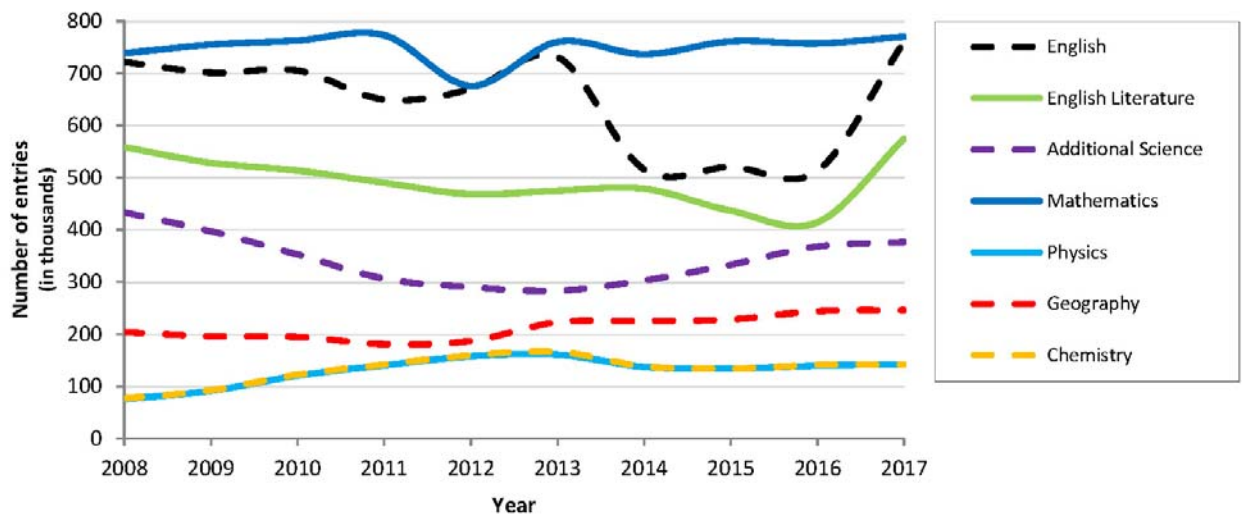


**Table B Top GCSE full course subject increases (entry greater than 100,000)**  
(Changes from 2016-2017)

Ranking	Subject	% change	2016 Number of candidates	2017 Number of candidates
1	English	48.1	513285	760277
2	English Literature	38.6	414286	574358
3 (1)	Additional Science	2.3	368033	376347
4	Mathematics	1.7	757296	770034
5 (5)	Physics	1.6	139805	141977
6 (2)	Geography	0.8	244033	245964
7 (3)	Chemistry	0.4	141245	141867

(2016 ranking in brackets. Subjects having a year-on-year decrease in 2016 are shown as blank)

**Chart 4 Top GCSE full course subject increases, 2017 (entry greater than 100,000)**

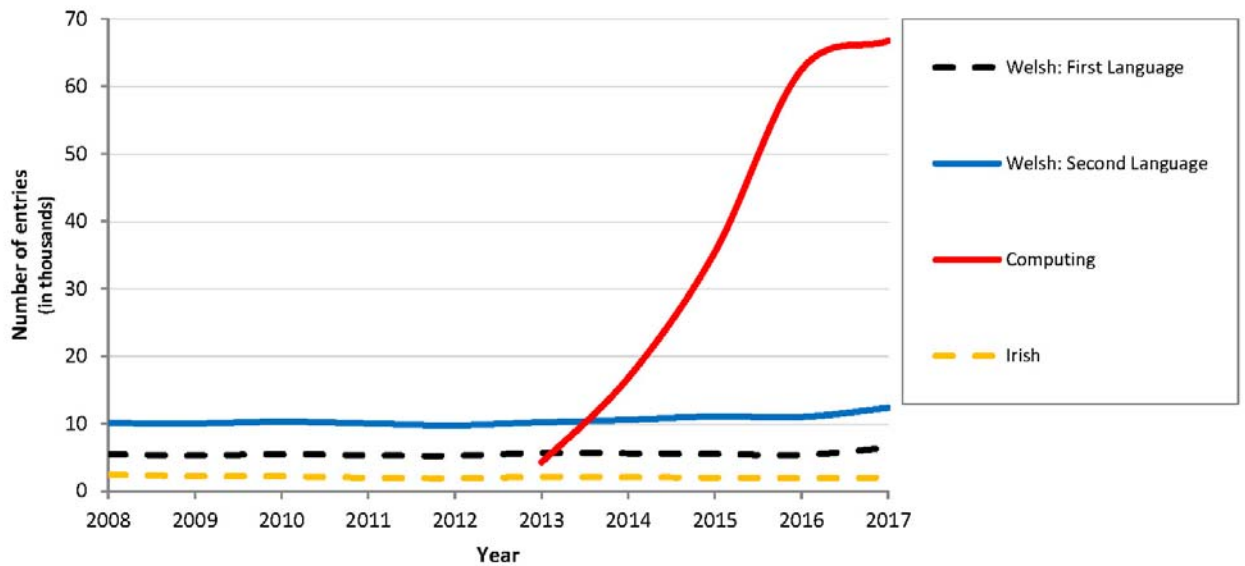


**Table C Top GCSE full course subject increases (entry less than 100,000)**  
(Changes from 2016-2017)

Ranking	Subject	% change	2016 Number of candidates	2017 Number of candidates
1	Welsh: First Language	20.5	5331	6422
2 (2)	Construction	16.6	592	690
3	Welsh: Second Language	12.3	10967	12311
4 (1)	Computing	6.9	62454	66751
5	Other Technology	5.9	869	920
6	Irish	4.7	1905	1995
7 (5)	Manufacturing	1.4	277	281

(2016 ranking in brackets. Subjects having a year-on-year decrease in 2016 are shown as blank.)

**Chart 5 Top GCSE full course subject increases, 2017 (entry less than 100,000\*)**



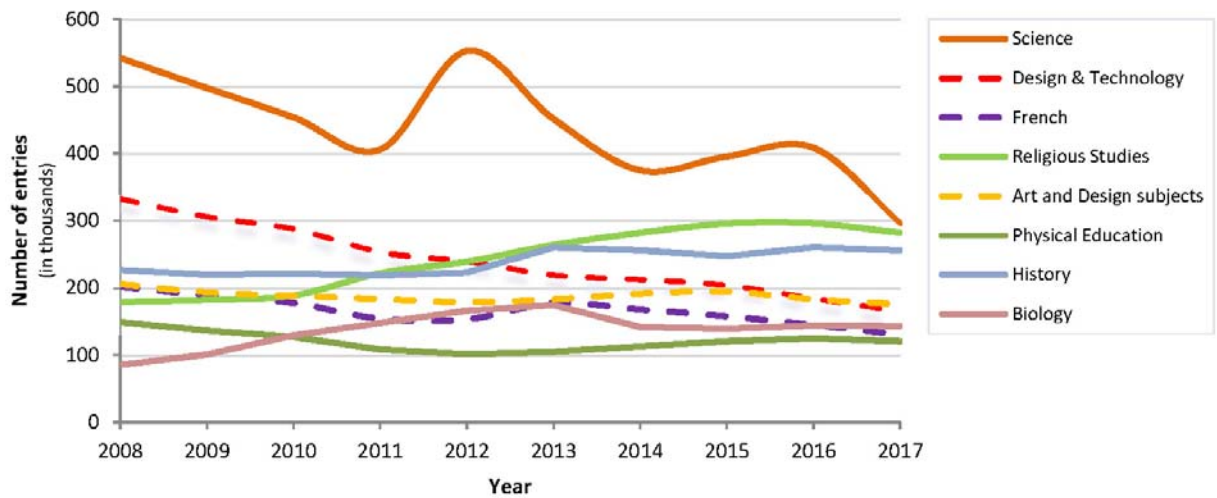
\*Entries less than 1000 excluded.

**Table D Top GCSE full course subject decreases (entry greater than 100,000)**  
(Changes from 2016-2017)

Ranking	Subject	% change	2016 Number of candidates	2017 Number of candidates
1	Science	-27.6	408569	295889
2 (1)	Design & Technology	-10.5	185279	165815
3 (2)	French	-9.9	144892	130509
4	Religious Studies	-4.7	296010	282193
5 (3)	Art and Design subjects	-4.0	183085	175792
6	Physical Education	-3.6	125120	120613
7	History	-1.8	260521	255954
8	Biology	-0.6	144148	143340

(2016 ranking in brackets. Subjects having a year-on-year increase in 2016 are shown as blank.)

**Chart 6 Top GCSE full course subject decreases, 2017 (entry more than 100,000)**

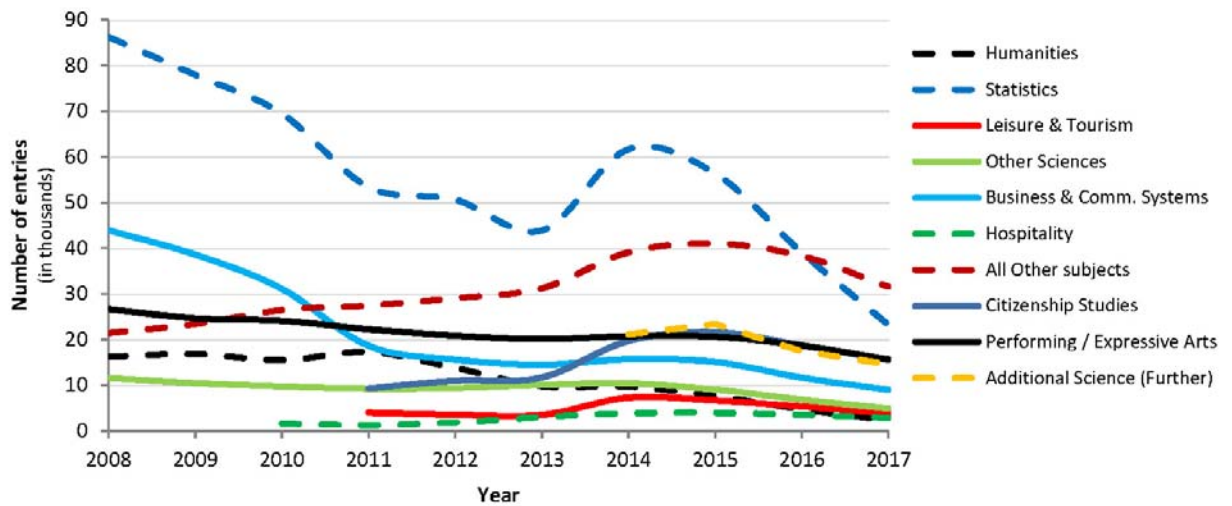


**Table E GCSE full course subject decreases (entry less than 100,000)**  
(Changes from 2016-2017)

Ranking	Subject	% change	2016 Number of candidates	2017 Number of candidates
1 (1)	Humanities	-51.7	4741	2290
2 (2)	Statistics	-40.5	39034	23215
3 (7)	Leisure & Tourism	-28.4	5323	3809
4 (5)	Other Sciences	-28.1	6824	4905
5 (6)	Business & Comm. Systems	-23.0	11652	8977
6 (11)	Hospitality	-19.4	3497	2818
7 (16)	All Other subjects	-17.6	38301	31555
8 (9)	Citizenship Studies	-16.9	18720	15553
9 (13)	Performing / Expressive Arts	-16.3	18676	15641
10 (3)	Additional Science (Further)	-16.1	17409	14606

(2016 ranking in brackets.)

**Chart 7 Top GCSE full course subject decreases, 2017 (entry fewer than 100,000)**



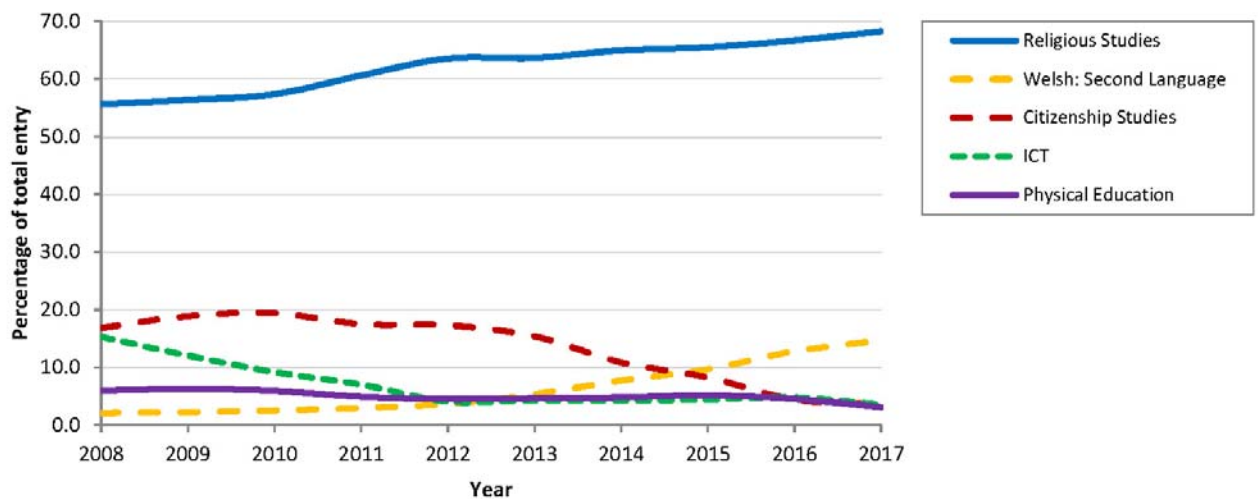
## GCSE short course trends

**Table F Top GCSE short course subjects in 2017**

Ranking	Subject	% of total	Number of candidates
1 (1)	Religious Studies	68.2	57844
2 (2)	Welsh: Second Language	14.7	12452
3 (4)	Citizenship Studies	3.7	3108
4 (3)	ICT	3.6	3019
5 (6)	Physical Education	3.1	2636

(2016 ranking in brackets)

**Chart 8 Top five GCSE short course subjects as a percentage of the total entry over the period 2008 to 2017**



## GCSE double award trends

**Table G Top GCSE double award subjects in 2017**

Ranking	Subject	% of total	Number of candidates
1 (1)	Science: Dbl Awd	61.5	7127
2 (3)	Business	12.6	1460
3 (2)	Health & Social Care	7.2	830
4 (4)	Engineering	5.4	631
5 (7)	Hospitality	2.9	338

(2016 ranking in brackets)

## Entry Level trends

**Table H Top Entry Level subjects in 2017**

Ranking	Subject	% of total	Number of candidates
1 (1)	Mathematics	31.3	14374
2 (3)	English	22.9	10521
3 (2)	Science	17.1	7838
4 (5)	ICT	9.2	4207
5 (4)	Physical Education	5.2	2407

(2016 ranking in brackets)

## Project Trends

**Table I Changes from 2016-2017**

Subject	% change	2016 Number of candidates	2017 Number of candidates
Level 1 Project	-23.1	843	648
Level 2 Project	-29.7	4829	3393