

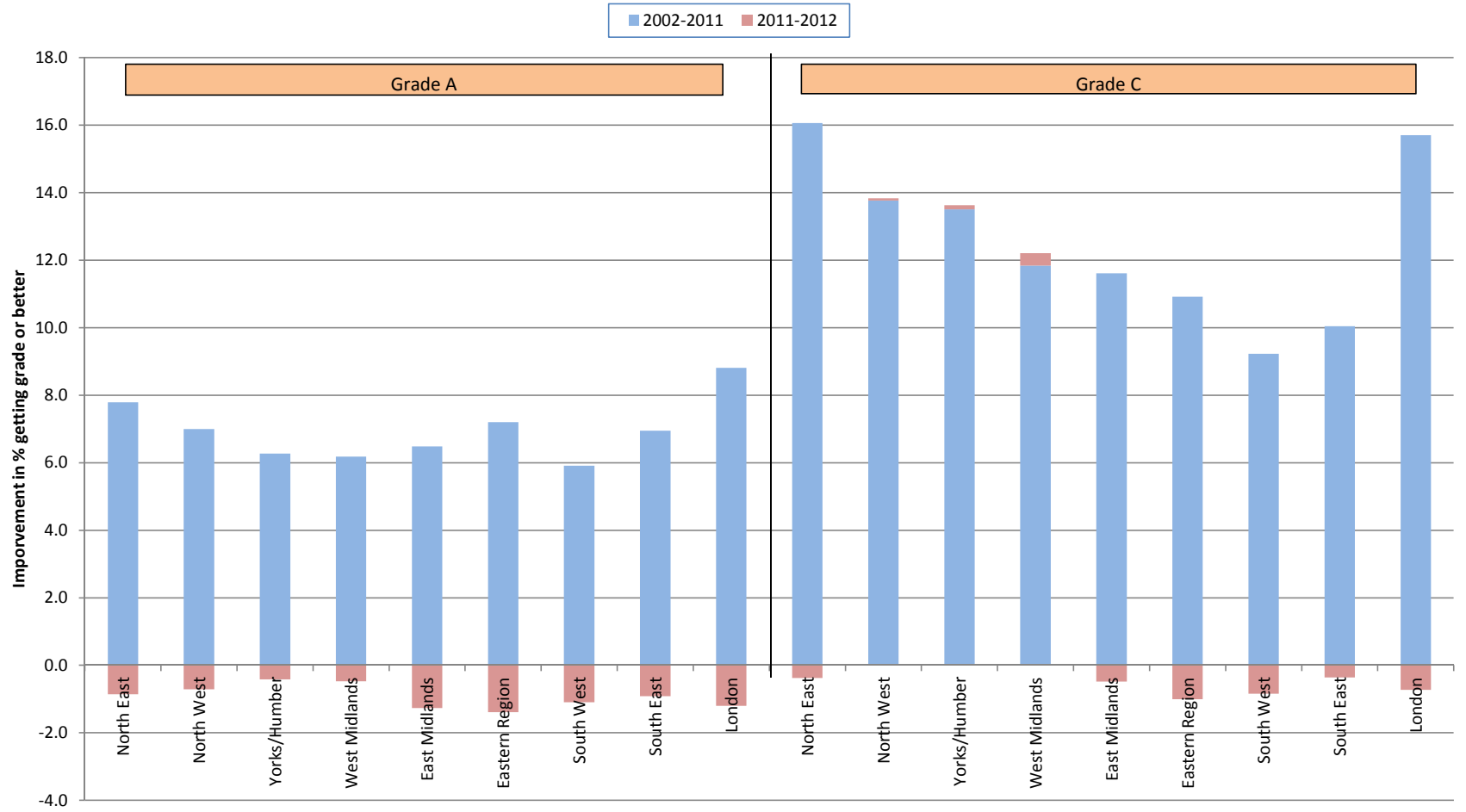
# Provisional Results 2012

## GCSE

## Charts and Data Handout



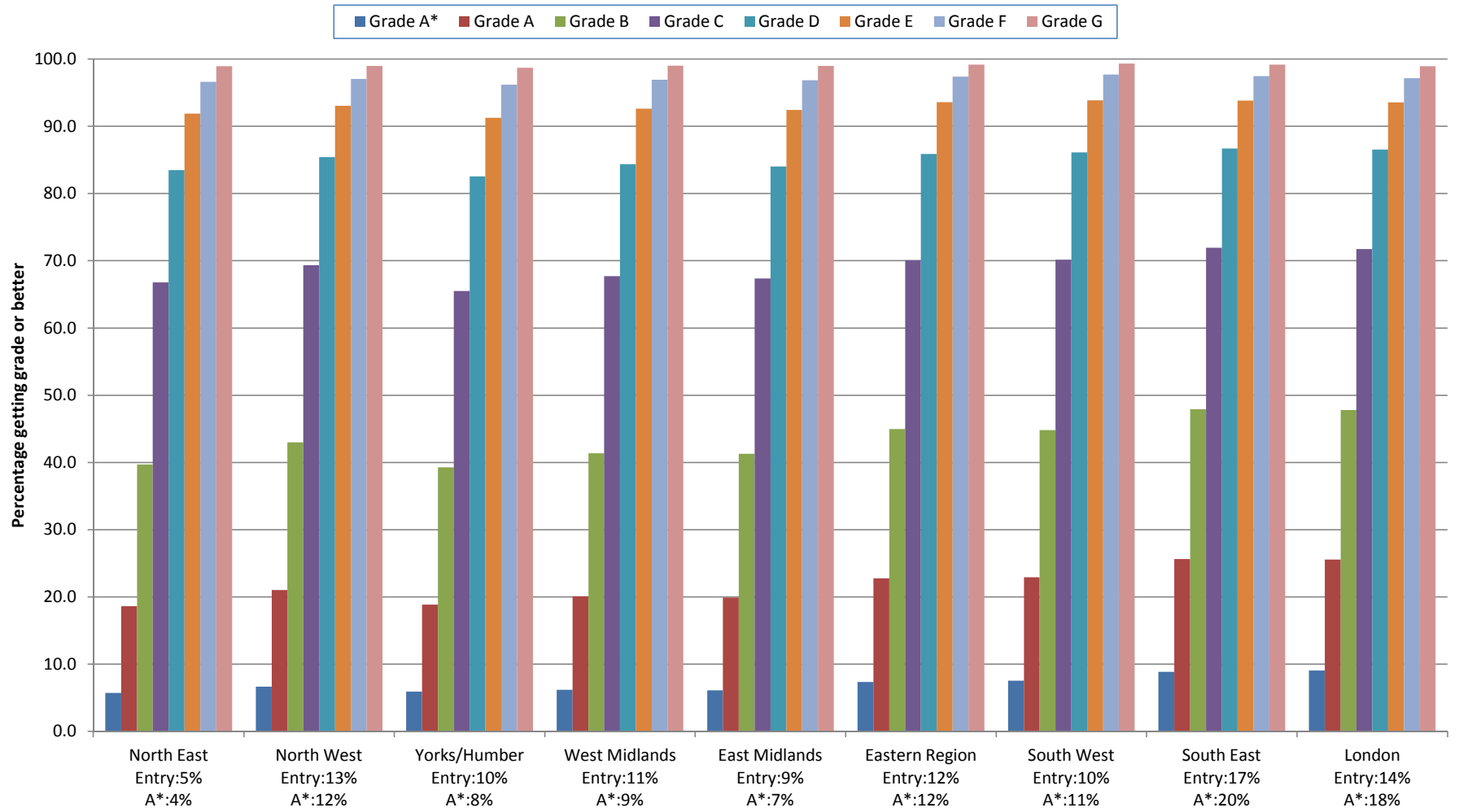
### Improvements at Grades A and C, 2002 to 2012, by Region



**Grade A****Grade C**

<b>Region</b>	<b>Cum. % at Grade A</b>			<b>Change</b>		<b>Cum. % at Grade C</b>			<b>Change</b>	
	<b>2002</b>	<b>2011</b>	<b>2012</b>	<b>2002-2011</b>	<b>2011-2012</b>	<b>2002</b>	<b>2011</b>	<b>2012</b>	<b>2002-2011</b>	<b>2011-2012</b>
North East	11.7	19.5	18.6	7.8	-0.9	51.1	67.2	66.8	16.1	-0.4
North West	14.7	21.7	21.0	7.0	-0.7	55.5	69.3	69.3	13.8	0.1
Yorks/Humber	13.0	19.3	18.8	6.3	-0.4	51.9	65.4	65.5	13.5	0.1
West Midlands	14.4	20.6	20.1	6.2	-0.5	55.5	67.3	67.7	11.8	0.4
East Midlands	14.7	21.2	19.9	6.5	-1.3	56.2	67.8	67.4	11.6	-0.5
Eastern Region	17.0	24.2	22.8	7.2	-1.4	60.2	71.1	70.1	10.9	-1.0
South West	18.1	24.0	22.9	5.9	-1.1	61.8	71.0	70.2	9.2	-0.8
South East	19.6	26.5	25.6	6.9	-0.9	62.3	72.3	71.9	10.0	-0.4
London	18.0	26.8	25.6	8.8	-1.2	56.8	72.5	71.7	15.7	-0.7

## 2012 GCSE results by region



	Grade A*	Grade A	Grade B	Grade C	Grade D	Grade E	Grade F	Grade G	U
North East	5.7	18.6	39.7	66.8	83.5	91.9	96.6	98.9	100.0
North West	6.7	21.0	43.0	69.3	85.4	93.1	97.0	99.0	100.0
Yorks/Humber	5.9	18.8	39.3	65.5	82.5	91.3	96.2	98.7	100.0
West Midlands	6.2	20.1	41.4	67.7	84.4	92.6	96.9	99.0	100.0
East Midlands	6.1	19.9	41.3	67.4	84.0	92.4	96.8	99.0	100.0
Eastern Region	7.4	22.8	45.0	70.1	85.9	93.6	97.4	99.2	100.0
South West	7.6	22.9	44.8	70.2	86.1	93.9	97.7	99.3	100.0
South East	8.8	25.6	47.9	71.9	86.7	93.8	97.5	99.2	100.0
London	9.0	25.6	47.8	71.7	86.5	93.5	97.2	98.9	100.0

	Proportion of A* - A grades	Proportion of Total Entry
North East	4	5
North West	12	13
Yorks/Humber	8	10
West Midlands	9	11
East Midlands	7	8
Eastern Region	12	12
South West	11	10
South East	20	17
London	17	14