

TABLES - GCSE, Applied GCSE and Entry Level Trends 2009

GCSE full course trends

Chart 1 Total entry for GCSE full course subjects

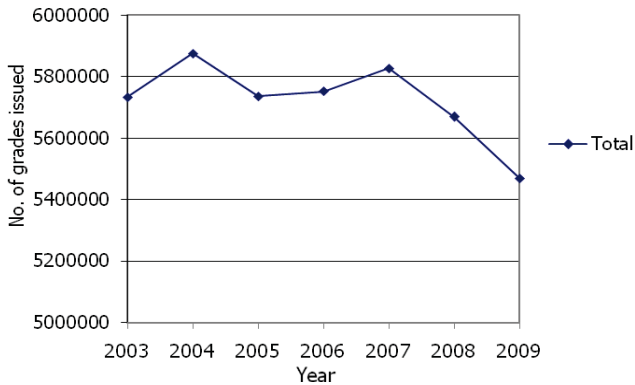


Chart 2 Cohort size

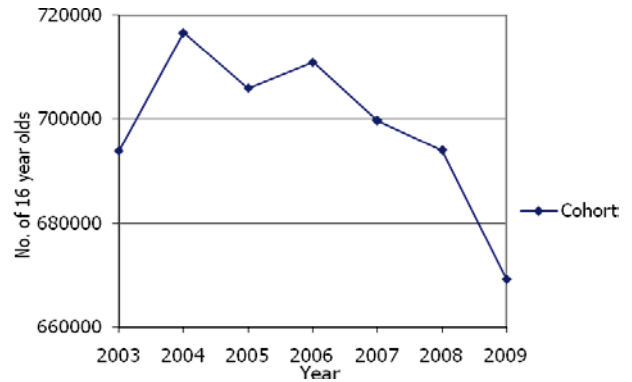


Table A Top 10 GCSE full course subjects

Subject (2008 ranking in brackets)			2009	
			% of total	Number of candidates
1 (1)	Mathematics	13.80	754738	
2 (2)	English	12.82	701196	
3 (3)	English Literature	9.66	528315	
4 (4)	Science	9.02	493505	
5 (5)	Additional Science	7.26	396946	
6 (6)	Design & Technology	5.59	305809	
7 (7)	History	4.02	219809	
8 (9)	Geography	3.58	196018	
9 (8)	Art	3.54	193578	
10 (10)	French	3.45	188688	

Chart 3

Top 10 GCSE full course subjects

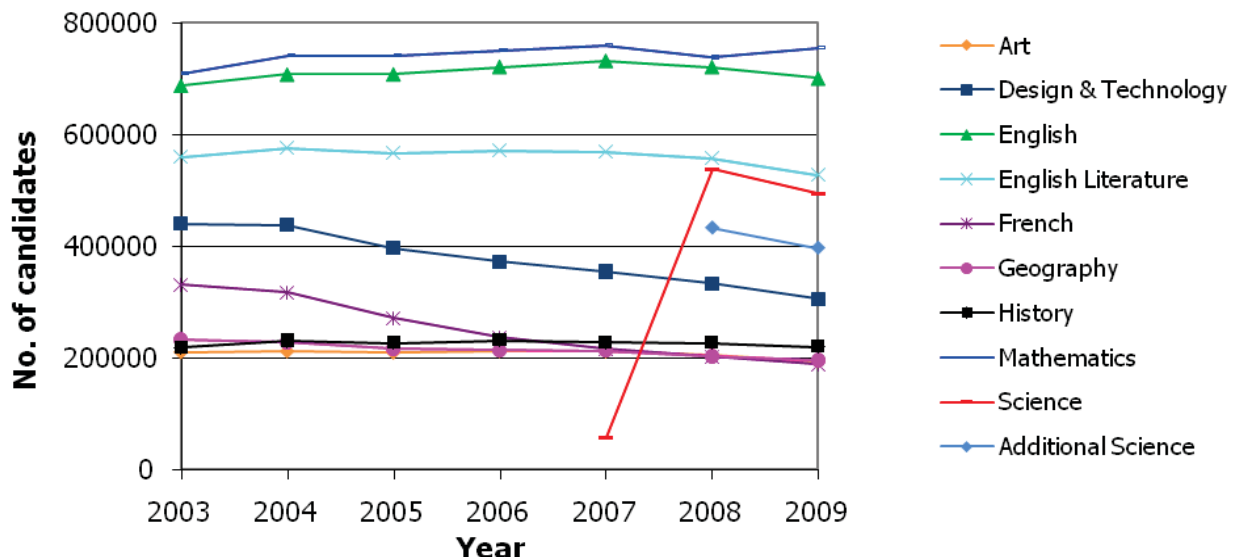


Table B Large entry (greater than 75,000) GCSE full course subject increases

Subject		Changes from 2008-2009		
		% change	2008 Number of candidates	2009 Number of candidates
(2008 ranking in brackets)				
1	(4) Physics	20.95	75383	91179
2	(3) Chemistry	20.34	76656	92246
3	(2) Biology	17.99	85521	100905
4	Mathematics	2.21	738451	754738
5	(1) Religious Studies	1.76	179139	182288

N.B Mathematics is omitted from the chart below since its entry is so significantly greater than the listed subjects.

Chart 4

Large entry GCSE full course subject increases

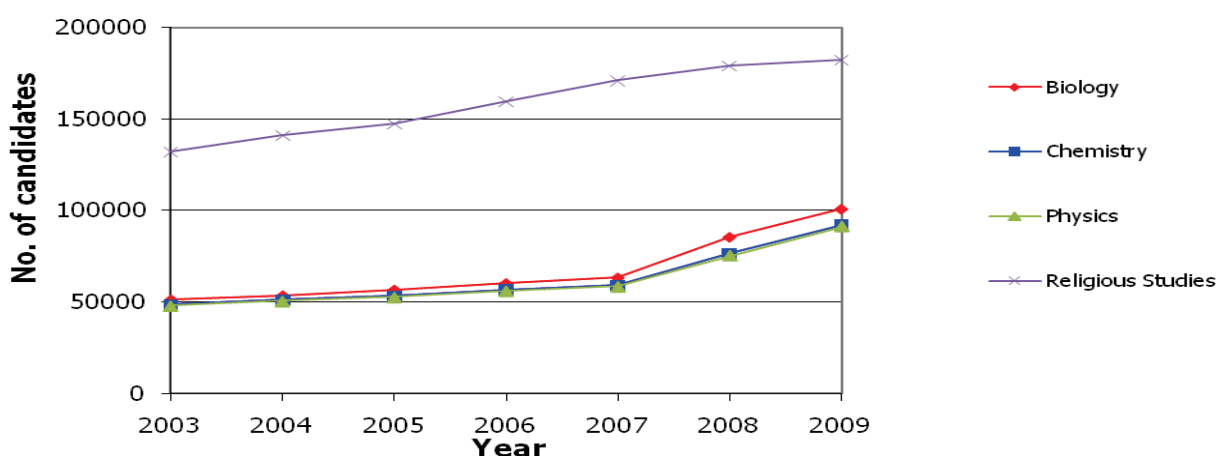


Table C Other GCSE full course subject increases (entry below 75,000)

Subject		Changes from 2008-2009		
		% change	2008 Number of candidates	2009 Number of candidates
(2008 ranking in brackets)				
1	(1) Mathematics (Additional)	10.56	16973	18765
2	Other Modern Languages	4.51	31682	33111
3	Humanities	3.80	16200	16816

Chart 5

Other GCSE full course subject increases

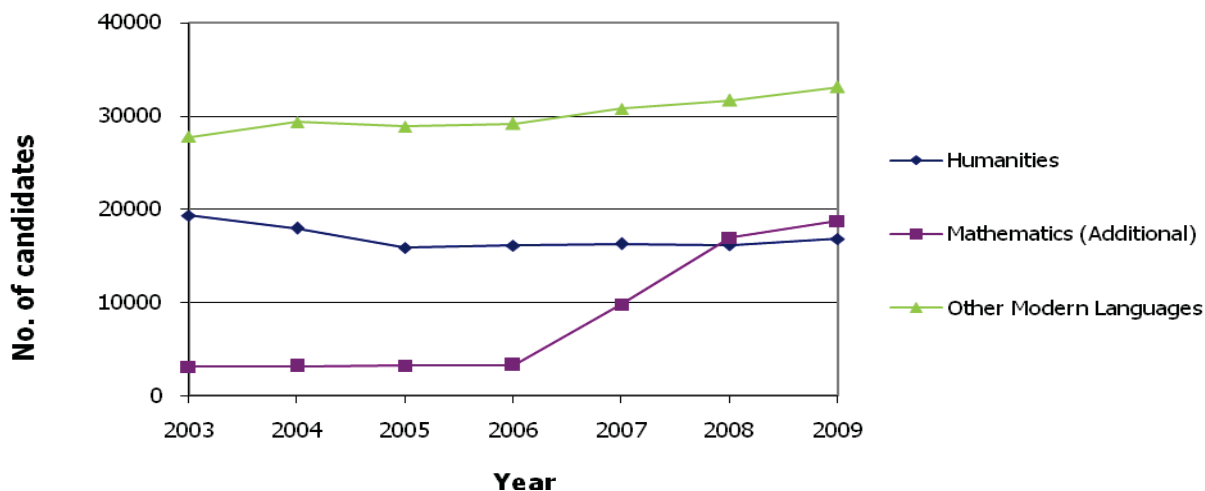


Table D Large entry (greater than 75,000) GCSE full course subject decreases

Subject (2008 ranking in brackets)		Changes from 2008-2009		
		% change	2008 Number of candidates	2009 Number of candidates
1	Additional Science	-8.43	433468	396946
2 (5)	Physical Education	-8.34	149068	136631
3	Science	-8.20	537606	493505
4 (2)	Design & Technology	-8.11	332787	305809
5 (3)	French	-6.56	201940	188688

Chart 6

Large entry GCSE full course subject decreases

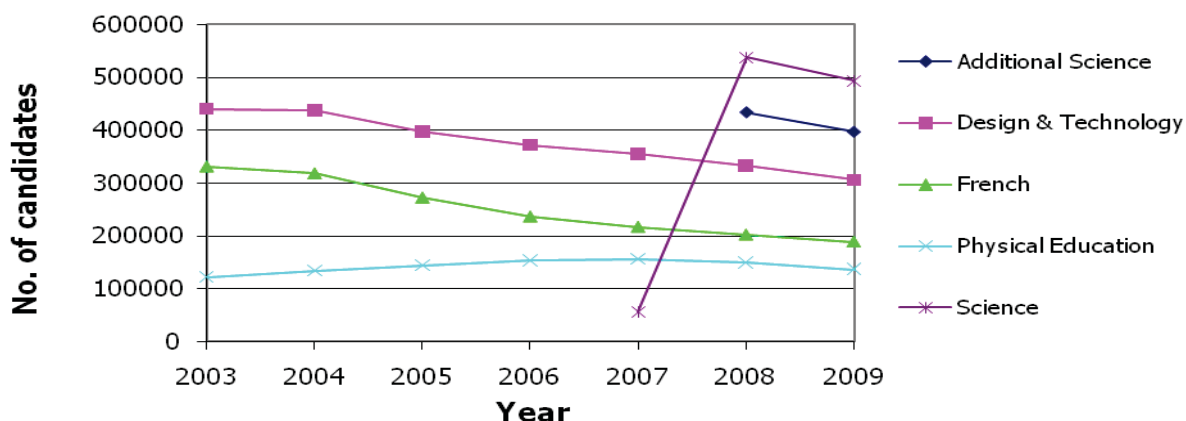
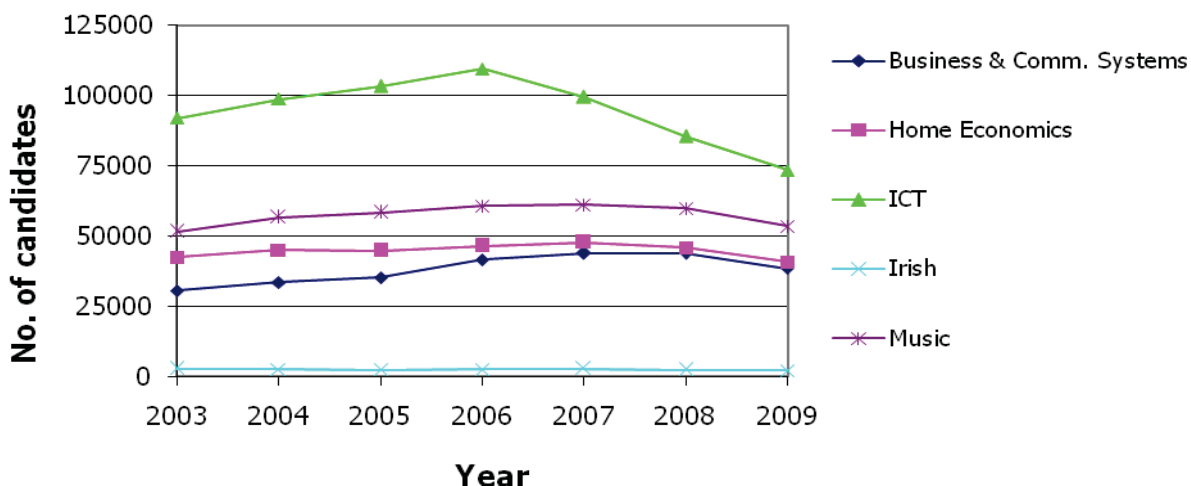


Table E Other GCSE full course subject decreases (entry below 75,000)

Subject (2008 ranking in brackets)		Changes from 2008-2009		
		% change	2008 Number of candidates	2009 Number of candidates
1	Information and Communication Technology	-14.11	85599	73519
2	Business & Comm. Systems	-12.12	43899	38579
3 (4)	Home Economics	-11.28	45903	40726
4 (1)	Irish	-10.57	2421	2165
5 (5)	Music	-10.46	59824	53568

Chart 7

Other GCSE full course subject decreases



GCSE short course trends

Table F Top 5 GCSE short course subjects

Subject (2008 ranking in brackets)			2009	
			% of total	Number of candidates
1	(1)	Religious Studies	56.35	286941
2	(2)	Citizenship Studies	18.89	96200
3	(3)	Information and Communication Technology.	12.07	61443
4	(4)	Physical Education	6.30	32073
5	(5)	Welsh: Second Language	2.26	11486

Chart 8

Top 5 GCSE short course subjects

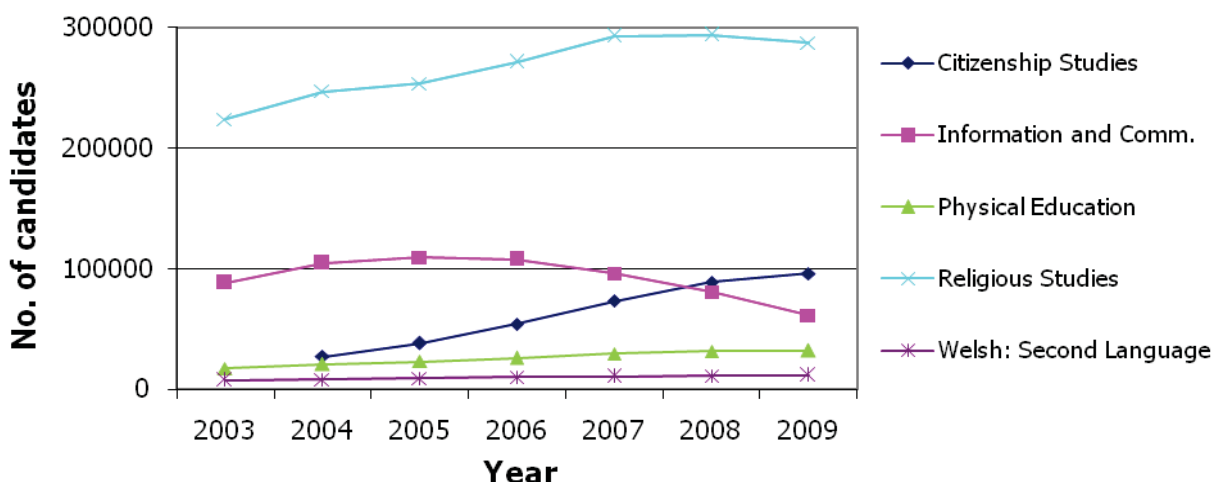


Table G Top GCSE short course subject increases (of those with more than 1.0% of entry)

Subject (2008 ranking in brackets)			Changes from 2008-2009		
			% change	2008 Number of candidates	2009 Number of candidates
1	(1)	Citizenship Studies	8.05	89018	96200
2	(3)	Welsh: Second Language	2.21	11238	11486
3	(2)	Physical Education	1.19	31697	32073

Chart 9

Top GCSE short course subject increases (subjects with more than 1.0% of the entry)

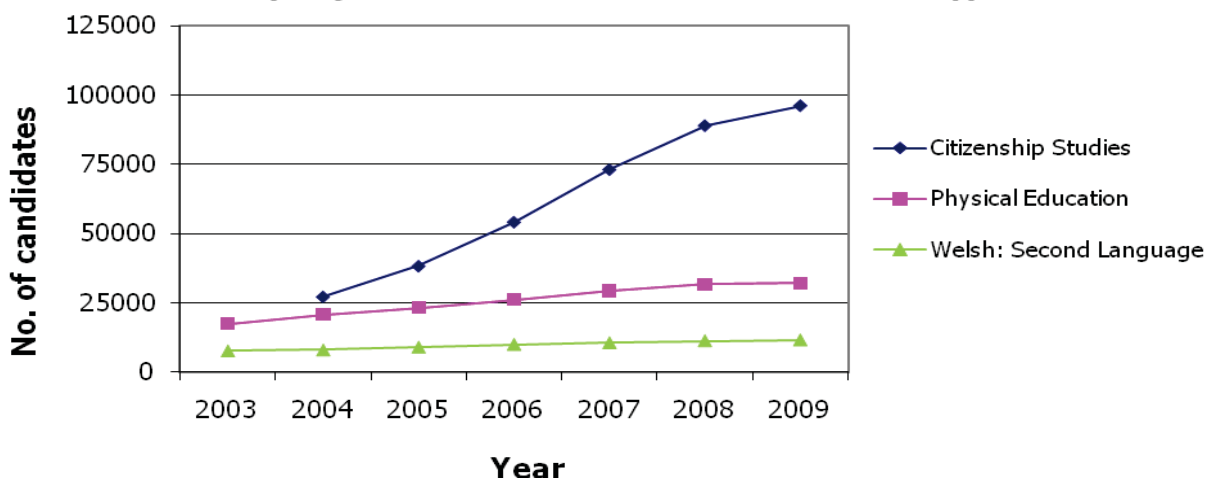
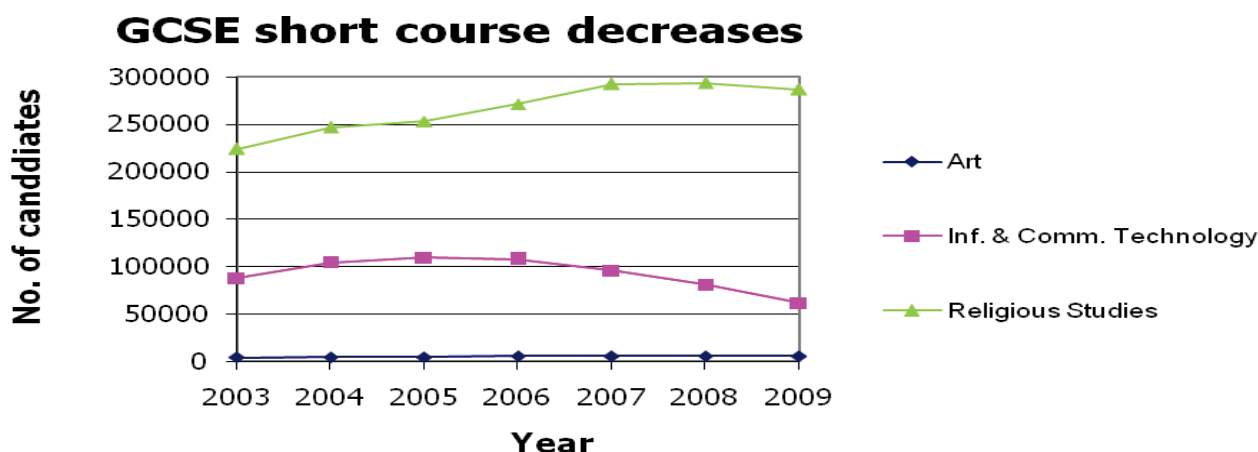


Table H Top GCSE short course subject decreases

Subject		Changes from 2008-2009			
		% change	2008 Number of candidates	2009 Number of candidates	
(2008 ranking in brackets)					
1	(4)	Information and Communication Technology	-23.99	293756	286941
2		Religious Studies	-2.32	80840	61443
3		Art	-1.33	5625	5550

Chart 10

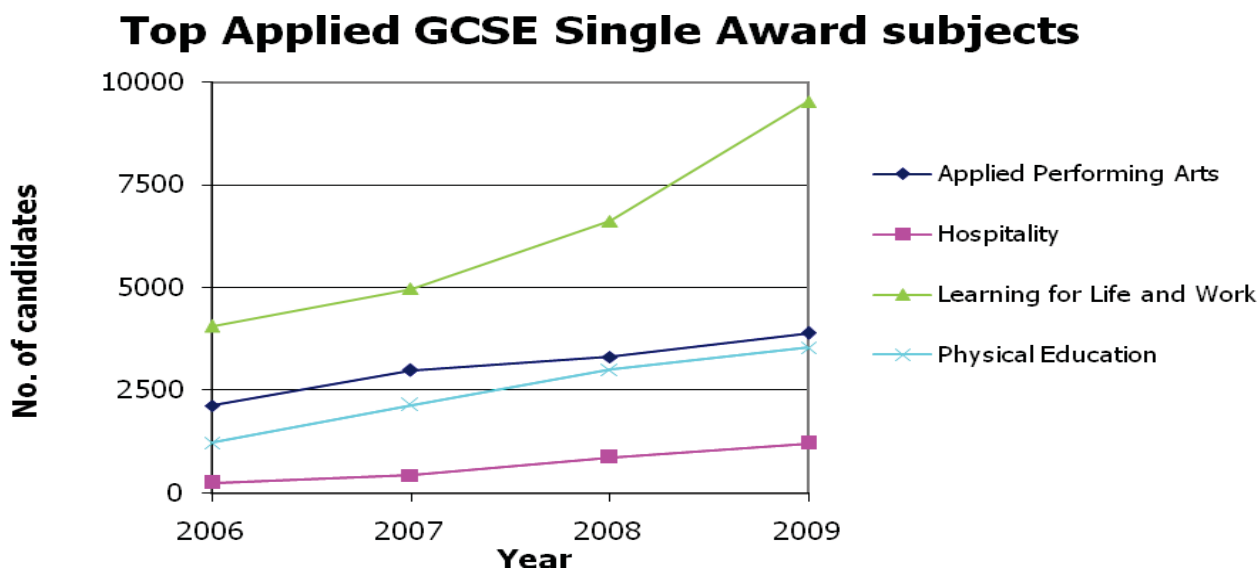


Applied GCSE Single Award trends

Table L Top Applied GCSE Single Award subjects

Subject		2009		
		% of total	Number of candidates	
(2008 ranking in brackets)				
1	(1)	Learning for Life and Work	46.50	9525
2	(2)	Applied Performing Arts	19.03	3898
3	(3)	Physical Education	17.27	3538
4		Hospitality	5.91	1211

Chart 14



Applied GCSE Double Award trends

Table I Top Applied GCSE Double Award subjects

Subject (2008 ranking in brackets)		2009	
		% of total	Number of candidates
1	(1) Health & Social Care	24.47	23523
2	(2) Applied Science	21.43	20596
3	(3) Applied Business	15.89	15272
4	(5) Leisure & Tourism	10.57	10161
5	(4) Applied ICT	9.53	9158

Chart 11

Top Applied GCSE Double Award subjects

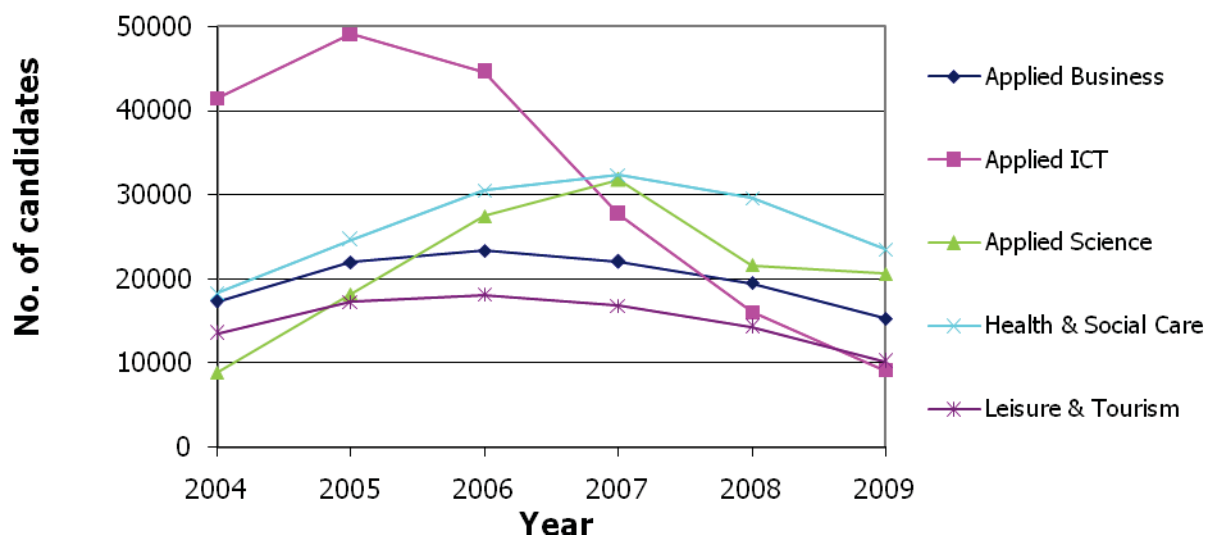


Table J Top Applied GCSE Double Award subject increases

Subject (2008 ranking in brackets)		Changes from 2008-2009		
		% change	2008 Number of candidates	2009 Number of candidates
1	(1) Media	36.32	234	319
2	(2) Hospitality	34.43	334	449

Chart 12

Applied GCSE Dble Awd subject increases

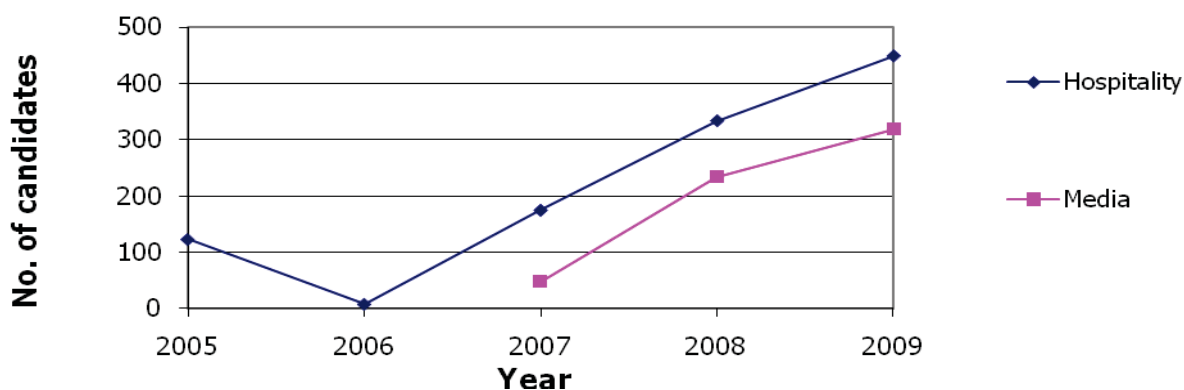
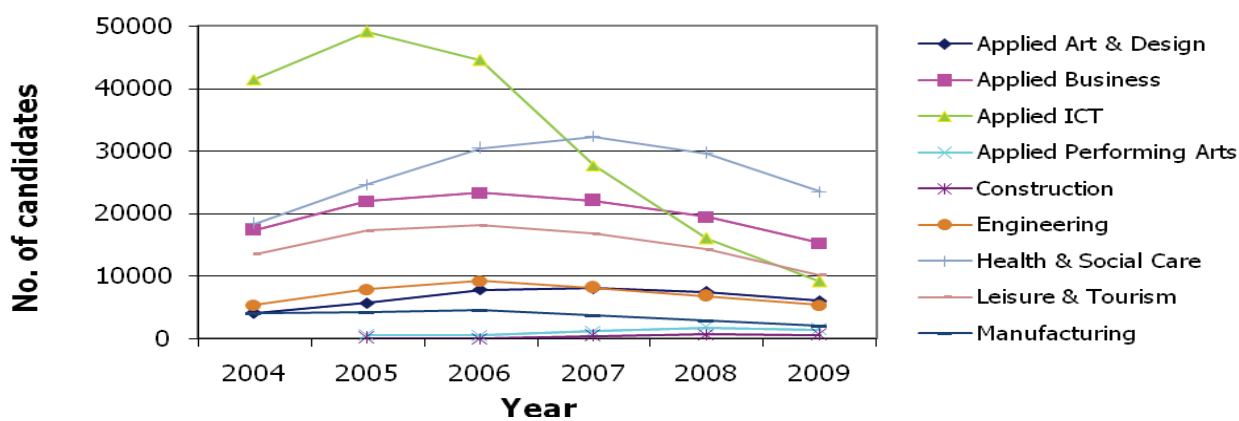


Table K Top Applied GCSE Double Award subject decreases

Subject (2008 ranking in brackets)		Changes from 2008-2009		
		% change	2008 Number of candidates	2009 Number of candidates
1	(1) Applied ICT	-42.98	16062	9158
2	(3) Manufacturing	-30.86	2881	1992
3	Leisure & Tourism	-28.77	14265	10161
4	(5) Applied Business	-21.73	19512	15272
5	(4) Engineering	-21.01	6831	5396
6	Health & Social Care	-20.54	29604	23523
7	Applied Performing Arts	-19.58	1752	1409
8	Applied Art & Design	-19.06	7524	6090
9	Construction	-16.89	687	571

Chart 13

Applied GCSE Dble Awd subject decreases



Entry Level trends

Table M Top Entry Level subjects

Subject (2008 ranking in brackets)		2009	
		% of total	Number of candidates
1	(1) English	17.64	20321
2	(2) Mathematics	13.14	15138
3	(3) Science Single Award	10.96	12624
4	(4) Physical Education	10.51	12107
5	Religious Studies	8.16	9406
6	(5) ICT	7.41	8542

Chart 15

Top Entry Level subjects

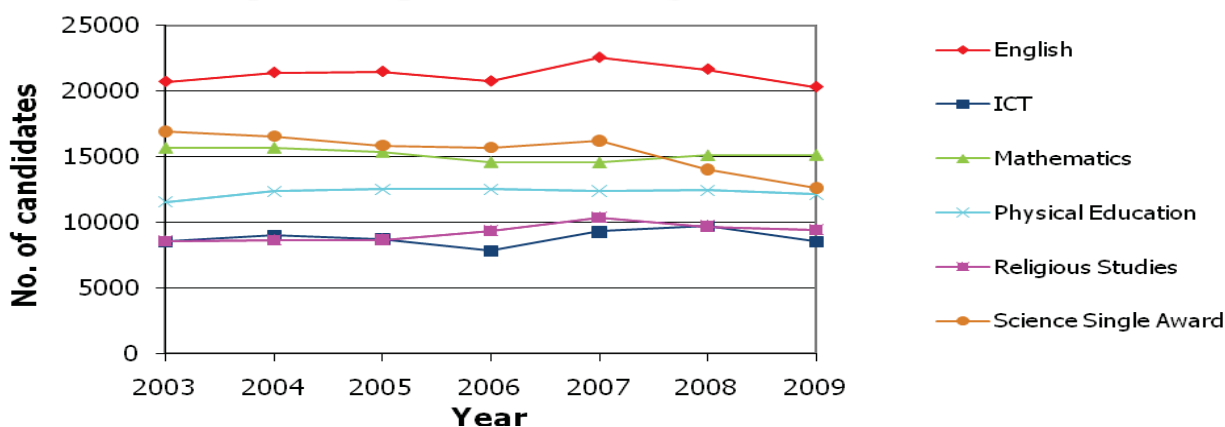


Table N Top Entry Level increases

Subject		Changes from 2008-2009		
		% change	2008 Number of candidates	2009 Number of candidates
(2008 ranking in brackets)				
1	(1) Other Modern Languages	136.31	168	397
2	(3) Media	38.22	348	481
3	Business Studies	38.04	1304	1800
4	Social Science subjects	14.09	2577	2577
5	History	11.17	2848	3166

Chart 16

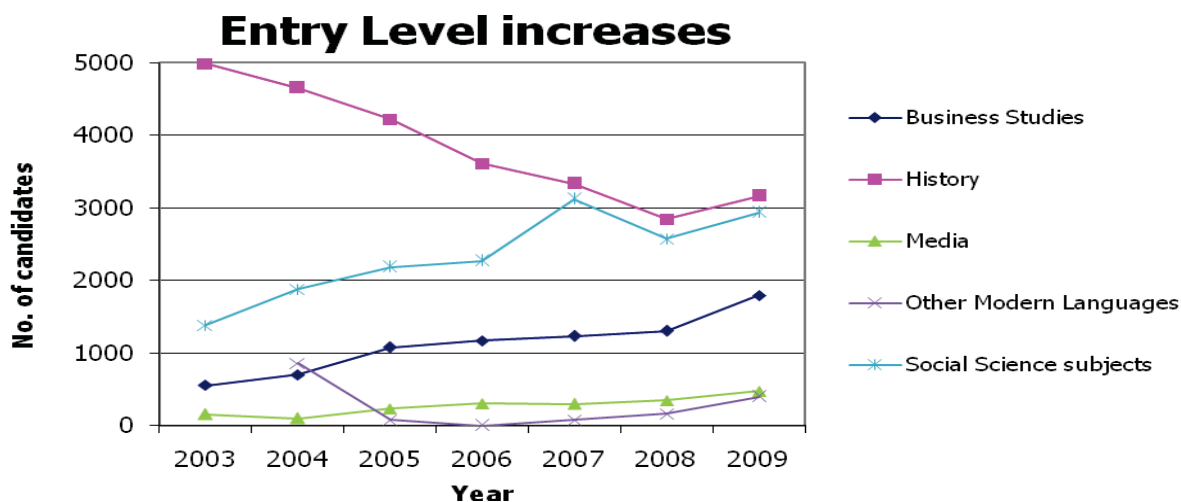


Table O Top 4 Entry Level decreases

Subject		Changes from 2008-2009		
		% change	2008 Number of candidates	2009 Number of candidates
(2008 ranking in brackets)				
1	(3) French	-19.06	7465	6042
2	Music	-17.41	425	351
3	German	-16.05	2306	1936
4	Spanish	-14.73	3639	3103
5	Information and Communication Technology	-11.97	9703	8542
6	(5) Science Single Award	-10.17	14053	12624

Chart 17

