

TABLES – GCSE, Project and Entry Level Trends, 2012

GCSE Full Course trends

Chart 1 Total entry for GCSE full course subjects

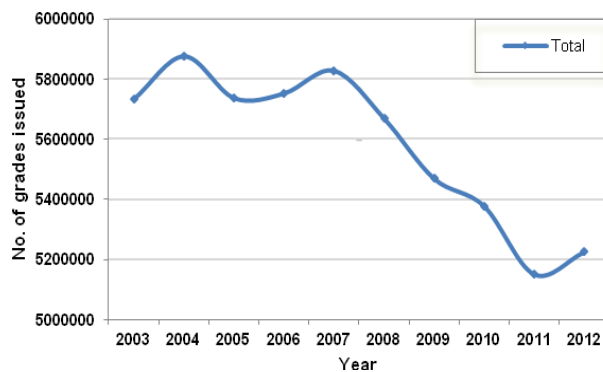


Chart 2 Cohort Size

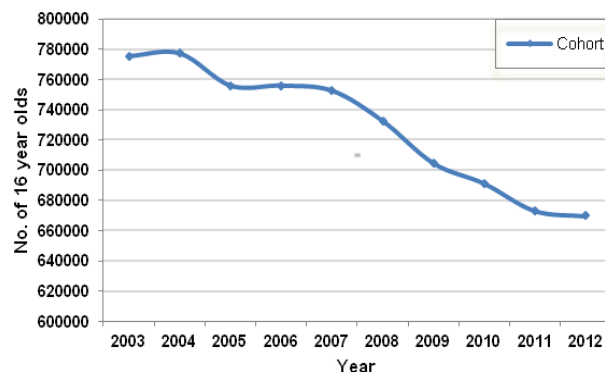


Table A Top ten GCSE full course subjects in 2012

Rank	Subject	% of total	Number of candidates
1 (1)	Mathematics	12.93	675789
2 (2)	English	12.81	669534
3 (4)	Science	10.57	552504
4 (3)	English Literature	8.96	468196
5 (5)	Additional Science	5.55	289950
6 (6)	Design & Technology	4.61	240704
7 (7)	Religious Studies	4.58	239123
8 (8)	History	4.27	222983
9 (10)	Geography	3.58	187022
10 (9)	Art and Design subjects	3.42	178895

(2011 ranking in brackets)

Chart 3 Top ten GCSE full course subjects as a percentage of the total entry over the period 2002 to 2012

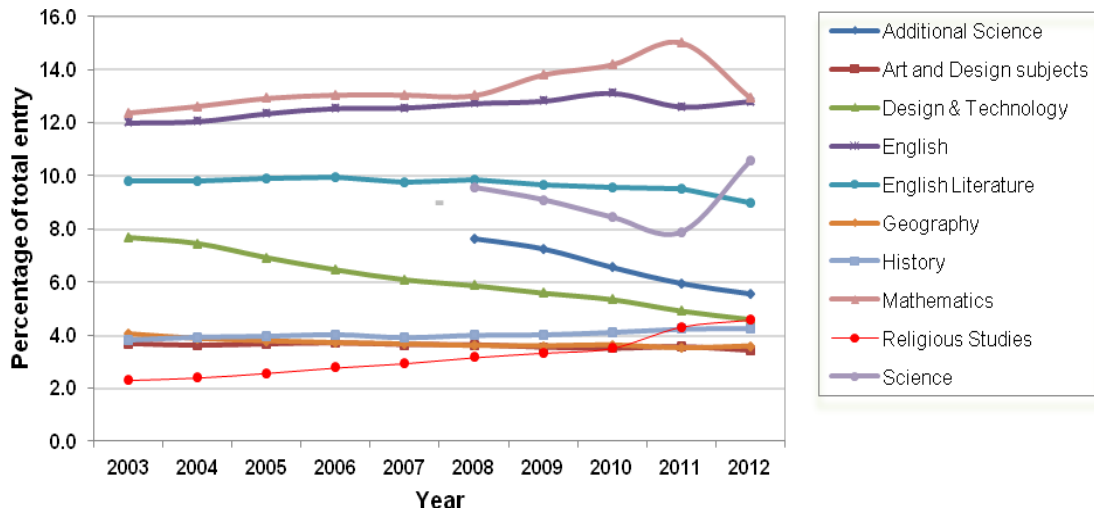


Table B Top GCSE full course subject increases (entry greater than 100,000) (Changes from 2011-2012)

Rank	Subject	% change	2011 Number of candidates	2012 Number of candidates
1	Science	36.09	405977	552504
2 (4)	Biology	12.35	147904	166168
3 (3)	Chemistry	12.28	141724	159126
4 (2)	Physics	12.27	140183	157377
5 (1)	Religious Studies	7.73	221974	239123
6	Geography	3.48	180737	187022
7	English	3.08	649553	669534
8	History	2.01	218588	222983

(2011 ranking in brackets. Subjects having a year-on-year decrease in 2011 are shown as blank.)

NB Science includes the legacy and new GCSE Science specifications. The new specifications entirely account for the year-on-year increase.

Chart 4 Top GCSE full course subject increases, 2012 (entry greater than 100,000)

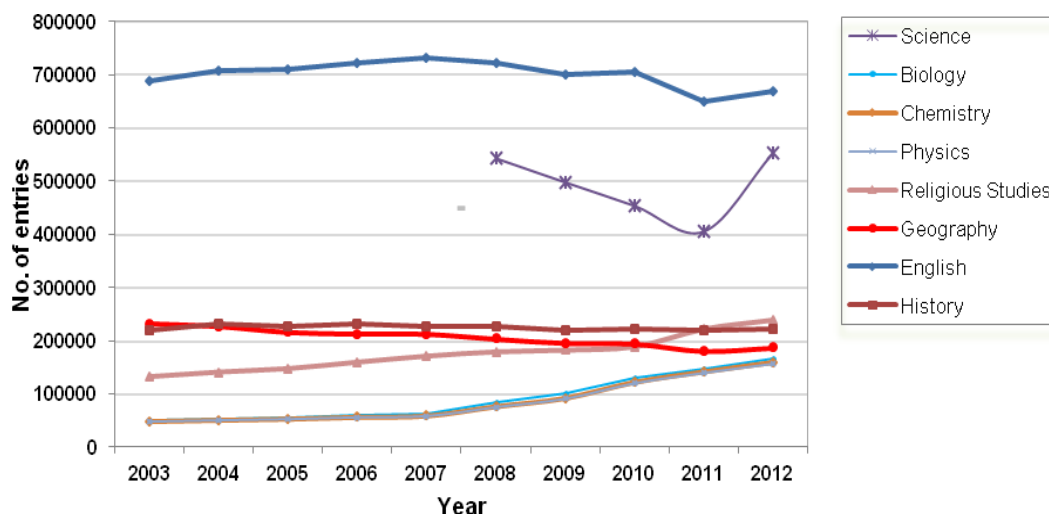


Table C Top GCSE full course subject increases (entry less than 100,000)
(Changes from 2011-2012)

Rank	Subject	% change	2011 Number of candidates	2012 Number of candidates
1	Hospitality	43.14	1275	1825
2	-	18.35	9279	10982
3	-	15.03	1850	2128
4	Other Modern Languages	13.66	26257	29843
5	ICT	12.88	47128	53197
6	Spanish	9.97	66021	72606
7	(2) Social Science subjects	8.70	34905	37940
8	Classical subjects	6.96	14272	15265

(2011 ranking in brackets. Subjects having a year-on-year decrease in 2011 are shown as blank. “-“ denotes not available in previous year.)

Chart 5 Top GCSE full course subject increases, 2012 (entry less than 100,000)

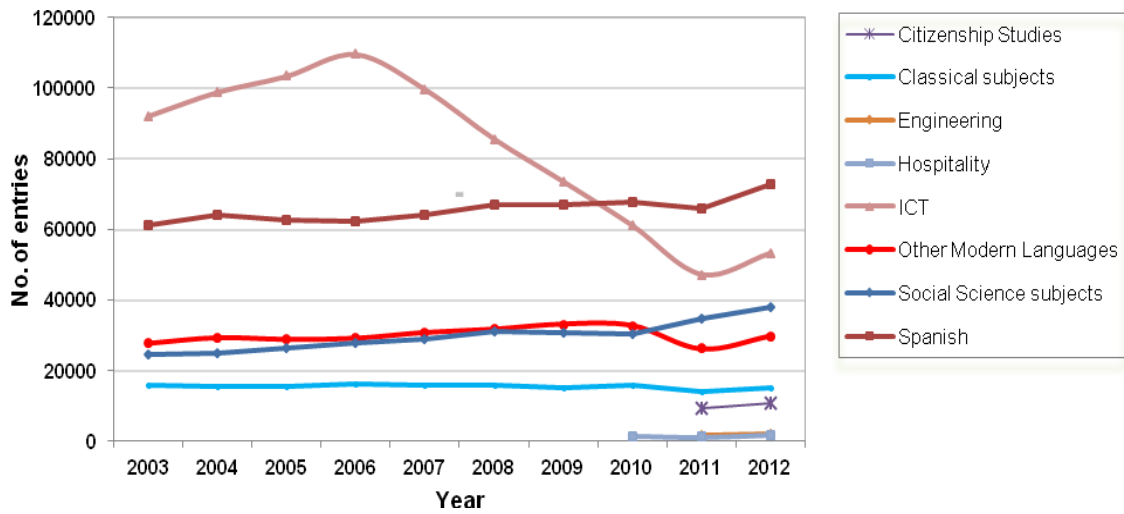


Table D GCSE full course subject decreases (entry greater than 100,000)
(Changes from 2011-2012)

Rank	Subject	% change	2011 Number of candidates	2012 Number of candidates
1	Mathematics	-12.57	772944	675789
2	(1) Physical Education	-6.26	108369	101580
3	(3) Additional Science	-5.34	306312	289950
4	(4) Design & Technology	-5.09	253624	240704
5	(8) English Literature	-4.46	490056	468196

(2011 ranking in brackets. Subjects having a year-on-year increase in 2011 are shown as blank.)

Chart 6 Top GCSE full course subject decreases, 2012 (entry more than 100,000)

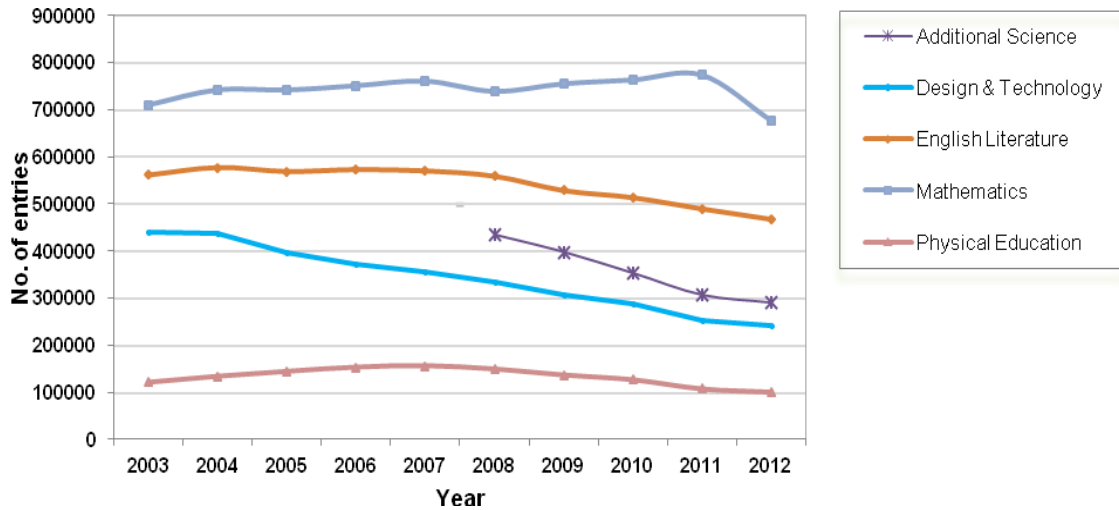
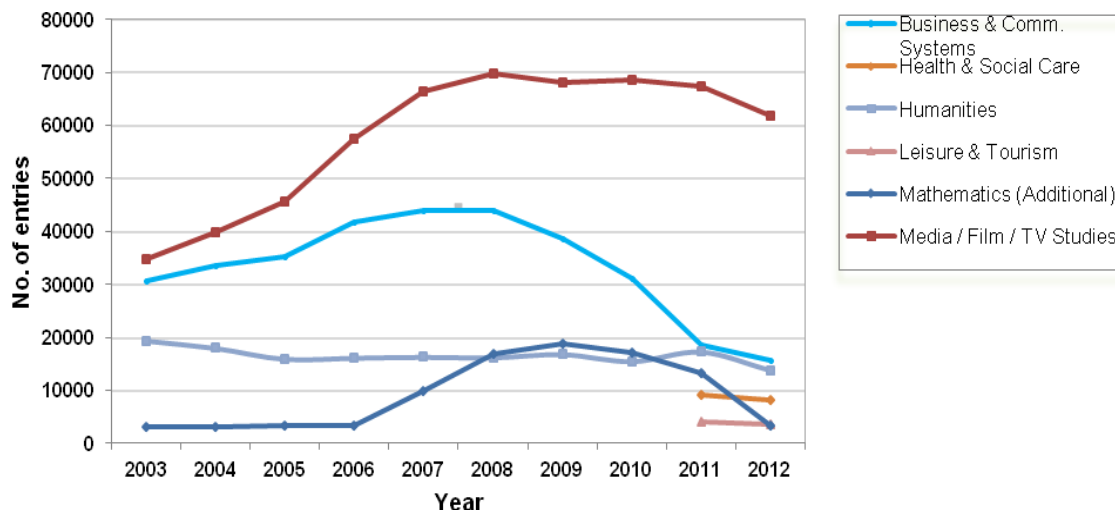


Table E GCSE full course subject decreases (entry less than 100,000)
(Changes from 2011-2012)

Rank	Subject	% change	2011 Number of candidates	2012 Number of candidates
1 (4)	Mathematics (Additional)	-74.13	13282	3436
2	Humanities	-20.24	17279	13782
3 (1)	Business & Comm. Systems	-16.29	18639	15603
4 -	Leisure & Tourism	-11.39	3987	3533
5 -	Health & Social Care	-10.99	9187	8177
6 (22)	Media / Film / TV Studies	-8.53	67433	61680

(2011 ranking in brackets. Subjects having a year-on-year increase in 2011 are shown as blank. "-" denotes not available in previous year.)

Chart 7 Top GCSE full course subject decreases, 2012 (entry less than 100,000)



GCSE Short Course trends

Table F Top GCSE short course subjects in 2012

Rank	Subject	% of total	Number of candidates
1 (1)	Religious Studies	63.53	235916
2 (2)	Citizenship Studies	17.31	64279
3 (4)	Physical Education	4.53	16827
4 (3)	Information and Comm.	4.10	15223
5 (5)	Welsh: Second Language	3.69	13685

(2011 ranking in brackets)

Chart 8 Top ten GCSE short course subjects as a percentage of the total entry over the period 2002 to 2012

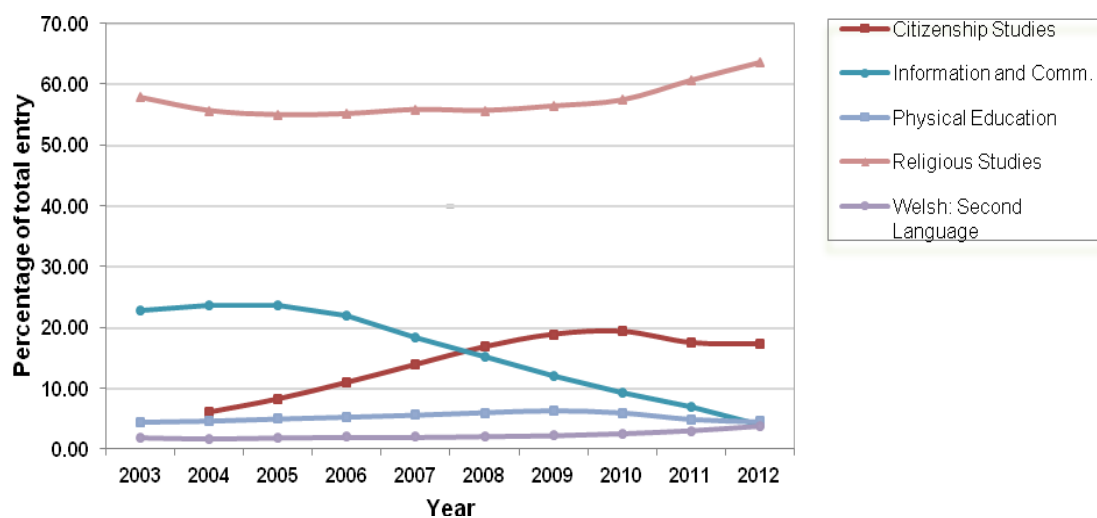


Table G Top GCSE short course subject increases (Changes from 2011-2012)

Rank	Subject	% change	2011 Number of candidates	2012 Number of candidates
1 (1)	Other modern languages	9.66	1874	2055
2 (7)	Social Science Subjects	7.63	3475	3740
3 (8)	Welsh: Second Language	7.05	12784	13685
4 (2)	Economics	4.11	1240	1291
5 (4)	Classical Subjects	2.48	1131	1159

(2011 ranking in brackets)

Chart 9 Top GCSE short course subject increases, 2012

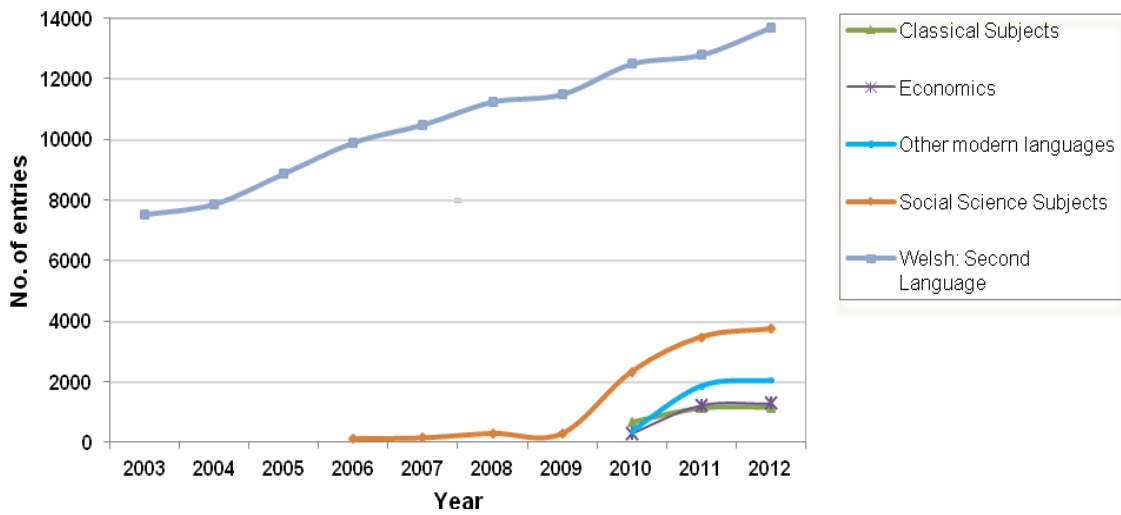
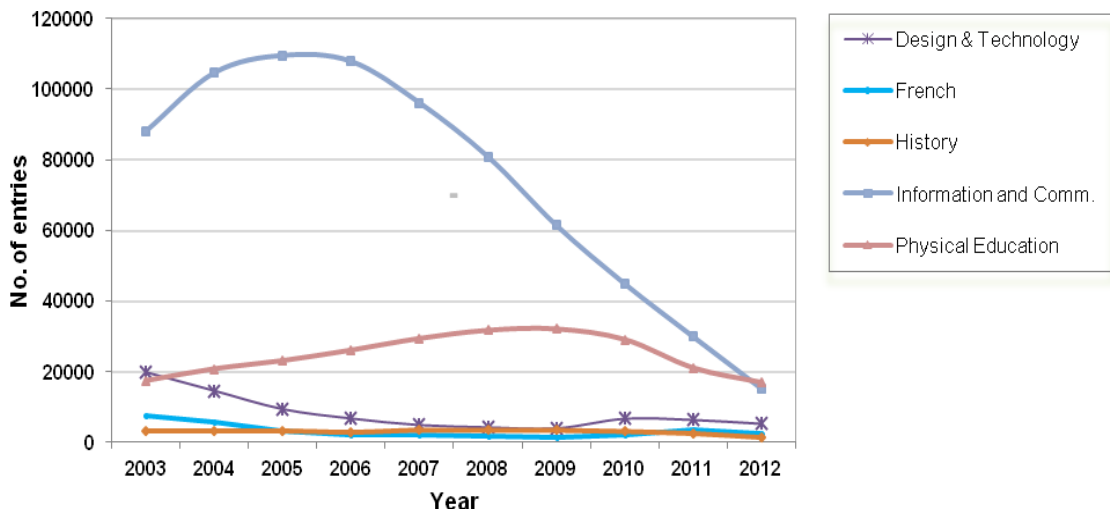


Table H Top GCSE short course subject decreases (Changes from 2011-2012)

Rank	Subject	% change	2011 Number of candidates	2012 Number of candidates
1 (1)	Information and Comm.	-49.14	29931	15223
2 (6)	History	-48.17	2518	1305
3	French	-31.16	3700	2547
4 (3)	Physical Education	-19.82	20986	16827
5 (8)	Design & Technology	-16.80	6417	5339

(2011 ranking in brackets. Subjects having a year-on-year increase in 2011 are shown as blank.)

Chart 10 Top GCSE short course subject decreases, 2012



GCSE Double Award trends

Table I Top GCSE double award subjects in 2012

Rank	Subject	% of total	Number of candidates
1 (1)	Science	23.27	9679
2 (3)	Science: Dbl Awd	17.95	7469
3 (2)	Health & Social Care	16.26	6766
4 (4)	Business	9.13	3799
5 (5)	Media	7.29	3033

(2011 ranking in brackets)

Chart 11 Top GCSE double award subjects as a percentage of the total entry over the period 2002 to 2012

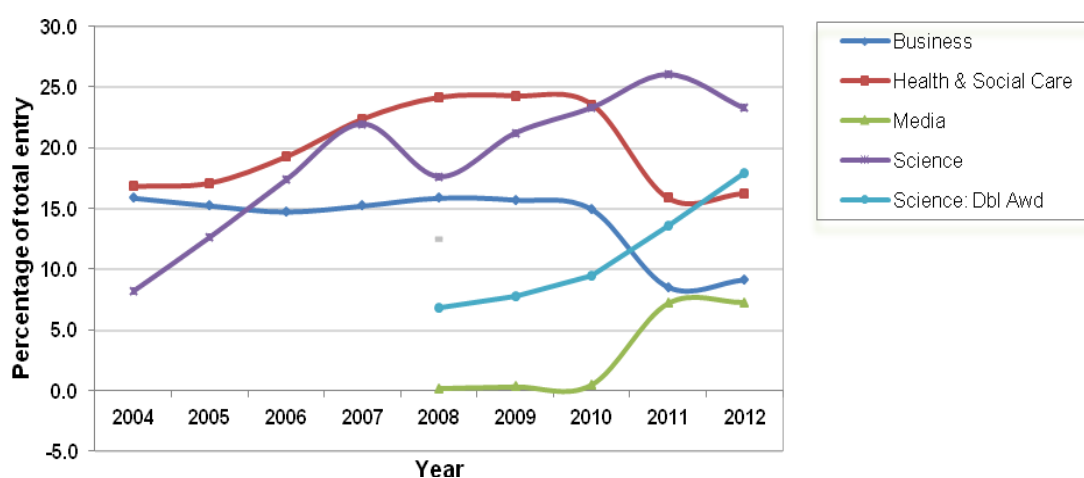


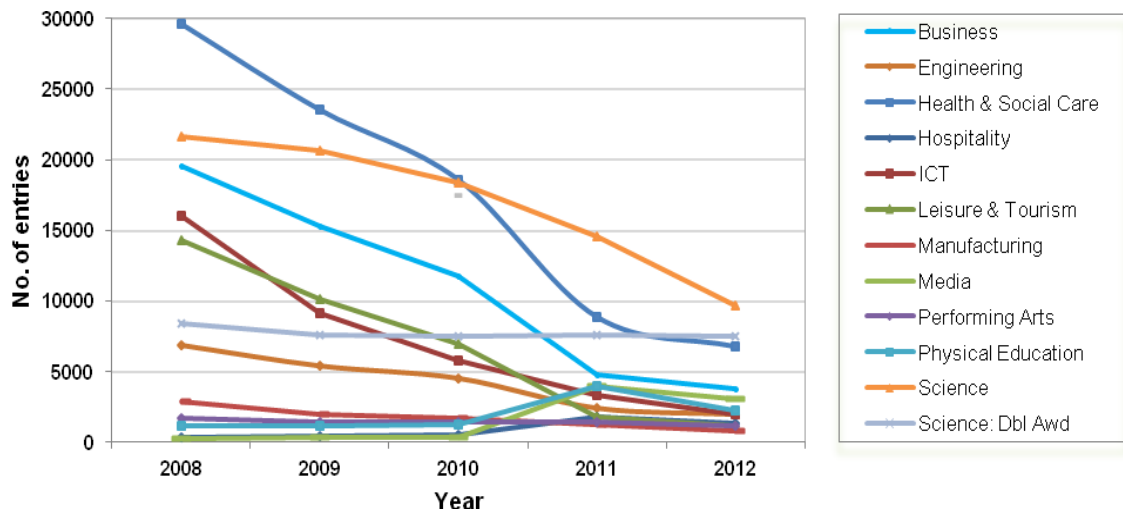
Table J GCSE double award subject decreases (Changes from 2011-2012)

Rank	Subject	% change	2011 Number of candidates	2012 Number of candidates
1	Physical Education	-41.79	3953	2301
2 (5)	ICT	-40.94	3383	1998
3 (1)	Leisure & Tourism	-34.20	1760	1158
4 (6)	Manufacturing	-33.68	1268	841
5 (7)	Science	-33.46	14547	9679
6	Hospitality	-25.20	1790	1339
7	Media	-24.48	4016	3033
8 (3)	Health & Social Care	-23.69	8867	6766
9 (2)	Business	-20.19	4760	3799
10 (4)	Engineering	-17.91	2457	2017
11 (8)	Performing Arts	-15.31	1417	1200
12	Science: Dbl Awd	-1.75	7602	7469

(2011 ranking in brackets. Subjects having a year-on-year increase in 2011 are shown as blank.)

NB There are no GCSE double award year-on-year increases in 2012.

Chart 12 GCSE double award subject decreases, 2012 (All subjects)



Entry Level trends

Table K Top Entry Level subjects in 2012

Rank	Subject	% of total	Number of candidates
1 (2)	Mathematics	16.07	12003
2 (1)	English	15.75	11765
3 (3)	Science	11.18	8354
4 (4)	Physical Education	10.14	7573
5 (5)	Religious Studies	9.90	7395

(2011 ranking in brackets)

Chart 13 Top Entry Level subjects as a percentage of the total entry over the period 2002 to 2012

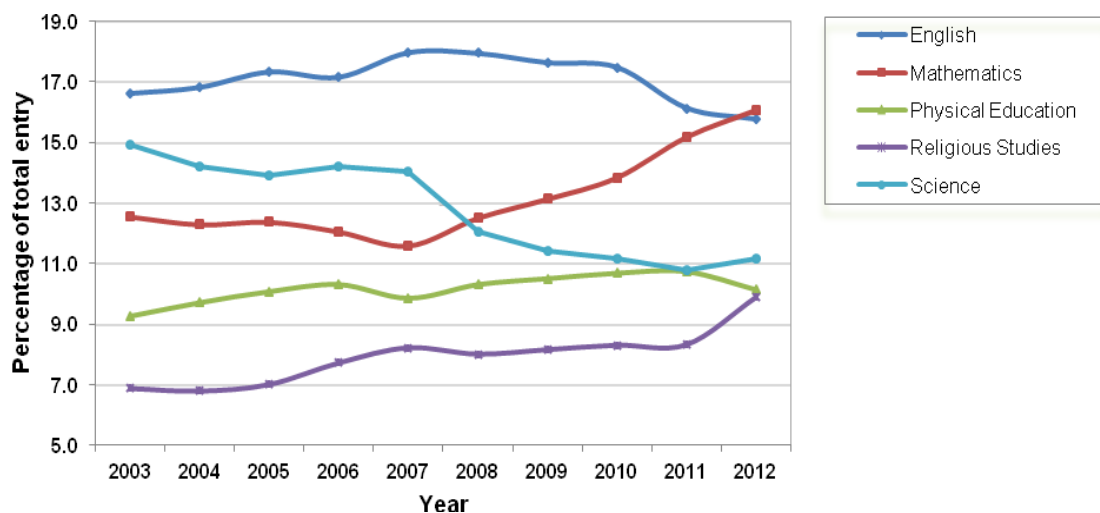


Table L Entry Level subject increases (Changes from 2011-2012)

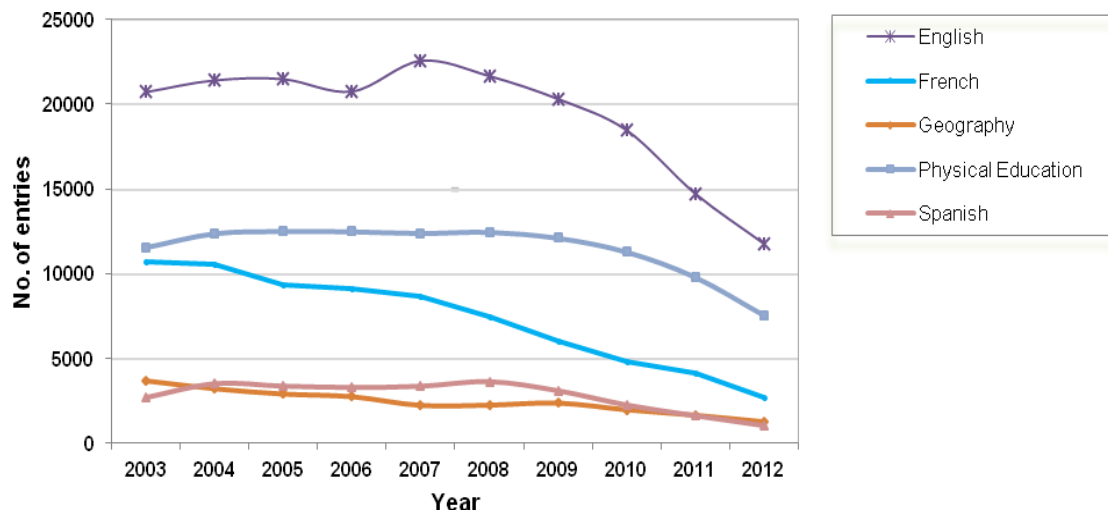
Subject	% change	2011 Number of candidates	2012 Number of candidates
Classical Subjects	89.92	605	1149

Table M Top Entry Level subject decreases (Changes from 2011-2012)

Rank	Subject	% change	2011 Number of candidates	2012 Number of candidates
1 (2)	Spanish	-35.81	1631	1047
2 (8)	French	-34.23	4178	2748
3 (5)	Geography	-24.41	1643	1242
4 (10)	Physical Education	-22.78	9807	7573
5 (4)	English	-20.08	14721	11765

(2011 ranking in brackets)

Chart 14 Top Entry Level subjects decreases, 2012



Project Trends

Table N Changes from 2011-2012

Subject	% change	2011 Number of candidates	2012 Number of candidates
Level 1 Project	-29.3	4872	3445
Level 2 Project	-4.0	21888	21007