

## GCE A-level trends

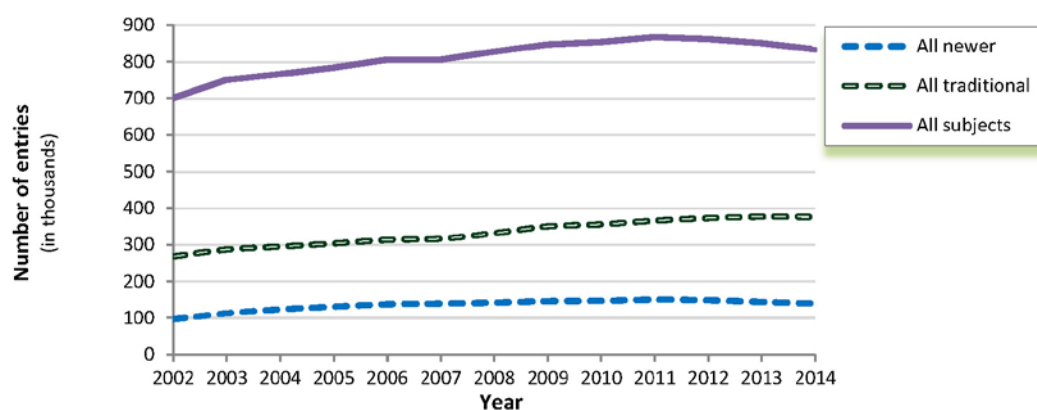
**Figure 1 Traditional vs. newer subjects – A-level (2002 - 2014)**

**Traditional subjects are:**

Art & Design  
Classical Subjects  
Economics  
English  
Geography  
History  
Mathematics  
Mathematics (Further)  
Religious Studies

**Newer subjects are:**

Law  
Media/Film/TV Studies  
Political Studies  
Psychology  
Sociology

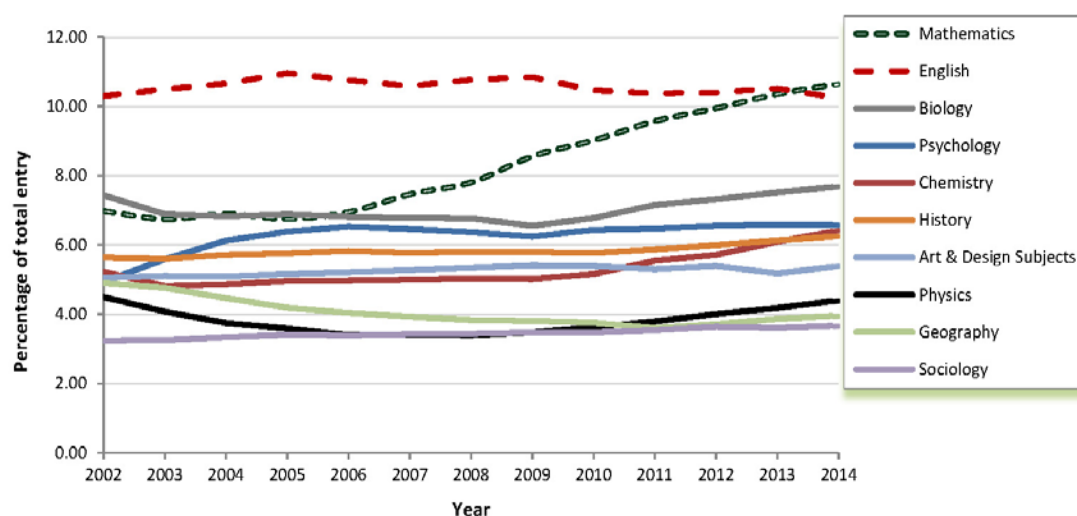


**Table 1 Top GCE A-level subjects in 2014 by entry**

Ranking		Subject	% of total	Number of candidates
1	(2)	Mathematics	10.65	88816
2	(1)	English	10.23	85336
3	(3)	Biology	7.68	64070
4	(4)	Psychology	6.57	54818
5	(6)	Chemistry	6.42	53513
6	(5)	History	6.25	52131
7	(7)	Art and Design Subjects	5.39	44922
8	(8)	Physics	4.40	36701
9	(9)	Geography	3.96	33007
10	(11)	Sociology	3.67	30594

(2013 ranking in brackets)

**Figure 2 Top ten A-level subjects as a percentage of the total entry over the period 2002 to 2014**

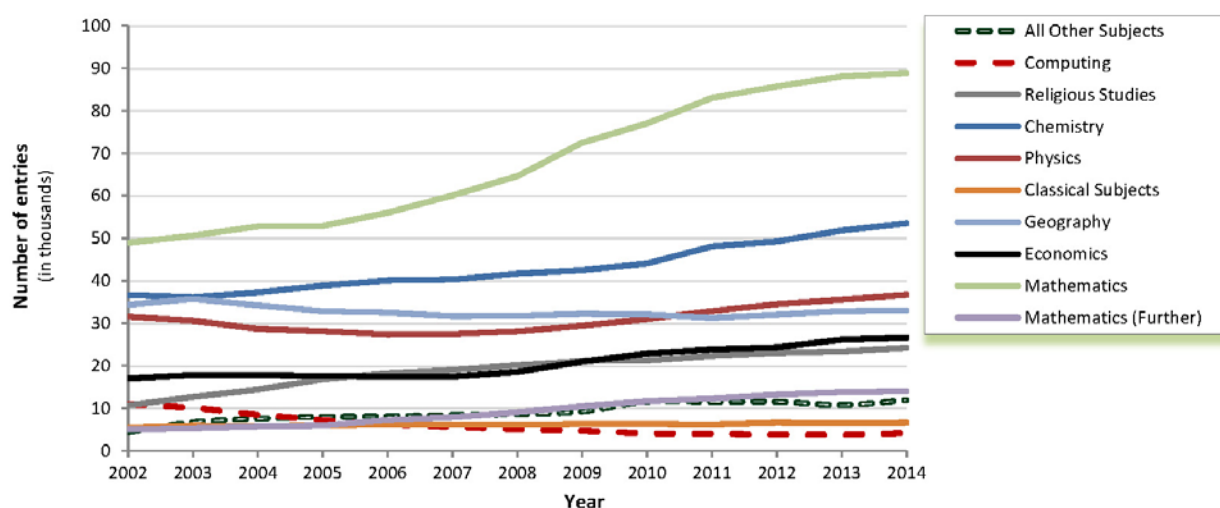


Mathematics takes over from English as the highest entry subject. Chemistry in 5<sup>th</sup> place, assumes its highest ranking over the period 2002-2014. General Studies moves out of the top 10 for the first time over the period 2002-14.

**Table 2 Top GCE A-level subject increases** (changes from 2013-2014)

Ranking	Subject	% change	2013 Number of candidates	2014 Number of candidates
1	All Other Subjects	11.1	10746	11936
2	Computing	11.0	3758	4171
3 (11)	Religious Studies	3.7	23354	24213
4 (2)	Chemistry	3.3	51818	53513
5 (5)	Physics	3.2	35569	36701
6	Classical Subjects	2.7	6443	6615
7 (1)	Economics	1.8	26139	26612
8 (3)	Mathematics (Further)	1.5	13821	14028
9 (7)	Mathematics	0.9	88060	88816
10 (8)	Geography	0.4	32872	33007

(2013 ranking in brackets. Subjects over 500 candidates shown. Subjects having a year-on-year decrease in 2013 are shown as blank.)

**Figure 3 Top GCE A-level subject increases, 2014****Table 3 GCE A-level subject decreases** (changes from 2013-2014)

Ranking	Subject	% change	2013 Number of candidates	2014 Number of candidates
1 (5)	Critical Thinking	-46.6	990	529
2 (6)	General Studies	-24.3	31562	23884
3 (3)	Physical Education	-11.6	14441	12760
4	Political Studies	-10.6	15393	13761
5 (14)	ICT	-9.0	10419	9479
6 (4)	Performing / Expressive Arts	-8.5	2782	2546
7 (16)	Law	-8.0	12523	11517
8 (3)	Welsh	-8.0	752	692
9 (8)	French	-7.4	11272	10433
10 (11)	Drama	-5.7	13864	13080

(2013 ranking in brackets. Subjects having a year-on-year increase in 2013 are shown as blank.)

Figure 4 Top GCE A-level subject decreases, 2014

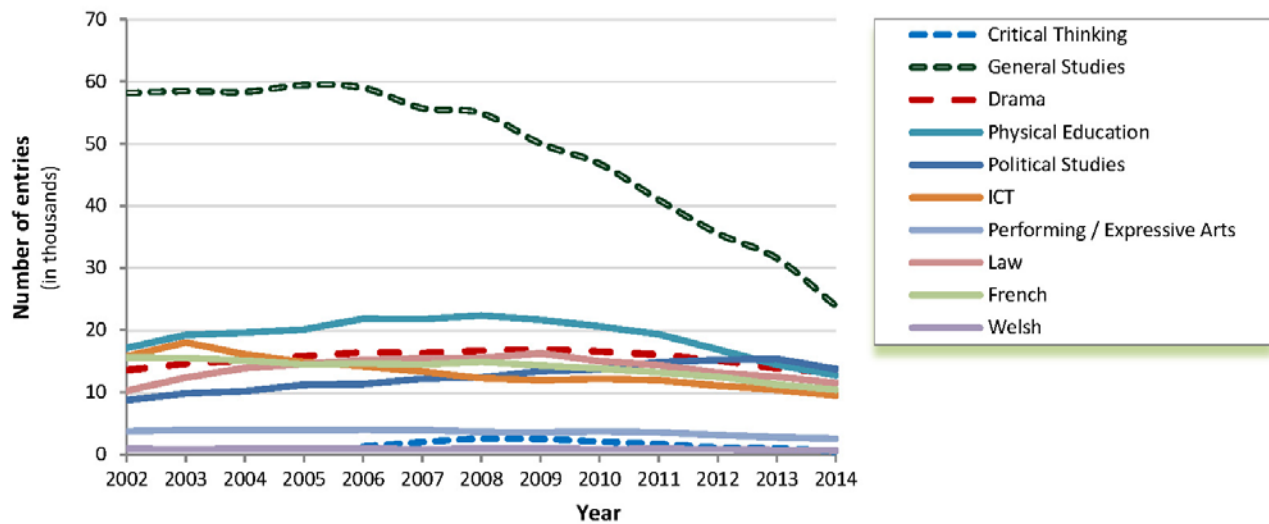


Figure 5 GCE A-level Sciences, 2014

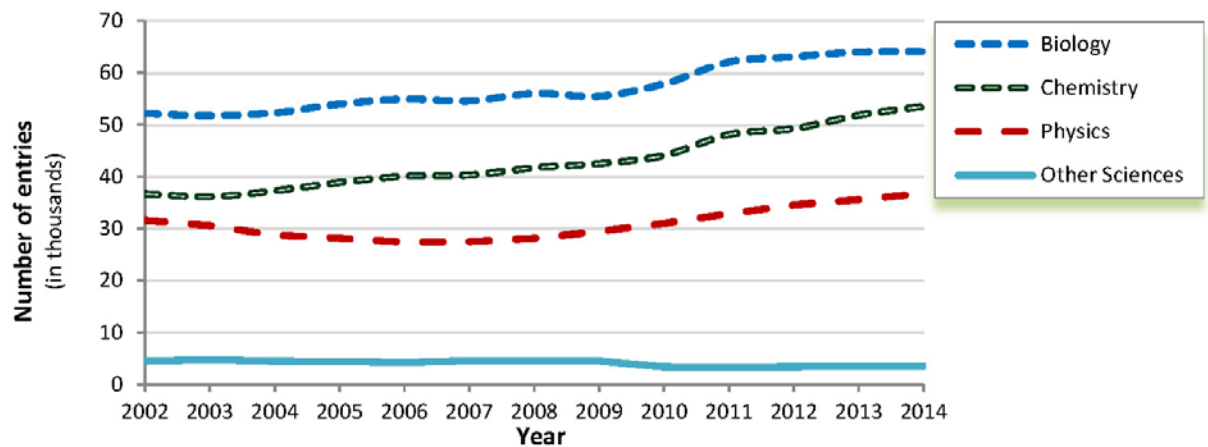
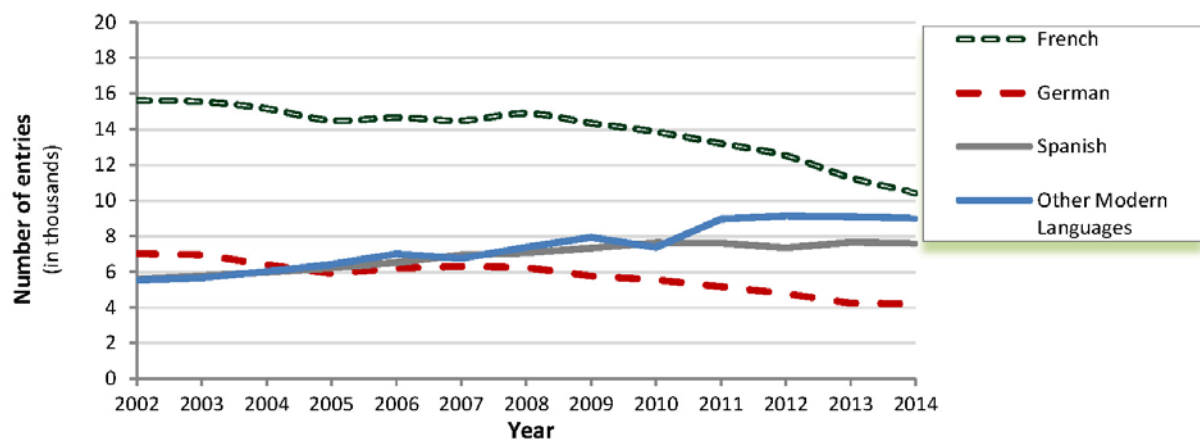


Figure 6 GCE A-level Languages, 2014



## GCE AS trends

Figure 7 Traditional vs. Newer subjects – AS (2002 - 2014)

### Traditional subjects are:

Art & Design  
Classical Subjects  
Economics  
English  
Geography  
History  
Mathematics  
Mathematics (Further)  
Religious Studies

### Newer subjects are:

Law  
Media/Film/TV Studies  
Political Studies  
Psychology  
Sociology

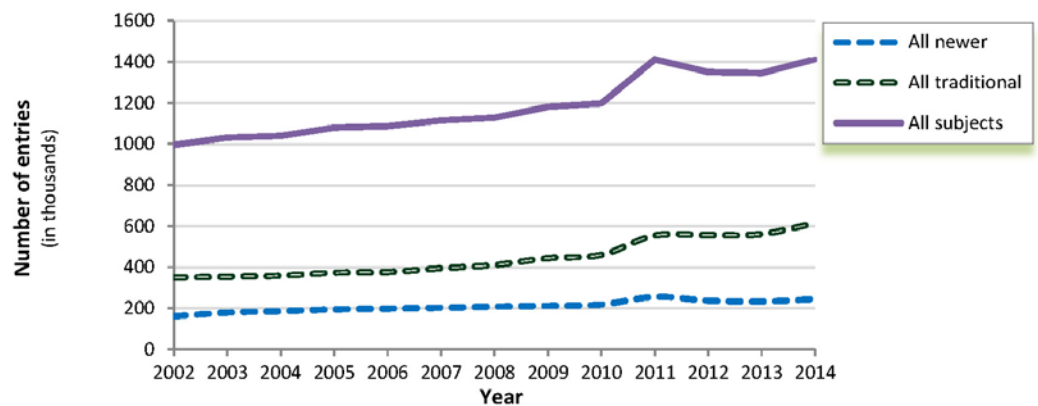


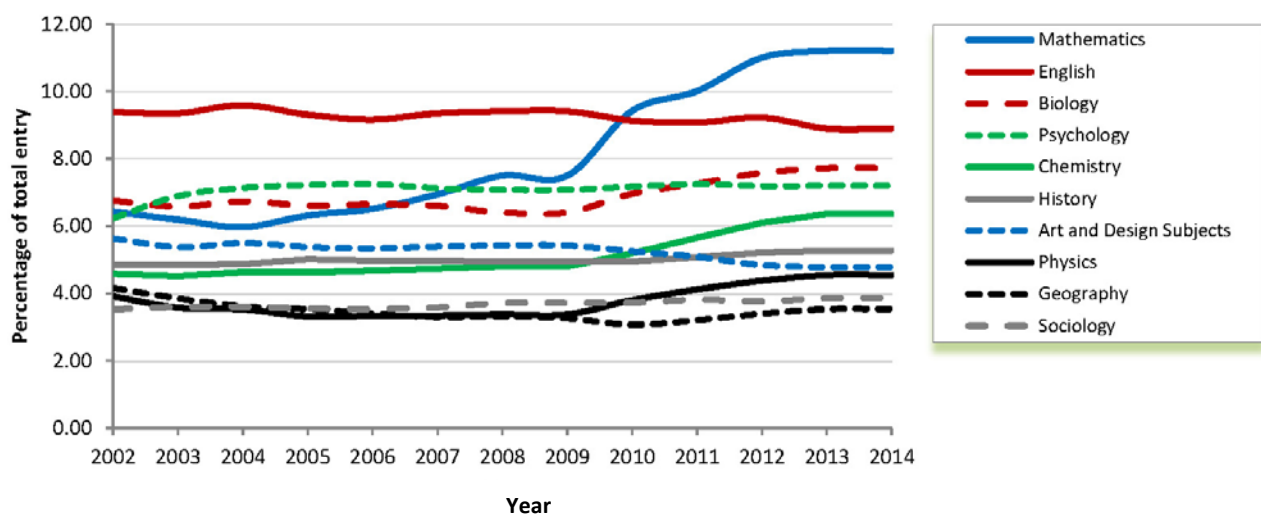
Table 4 Top GCE AS subjects in 2014

Ranking	Subject	% of total	Number of candidates
1 (1)	Mathematics	11.45	161711
2 (2)	English	9.27	131018
3 (3)	Biology	7.45	105251
4 (4)	Psychology	7.21	101859
5 (5)	Chemistry	6.28	88673
6 (6)	History	5.74	81152
7 (7)	Art and Design Subjects	4.67	65960
8 (8)	Physics	4.59	64790
9 (11)	Geography	3.94	55677
10 (10)	Sociology	3.92	55440

(2013 ranking in brackets)

General Studies is replaced by Geography in the top ten rankings. All other rankings remain unchanged.

Figure 8 Top ten AS subjects as a percentage of the total entry over the period 2002 to 2014

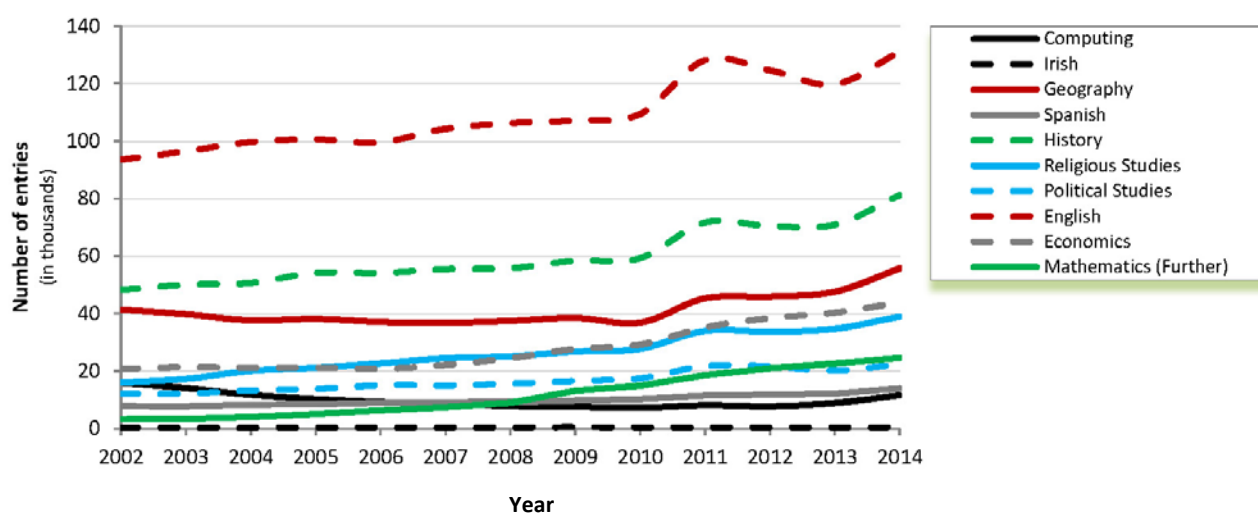


**Table 5 GCE AS subject increases** (changes from 2013-2014)

Ranking	Subject	% change	2013 Number of candidates	2014 Number of candidates
1 (1)	Computing	30.34	8886	11582
2	Irish	23.26	374	461
3 (5)	Geography	17.00	47586	55677
4 (9)	Spanish	15.01	12136	13958
5 (15)	History	14.44	70910	81152
6 (8)	Religious Studies	12.25	34679	38927
7	Political Studies	10.73	20170	22335
8	English	9.42	119736	131018
9 (3)	Economics	8.68	40311	43812
10 (2)	Mathematics (Further)	8.54	22601	24530

(2013 ranking in brackets. Subjects having a year-on-year decrease in 2013 are shown as blank.)

**Figure 9 GCE AS subject increases, 2014**



**Table 6 GCE AS subject decreases** (changes from 2013-2014)

Ranking	Subject	% change	2013 Number of candidates	2014 Number of candidates
1 (1)	Critical Thinking	-27.62	10273	7436
2 (16)	General Studies	-12.94	55573	48380
3 (9)	Music	-4.74	13055	12436
4	All Other Subjects	-3.29	25950	25097
5 (13)	Communication Studies	-2.51	3269	3187
6 (4)	ICT	-2.26	17421	17027
7 (15)	Welsh	-1.74	917	901
8 (20)	Other Sciences	-1.32	6518	6432
9	Art & Design Subjects	-0.25	66123	65960

(2013 ranking in brackets. Subjects having a year-on-year increase in 2013 are shown as blank.)

Figure 10 GCE AS subject decreases, 2014

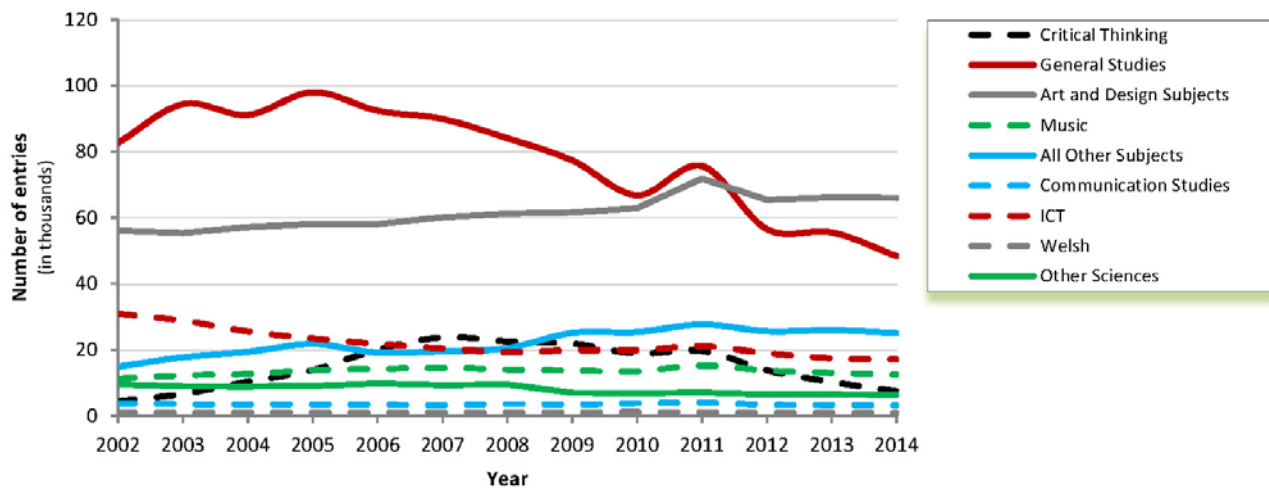


Figure 11 GCE AS Sciences, 2014

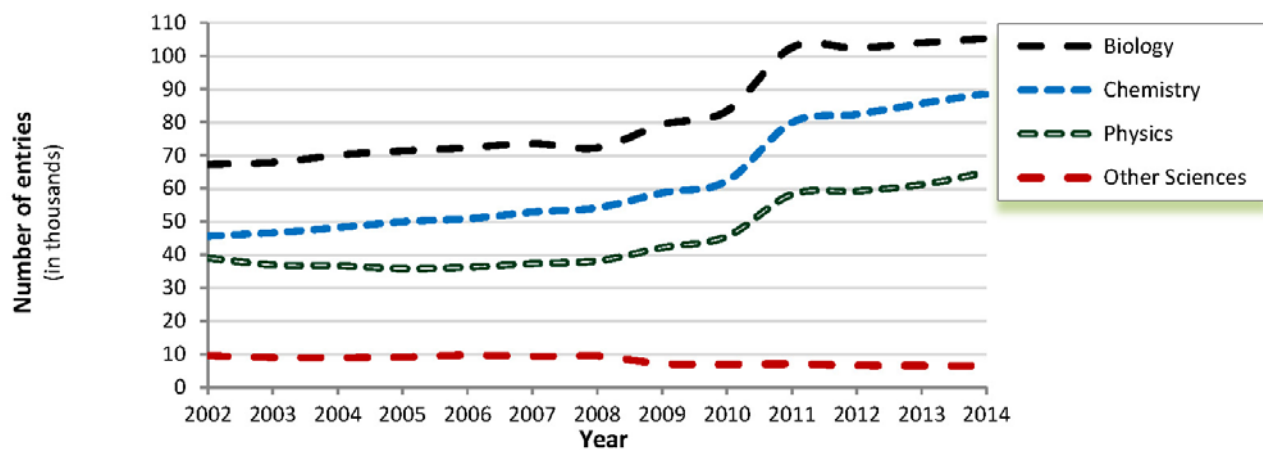
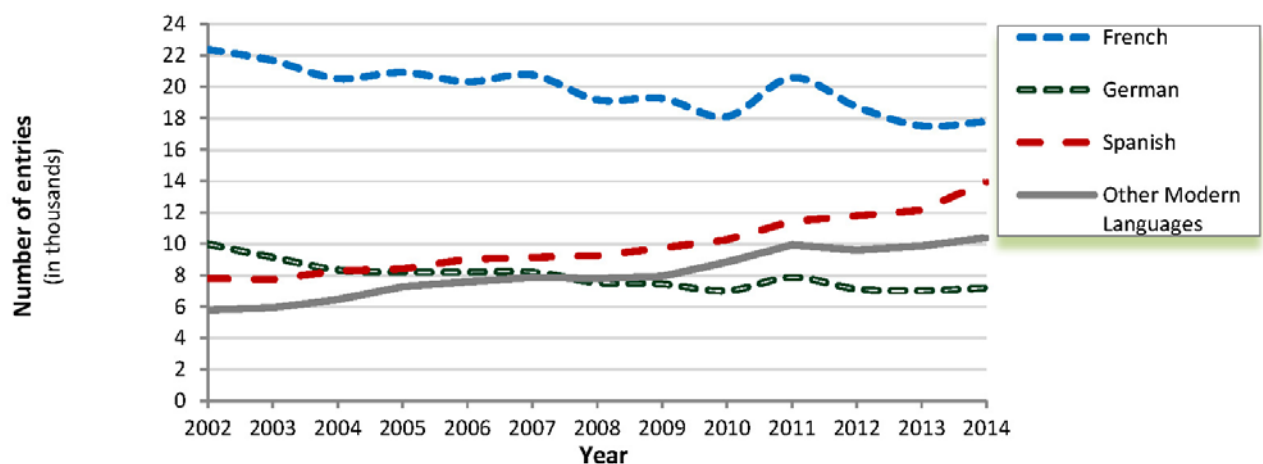


Figure 12 GCE AS Languages, 2014



## Applied GCE trends

**Table 7 All Applied GCE A-level double award subjects, 2014**

Ranking	Subject	% of total	Number of candidates
1 (1)	Health and Social Care	47.14	2011
2 (2)	Business	25.90	1105
3 (3)	Science	10.29	439
4 (4)	ICT	8.35	356
5 (5)	Art and Design	6.40	273
6 (6)	Travel and Tourism	1.92	82
7 (7)	Leisure	0.00	0

(2013 ranking in brackets)

**Table 8 All Applied GCE A-level single award subjects, 2014**

Ranking	Subject	% of total	Number of candidates
1 (3)	Business	25.86	7512
2 (1)	ICT	25.42	7384
3 (2)	Health and Social Care	22.46	6526
4 (4)	Science	11.21	3258
5 (5)	Travel and Tourism	6.29	1828
6 (6)	Performing Arts	3.94	1145
7 (7)	Leisure	1.74	506
8 (9)	Media	1.14	331
9 (8)	Art and Design	1.00	290
10 (10)	Engineering	0.94	273

(2013 ranking in brackets)

**Table 9 All Applied GCE AS double award subjects, 2014**

Ranking	Subject	% of total	Number of candidates
1 (1)	Health and Social Care	45.39	2266
2 (2)	Business	25.36	1266
3 (3)	Science	13.34	666
4 (4)	ICT	8.89	444
5 (5)	Art and Design	5.05	252
6 (6)	Travel and Tourism	1.96	98
7 (7)	Leisure	0.00	0

(2013 ranking in brackets)

**Table 10 All Applied GCE AS single award subjects, 2014**

Ranking	Subject	% of total	Number of candidates
1 (2)	Business	26.1	11561
2 (1)	ICT	24.2	10720
3 (3)	Health and Social Care	22.2	9839
4 (4)	Science	13.4	5958
5 (5)	Travel and Tourism	6.7	2966
6 (6)	Performing Arts	3.1	1374
7 (7)	Leisure	1.5	655
8 (8)	Engineering	1.1	510
9 (9)	Media	1.1	490
10 (10)	Art and Design	0.6	285

(2013 ranking in brackets)

As in 2012 the overall entries for the Applied GCE single and double Award A-level subjects all show a decrease from 2013.

## Level 3 Extended Project trend

Table 11 Changes from 2012-2014

Subject	% change	2013 Number of candidates	2014 Number of candidates
Extended Project	9.4	30401	33245

## AEA trend

Table 12 Changes from 2012-2014

Subject	% change	2013 Number of candidates	2014 Number of candidates
AEA Mathematics	18.6	806	899

Note: It is intended that the AEA in Mathematics will continue until a new A-level specification in Mathematics is introduced.