

TABLES – GCSE, Project and Entry Level Trends, 2014

GCSE full course trends

Chart 1 Total entry for GCSE full course subjects

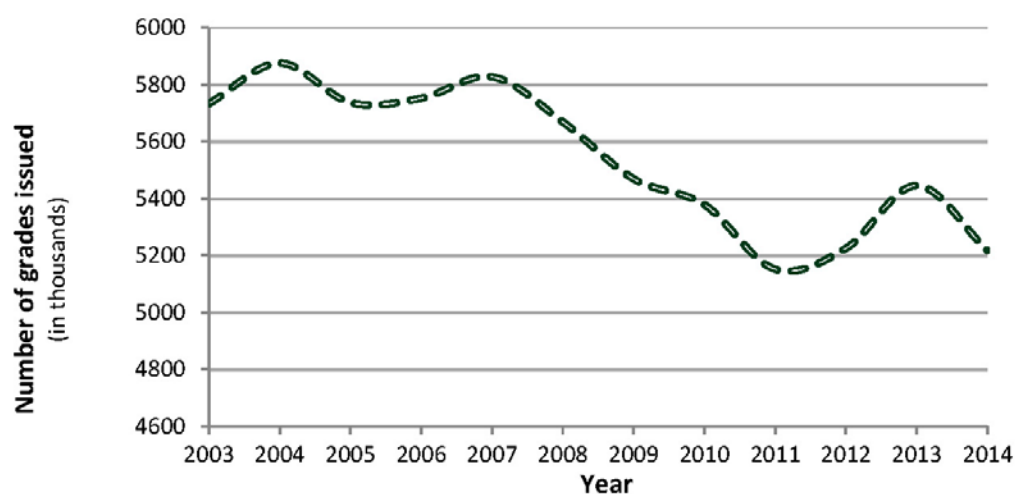


Chart 2 Cohort size

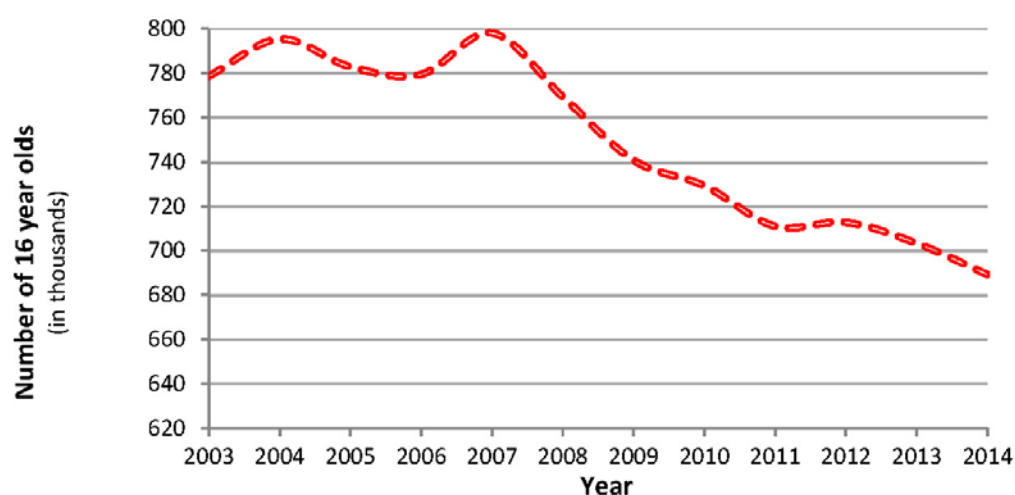


Table A Top ten GCSE full course subjects in 2014

Ranking		Subject	% of total	Number of candidates
1	(1)	Mathematics	14.11	736403
2	(2)	English	9.88	515575
3	(3)	English Literature	9.17	478575
4	(4)	Science	7.19	374961
5	(5)	Additional Science	6.21	323944
6	(6)	Religious Studies	5.41	282099
7	(7)	History	4.91	256179
8	(8)	Geography	4.32	225149
9	(9)	Design & Technology	4.09	213629
10	(10)	Art and Design subjects	3.67	191398

(2013 ranking in brackets.)

Chart 3 Top ten GCSE full course subjects as a percentage of the total entry over the period 2003 to 2014

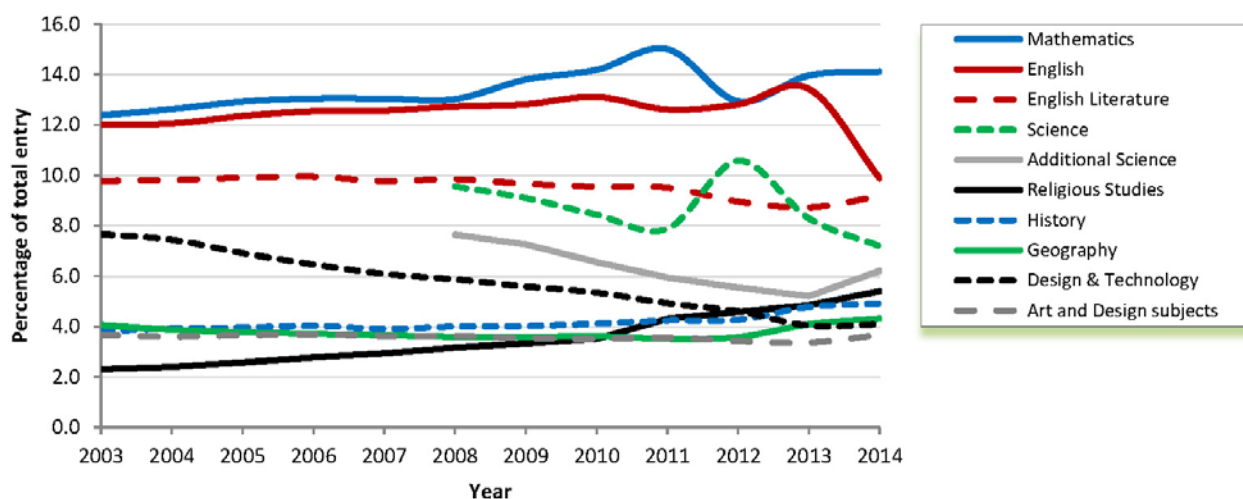


Table B Top GCSE full course subject increases (entry greater than 100,000)
(Changes from 2013-2014)

Ranking	Subject	% change	2013 Number of candidates	2014 Number of candidates
1	Additional Science	14.31	283391	323944
2 (9)	Physical Education	7.70	104895	112971
3 (5)	Religious Studies	6.86	263988	282099
4 (10)	Art and Design subjects	4.54	183090	191398
5 (1)	Geography	1.03	222852	225149
6 (33)	English Literature	0.75	475031	478575

(2013 ranking in brackets. Subjects having a year-on-year decrease in 2013 are shown as blank.)

Chart 4 Top GCSE full course subject increases, 2014 (entry greater than 100,000)

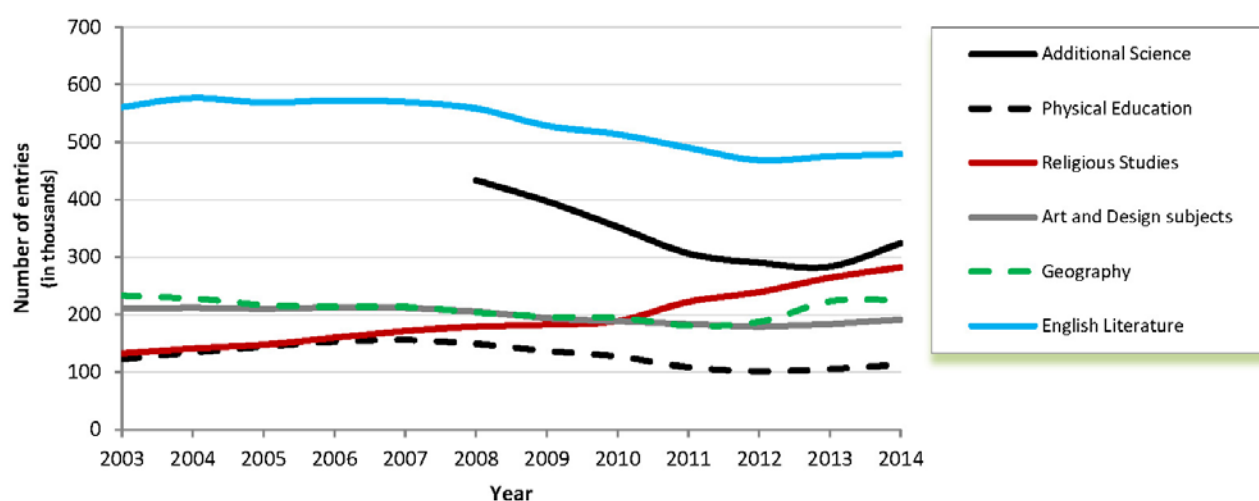


Table C Top GCSE full course subject increases (entry less than 100,000)
(Changes from 2013-2014)

Ranking	Subject	% change	2013 Number of candidates	2014 Number of candidates
1	Computing	294.38	4253	16773
2	Leisure & Tourism	108.70	3481	7265
3 (2)	Engineering	73.52	2897	5027
4 (21)	Citizenship Studies	68.35	11695	19689
5 (3)	Health & Social Care	46.01	11016	16085
6	Statistics	40.51	43870	61642
7 (4)	ICT	39.83	69234	96811
8 (5)	Manufacturing	30.51	236	308
9 (1)	Hospitality	28.37	2996	3846
10 (19)	All Other subjects	25.26	31203	39086

(2013 ranking in brackets. Subjects having a year-on-year decrease in 2013 are shown as blank.)
(Note ICT and computing were combined in the subject groups in 2013.)

Chart 5 Top GCSE full course subject increases, 2014 (entry less than 100,000)

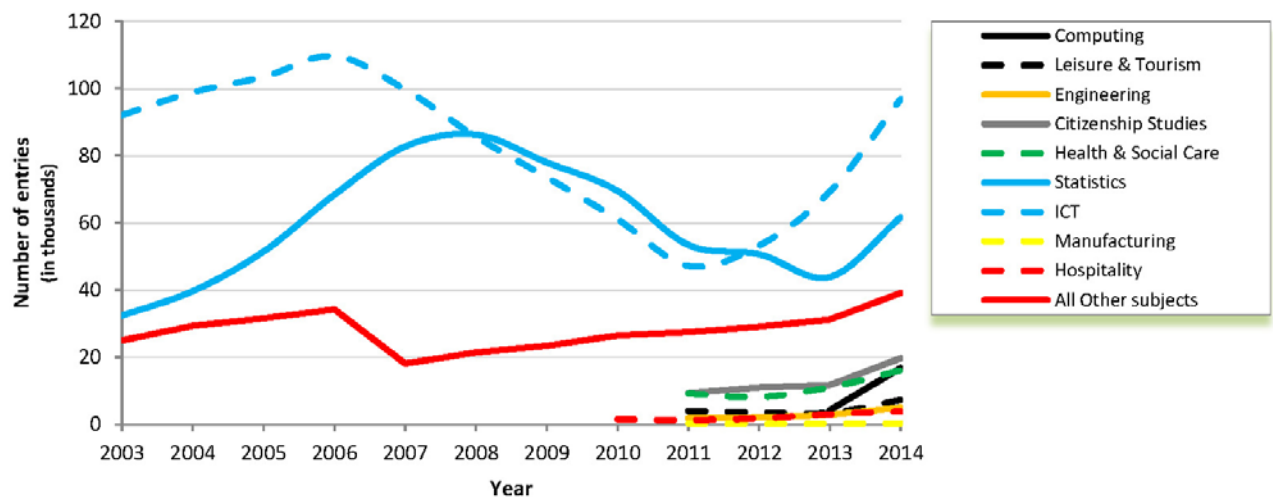


Table D GCSE full course subject decreases (entry greater than 100,000)
(Changes from 2013-2014)

Ranking	Subject	% change	2013 Number of candidates	2014 Number of candidates
1	English	-29.48	731153	515575
2	Biology	-18.65	174428	141900
3 (1)	Science	-16.94	451433	374961
4	Chemistry	-16.77	166091	138238
5	Physics	-14.63	160735	137227
6	French	-5.22	177288	168042
7	Mathematics	-3.13	760170	736403
8 (2)	Design & Technology	-2.87	219931	213629
9	History	-1.56	260236	256179

(2013 ranking in brackets. Subjects having a year-on-year increase in 2013 are shown as blank.)

Chart 6 Top GCSE full course subject decreases, 2014 (entry more than 100,000)

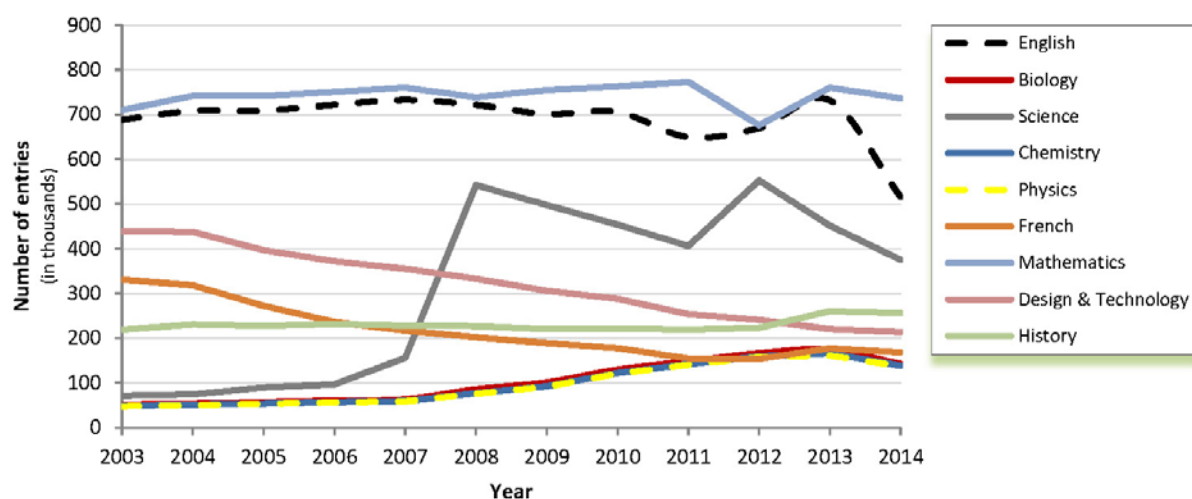


Table E GCSE full course subject decreases (entry less than 100,000)
(Changes from 2013-2014)

Ranking	Subject	% change	2013 Number of candidates	2014 Number of candidates
1	Other Technology	-24.71	1485	1118
2	Construction	-22.78	755	583
3	Welsh Literature	-10.09	4163	3743
4	German	-4.83	62932	59891
5	Irish	-2.69	2080	2024
6	Welsh: First Language	-0.80	5636	5591
7 (2)	Humanities	-0.78	9783	9707

(2013 ranking in brackets. Subjects having a year-on-year increase in 2013 are shown as blank.)

GCSE short course trends

Table F Top GCSE short course subjects in 2014

Ranking	Subject	% of total	Number of candidates
1 (1)	Religious Studies	64.95	123393
2 (2)	Citizenship Studies	10.88	20676
3 (3)	Welsh: Second Language	7.72	14669
4 (4)	Physical Education	4.82	9164
5 (5)	ICT	4.32	8215

(2013 ranking in brackets.)

Chart 7 Top ten GCSE short course subjects as a percentage of the total entry over the period 2003 to 2014

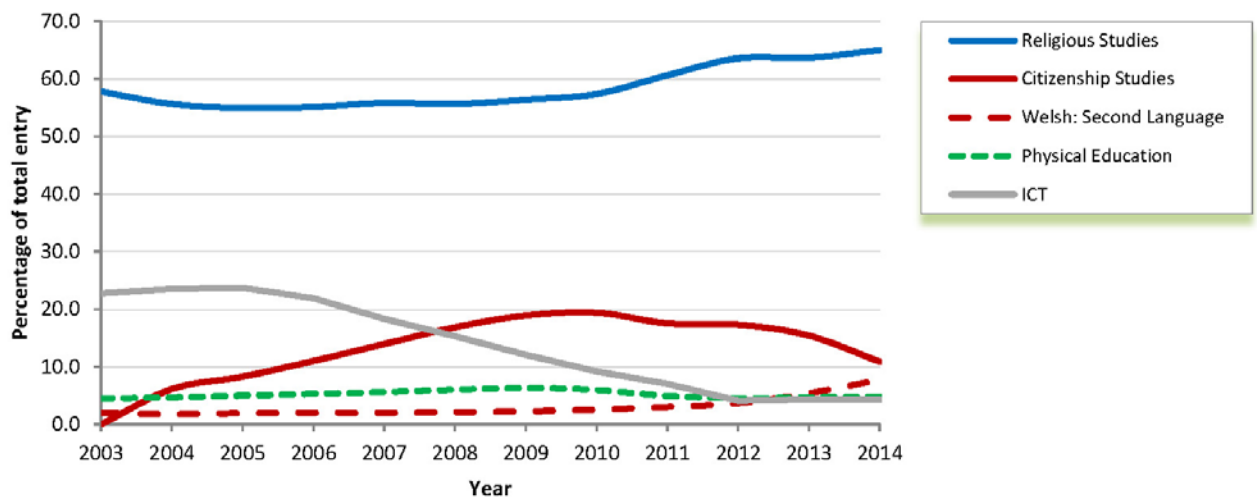
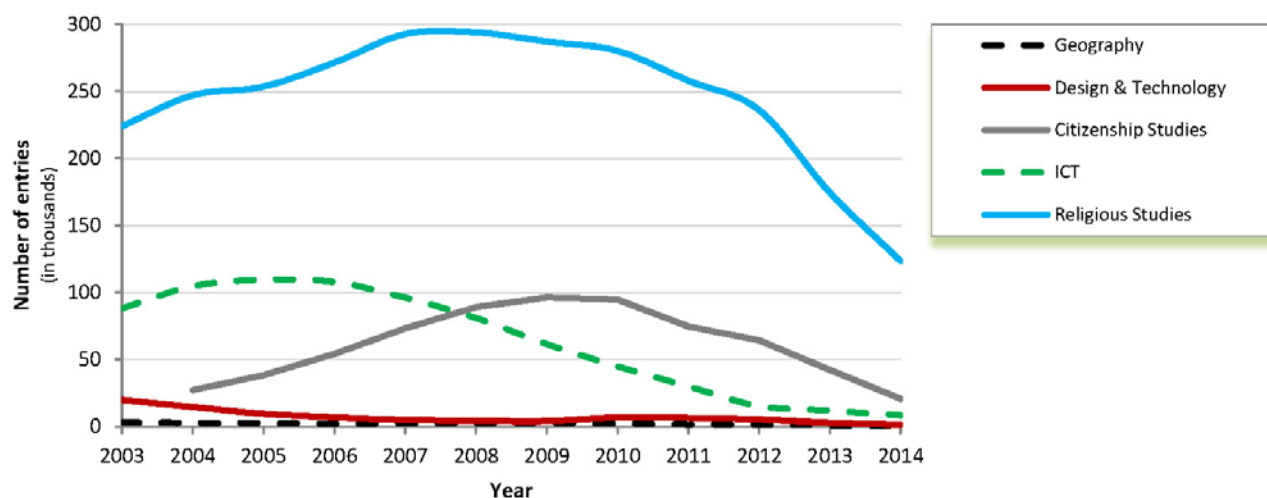


Table G Top GCSE short course subject decreases (Changes from 2013-2014)

Ranking		Subject	% change	2013 Number of candidates	2014 Number of candidates
1	(3)	Geography	-72.34	817	226
2	(1)	Design & Technology	-52.11	2750	1317
3	(3)	Citizenship Studies	-51.01	42203	20676
4	(14)	ICT	-31.01	11908	8215
5	(10)	Religious Studies	-29.23	174364	123393

(2013 ranking in brackets. Subjects having a year-on-year increase in 2013 are shown as blank. Subjects under 100 candidates omitted.)

Chart 8 Top GCSE short course subject decreases, 2014



GCSE double award trends

Table H Top GCSE double award subjects in 2014

Ranking	Subject	% of total	Number of candidates
1 (1)	Science: Double Award	33.60	7361
2 (2)	Health & Social Care	16.67	3653
3 (3)	Business	11.04	2418
4 (6)	Engineering	8.60	1884
5 (5)	ICT	8.42	1844

(2013 ranking in brackets.)

Chart 9 Top GCSE double award subjects as a percentage of the total entry over the period 2003 to 2014

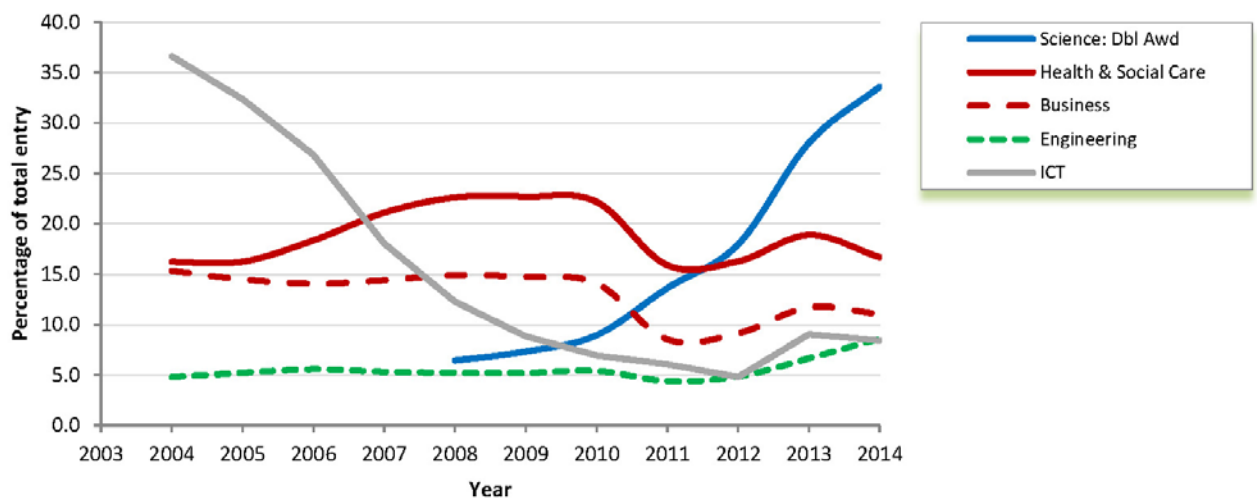


Table I Top GCSE double award subject increases (Changes from 2013-2014)

Ranking	Subject	% change	2013 Number of candidates	2014 Number of candidates
1	Engineering	6.98	1761	1884

(2013 ranking in brackets. Subjects having a year-on-year decrease in 2013 are shown as blank.)

Chart 10 Top GCSE double award subject increases, 2014 (only Engineering increased)

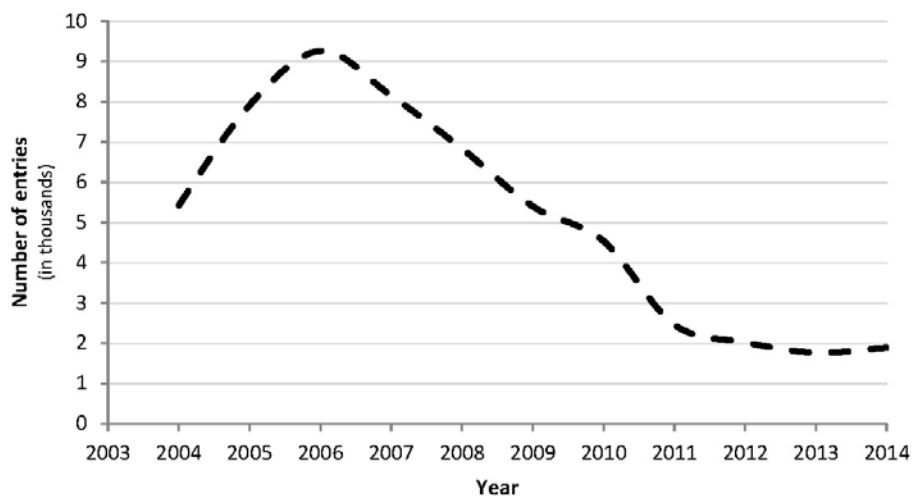
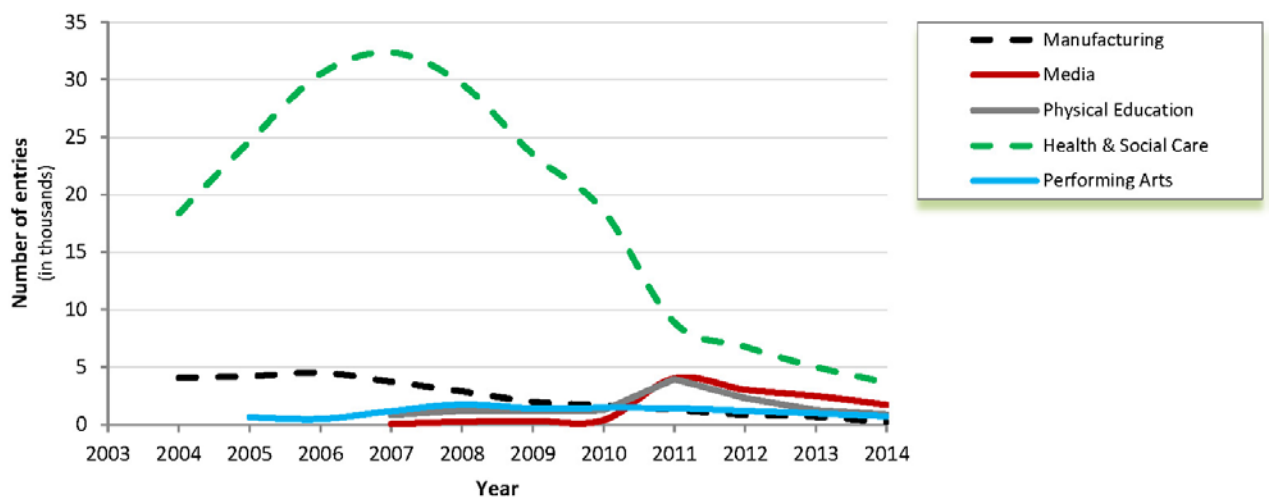


Table J Top GCSE double award subject decreases (Changes from 2013-2014)

Ranking	Subject	% change	2013 Number of candidates	2014 Number of candidates
1 (6)	Manufacturing	-68.24	677	215
2 (4)	Media	-30.34	2482	1729
3 (1)	Physical Education	-29.93	1263	885
4 (2)	Health & Social Care	-26.94	5000	3653
5 (7)	Performing Arts	-26.32	969	714

(2013 ranking in brackets.)

Chart 11 Top GCSE double award subject decreases, 2014 (All subjects)



Entry Level trends

Table K Top Entry Level subjects in 2014

Ranking	Subject	% of total	Number of candidates
1 (1)	Mathematics	18.33	11052
2 (2)	English	15.08	9090
3 (4)	Science	14.51	8748
4 (3)	Physical Education	8.90	5367
5 (10)	ICT	8.32	5015

(2013 ranking in brackets.)

Chart 12 Top Entry Level subjects as a percentage of the total entry over the period 2003 to 2014

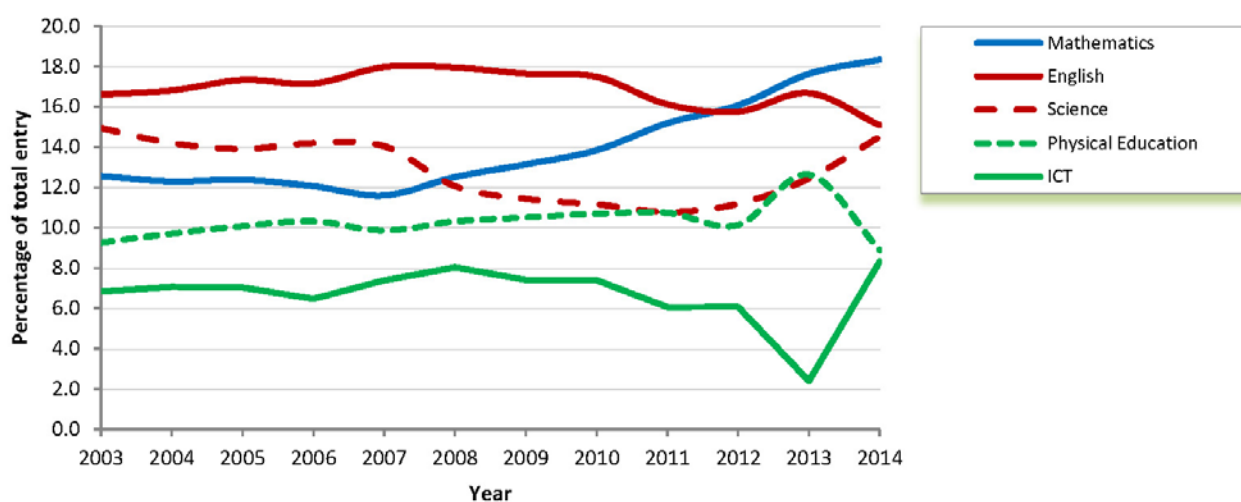


Table L Entry Level subject increases (Changes from 2013-2014)

Ranking	Subject	% change	2013 Number of candidates	2014 Number of candidates
1	ICT	247.54	1443	5015
2	Other Modern Languages	117.27	139	302
3	Business Studies	25.13	382	478
4	Science	16.76	7492	8748
5 (1)	Preparation for Life and Work	7.72	790	851

(2013 ranking in brackets. Subjects having a year-on-year decrease in 2013 are shown as blank.)

Chart 13 Top Entry Level subject increases, 2014

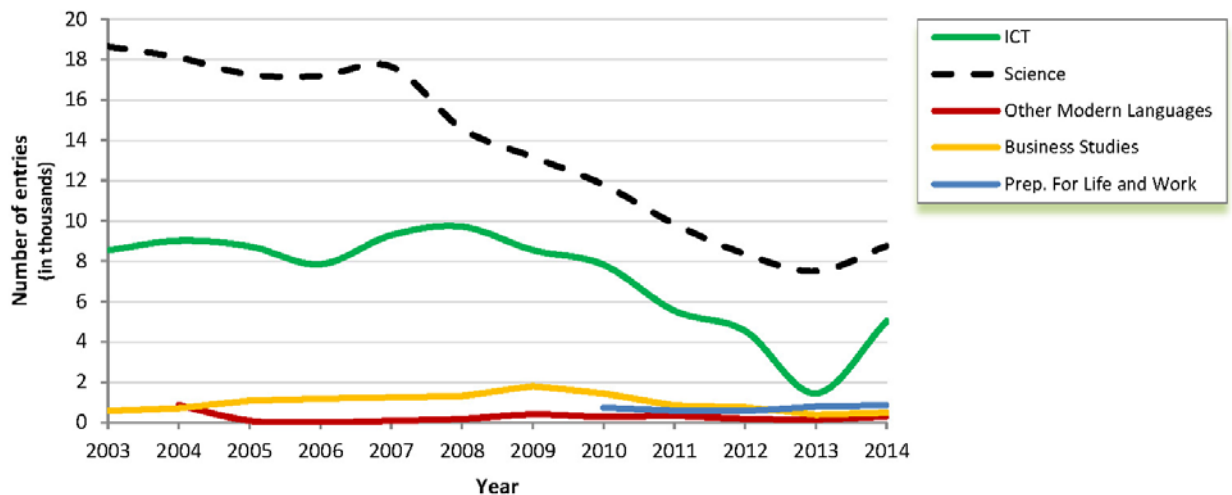
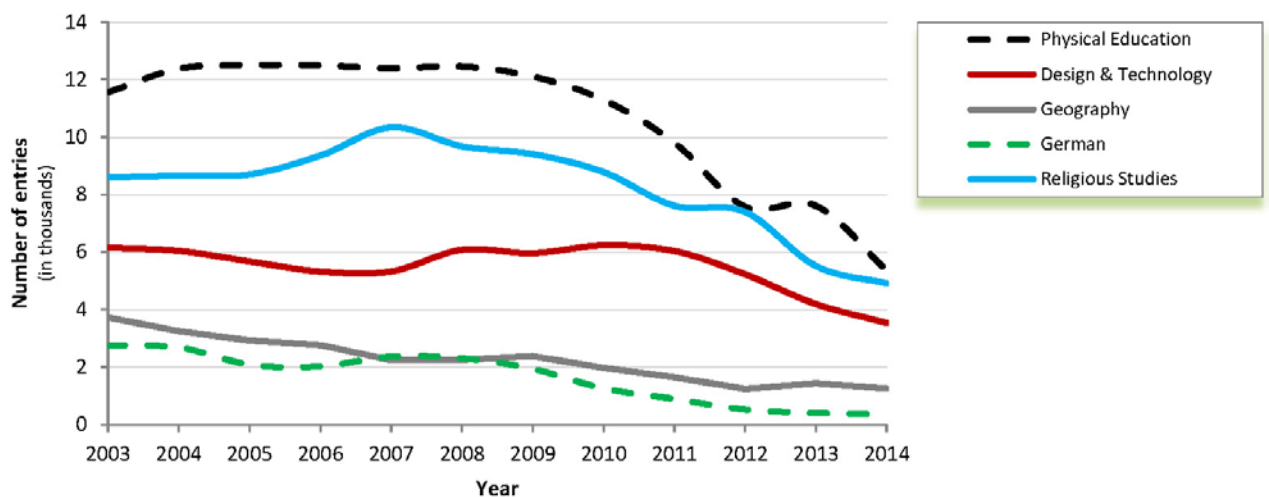


Table M Top Entry Level subject decreases (Changes from 2013-2014)

Ranking	Subject	% change	2013 Number of candidates	2014 Number of candidates
1	Physical Education	-29.45	7607	5367
2 (4)	Design & Technology	-15.66	4190	3534
3	Geography	-12.16	1431	1257
4 (7)	German	-11.81	398	351
5 (3)	Religious Studies	-10.99	5515	4909

(2013 ranking in brackets. Subjects having a year-on-year increase in 2013 are shown as blank.)

Chart 14 Top Entry Level subject decreases, 2014



Project Trends

Table N Changes from 2013-2014

Subject	% change	2013 Number of candidates	2014 Number of candidates
Level 1 Project	-22.04	2705	2382
Level 2 Project	-11.9	12584	9810