

GCE A-level trends – Summer 2020

Table 1 Top GCE A-level subjects in 2020 by entry

Ranking		Subject	% of total	Number of entries
1	(1)	Mathematics	12.1	94,264
2	(3)	Psychology	8.4	65,263
3	(2)	Biology	8.3	65,120
4	(4)	Chemistry	7.2	56,100
5	(5)	History	5.7	44,898
6	(6)	Art and Design Subjects	5.4	41,846
7	(7)	English Literature	5.3	41,380
8	(9)	Sociology	5.0	38,994
9	(8)	Physics	4.9	37,921
10	(11)	Business Studies	4.6	36,188

(2019 ranking in brackets)

Figure 1 Top ten GCE A-level subjects as a percentage of the total entry over the period 2010 to 2020

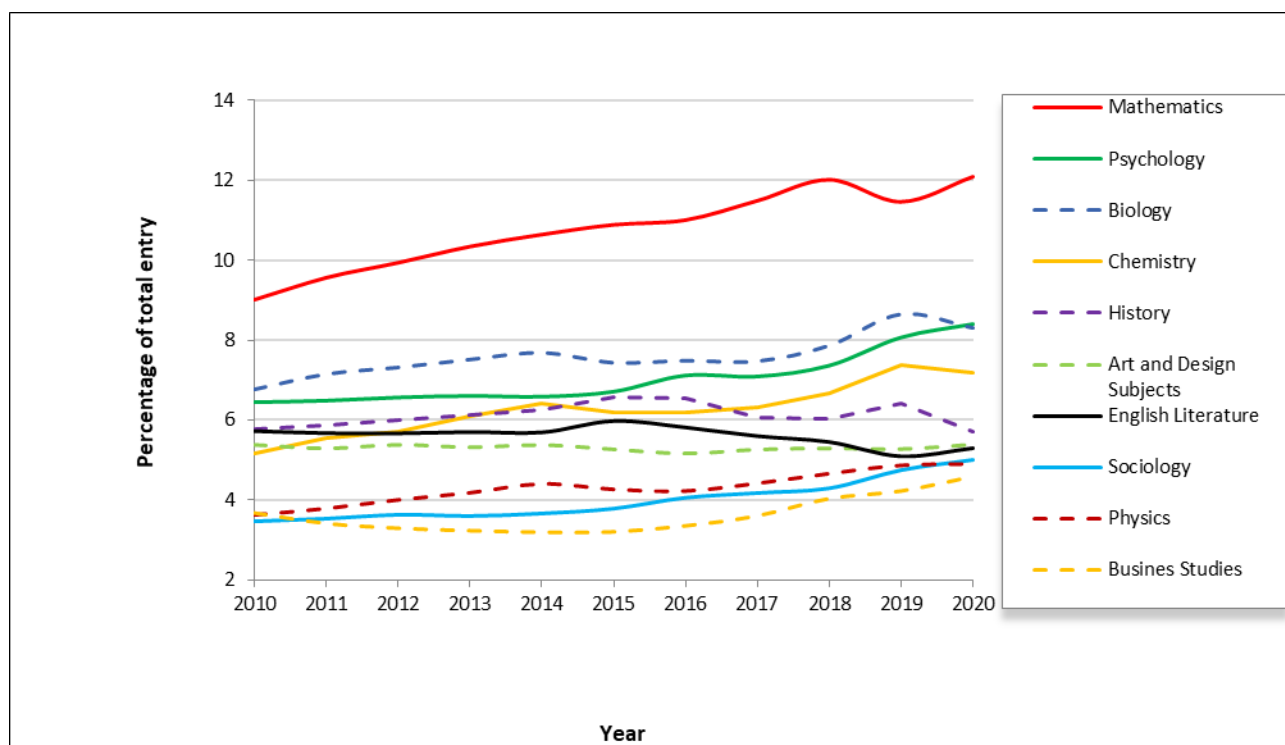


Table 2 Top GCE A-level subject increases (changes from 2019-2020)

Ranking	Subject	% change	2019 Number of entries	2020 Number of entries
1 (6)	Computing	11.7	11,124	12,428
2 (10)	Business Studies	6.6	33,925	36,188
3 (3)	English Language	6.6	14,114	15,053
4	Physical Education	3.2	11,097	11,454
5	Mathematics (Further)	3.1	14,527	14,979
6	Mathematics	2.6	91,895	94,264
7	Sociology	2.6	38,015	38,994
8 (13)	Economics	1.8	30,841	31,391
9	English Literature	1.4	40,824	41,380
10 (12)	Law	1.2	11,575	11,711

(2019 ranking in brackets. Subjects over 5000 entries shown. Subjects having a year-on-year decrease in 2019 are shown as blank.)

Figure 2 Top GCE A-level subject increases, 2020

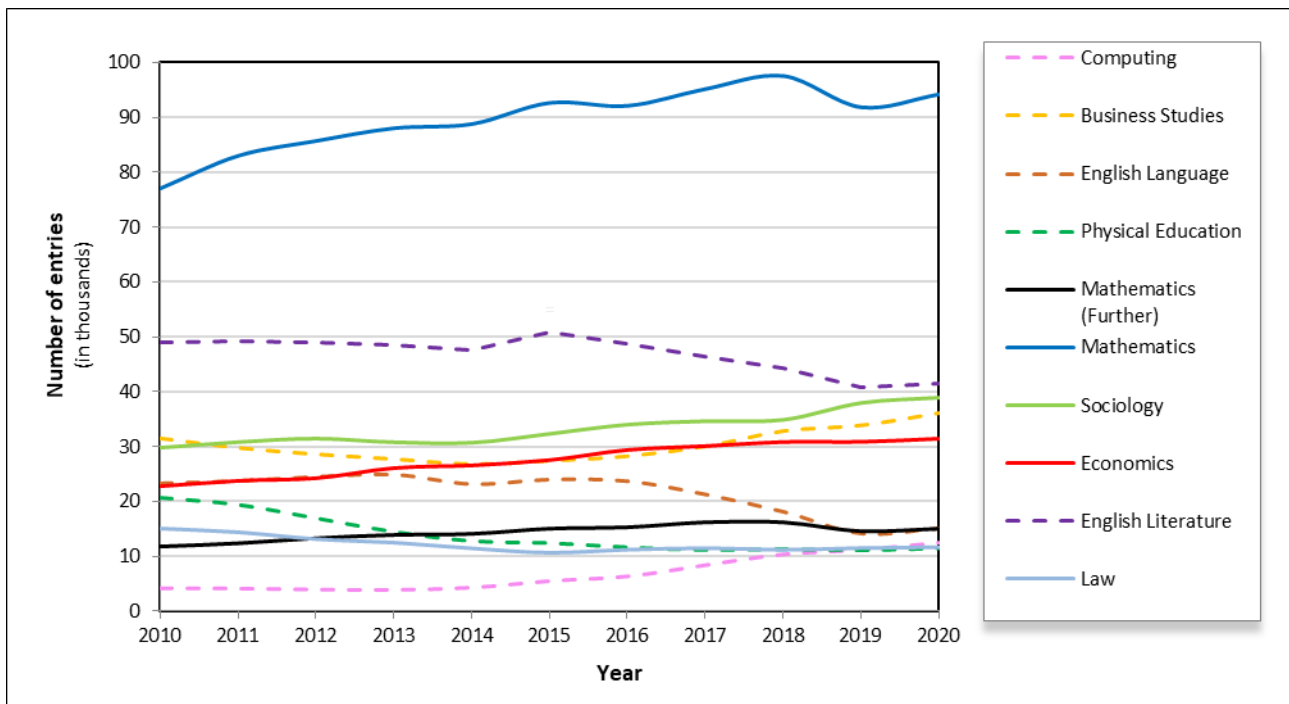


Table 3 GCE A-level subject decreases (changes from 2019-2020)

Ranking	Subject	% change	2019 Number of entries	2020 Number of entries
1 (6)	Other Modern Languages	-40.5	8,289	4,928
2 (2)	ICT	-15.2	1,572	1,333
3	Geography	-13.6	34,960	30,203
4	Other Sciences	-13.1	2,527	2,196
5	History	-12.7	51,438	44,898
6	Political Studies	-10.5	19,729	17,659
7	Religious Studies	-9.6	19,406	17,539
8 (2)	All Other Subjects	-8.7	6,712	6,131
9 (10)	Classical Subjects	-7.2	5,148	4,777
10 (20)	German	-6.1	3,033	2,849

(2019 ranking in brackets. Subjects over 1000 entries shown. Subjects having a year-on-year increase in 2019 are shown as blank.)

Figure 3 Top GCE A-level subject decreases, 2020

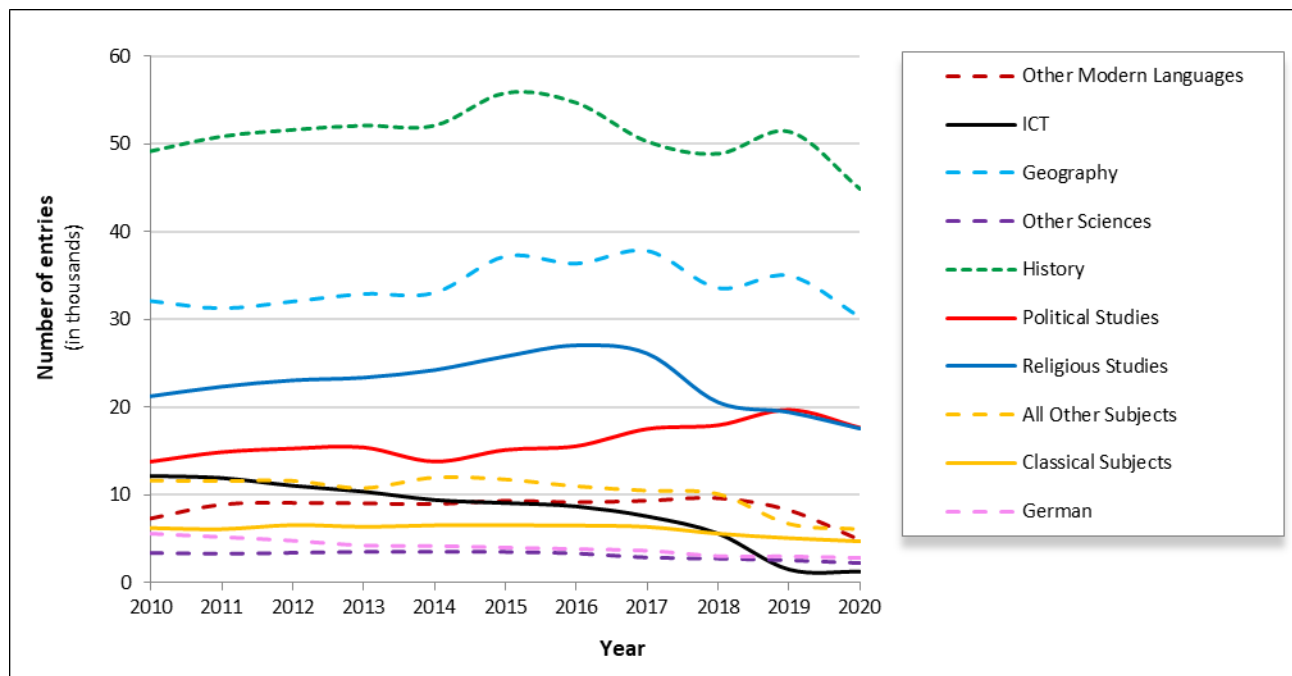


Figure 4 GCE A-level sciences, 2010-2020

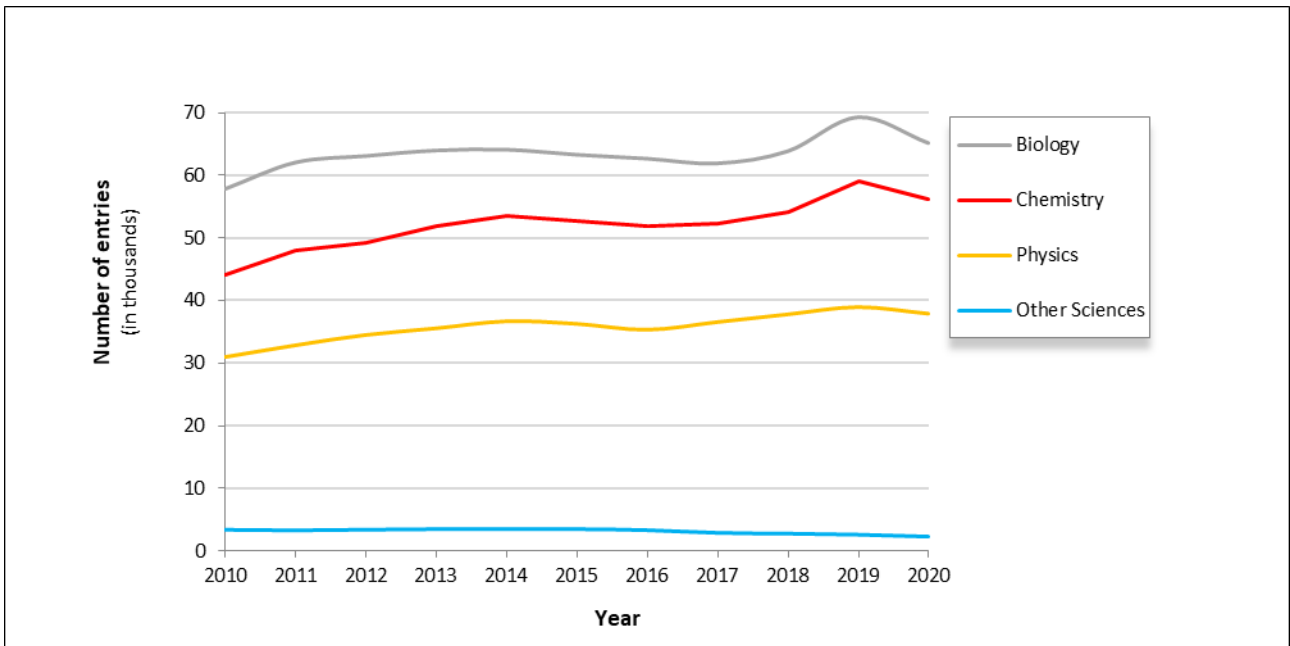
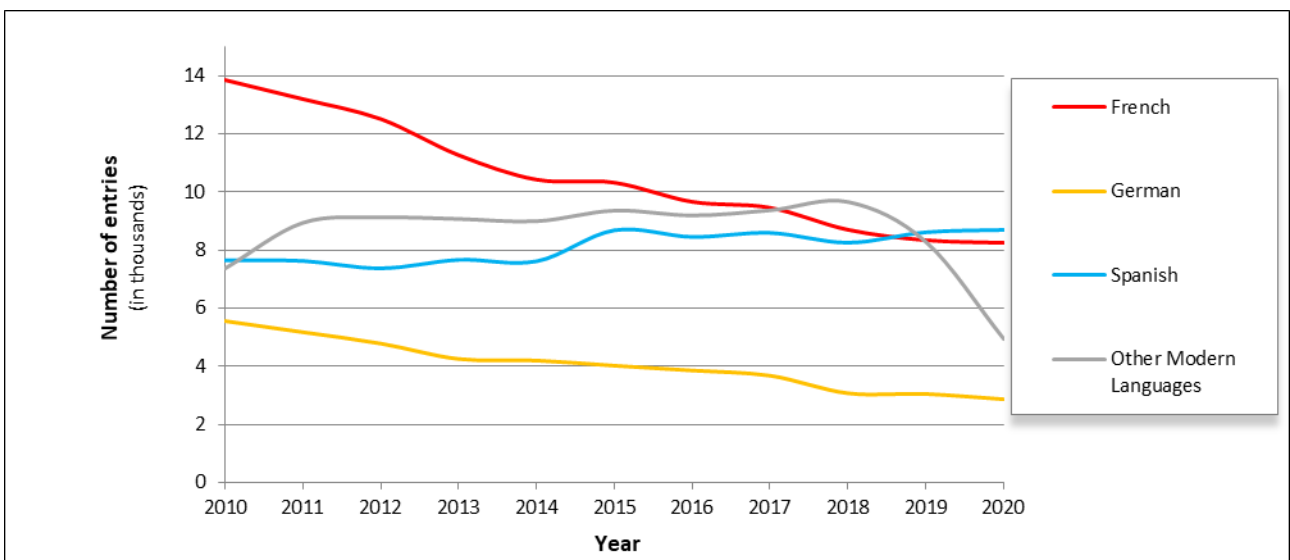


Figure 5 GCE A-level languages, 2010-2020



GCE AS-level trends

Table 4 Top GCE AS-level subjects in 2020

Ranking	Subject	% of total	Number of entries
1 (1)	Mathematics	11.9	18,363
2 (2)	Biology	9.2	14,126
3 (3)	Chemistry	7.5	11,514
4 (4)	Psychology	7.1	10,909
5 (5)	Physics	5.5	8,428
6 (6)	History	5.3	8,120
7 (7)	Sociology	5.2	7,990
8 (8)	Business Studies	5.1	7,820
9 (9)	English Literature	4.3	6,667
10 (10)	Art and Design Subjects	4.0	6,165

(2019 ranking in brackets)

Figure 6 Top ten AS-level subjects as a percentage of the total entry over the period 2010 to 2020

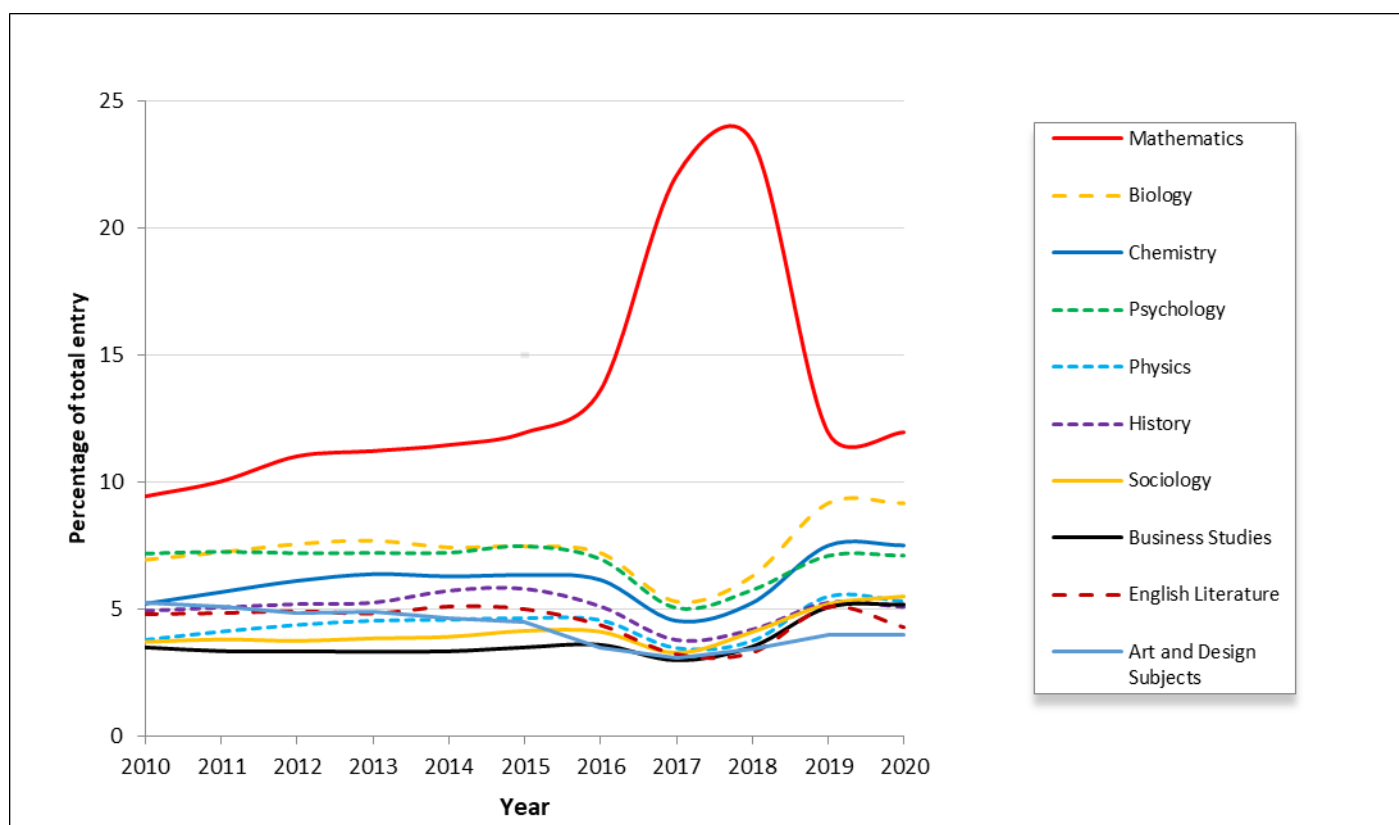


Table 5 GCE AS-level subject decreases (changes from 2019-2020)

Ranking	Subject	% change	2019 Number of entries	2020 Number of entries
1 (11)	English Language	-34.0	2789	1842
2 (1)	Mathematics	-29.2	25923	18363
3 (20)	Economics	-28.1	5266	3784
4 (31)	Computing	-25.7	3098	2303
5 (29)	French	-24.3	2229	1687
6 (8)	Media / Film / TV Studies	-23.7	5160	3938
7 (15)	Art and Design Subjects	-23.5	8064	6165
8 (18)	Psychology	-21.6	13908	10909
9 (30)	Business Studies	-20.8	9876	7820
10 (32)	Spanish	-20.7	2200	1745

(2019 ranking in brackets. Subjects over 1000 entries shown. Subjects having a year-on-year increase in 2019 are shown as blank.)

Figure 7 GCE AS-level subject decreases, 2020

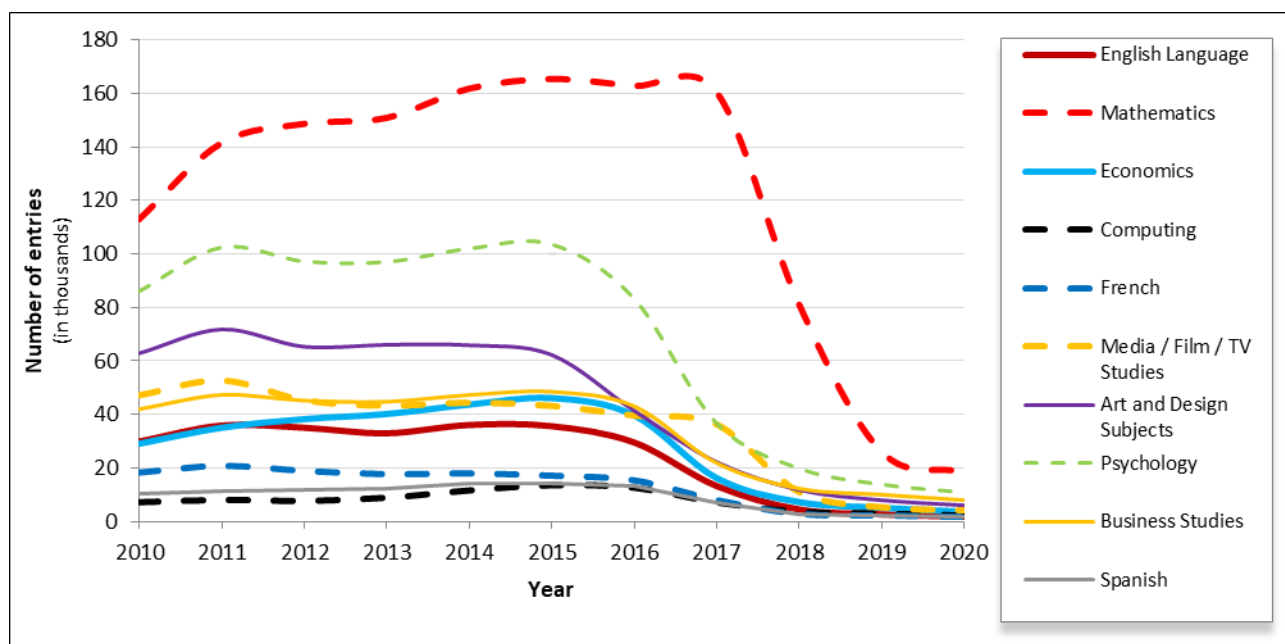


Figure 8 GCE AS-level sciences, 2010-2020

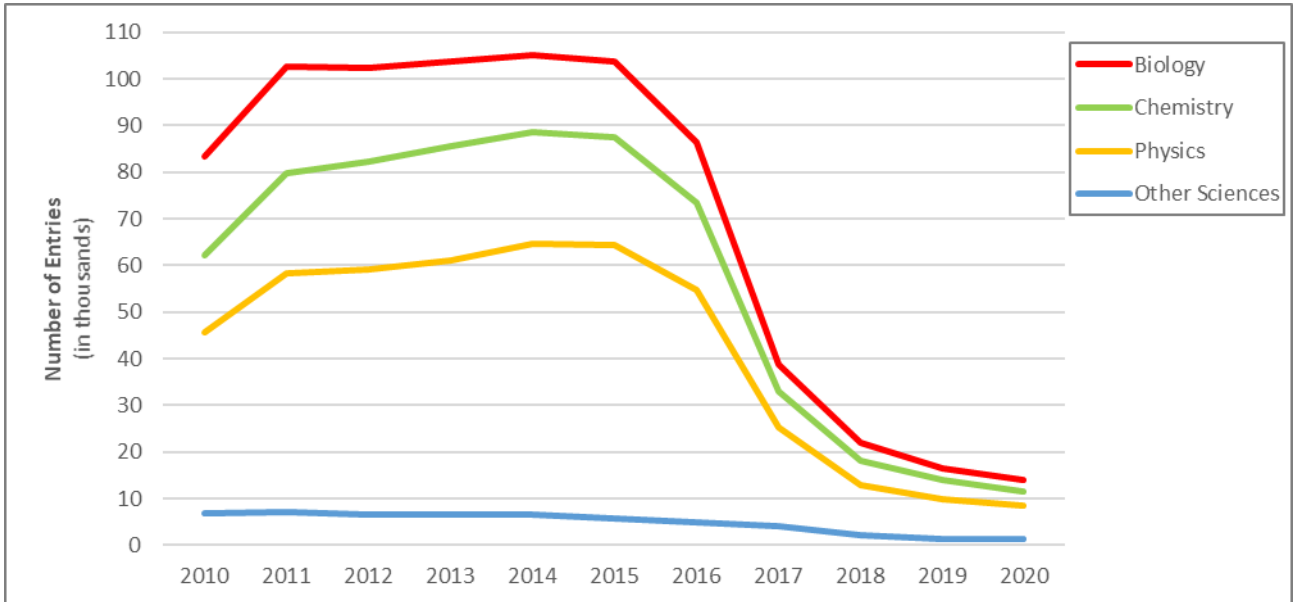
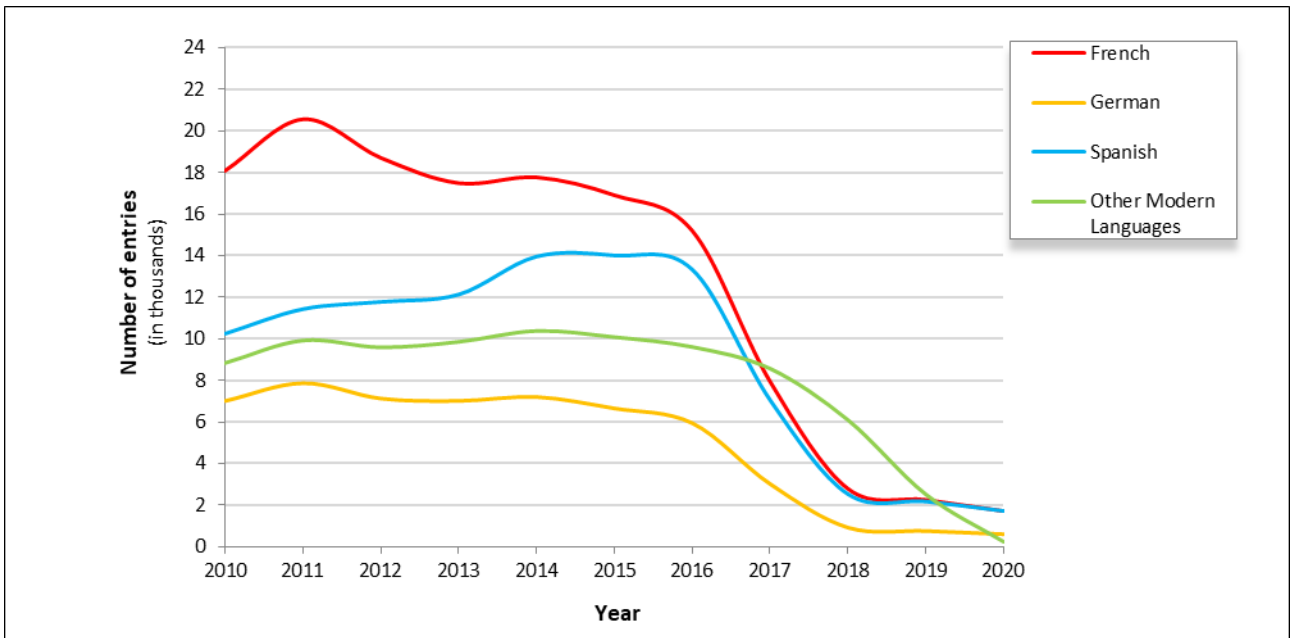


Figure 9 GCE AS-level languages, 2010-2020



Level 3 Extended Project trend

Table 6 Changes from 2019-2020

Subject	% change	2019 Number of entries	2020 Number of entries
Extended Project	-7.2	38,852	36,056

AEA trend

Table 7 Changes from 2019-2020

Subject	% change	2019 Number of entries	2020 Number of entries
AEA Mathematics	-33.7	326	216